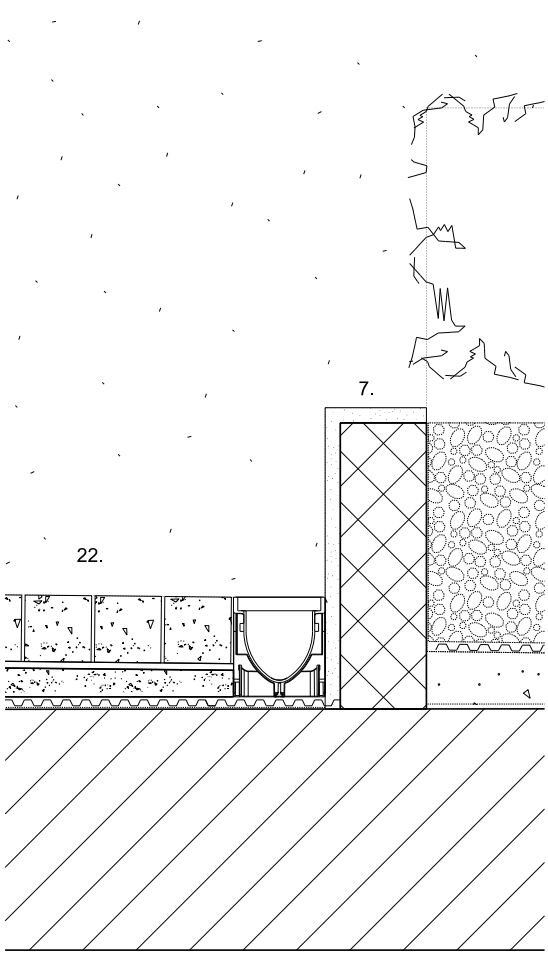
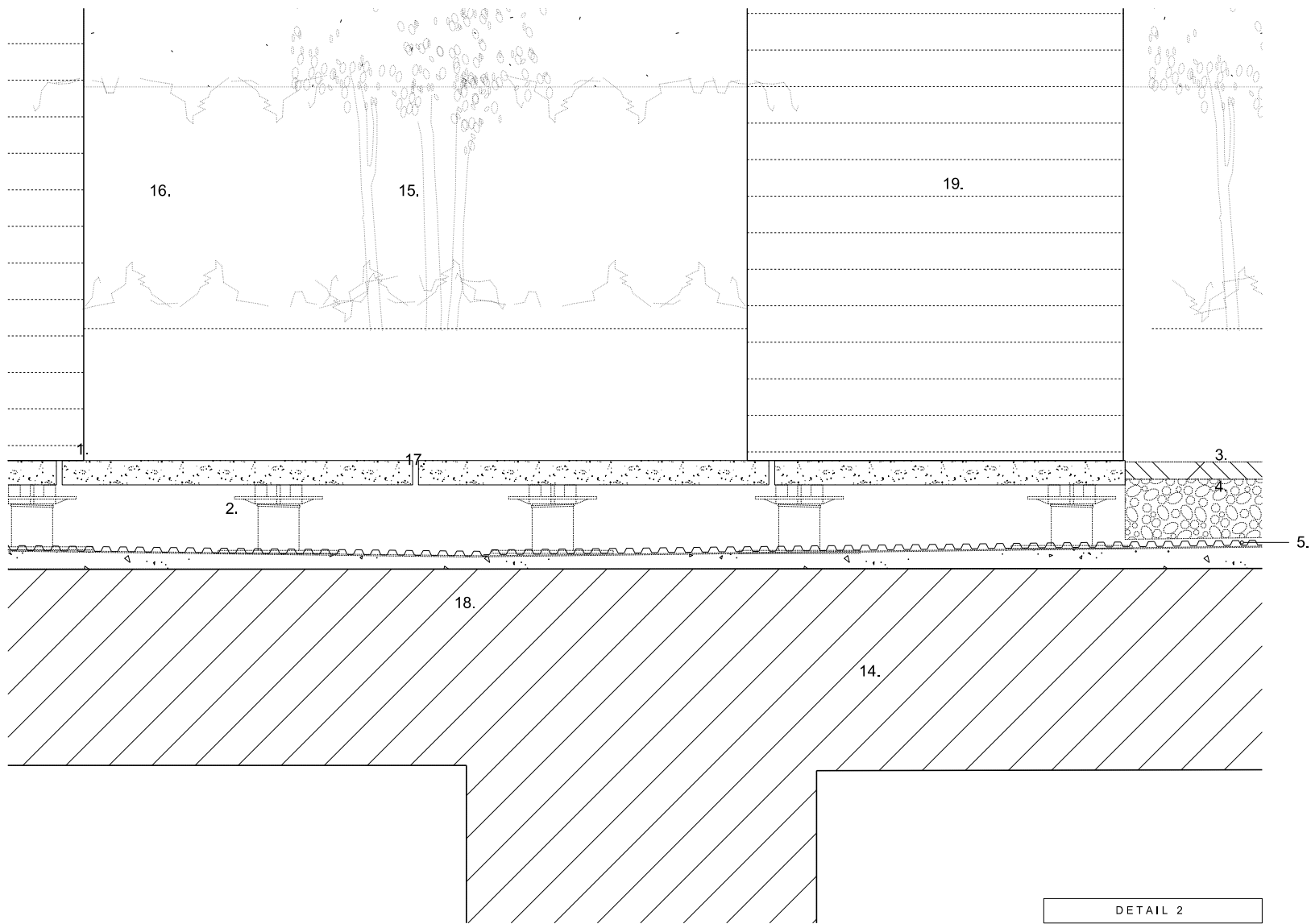


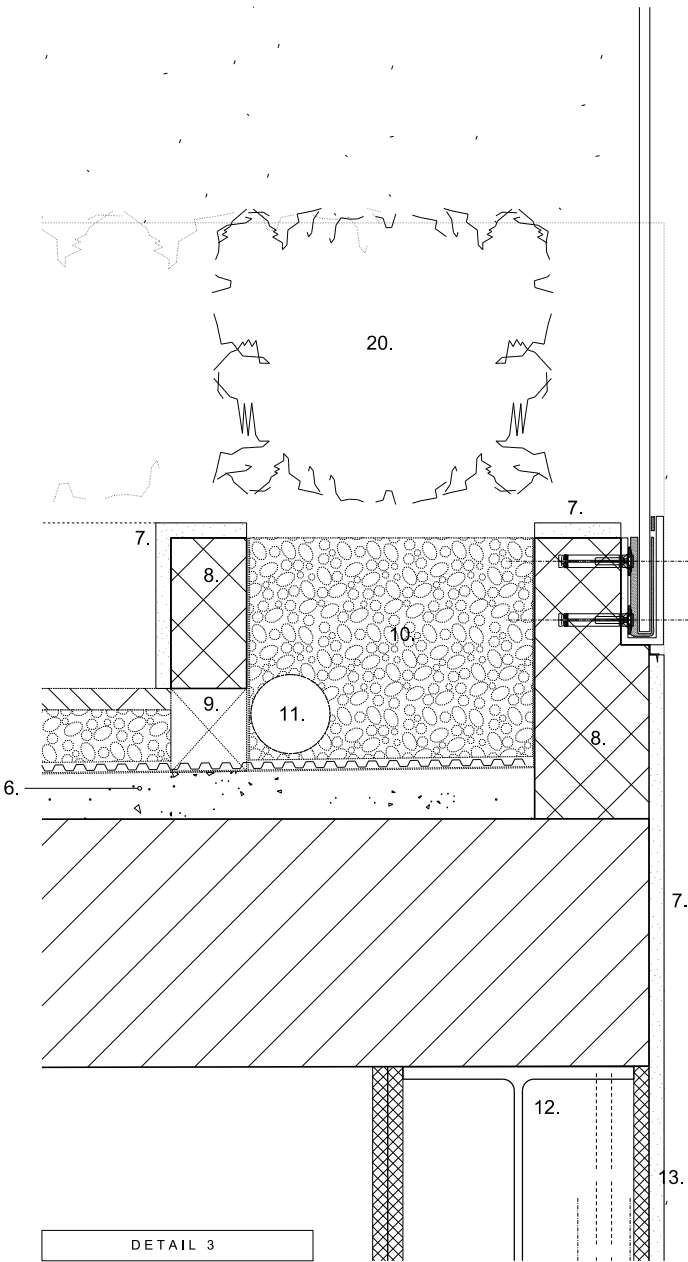
- 40mm thick Scoutmoor Yorkstone tiles
(removable for access to drain)
- Alumasc Harmer 'uni-ring' adjustable cruciform feet -
allow 16mm spacing between tiles
- Roof green Jumbo plug plants : 20 - 30mm
- Roof green substrate extensive : 80mm
- 11mm drainage layer
- Roofing membrane
- 20mm min. concrete screed laid to falls on existing concrete slab
- 20mm Sika Render to blockwork planter
- 200mm blockwork planter wall
- 100mm x 200mm aperture at intermediate locations to permit
drainage to planter
- As per note 4. with fabriscape silt control filter fabric lining planter
- Perforated field drain system to base of planter
- Galvanised connection plate for grills painted black
- 12mm x 80mm galvanised mild steel plate forming grill painted black.
- Existing concrete slab
- DELETED
- Overflow perimeter drain to concealed outlet below : 500h x 800w x 800d.
- Overflow outlet above drain
- WADE - Drainage Outlet - 3400 Series specification code
WC223 Horizontal Threaded outlet with attached Leaf Guard
- Folded aluminium polyester powder coated planter box
with silt control filter fabric liner : 1400h x 450w x 450d
- Specified box hedging
- Carpinus Betulus pleached hornbeam trees : 1.5m hieght
- 100 x 100 x 100 granite sets laid to falls
- Specfied box hedging



DETAIL 1



DETAIL 2



DETAIL 3

26.01.12 Rev A Issued for Construction
23.01.12 Rev A Issued for Setout

Construction Issue

11025

Project No.

Client
GFZ Developments Ltd.

Date
January 2012

Scale
1:25 @ A2

Project
31-32 John Street

Drawing Title:
External Landscaping Details

Drawing No.
800_016

Rev.
A

Drawn
TB

Approved
BC

Signed

Copyright Cousins Wojciechowski Architects.
No implied license exists. This drawing should not
be used to calculate areas for the purposes of
valuation. All dimensions to be checked on site by
the contractor and such dimensions to be their
responsibility.
Do not scale drawings
All work must comply with relevant British
Standards and Building Regulations requirements.
Drawing errors and omissions to be reported to
the architect.

Cousins Wojciechowski
Architects
28 Margaret Street
London W1W 6RZ
T. 020 7580 9333
F. 020 7580 9334
info@cw-a.co.uk
www.cw-a.co.uk