

**General notes:**  
 This drawing is copyright of KSR architects. The drawings must be read in conjunction with specifications and all other relevant documentation and drawings.  
 KSR Architects accept no liability for any expense, loss or damage of whatsoever nature and however arising from any variation made to this drawing or in the execution of the work to which it relates which has not been referred to them and their approval obtained.  
 Check all dimensions on site prior to carrying out any works.

**Notes/Legends**

- Revision P3  
Lifetime Homes**
- STANDARD 4**  
 Level access achieved  
 House accessed by 1:17 ramp @ 1.35m length for 80mm level difference.  
 Elevation drawing mistake is corrected (NUT-111).
- STANDARD 10**  
 Entry level WC layout revised and shown with dimensions. It is fully compliant.
- STANDARD 12**  
 Potential lift location & related arrangement shown as Blue dash lines.  
 -Stair lift can be installed as stairs clear width (1.0m) is wider than required min. width 900mm  
 -Floor lift can be installed as shown without structural alteration. Knock out concrete panel to be provided.
- STANDARD 14**  
 First floor main bathroom layout revised and demonstrates that it is fully accessible for wheelchair users.

P3 Revised to comply with Lifetime Homes Standard 08.09.12 SHY RS  
 P1 Planning Application Submission 08.05.12 SHY RS

© KSR architects

**PLANNING**

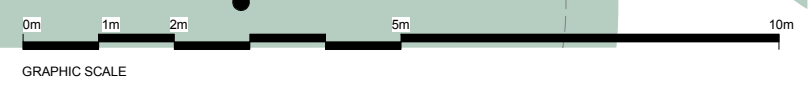
**KSR architects**  
 14 Greenford Street  
 London  
 NW11 2ND  
 t +44 (0)20 7692 5000  
 f +44 (0)20 7692 5050  
 www.ksr-architects.com

**6 NUTLEY TERRACE**  
 London NW3 5BX

**PROPOSED GROUND FLOOR PLAN**

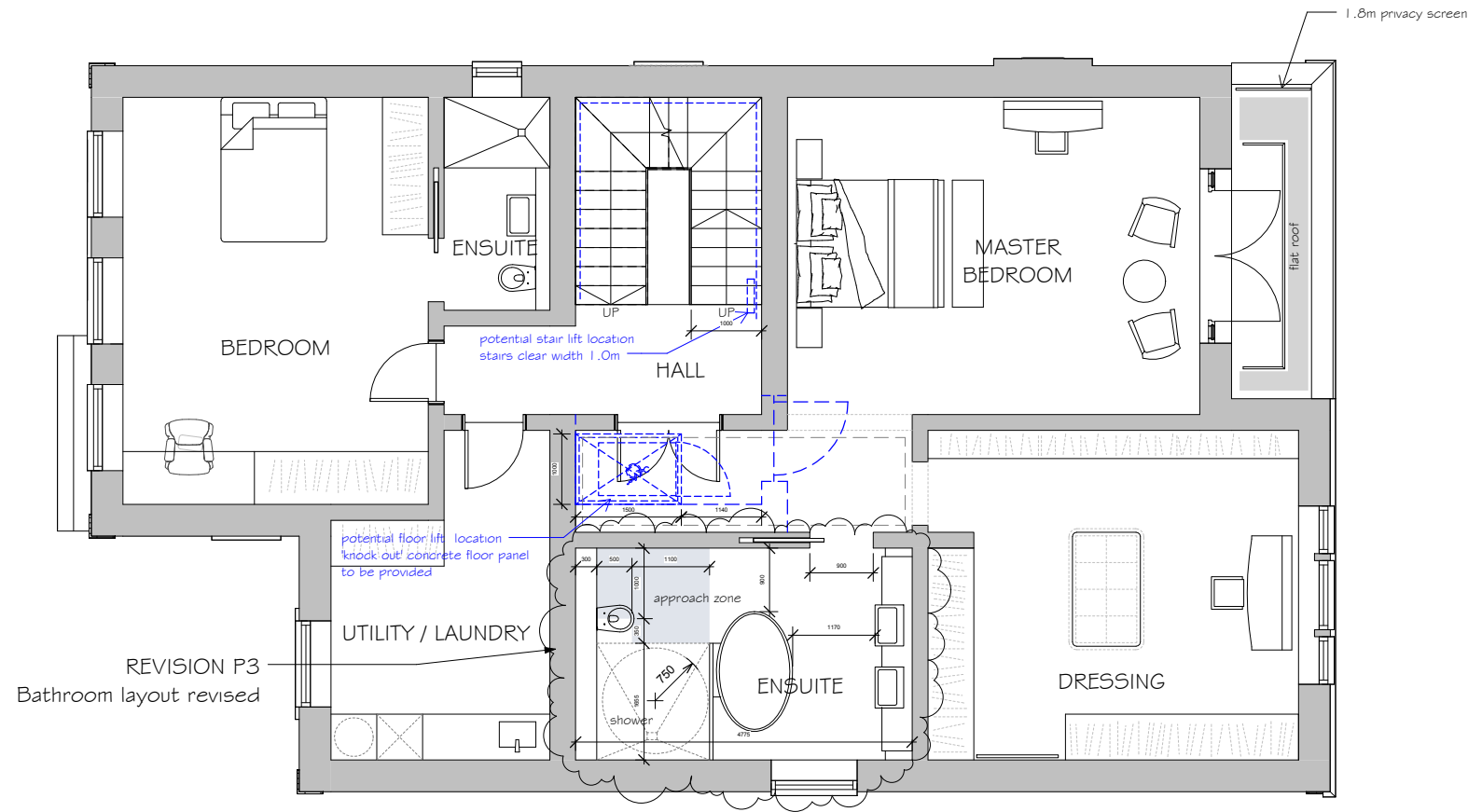
Date: MAY 2012 Drawn By: SHY Checked: RS  
 Scale: 1:50 @A1 / 1:100 @A3

Project Ref: NUT Drawing No: NUT-002 Revision: P3



LINE OF SITE BOUNDARY

HOUSE 6A

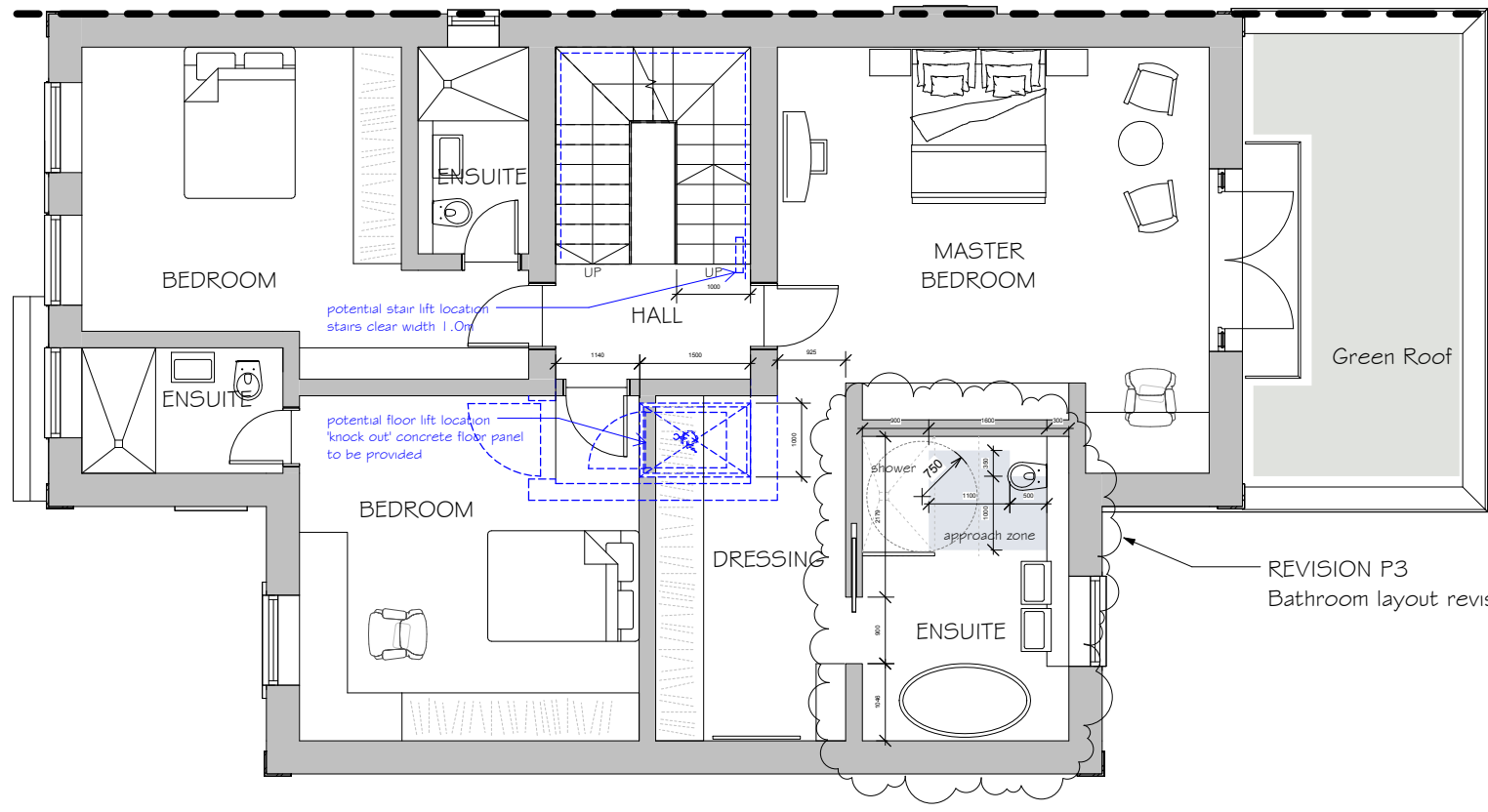


REVISION P3  
Bathroom layout revised

HOUSE 6A

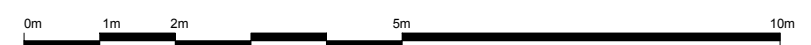
HOUSE 6B

HOUSE 6B



REVISION P3  
Bathroom layout revised

PROPOSED FIRST FLOOR PLAN



GRAPHIC SCALE

General notes:  
This drawing is copyright of KSR architects. The drawings must be read in conjunction with specifications and all other relevant documentation and drawings.  
KSR Architects accept no liability for any expense, loss or damage of whatsoever nature and however arising from any variation made to this drawing or in the execution of the work to which it relates which has not been referred to them and their approval obtained.  
Check all dimensions on site prior to carrying out any works.

Notes/Legends

Revision P3  
Lifetime Homes

**STANDARD 4**  
Level access achieved  
House accessed by 1:17 ramp @ 1.35m length for 80mm level difference.  
Elevation drawing mistake is corrected (NUT-111).

**STANDARD 10**  
Entry level WC layout revised and shown with dimensions. It is fully compliant.

**STANDARD 12**  
Potential lift location & related arrangement shown as Blue dash lines.  
-Stair lift can be installed as stairs clear width (1.0m) is wider than required min. width 900mm  
-Floor lift can be installed as shown without structural alteration. Knock out concrete panel to be provided.

**STANDARD 14**  
First floor main bathroom layout revised and demonstrates that it is fully accessible for wheelchair users.

P3	Revised to comply with Lifetime Homes Standard	08.09.12	SHY	RS
P1	Planning Application Submission	08.05.12	SHY	RS
Rev	Notes	08.09.12	SHY	RS

© KSR architects

Stamp: **PLANNING**



KSR architects  
14 Greenlands Street  
London  
NW1 0ND  
t +44 (0)20 7692 5000  
f +44 (0)20 7692 5050  
www.ksr-architects.com

Project:  
**6 NUTLEY TERRACE**  
London NW3 5BX

Title:  
**PROPOSED FIRST FLOOR PLAN**

Date:	MAY 2012	Drawn By:	SHY	Checked:	RS
-------	----------	-----------	-----	----------	----

Scale:	1:50 @A1 / 1:100 @A3
--------	----------------------

Project Ref:	NUT	Drawing No:	NUT-003	Revision:	P3
--------------	-----	-------------	---------	-----------	----

**General notes:**  
 This drawing is copyright of KSR architects. The drawings must be read in conjunction with specifications and all other relevant documentation and drawings.  
 KSR Architects accept no liability for any expense, loss or damage of whatsoever nature and however arising from any variation made to this drawing or in the execution of the work to which it relates which has not been referred to them and their approval obtained.  
 Check all dimensions on site prior to carrying out any works.

Notes/Legends

**KEYNOTE (MATERIAL REFERENCE)**

- A FACE MASONRY
- B GUAGED BRICKWORK
- C FAIR FACE BRICKWORK
- D BRICK WALLING
- E CAST STONE COPING
- F CAST STONE DETAILS
- G LEAD LINED DORMER
- H SLATE TILE ROOFING
- J HARDWOOD TIMBER DOOR
- K POWDER COATED METAL RAILING
- L TIMBER GATE/FENCE
- M DOUBLE GLAZED TIMBER SASH WINDOW
- N DOUBLE GLAZED TIMBER DOOR
- P PRIVACY SCREEN

**Revision P3**

**Lifetime Homes**

**STANDARD 4**

Level access achieved  
 House accessed by 1:17 ramp  
 @ 1.35m length for 80mm level difference.  
 Elevation drawing mistake is corrected (NUT-111).

**STANDARD 10**

Entry level WC layout revised and shown with dimensions. It is fully compliant.

**STANDARD 12**

Potential lift location & related arrangement shown as Blue dash lines.

-Stair lift can be installed as stairs clear width (1.0m) is wider than required min. width 900mm

-Floor lift can be installed as shown without structural alteration. Knock out concrete panel to be provided.

**STANDARD 14**

First floor main bathroom layout revised and demonstrates that it is fully accessible for wheelchair users.

P3	Revised to comply with Lifetime Homes Standard	06.09.12	SHY	RS
P2	Entrance canopy design change (House A)	20.07.12	SHY	RS
P1	Planning Application Submission	08.05.12	SHY	RS
Rev	Notes	05.05.12	SHY	RS

© KSR architects

Stamp

**PLANNING**

KSR architects  
 14 Greenlands Street  
 London  
 NW1 2ND  
 t +44 (0)20 7692 5000  
 f +44 (0)20 7692 5050  
 www.ksr-architects.com

Project

**6 NUTLEY TERRACE**  
 London NW3 5BX

Title

**PROPOSED FRONT (NORTH) ELEVATION**

Date: MAY 2012 Drawn By: SHY Checked: RS

Scale: 1:50 @A1 / 1:100 @A3

Project Ref: NUT Drawing No: NUT-011 Revision: P3



**PROPOSED FRONT (NORTH) ELEVATION**

