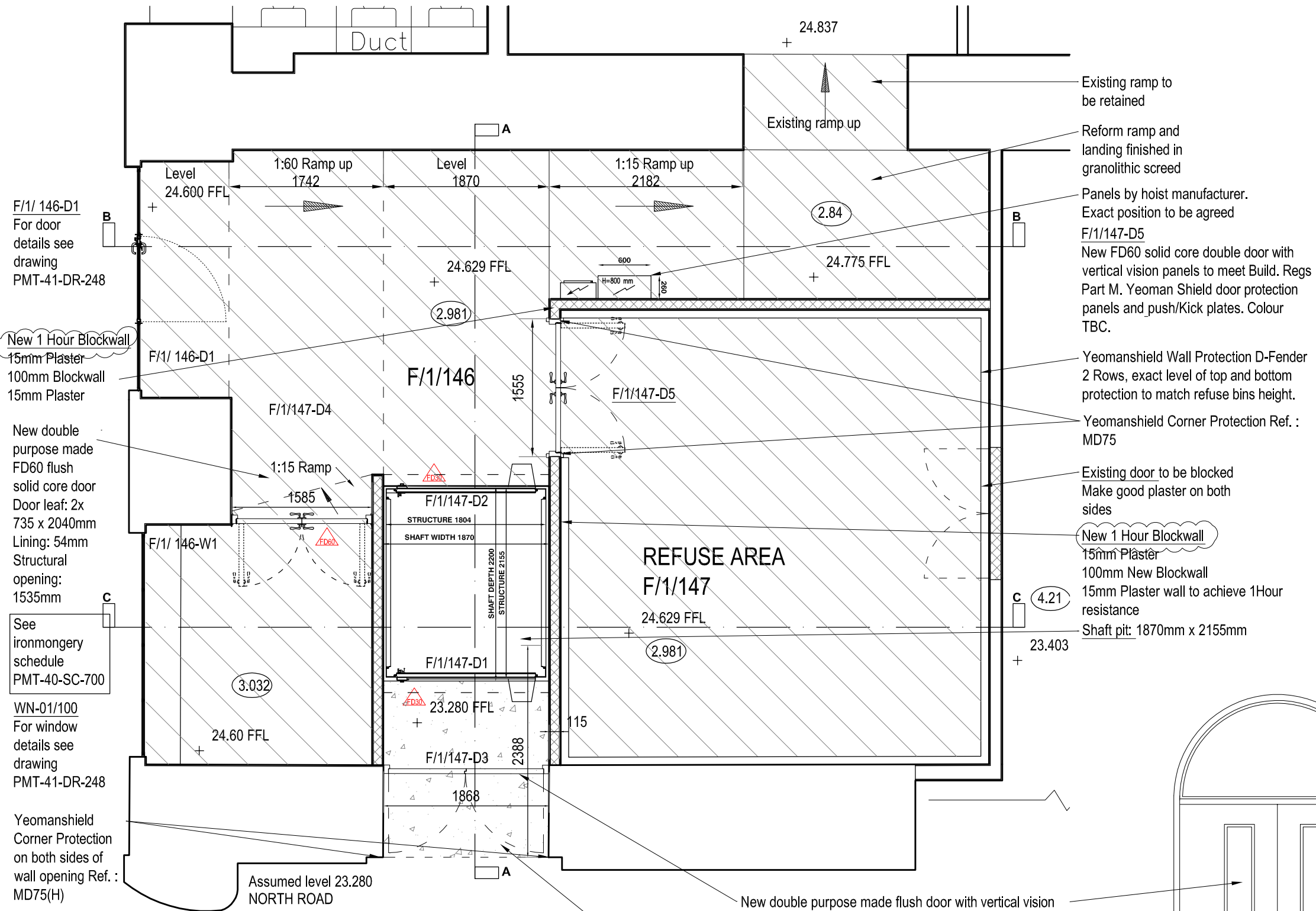


AS PROPOSED PLAN LEVEL 1  
ROOM F/1/147

1:50@A3;1:25@A1



F/1/ 146-D1  
For door  
details see  
drawing  
PMT-41-DR-248

New 1 Hour Blockwall  
15mm Plaster  
100mm Blockwall  
15mm Plaster

New double  
purpose made  
FD60 flush  
solid core door  
Door leaf: 2x  
735 x 2040mm  
Lining: 54mm  
Structural  
opening:  
1535mm

See  
ironmongery  
schedule  
PMT-40-SC-700

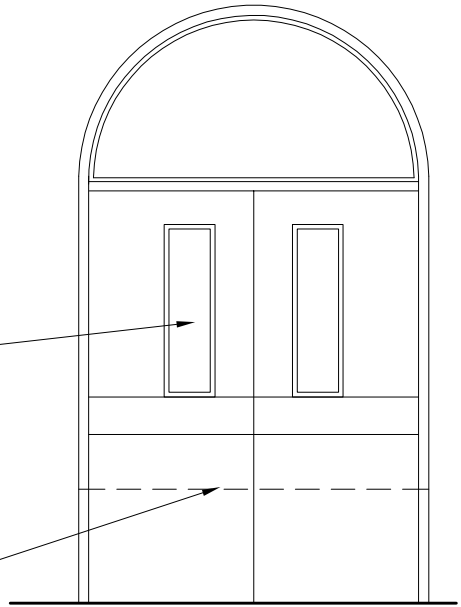
WN-01/100  
For window  
details see  
drawing  
PMT-41-DR-248

Yeomanshield  
Corner Protection  
on both sides of  
wall opening Ref. :  
MD75(H)

Assumptions:  
Level of approach to hoist south door to be level with the  
north road at that point. No precise level available 23.280 is  
the assumed level

**NOTES:-**  
**This drawing to be read in conjunction with Moveman SKG, 123 Abbey Lane, Leicester, LE4 5QX, Tel: 01162252100 Trojan Goods Lift Specification, Trojan Goods Lift Builders Work and Electrical Requirements and & Structural Engineers drawings**

New double purpose made flush door with vertical vision  
panels and shaped fanlight to suit existing brick arched  
opening. (Fan light + vision panels to be in laminated glass  
Door leaf: 880 x 2200mm. To be checked on site.  
Lining: 54mm  
Structural opening (wxh): 1868 x 3192mm To be checked on  
site  
Lowered concrete slab  
Remove brick apron to door way. Lower concrete slab  
to form level threshold to allow direct access from North  
road to the hoist on the same level.



Elevation of Door F/1/147-D3  
Scale 1:20

Lift Requirements

- CLIENT TO PROVIDE
- 1) 415 volt, 3 phase, 50 Hertz (Neutral & Earth) 5 wire, supplied by a 20amp fused & lockable isolator within 2 metres of lift motor room (unsuitable for RCD protection)
  - 2) 240 volt single phase 13amp socket adjacent to the lift for maintenance purposes
  - 3) 50 lux landing lighting at each above each door entrance
  - 4) Plumbness ±3 between levels
  - 5) Floor/pit to be flat smooth and level, at right angles to upper floor fixing point
  - 6) Making good around lift and entrances after installation
  - 7) Live mains power is available on first day of installation
  - 8) Clear internal shaft size, pit recess as specified on this drawing
  - 9) Clear area in front of control panel of 1000mm²
  - 10) 50mm conduit & draw wire through lift shaft wall

SPECIFICATION	
Speed	0.15 metres per second
Pit Size (LxWxD)	2200 x 1870 x 100
Landing Controls	Call, Send, Emergency Stop, Key access
Landing Doors	Galvanised Collapsible Shutter Gates 1 hour fire rated clear opening 1138mm
Car Protection	Picket Gate clear opening 1138mm
Shaft Panels	Self supporting prefabricated modules
Cabin Lighting	Automatic operation by door opening/closing
Shaft Lighting	External switch for maintenance
Internal Car Finish	Beige RAL 7032 walls, White ceiling
External Finish	Black epoxy paint RAL 9005

SPECIFICATION	
Travel	2900
Floors Served	2
Entrances	2
Lifting Capacity	2000Kgs
Headroom	2865
Clear Internal Car Size(LxWxH)	1800 x 1400 x 2200
Structural Shaft Size(LxW)	2200 x 1870 x 5818 including pit

Note  
See lift manufacture specifications to comply with safety, electrical requirements, temporary supply/lighting etc.

For Level 0 Plan &Section A-A see PMT-40-DR-334  
Section B-B see PMT-40-DR-339  
Section C-Csee PMT-40-DR-338

- KEY
- New Block Wall
  - New Concrete Slab
  - Granolithic screed

ISSUED FOR TENDER

E	26/03/2012	JBP	SMu	Note amended and Fire note to walls added		
D	15/03/2012	JBP	SMu	Level 1 Added		
C	24/02/2012	N	SMu	Revise proposals		
REVISION	DATE	DRAWN	CHECKED	DESCRIPTION		
CLIENT	British Museum		SCALE	As Shown	DATE	12 Aug 2011
PROJECT	British Museum WCEC Project		DRAWN	SMu	CHECKED	
DRAWING TITLE			JOB NUMBER		DRAWING NO.	REVISION
As Proposed Hoist			PMT-40-DR-331		E	