

PTL 454 - Radlett Place

External Lighting - North Elevation



External Lighting - East and West Courtyard Elevations



External Lighting Solutions

As limited palette of discrete lighting details are to be introduced provide both local area illumination and controlled facade feature lighting to the property at Radlett Place. These details will be employed across the various building facades as appropriate to ensure a coherent night time presentation.

Rather than flood light the building facade, all feature lighting details are targeted to express specific aspects of the elevation in a controlled manner.

All light sources will be warm white in colour appearance exhibit a minimum efficacy of 80lm/W and will be controlled via photo-cell and astronomical time clock. The feature lighting will typically operate between dusk and a predetermined time likely to be midnight.

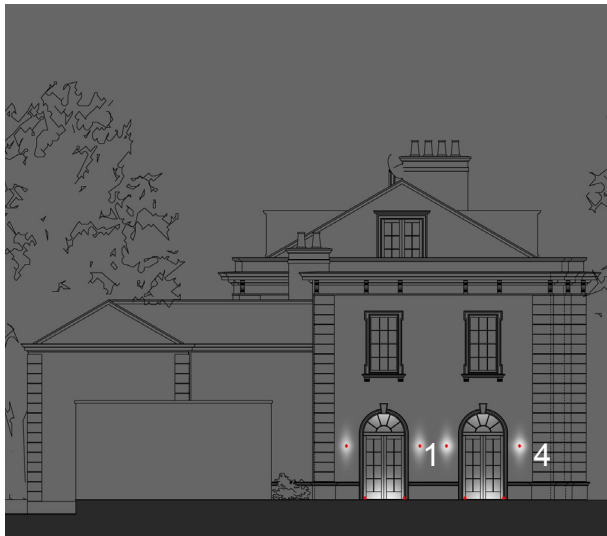
1. Local Area Lighting : A series of building mounted lantern will be located adjacent to the building entrances to deliver light to these locations.
2. Local Area Lighting B: Downlights will be integrated within the entrance portico to complement aforementioned lantern arrangement. Downlighting to be similarly incorporated local to service lift entrance and the garage entrance.
3. Feature Lighting A: A series of low power LED uplights are to be recessed into the window cills. The light emitted from these luminaires will then catch the window reveal.
4. Feature Lighting B: The uplighting theme is extended to the ground level window arches.
5. Feature Lighting C: Low powered LED inground uplights are to located within plant pots to provide illumination to those decorative tress immediately adjacent to the main entrance.

PTL 454 - Radlett Place

External Lighting - South Elevation



External Lighting - East and West Elevations



External Lighting Solutions

A similar approach as previously described for the north elevation will be adopted on the south elevation with a couple of extra feature details introduced in response to specific architectural elements.

1. Local Area Lighting A: A series of building mounted lantern will be located adjacent to the building entrances to deliver light to these locations.

2. Local Area Lighting B: N/A

3. Feature Lighting A: A series of low power LED uplights are to be recessed into the window cills. The light emitted from these luminaires will then catch the window reveal.

4. Feature Lighting B: The uplighting theme is extended to the ground level window arches and French doors.

5. Feature Lighting C: Low powered LED inground uplights are to located within plant pots to provide illumination to those decorative tress immediately adjacent to the main entrance.

6. Feature Lighting C: Discrete LED projectors will be introduced to express the tympanum and so assist in defining the vertical extents of the buildings.

7. Feature Lighting D: Building mounted LED projectors will similarly be employed to provide illumination of the sculptural crest.