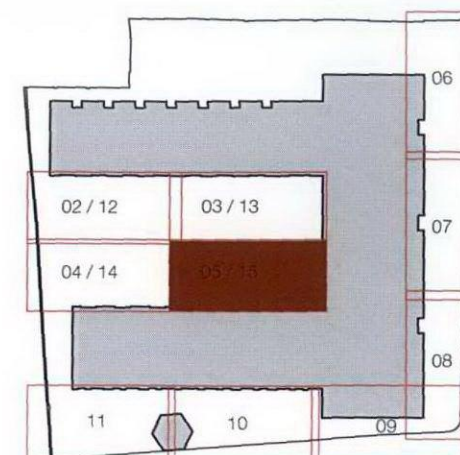


notes  
Drawing to be read in conjunction with  
Hard Landscape drawings and Planting drawings  
FL\_WAI\_P\_001 to FL\_WAI\_P\_015, Schedule of Plants  
FL\_WAI\_S\_010, Setting-out drawing FL\_WAI\_P\_016 and  
Detail Drawings FL\_WAI\_D\_01 to FL\_WAI\_D\_10.

Do not scale from this drawing.  
All measurements to be checked on site.  
For levels and falls, refer to plan drawings above.

All work within the vicinity of existing trees is to be carried out in accordance with the agreed methodology for tree protection for this site and to BS 5837.



revisions  
a: Minor amendments to the setting out of hard landscape works. 28.11.11  
b: Minor amendments to gates, railings & planting in private gardens and adjacent areas. 16.10.12

Waites Houses | plan 15: hard landscape

september 2011 | 1:50 @ a3 | FL\_WAI\_P\_015\_revb

**FORUM** landscape architects  
74 Linzee Road London N8 7RE t:+44(0)20 8341 1411  
mail@forumlandscape.co.uk www.forumlandscape.co.uk