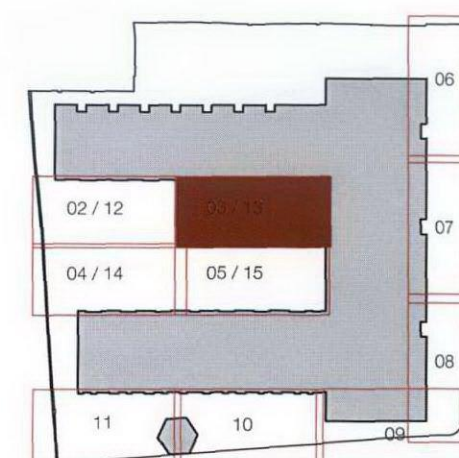


notes
Drawing to be read in conjunction with
Hard Landscape drawings and Planting drawings
FL_WAI_P_001 to FL_WAI_P_015, Schedule of Plants
FL_WAI_S_010, Setting-out drawing FL_WAI_P_016 and
Detail Drawings FL_WAI_D_01 to FL_WAI_D_10.

Do not scale from this drawing.
All measurements to be checked on site.
For levels and falls, refer to plan drawings above.

All work within the vicinity of existing trees is to be carried
out in accordance with the agreed methodology for tree
protection for this site and to BS 5837.



revisions
a: Minor amendments to the setting out of hard
landscape works. 28.11.11
b: Minor amendments to paving along walkway and
adjacent areas. 16.10.12

Waites Houses | plan 13: hard landscape

september 2011 | 1:50 @ a3 | FL_WAI_P_013_revb

FORUM landscape architects
74 Linzee Road London N8 7RE t: +44(0)20 8341 1411
mail@forumlandscape.co.uk www.forumlandscape.co.uk