

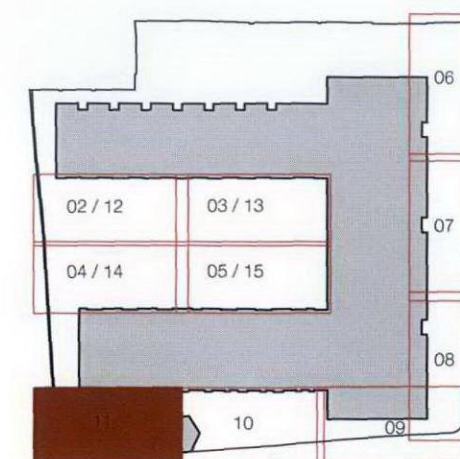
notes

For plant species, sizes, densities and specification, refer to Schedule of Plants FL_WAI_S_010 and Specification for Planting Works FL_WAI_spec_001.

Drawing to be read in conjunction with Hard Landscape drawings and Planting drawings FL_WAI_P_001 to FL_WAI_P_015, Schedule of Plants FL_WAI_S_010, Setting-out drawing FL_WAI_P_016 and Detail Drawings FL_WAI_D_01 to FL_WAI_D_10.

Do not scale from this drawing.
All measurements to be checked on site.
For levels and falls, refer to plan drawings above.

Standard and multi-stem trees to be supplied by Hilliers Nurseries Ltd or Barcham Trees plc. Apple trees, fruit bushes & berries to be supplied by Brogdale Plant Centre. Shrubs, hedging & perennials to be supplied by Robin Tacchi Plants Ltd, Wyevale Nurseries Ltd or Tendercare Ltd, Bulbs & plugs to be supplied by HV Horticulture Ltd (Really Wild Flowers).
All work within the vicinity of existing trees is to be carried out in accordance with the agreed methodology for tree protection for this site and to BS 5837.



revisions
a: Minor amendments to the setting out of hard landscape works. 28.11.11
b: Minor amendments to gates, seats & planting in private gardens and adjacent areas. 16.10.12

Waites Houses | plan 11: planting

september 2011 | 1:50 @ a3 | FL_WAI_P_011_revb

FORUM landscape architects
74 Linzee Road London N8 7RE t: +44(0)20 8341 1411
mail@forumlandscape.co.uk www.forumlandscape.co.uk