

## notes

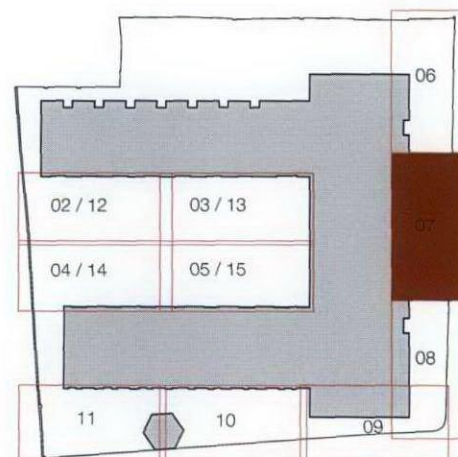
For plant species, sizes, densities and specification, refer to Schedule of Plants FL\_WAI\_S\_010 and Specification for Planting Works FL\_WAI\_spec\_001.

Drawing to be read in conjunction with Hard Landscape drawings and Planting drawings FL\_WAI\_P\_001 to FL\_WAI\_P\_015, Schedule of Plants FL\_WAI\_S\_010, Setting-out drawing FL\_WAI\_P\_016 and Detail Drawings FL\_WAI\_D\_01 to FL\_WAI\_D\_10.

Do not scale from this drawing.  
All measurements to be checked on site.  
For levels and falls, refer to plan drawings above.

Standard and multi-stem trees to be supplied by Hilliers Nurseries Ltd or Barcham Trees plc. Apple trees, fruit bushes & berries to be supplied by Brogdale Plant Centre. Shrubs, hedging & perennials to be supplied by Robin Tacchi Plants Ltd, Wyevale Nurseries Ltd or Tendercare Ltd. Bulbs & plugs to be supplied by HV Horticulture Ltd (Really Wild Flowers).

All work within the vicinity of existing trees is to be carried out in accordance with the agreed methodology for tree protection for this site and to BS 5837.



## revisions

a: Minor amendments to the setting out of hard landscape works. 28.11.11

Waite's Houses | plan 07: planting

september 2011 | 1:50 @ a3 | FL\_WAI\_P\_007\_reva

**FORUM** landscape architects

74 Linzee Road London N8 7RE t:+44(0)20 8341 1411  
mail@forumlandscape.co.uk www.forumlandscape.co.uk