

1 NORTH ELEVATION
1:100

DRAWING
(39)010

PHOTO ①

FACADE TYPE 1
 FACING BRICK:
 Freshfield Lane 'selected dark facings'
 GLAZED BRICK
 Shoulder (grid 14-12 and 7-2); ST. JORIS 'GR-31'
 Tower (grid 12-7); ST. JORIS 'GR-49'
 PRECAST CONCRETE:
 Marble Mosaic 8.59.B (15% Grey/85% White)
 SEALANT:
 Arbostl anthracite
 MORTAR:
 Tarmac Y14 - grey
 WINDOW COLOUR:
 level 1-15: RAL 6008
 ground floor: RAL 8019
 METALWORK COLOUR: RAL 8019
 JULIETTE BALUSTRADE TYPE 2
 WINDOW BALUSTRADE TYPE 1
 INSET BALCONY BALUSTRADE TYPE 1:
 window W04
 window W04H

ELEVATION KEY

- FRESHFIELD LANE 'SELECTED DARK FACINGS'
- IBSTOCK 'THROCKLEY SMOOTH GREY'
- IBSTOCK 'ALPINE GREY'
- ST. JORIS 'GR-31' - GLAZED
- ST. JORIS 'GR-49' - GLAZED
- ST. JORIS '14 QF - 10.4' - GLAZED
- VERTICAL MOVEMENT JOINT
- HORIZONTAL MOVEMENT JOINT
- 3RD COURSES OF ANCON AMR

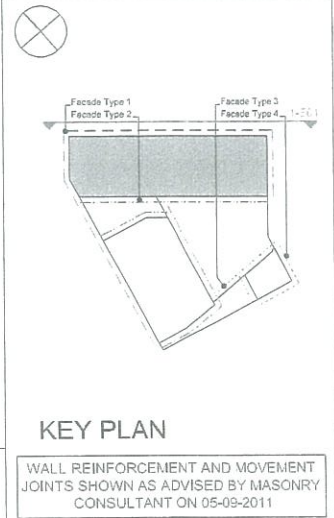
WHITE DIFFUSER GLASS
SEE SHEET SSF 187

notes

- The contractor is responsible for checking dimensions, tolerances and references. Any discrepancy to be notified with the Architect before proceeding with the works.
- Where an item is covered by drawings to different scales the larger scale drawing is to be worked to.
- Do not scale drawing. Figure dimensions to be worked to in all cases.

CDM Regulations 2007

All current drawings and specifications for the project must be read in conjunction with the Designer's Hazard and Environmental Assessment Report.



date	rev	revision/author/checker
02.10.12	23	Front entry gate amended as per Contractors direction CD No. 0010023 dated 06.06.12 and attached MLA sketch drawings. Wall mounted external lights added to building facade as per MLA mark ups dated 05.12.11.
11.06.12	22	Window tags clarified.
14.03.12	21	Glazed air bricks added to one bay on levels 8 to 15.
02.02.12	20	ACV W10 replaced with W10L and W10R. Updated to suit client's comments as clouded.
21.10.11	19	Updated to suit client's comments as clouded.
06.06.11	18	Fixtures notes and movement joints updated; brick reinforcement added.
26.08.11	17	Notes for balustrade type revised.
18.06.11	16	WHV Vent remove as bubbled. ML.
12.08.11	15	Fixtures notes added.
11.07.11	14	Glazed Brick Module updated. WHV vents added. AC. Issued for Construction MSB.
21.06.11	13	Movement joints amended.
10.06.11	12	Ground floor fenestration & MJ revised. AC.
03.06.11	11	Curtain wall transoms lowered. Louvre panels shown to top of curtain wall.
27.05.11	10	W04 omitted (adjacent to GL 2) & W04H added. AC.
20.05.11	09	Movement joints added. AC.
		Spanrel panels omitted. glazed bricks added. Height of windows W016 W10 reduced.
13.05.11	08	
27.04.11	07	For Comment
20.04.11	06	Amended to MLA comments dated 18.04.11.
		Gates revised, opening leaf added to CW05 & CW12 and manifestation revised to CW05 & CW09. ACAMB.
06.04.11	05	
18.03.11	04	Windows are updated, followed by MLA drawings. ML.
11.03.11	03	Brickwork above entrance revised. AC.
04.03.11	02	Ground floor levels revised & brickwork setting out revised. AC.
		Ground floor curtain walling updated. AC.
21.01.11	01	Plinth & surround to ground floor updated. Windows, curtain walling and doors scheduled & setting out revised. Parapet level revised. AOV's indicated. Ground level and FFL updated to match PRP drawing SK40. AC.
23.12.10	00	First Issue - DRAFT

purpose of issue
FOR CONSTRUCTION

project
KINGS CROSS CENTRAL BLOCK R5

drawing
ELEVATION NORTH BLOCK YORK WAY

drawing no AA0716C(20)E01	rev 23
drawn AJH	checked MB
scale @ A1 1:100	date Dec 2010

notes

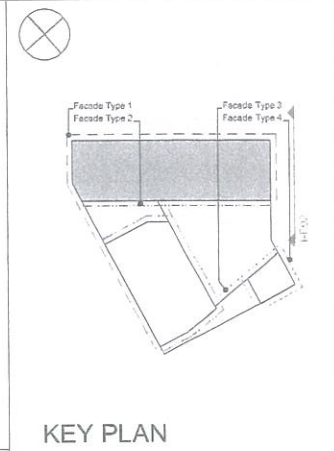
- The contractor is responsible for checking dimensions, tolerances and references. Any discrepancy to be notified with the Architect before proceeding with the work.
- Where an item is covered by drawings to different scales the larger scale drawing is to be worked to.
- Do not scale drawing. Figured dimensions to be worked to in all cases.

CDM Regulations 2007

All current drawings and specifications for the project must be read in conjunction with the Designer's Hazard and Environmental Assessment Report.

ELEVATION KEY

- FRESHFIELD LANE 'SELECTED DARK FACINGS'
- IBSTOCK 'THROCKLEY SMOOTH GREY'
- IBSTOCK 'ALPINE GREY'
- ST. JORIS 'GR-31' - GLAZED
- ST. JORIS 'GR-49' - GLAZED
- ST. JORIS '144 OF - 10.4' - GLAZED
- VERTICAL MOVEMENT JOINT
- HORIZONTAL MOVEMENT JOINT
- 3NO COURSES OF ANCON AMR



FACADE TYPE 1

FACING BRICK:
Freshfield Lane 'selected dark facings'
GLAZED BRICK:
Shoulder (level 1-8): ST. JORIS 'GR-31'
Tower (level 9-15): ST. JORIS 'GR-49'

PRECAST CONCRETE:
Marble Mosaic 9.59.B (15% Grey/85% White)

SEALANT:
Arbofill anthracite

MORTAR:
Tarmac Y14 - grey

WINDOW COLOUR:
level 1-15: RAL 6008
ground floor: RAL 8019

METALWORK COLOUR: RAL 8019

JULIETTE BALUSTRADE TYPE 2
WINDOW BALUSTRADE TYPE 1
INSET BALCONY BALUSTRADE TYPE 3:
window W03

KEY PLAN

WALL REINFORCEMENT AND MOVEMENT JOINTS SHOWN AS ADVISED BY MASONRY CONSULTANT ON 05-09-2011

date	rev	revision/author/checker
02.10.12	17	Wall mounted external lights added to building facade as per MIA mark ups dated 05.12.11. Infill panels to courtyard wall amended as per MIA's sketch.
21.10.11	16	Updated to suit client's comments as detailed.
06.09.11	15	Finalise notes and movement joints updated: brick reinforcement added
26.08.11	14	Notes for balustrade type revised.
12.08.11	13	Finalise notes added
11.07.11	12	Glazed Brick Module updated. Horizontal MJA amended. WHV vents added. Issued for Construction MSB
10.06.11	11	Ground floor fenestration & MJ revised. AC
03.06.11	10	Curtain wall transoms lowered. Louvre panels shown to top of curtain wall.
20.06.11	09	Movement joints added. AC
13.05.11	08	Spandrel panels omitted. Glazed bricks added. Height of window W01 reduced.
27.04.11	07	For Comment
20.04.11	06	Amended to MIA comments dated 18.04.11.
08.04.11	05	Opening leaf added to CW03. AC/MB.
18.03.11	04	Windows are updated, followed by MIA drawings. MB
11.03.11	03	Brickwork above CW01 & CW02 revised. AC.
04.03.11	02	Ground floor levels revised. AC. Ground floor curtain walling updated. AC.
21.01.11	01	Pilth & surround to ground floor updated. Windows, curtain walling and doors scheduled & setting out revised. Parapet level revised. Ground level and FFL updated to match PRP drawing SH46. AC.
23.12.10	00	First Issue - DRAFT

purpose of issue
FOR CONSTRUCTION

project
KINGS CROSS CENTRAL BLOCK R5

drawing
ELEVATION NORTH BLOCK EAST STREET

drawing no	rev
AA0716C(20)E02	17
drawn	checked
AJH	MB
scale @ A1	date
1:100	Dec 2010

PRP Architects ©
10 Lindsey Street
London
EC1A 9HP

T +44 (0)20 7653 1200
F +44 (0)20 7653 1201
lon.prp@prparchitects.co.uk

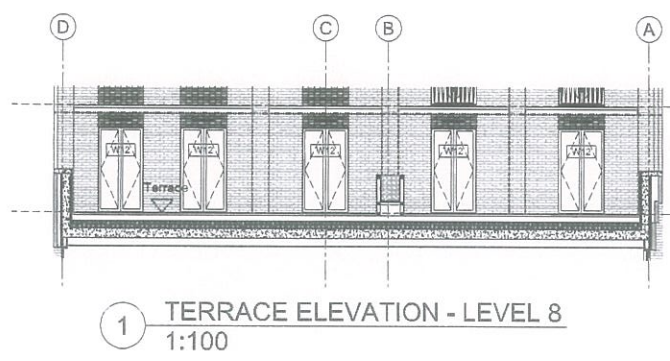


PHOTO 4

2 EAST ELEVATION 1:100



- ELEVATION KEY**
- FRESHFIELD LANE 'SELECTED DARK FACINGS'
 - 'IBSTOCK' THROCKLEY SMOOTH GREY
 - 'IBSTOCK' ALPINE GREY
 - ST JORIS 156-31 - GLAZED
 - ST JORIS 156-49 - GLAZED
 - ST JORIS 148 06-101 - GLAZED
 - VERTICAL MOVEMENT JOINT
 - HORIZONTAL MOVEMENT JOINT
 - TWO COURSES OF BRICK ON AMP
- FACADE TYPE 2**
- FACING BRICK:**
 General: 'Ibstock' Throckley smooth grey'
 Window recess: 'Ibstock' Alpine grey'
- PRECAST CONCRETE:**
 Marble Mosaic 2.52.A (10%G)
- SEALANT:**
 Arbosil buff
- MORTAR:**
 Tammac Y111 - buff
- WINDOW COLOUR:**
 RAL 7006
- METALWORK COLOUR:** RAL 8019
- JULIETTE BALUSTRADE TYPE 4**
WINDOW BALUSTRADE TYPE 6
BOLT-ON BALCONY BALUSTRADE

notes

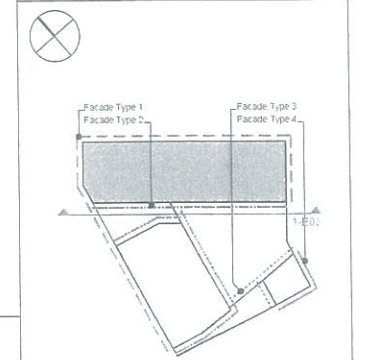
The contractor is responsible for checking dimensions, tolerances and references. Any discrepancy to be verified with the Architect before proceeding with the works.

Where an item is covered by drawings, to different scales the larger scale drawing is to be worked to.

Do not scale drawing. Figured dimensions to be worked to in all cases.

CDM Regulations 2007

ALL current drawings and specifications for the project must be read in conjunction with the Designer's Hazard and Environmental Assessment Report.



KEY PLAN

WALL REINFORCEMENT AND MOVEMENT JOINTS SHOWN AS ADVISED BY MASONRY CONSULTANT ON 05-09-2011

WHITE DIFFUSER GLASS - SEE SHEET SSF187.

date	rev	revision/author/checker
21.10.11	17	Updated to suit client's comments as detailed
19.09.11	16	Finishes notes and movement joints updated, bed reinforcement added, MU and windows near grid 12 moved by half a brick as detailed
26.06.11	15	Balustrade type revised as detailed
12.06.11	14	Finishes notes added
11.07.11	13	Horizontal MU's amended, Venti vents added, Issued for Construction MSE
21.06.11	12	External door updated, Double line removed from window
02.06.11	11	Canopy thickness corrected
30.05.11	10	Movement joints added AC
12.05.11	09	Height of windows W20, W22 reduced
27.04.11	08	For Comment
20.04.11	07	Amended to MLA comments dated to 14.11
09.04.11	06	Balconies revised and operable heat to EC01 omitted, AC/AD balcony steelwork added ML
21.03.11	05	Windows are updated, followed by MLA drawings ML
16.02.11	04	Floor levels & balconies revised AC
11.03.11	03	Ground floor external doors updated, window references updated AC
04.02.11	02	Windows and doors scheduled Window setting out revised, Parapet level revised AC's indicated, Ground level and FFL updated to match FRP drawing SF-01 AC
21.01.11	01	Windows and doors scheduled Window setting out revised, Parapet level revised AC's indicated, Ground level and FFL updated to match FRP drawing SF-01 AC
28.12.10	00	First Issue - DRAFT

purpose of issue

FOR CONSTRUCTION

project

KINGS CROSS CENTRAL BLOCK R5

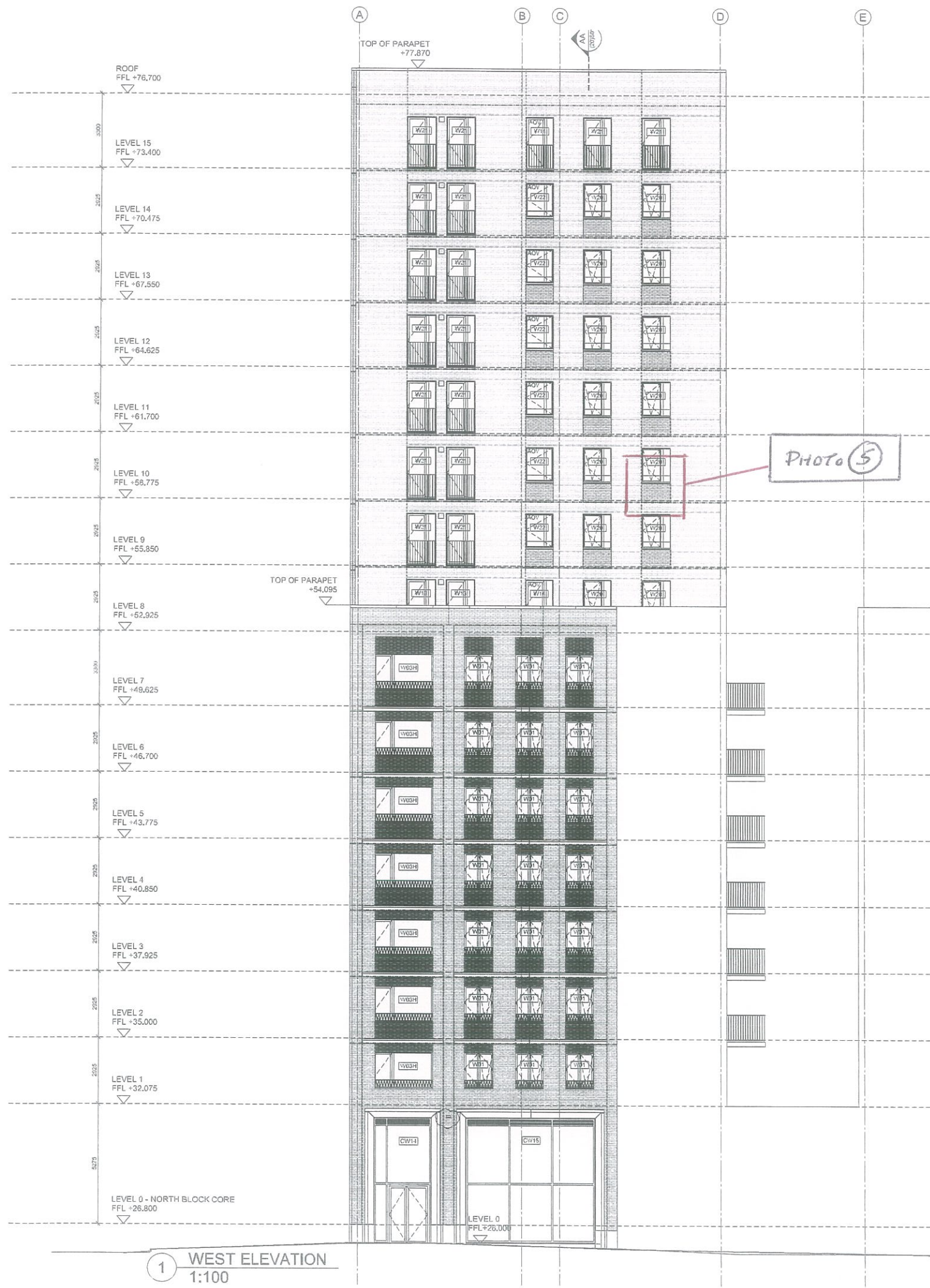
drawing

ELEVATION NORTH BLOCK COURTYARD

drawing no	AA0716C(20)E03	rev	17
drawn	AJH	checked	MB
scale @ A1	1:100	date	Dec 2010

1 SOUTH ELEVATION
 1:100

COURTYARD CANOPY DRAWING (90) 012.



ELEVATION KEY

- FRESHFIELD LANE 'SELECTED DARK FACINGS'
- IBSTOCK 'THROCKLEY SMOOTH GREY'
- IBSTOCK 'ALPINE GREY'
- ST. JORIS 'GR-31' - GLAZED
- ST. JORIS 'GR-18' - GLAZED
- ST. JORIS '144 GF - 10.4' - GLAZED
- VERTICAL MOVEMENT JOINT
- HORIZONTAL MOVEMENT JOINT
- SINO COURSES OF ANCON AIR

FACADE TYPE 2 Tower (level 8-15)

FACING BRICK:
General: Ibstock 'Throckley smooth grey'
Window recess: Ibstock 'Alpine grey'

PRECAST CONCRETE:
Marble Mosaic 2.52.A (10%G)

SEALANT:
Arbostill buff

MORTAR:
Tarmac Y111 - buff

WINDOW COLOUR: RAL 7006

METALWORK COLOUR: RAL 8018

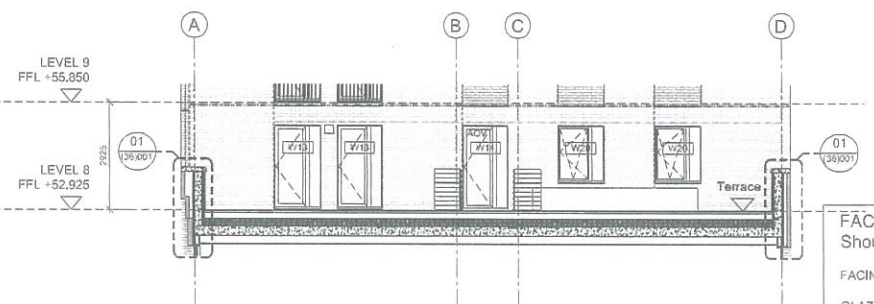
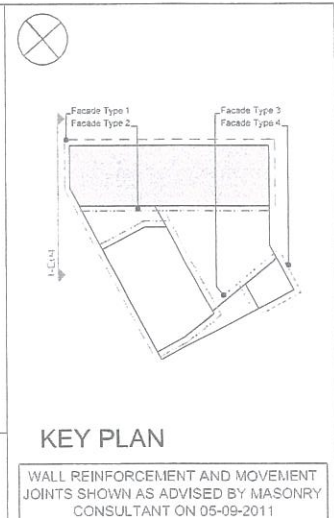
JULIETTE BALUSTRADE TYPE 4
WINDOW BALUSTRADE TYPE 6

notes

- The contractor is responsible for checking dimensions, tolerances and references. Any discrepancy to be notified with the Architect before proceeding with the works.
- Where an item is covered by drawings to different scales the larger scale drawing is to be adopted.
- Do not scale drawings. Figure dimensions to be worked to in all cases.

CDM Regulations 2007

All current drawings and specifications for the project must be read in conjunction with the Designer's Hazard and Environmental Assessment Report.



FACADE TYPE 1 Shoulder (Level 1-7)

FACING BRICK:
Freshfield Lane 'selected dark facings'

GLAZED BRICK:
ST. JORIS 'GR-31'

PRECAST CONCRETE:
Marble Mosaic 9.58.B (15% Grey/85% White)

SEALANT:
Arbostill anthracite

MORTAR:
Tarmac Y14 - grey

WINDOW COLOUR:
Level 1-7: RAL 6008
ground floor: RAL 8019

METALWORK COLOUR: RAL 8019

WINDOW BALUSTRADE TYPE 1
INSET BALCONY BALUSTRADE TYPE 3:
window W03H

date	rev	revision/author/checker
02.10.12	18	Wall mounted external lights added to building facade as per MLA mark-ups dated 05.12.11.
21.10.11	17	Updated to suit client's comments as dated 05.08.11
05.08.11	16	Finishes notes and movement joints updated: brick reinforcement added
26.08.11	15	Notes for balustrade type revised.
12.08.11	14	Finishes notes added
11.07.11	13	Glazed Brick Module updated. Horizontal MJ's amended. W11/12 revised. Issued for Construction MSB
21.06.11	12	Movement joints amended. Ground floor fenestration and MJ revised. AC
10.06.11	11	
03.06.11	10	Curtain wall transoms lowered. Louvre panels shown to top of curtainwall.
20.05.11	09	Movement joints added. AC. Spandrel panels omitted, glazed bricks added. Height of windows W016, W20 reduced.
13.05.11	08	
27.04.11	07	For Comment
20.04.11	06	Amended to MLA comments dated 18.04.11.
08.04.11	05	Opening leaf added to CW14. AC/13.
21.03.11	04	Balcony steelwork added. ML
18.03.11	03	Windows now updated, followed by MLA drawings. ML
04.03.11	02	Ground floor curtain walling updated. window references updated. AC.
21.01.11	01	Plinth & surround to ground floor updated. Windows, curtain walling and doors scheduled & setting out revised. Parapet level revised. Ground level and FFL updated to match PRP drawing SK-40. AC.
23.12.10	00	First Issue - DRAFT

purpose of issue
FOR CONSTRUCTION

project
KINGS CROSS CENTRAL BLOCK R5

drawing
ELEVATION NORTH BLOCK CUBITT PASSAGE

drawing no	rev
AA0716C(20)E04	18
drawn AJH	checked MB
scale @ A1 1:100	date Dec 2010

NOTES

- The contractor is responsible for checking dimensions, tolerances and references. Any discrepancy to be verified with the Architect before proceeding with the works.
- Where an item is covered by drawings to different scales the larger scale drawing is to be worked to.
- Do not scale drawing. Figured dimensions to be worked to in all cases.

CDM Regulations 2007

All current drawings and specifications for the project must be read in conjunction with the Designer's Hazard and Environmental Assessment Record.

ELEVATION KEY

- FRESHFIELD LANE 'SELECTED DARK FACINGS'
- IBSTOCK 'THROCKLEY SMOOTH GREY'
- IBSTOCK 'ALPINE GREY'
- ST. JORIS 'GR-31' - GLAZED
- ST. JORIS 'GR-49' - GLAZED
- ST. JORIS '144 GF - 10.4' - GLAZED

--- VERTICAL MOVEMENT JOINT
 - - - HORIZONTAL MOVEMENT JOINT
 - - - - - 3RD COURSES OF ANCON AMR

FACADE TYPE 2

FACING BRICK:
 General: Ibstock 'Throckley smooth grey'
 Window inset: Ibstock 'Alpine grey'

PRECAST CONCRETE:
 Marble Mosaic 2.82.A (10%G)

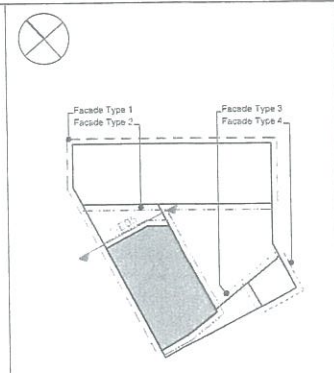
SEALANT:
 Arbosil buff

MORTAR:
 Tarmac Y111 - buff

WINDOW COLOUR: RAL 7066

METALWORK COLOUR: RAL 8019

WINDOW BALUSTRADE TYPE 6



KEY PLAN

WALL REINFORCEMENT AND MOVEMENT JOINTS SHOWN AS ADVISED BY MASONRY CONSULTANT ON 05-09-2011

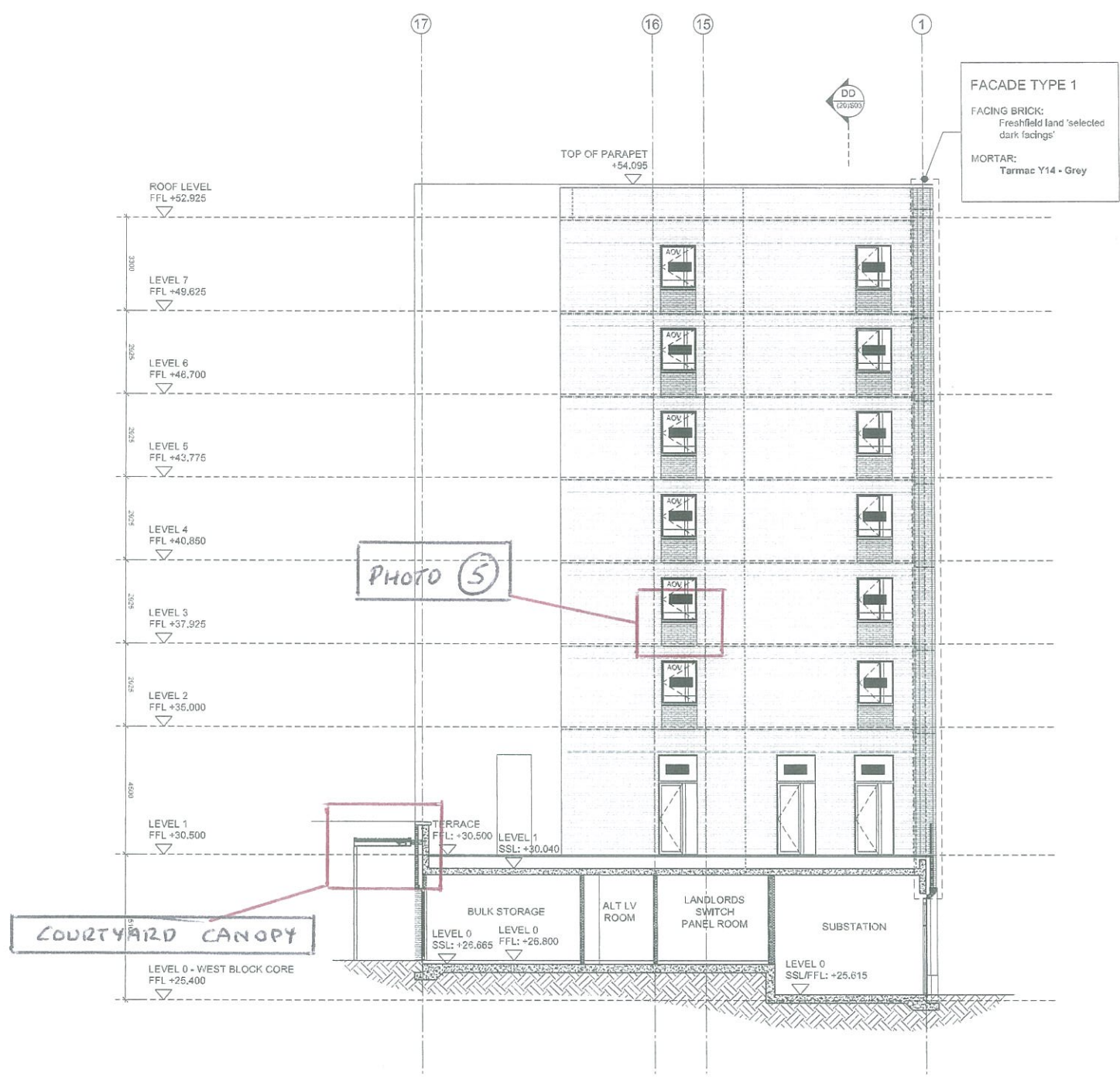
date	rev	revision/author/checker
12.01.12	17	vent location amended.
04.11.11	16	Brickwork reinforcement added as cluded
21.10.11	15	Updated to suit client's comments: brickwork added.
09.09.11	14	Finishes notes and movement joints updated: brick reinforcement added
12.08.11	13	Finishes notes added
11.07.11	12	Horizontal MJo amended, Window references amended, Issued for Construction MSB
21.06.11	11	Plant and storage areas below terrace updated.
03.05.11	10	Canopy width and depth amended, Movement joints added, AC.
20.05.11	09	Spandrel panels omitted, glazed bricks added. Height of windows W20 & W22 reduced.
13.05.11	08	
27.04.11	07	For Comment
20.04.11	06	Amended to MLA comments dated 18.04.11.
08.04.11	05	Level access indicated to W15 & roof level omitted, AC/MSB.
18.03.11	04	Windows are updated, followed by MLA drawings, ML
11.03.11	03	Levels revised & true elevation added, AC.
03.04.11	02	Window references revised, Ground floor curtain walling updated, Railings revised AC.
21.01.11	01	Window setting out re-issued. Section updated, Parapet level revised, AOV's indicated. Ground level and FFL updated to match FRP drawing SK4D, AC.
23.12.10	00	First Issue - DRAFT

purpose of issue
FOR CONSTRUCTION

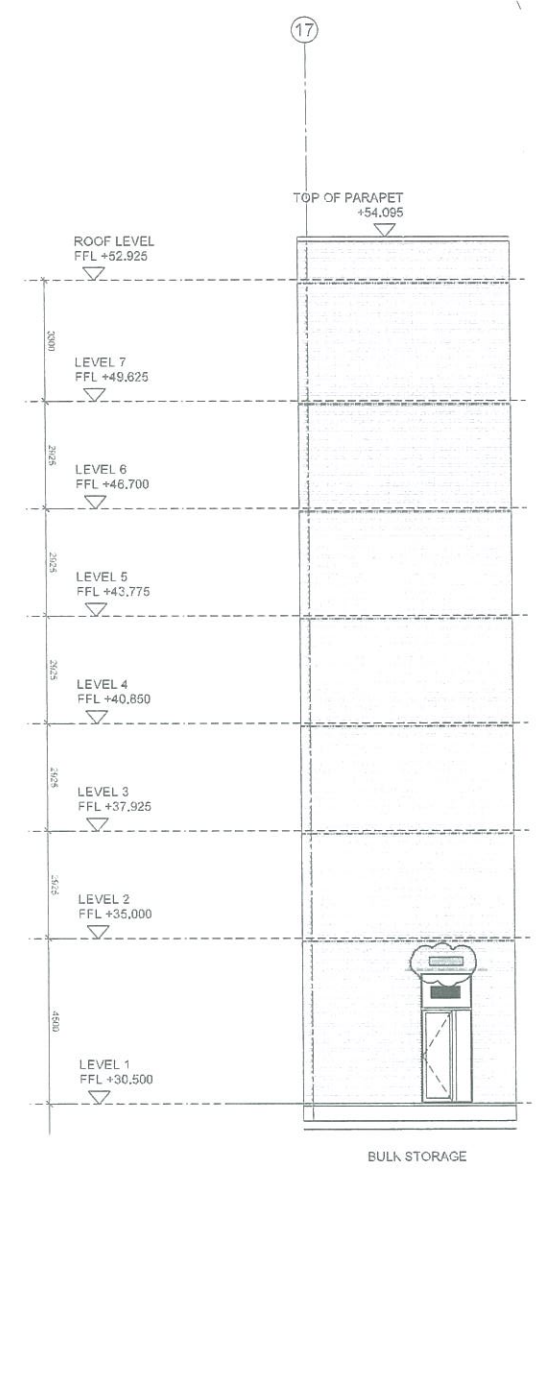
project
KINGS CROSS CENTRAL BLOCK R5

drawing
ELEVATION WEST BLOCK COURTYARD

drawing no	rev
AA0716C(20)E05	17
drawn	checked
AJH	MB
scale @ A1	date
1:100	Dec 2010



1 NORTH ELEVATION
 1:100



2 NORTH ELEVATION (TRUE ELEVATION)
 1:100



Bird and Bal box key

- Schwegler Brick box No.25
- Schwegler Sparrow terrace 1SP
- Schwegler 1FR Bal tube
- Schwegler 1HE Brick bird box

ELEVATION KEY

- FRESHFIELD LANE 'SELECTED DARK FACINGS'
- IBSTOCK 'THROCKLEY SMOOTH GREY'
- IBSTOCK 'ALPINE GREY'
- ST. JORIS 'GR-31' - GLAZED
- ST. JORIS 'GR-49' - GLAZED
- ST. JORIS '144 GF' - 10.4" - GLAZED
- VERTICAL MOVEMENT JOINT
- HORIZONTAL MOVEMENT JOINT
- SINO COURSES OF ANCON AMR

FACADE TYPE 2

FACING BRICK:
General: Ibstock 'Throckley smooth grey'
Window recess: Ibstock 'Alpine grey'

PRECAST CONCRETE:
Marble Mosaic 2.52.A (10%G)

SEALANT:
Arbocoll buff

MORTAR:
Tarmac Y111 - buff

WINDOW COLOUR: RAL 7006

METALWORK COLOUR: RAL 8019

JULIETTE BALUSTRADE TYPE 4
WINDOW BALUSTRADE TYPE 6
BOLT-ON BALCONY BALUSTRADE

notes

- The contractor is responsible for checking dimensions, tolerances and references. Any discrepancy to be verified with the Architect before proceeding with the works.
- Where an item is covered by drawings to different scales the larger scale drawing is to be worked to.
- Do not scale drawings. Figure dimensions to be worked to in all cases.

CDM Regulations 2007

All current drawings and specifications for the project must be read in conjunction with the Designer's Hazard and Environmental Assessment Report.

KEY PLAN

WALL REINFORCEMENT AND MOVEMENT JOINTS SHOWN AS ADVISED BY MASONRY CONSULTANT ON 05-09-2011

date	rev	revision/author/checker
04.09.12	21	BIRD and bal box locations amended.
07.06.12	20	BIRD and bal box types amended.
06.06.12	19	BIRD and bal box locations and types ended.
12.01.12	18	Drawing references added. Vent locations amended. Horizontal movement joint stopped short of level 1 west block terrace.
21.10.11	17	Updated to suit client's comments
06.09.11	16	Finishes notes and movement joints updated; bal reinforcement added
20.06.11	15	Balustrade type revised as discussed
12.06.11	14	Finishes notes added.
11.07.11	13	Glazed Brick Module updated; Horizontal MJ's amended; WHV vents added; Canopy Extensions; Window references amended; Issued for Construction. MSB
21.06.11	12	Stone capping piece added.
03.06.11	11	Canopy depth amended.
20.05.11	10	Movement joints added. AC.
13.05.11	09	Spandrel panels omitted; glazed balustrade added. Height of windows W20 reduced.
27.04.11	08	For Comment
20.04.11	07	Amended to MLA comments dated 18.04.11.
06.04.11	06	Roof level omitted and openable leaf to W17 in abeyance. AC/MSB.
25.03.11	05	Extent of revised canopy updated. AH.
18.03.11	04	Windows are updated. followed by MLA drawings. ML
11.03.11	03	Balcony revised. AC.
04.05.11	02	Ground floor curtain walling updated; window reference updated. Railings & levels re-issued AC.
21.01.11	01	Windows and doors scheduled. Window Joints revised. Parapet level revised. Ground level and FFL updated to match PRP drawing SK40. AC.
23.12.10	00	First Issue - DRAFT

purpose of issue
FOR CONSTRUCTION

project
KINGS CROSS CENTRAL BLOCK R5

drawing
ELEVATION WEST BLOCK COURTYARD

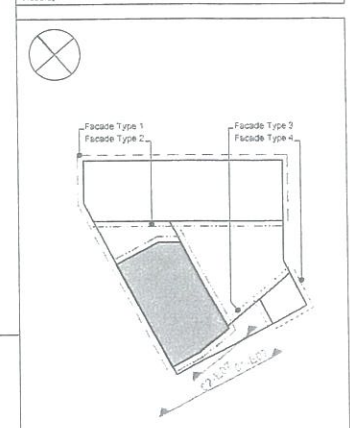
drawing no	AA0716C(20)E06	rev	21
drawn	AJH	checked	MS
scale @ A1	1:100	date	Dec 2010

NOTES

- The contractor is responsible for checking dimensions, tolerances and references. Any discrepancy is to be verified with the Architect before proceeding with the works.
- Where an item is covered by drawings to different scales the larger scale drawing is to be worked to.
- Do not scale drawing. Figure dimensions to be worked to in all cases.

CDM Regulations 2007

ALL current drawings and specifications for the project must be read in conjunction with the Designer's Hazard and Environmental Assessment Report.



KEY PLAN

WALL REINFORCEMENT AND MOVEMENT JOINTS SHOWN AS ADVISED BY MASONRY CONSULTANT ON 05-09-2011

ELEVATION KEY

- FRESHFIELD LANE 'SELECTED DARI' FACINGS
- IBSTOCK 'THROCKLEY SMOOTH GREY'
- IBSTOCK 'ALPINE GREY'
- ST. JORIS 'GR-01' - GLAZED
- ST. JORIS 'GR-05' - GLAZED
- ST. JORIS '144 GF - 10.4' - GLAZED
- VERTICAL MOVEMENT JOINT
- HORIZONTAL MOVEMENT JOINT
- 3NO COURSES OF ANCON AMR

FACADE TYPE 2

FACING BRICK:
General: Istock 'Throckley smooth grey'
Window recess: Istock 'Alpine grey'

PRECAST CONCRETE:
Marble Mosaic 2.52.A (10%G)

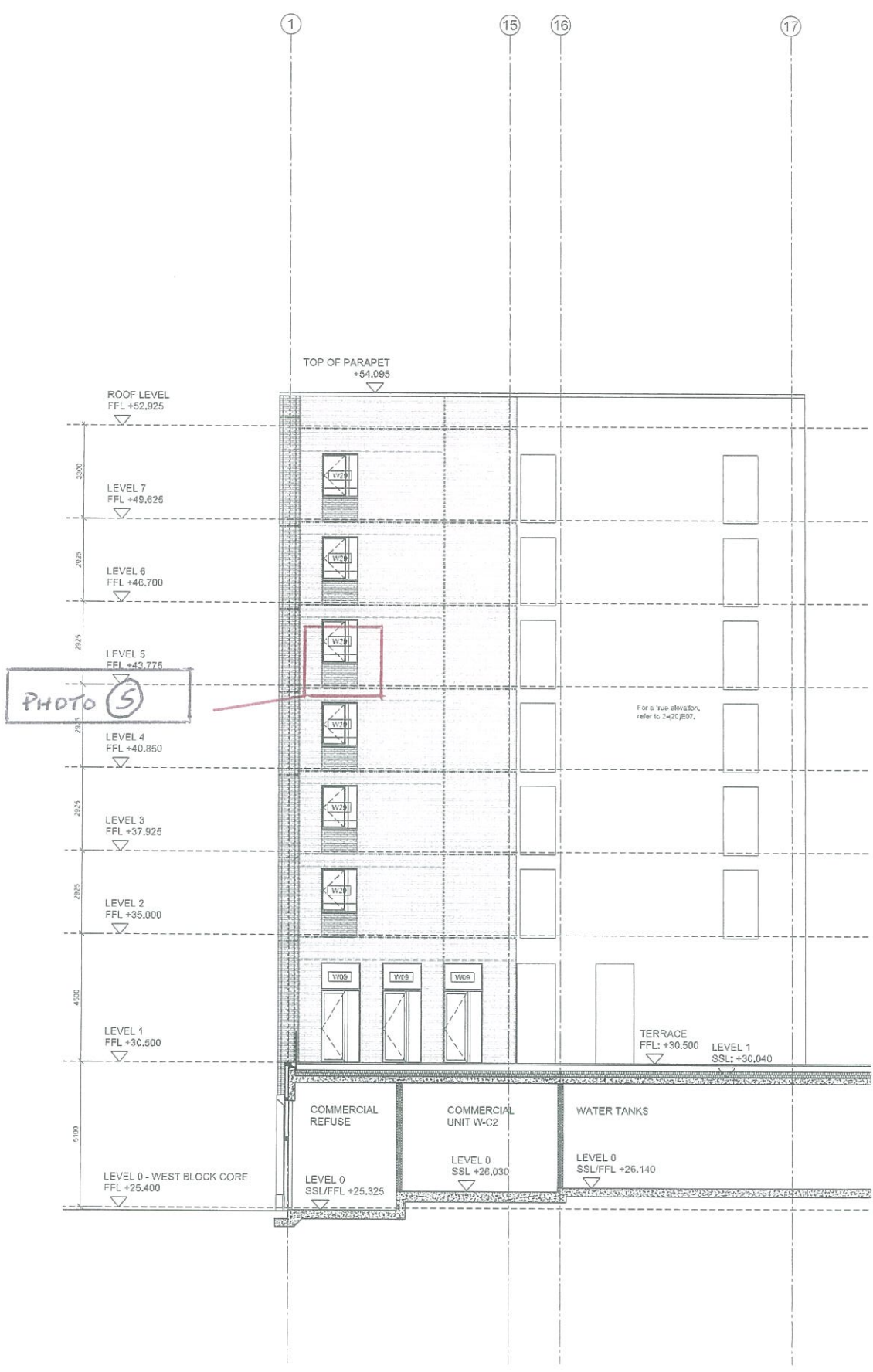
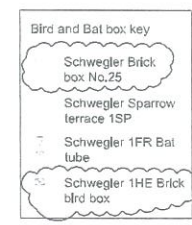
SEALANT:
Arbostill buff

MORTAR:
Tarmac Y111 - buff

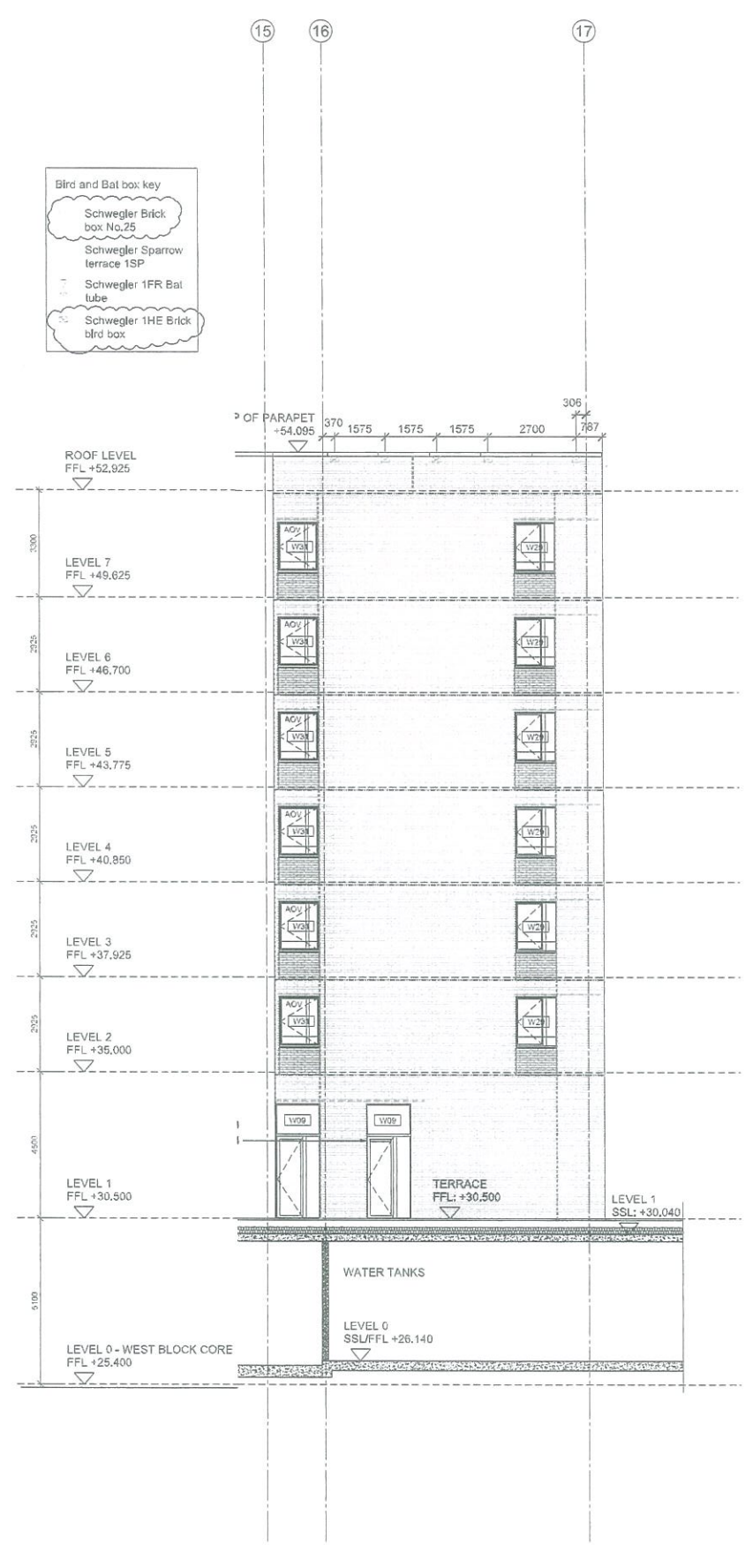
WINDOW COLOUR: RAL 7006

METALWORK COLOUR: RAL 8019

WINDOW BALUSTRADE TYPE: 6



1 SOUTH ELEVATION
1:100



2 SOUTH ELEVATION (TRUE ELEVATION)
1:100

date	rev	revision/author/checker
07.06.12	17	Bird and bal box types amended.
06.06.12	16	Bird and bal box locations and types added.
04.11.11	15	Brickwork reinforcement added; window W01 & W06 moved as cloudest.
21.10.11	14	Updated to suit client's comments: W31 & W36 moved as cloudest.
09.09.11	13	Finishes notes and movement joints updated; brick reinforcement added.
12.08.11	12	Finishes notes added.
11.07.11	11	Glazed Brick Module updated; Horizontal MJ's amended; Window references amended; Issued for Construction MSB
03.06.11	10	Terrace balustrade amended; Precast lintel height amended.
20.05.11	09	Movement joints added, AC; Spandrel panels omitted; glazed bricks added; Height of windows W20 & W22 reduced.
13.05.11	08	
27.04.11	07	For Comment
20.04.11	06	Amended to MLA comments dated 16.04.11.
05.04.11	05	Level access indicated to W09 & roof level omitted; AC/MB.
18.03.11	04	Windows are updated. Followed by MLA drawings - ML
11.03.11	03	Levels revised & true elevation added, AC.
04.03.11	02	Rollings revised; levels added and window references updated; AC.
21.01.11	01	Door setting out revised; Parapet level revised; Ground level and FFL updated to match PRP drawing S140, AC.
23.12.10	00	First Issue - DRAFT

purpose of issue
FOR CONSTRUCTION

project
KINGS CROSS CENTRAL
BLOCK R5

drawing
ELEVATION
WEST BLOCK
COURTYARD

drawing no AA0716C(20)E07	rev 17
drawn AJH	checked MB
scale @ A1 1:100	date Dec 2010

**FACADE TYPE 1
NORTH BLOCK**

FACING BRICK:
Freshfield Lane 'selected dark facings'

GLAZED BRICK:
Shoulder: St. Joris 'GR-31'

PRECAST CONCRETE:
Marble Mosaic 9.59.B (15% Grey/85% White)

SEALANT
Arbosil anthracite

MORTAR
Tarmac Y14 - grey

WINDOW COLOUR:
Level 1-7: RAL 6008
ground floor: RAL 8019

METALWORK COLOUR: RAL 8019

WINDOW BALUSTRADE TYPE 1

**FACADE TYPE 1
WEST BLOCK**

FACING BRICK:
Freshfield Lane 'selected dark facings'

GLAZED BRICK:
St. Joris '144 GF-10.4'

PRECAST CONCRETE:
Marble Mosaic 9.59.B (15% Grey/85% White)

SEALANT
Arbosil anthracite

MORTAR
Tarmac Y14 - grey

WINDOW COLOUR:
Levels 1-7: External RAL 3007
Internal RAL 7006

Ground floor: RAL 8019

METALWORK COLOUR: RAL 8019

JULIETTE BALUSTRADE TYPE 4
WINDOW BALUSTRADE TYPE 1A

ELEVATION KEY

- FRESHFIELD LANE 'SELECTED DARK FACINGS'
- IBSTOCK 'THROCKLEY SMOOTH GREY'
- IBSTOCK 'ALPINE GREY'
- ST. JORIS 'GR-31' - GLAZED
- ST. JORIS 'GR-48' - GLAZED
- ST. JORIS '144 GF - 10.4' - GLAZED

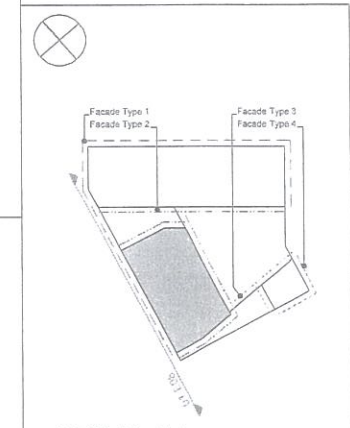
----- VERTICAL MOVEMENT JOINT
- - - - - HORIZONTAL MOVEMENT JOINT
- - - - - 3NO COURSES OF ANCON AIR

notes

- The contractor is responsible for checking dimensions, tolerances and references. Any discrepancy to be notified with the Architect before proceeding with the works.
- Where an item is covered by drawings to different scales the larger scale drawing is to be worked to.
- Do not scale drawing. Figure dimensions to be worked to in all cases.

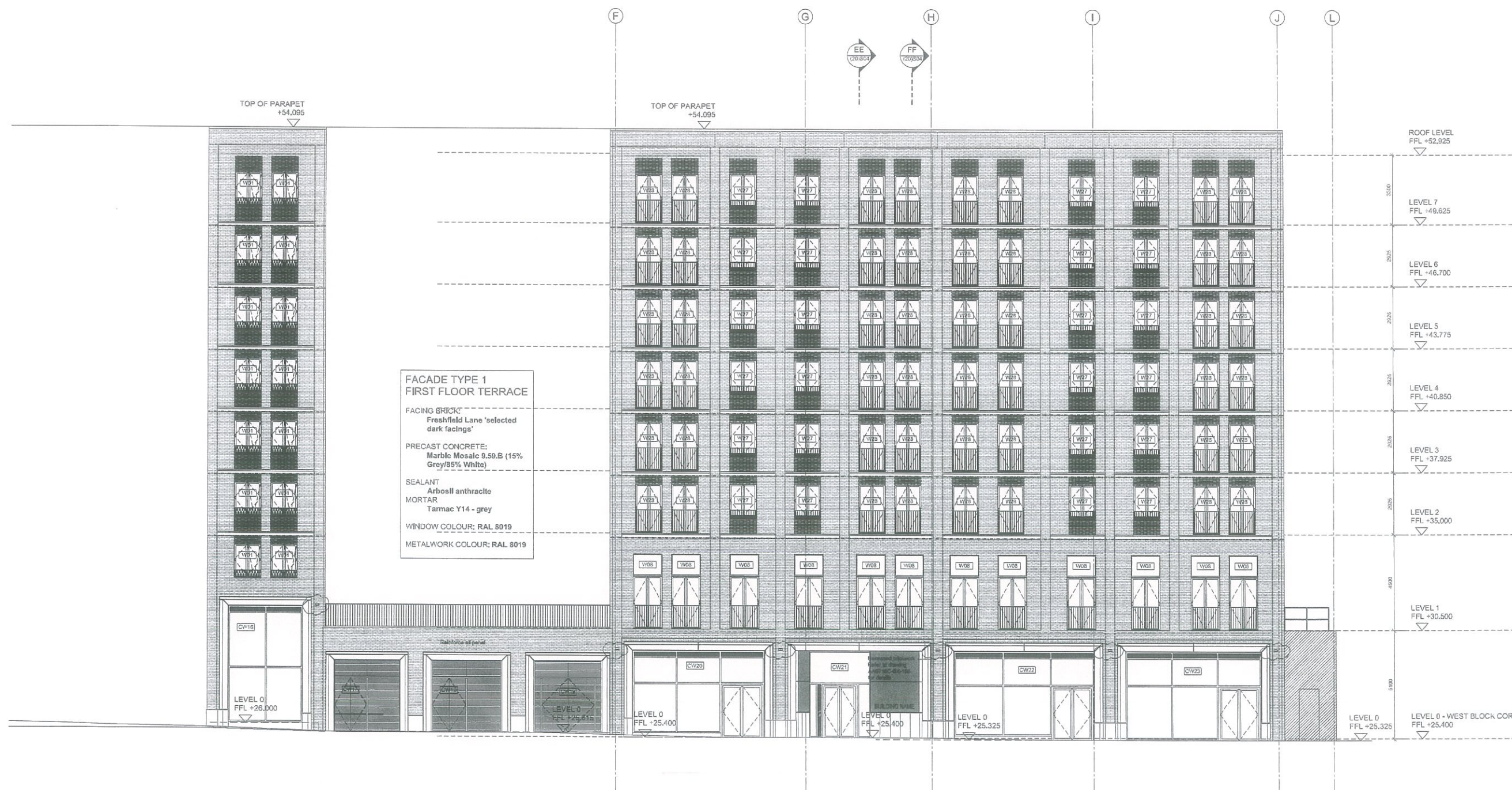
CDM Regulations 2007

ALL current drawings and specifications for the project must be read in conjunction with the Designer's Hazard and Environmental Assessment Report.



KEY PLAN

WALL REINFORCEMENT AND MOVEMENT JOINTS SHOWN AS ADVISED BY MASONRY CONSULTANT ON 05-09-2011



**FACADE TYPE 1
FIRST FLOOR TERRACE**

FACING BRICK:
Freshfield Lane 'selected dark facings'

PRECAST CONCRETE:
Marble Mosaic 9.59.B (15% Grey/85% White)

SEALANT
Arbosil anthracite

MORTAR
Tarmac Y14 - grey

WINDOW COLOUR: RAL 8019

METALWORK COLOUR: RAL 8019

date	rev	revision/author/checker
02.10.12	23	Wall mounted external lights added to building facade as per MIA mark-ups dated 05.12.11.
16.03.12	21	West Block entrance door height revised; video intercom integration added.
16.02.12	20	West block balustrade type amended from type 6 to type 1A.
01.02.12	19	Window colour corrected to show internal and external colour.
08.01.12	18	Precast clench to grid J amended and brickwork extended to ground level. Movement joint shown at first floor between piers removed. Movement joint to north block first floor removed.
04.11.11	17	Brickwork reinforcement added as detailed.
21.10.11	16	Updated to suit client's comments.
09.09.11	15	Finishes notes and movement joints updated; brick reinforcement added.
12.08.11	14	Finishes notes added.
11.07.11	13	Glazed Brick Module updated. Horizontal MJs amended. WHV vents added. Precast frames between 1B & 1B amended. Window references amended. Issued for Construction MSB.
21.06.11	12	Balustrade type amended.
10.06.11	11	Ground floor fenestration and M1 revised. AC.
05.06.11	10	Curtain wall transoms lowered. Louvre panels shown to top of curtainwall. Movement joints added. AC.
26.05.11	09	Spandrel panels omitted, glazed bricks added. Height of windows W01 reduces.
13.05.11	08	For Comment
27.04.11	07	Amended to MIA comments dated 18.04.11. Sub Station door revised.
26.04.11	06	Pattern to precast concrete added & roof level omitted. ACMB.
08.04.11	05	Windows are updated, followed by MIA drawings. ML
18.03.11	04	Brickwork above CW20-CW24 revised. AC.
11.03.11	03	Ground floor curtain walling updated & level revised. Fallings revised. AC.
04.03.11	02	Windows and doors scheduled. Window setting out revised. Parapet level revised. Ground level and FFL updated to match PRP drawing SK10, AC.
21.01.11	01	First Issue - DRAFT
23.12.10	00	First Issue - DRAFT

purpose of issue
FOR CONSTRUCTION

project
KINGS CROSS CENTRAL BLOCK R5

drawing
ELEVATION WEST BLOCK CUBITT PASSAGE

drawing no	AA0716C(20)E08	rev	22
drawn	AJH	checked	MB
scale @ A1	1:100	date	Dec 2010

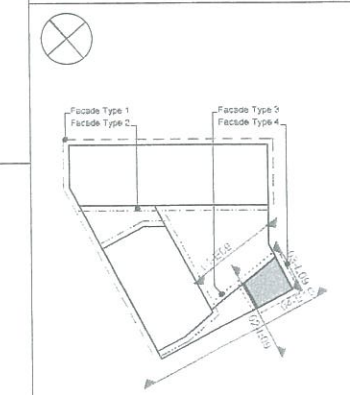
1 WEST ELEVATION
1:100

notes

- The contractor is responsible for checking dimensions, tolerances and references. Any discrepancy is to be notified via the Architect before proceeding with the works.
- Where an item is covered by drawings to different scales the larger scale drawing is to be worked to.
- Do not scale drawing. Figured dimensions to be worked to in all cases.

CDM Regulations 2007

All current drawings and specifications for the project must be read in conjunction with the Designer's Hazard and Environmental Assessment Record.



KEY PLAN

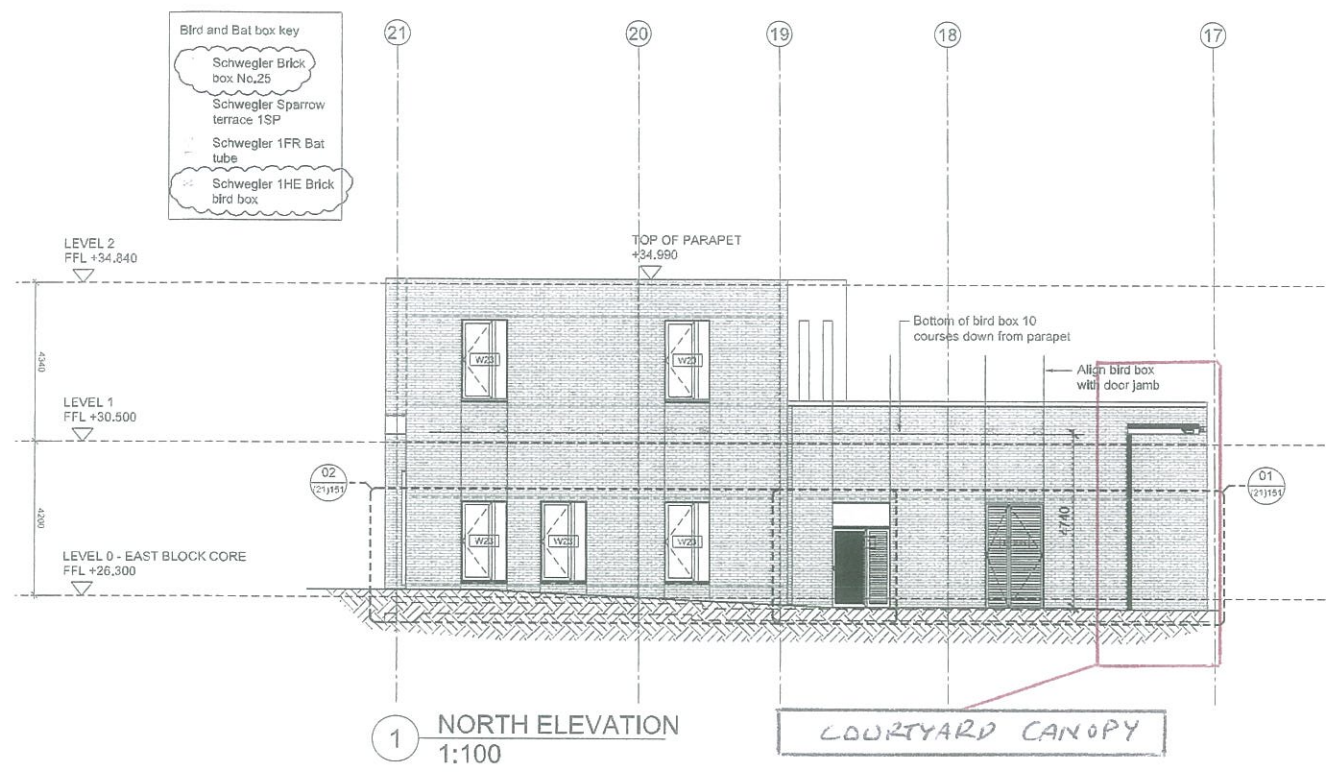
WALL REINFORCEMENT AND MOVEMENT JOINTS SHOWN AS ADVISED BY MASONRY CONSULTANT ON 05-09-2011

ELEVATION KEY

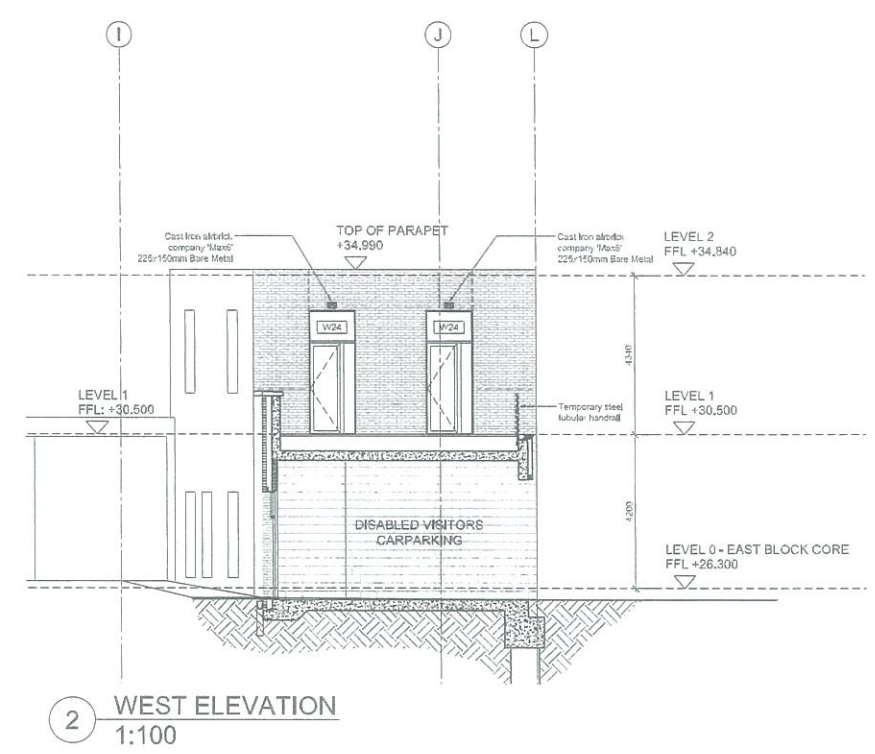
- FRESHFIELD LANE 'SELECTED DARK FACINGS'
- VERTICAL MOVEMENT JOINT
- HORIZONTAL MOVEMENT JOINT
- SND COURSES OF ANCON AMR

FACADE TYPE 1 EAST BLOCK

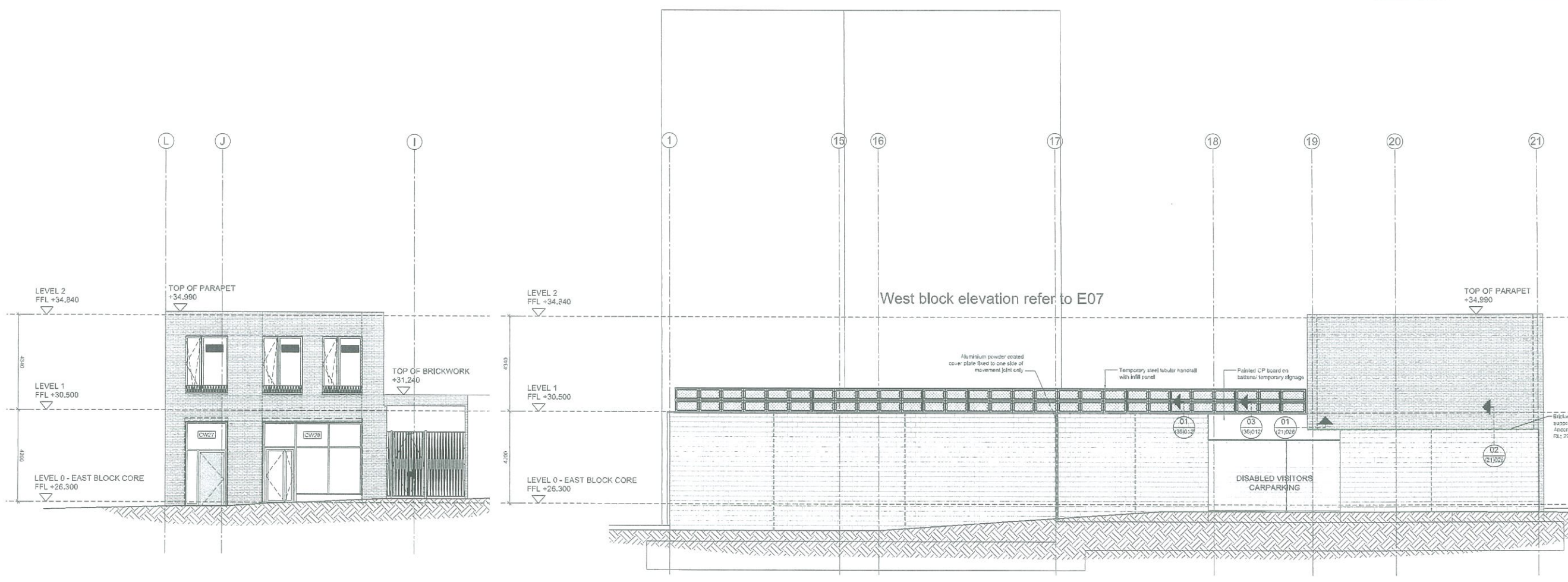
- FACING BRICK: Freshfield Lane 'selected dark facings'
- PRECAST CONCRETE: Marble Mosaic 9.59.B (15% Grey/85% White)
- SEALANT: Arbosil Anthracite
- MORTAR: Tarmac Y14 - grey
- WINDOW COLOUR: External: North & West Elevations: RAL 7006 East Elevation: Windows: RAL 6005 Internal: RAL 7006 Curtain walls: RAL 8019
- METALWORK COLOUR: RAL 8019
- WINDOW BALUSTRADE TYPE 5 (W26 - East Elevation) TYPE 5A (W25 - East Elevation)



1 NORTH ELEVATION 1:100



2 WEST ELEVATION 1:100



3 EAST ELEVATION 1:100

4 SOUTH ELEVATION 1:100

date	rev	revision/author/checker
07.06.12	18	Bird box types amended.
06.09.12	17	Bird box locations and types added.
17.07.12	16	Movement joints amended as advised.
23.03.12	15	Window W25, W26 balustrade revised, key updated.
10.03.12	14	West elevation cast iron airbricks repositioned.
01.02.12	13	Temporary balcony revised: detail references added to south elevation
30.01.12	12	Cast iron airbricks added to west elevation of east block.
04.11.11	11	Details references added, IJJ revised as closed.
21.10.11	10	Updated to suit client's comments
06.09.11	09	Finishes notes and movement joints updated: brick reinforcement added; window heights changed; brick recess added as closed.
12.02.11	08	Finishes notes added, east street gate revised
11.07.11	07	Vertical MJs added, Temporary Fire Escape stair added, issued for Construction MSB
21.06.11	06	For Comment
27.04.11	05	For Comment
30.04.11	04	Amended to MLA comments dated 18.04.11.
08.04.11	03	Level access indicated to East Elevation, AC14B.
25.03.11	02	Extent of revised canopy updated, Canopy removed from this elevation, AH.
21.03.11	01	Balcony rail added ML

purpose of issue FOR CONSTRUCTION

project KINGS CROSS CENTRAL BLOCK R5

drawing ELEVATION EAST BLOCK

drawing no AA0716C(20)E09 rev 18

drawn ML checked MB scale @ A1 1:100 date Mar 2011

