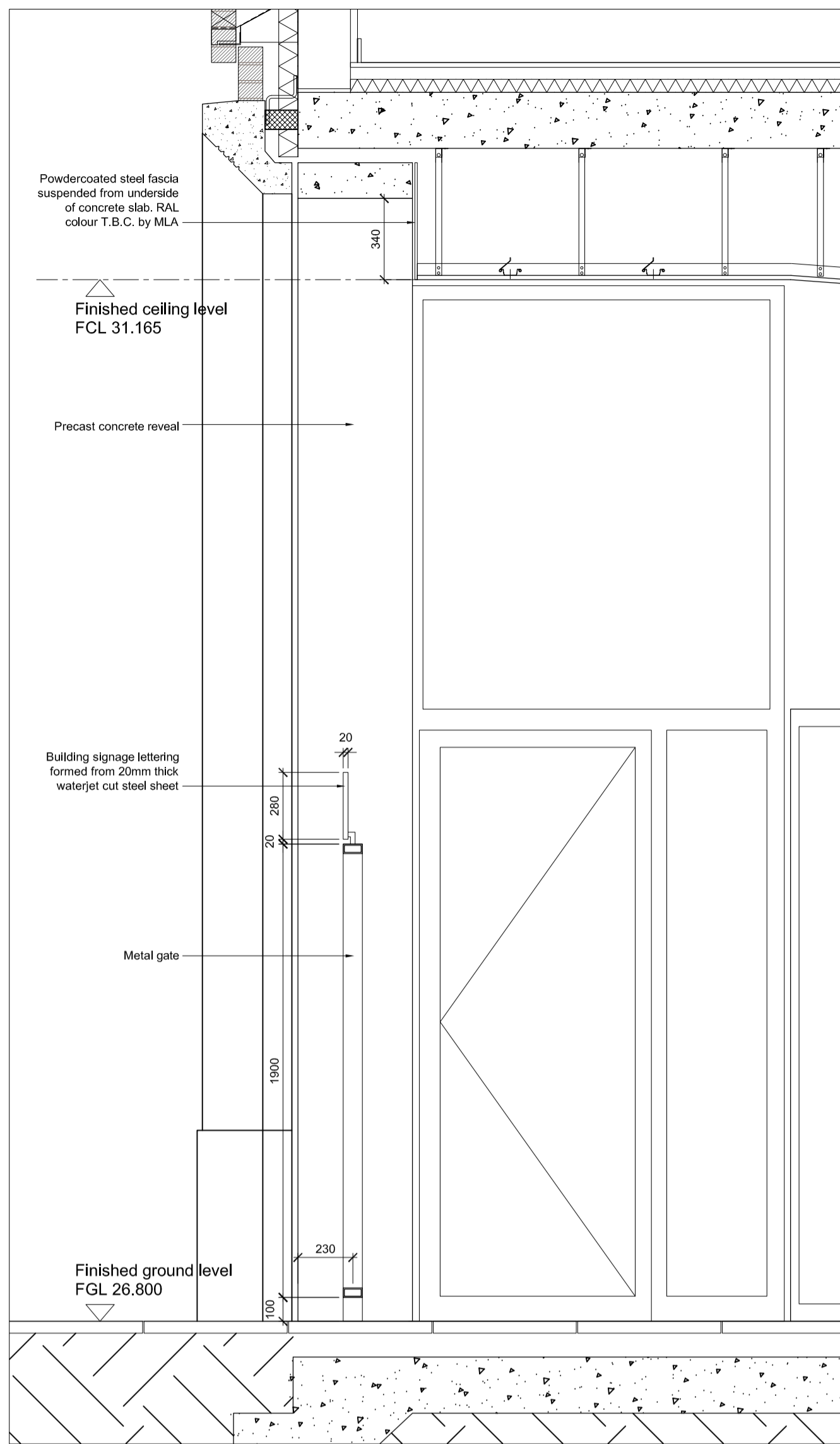
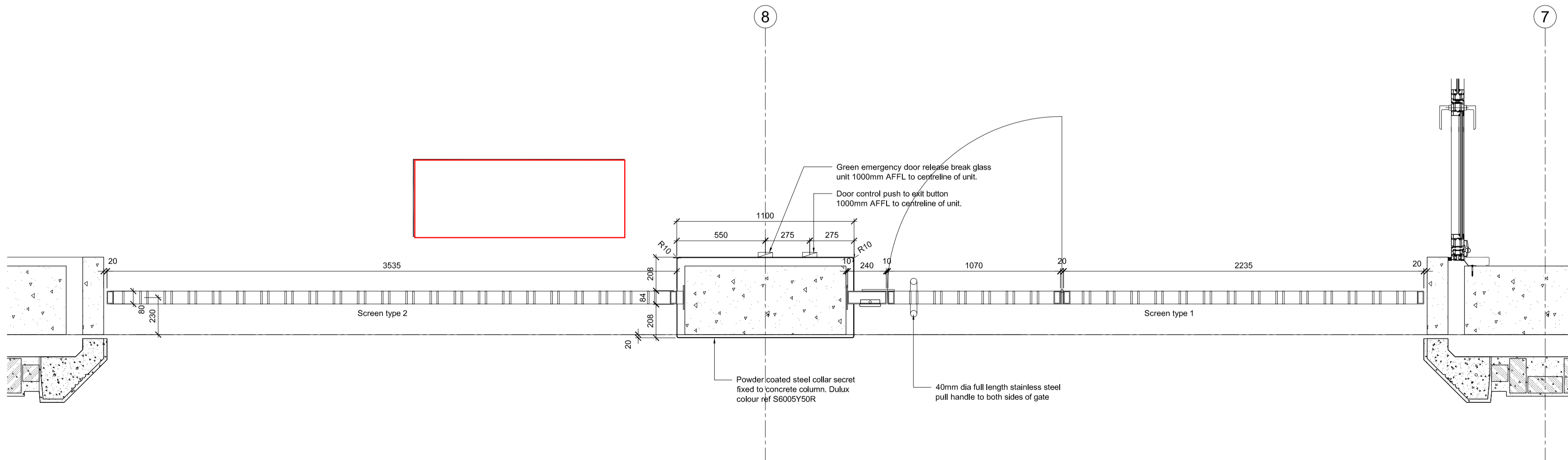


1 Elevation of screens 1 and 2  
Scale: 1:20



3 Typical section of screens 1 and 2  
Scale: 1:20



2 Plan of screens 1 and 2  
Scale: 1:20

#### notes

- The contractor is responsible for checking dimensions, tolerances and references. Any discrepancy to be verified with the Architect before proceeding with the works.
- Where an item is covered by drawings to different scales the larger scale drawing is to be worked to.
- Do not scale drawing. Figured dimensions to be worked to in all cases.

#### CDM Regulations 2007

ALL current drawings and specifications for the project must be read in conjunction with the Designer's Hazard and Environmental Assessment Record.

#### NOTE

This drawing to be read in conjunction with:  
- Drawing series (21) for external wall,  
- Precast concrete and window/door details  
- Sub-contractor's drawings for brick supports and details  
- Wintech specification  
- NBS specification

All metal to be PPC on galvanised steel colour RAL 8019.  
Fixing and supporting to be confirmed by subcontractor/engineer to ensure compliance to regulations and stability.  
All ground floor courtyard gate subject to SBD assessment

GATE/SCREEN ON  
NORTH BLOCK  
NORTH ELEVATION

FOR SCOPE PLEASE REFER TO  
ELEVATION DRAWINGS: (20)E01

28.09.12	04	Amended as per Contractor's direction CD No. 0010/023 dated 06.08.12 and attached MLA sketch drawings.
12.09.12	03	Issued for construction. Amended as per Contractor's direction 4500/010 in line with MLA's comments and sketches.
12.08.11	02	Updated to suit Carillon comments on 08.08.11
05.08.11	01	General notes updated
03.08.11	00	First Issue - DRAFT
date	rev	revision/author/checker

#### purpose of issue FOR CONSTRUCTION

project  
**KINGS CROSS CENTRAL  
BLOCK R5**  
drawing  
**METALWORK DETAILS  
SCREEN GATE TYPE 1 & 2  
YORK WAY**

drawing no	rev
AA0716C(39)010	04
drawn	checked
RH	MB
scale @ A1	date
1:20	Aug 2011

PRP Architects ©  
10 Lindsey Street  
London  
EC1A 9HP  
T +44 (0)20 7653 1200  
F +44 (0)20 7653 1201  
ton.prp@prparchitects.co.uk

