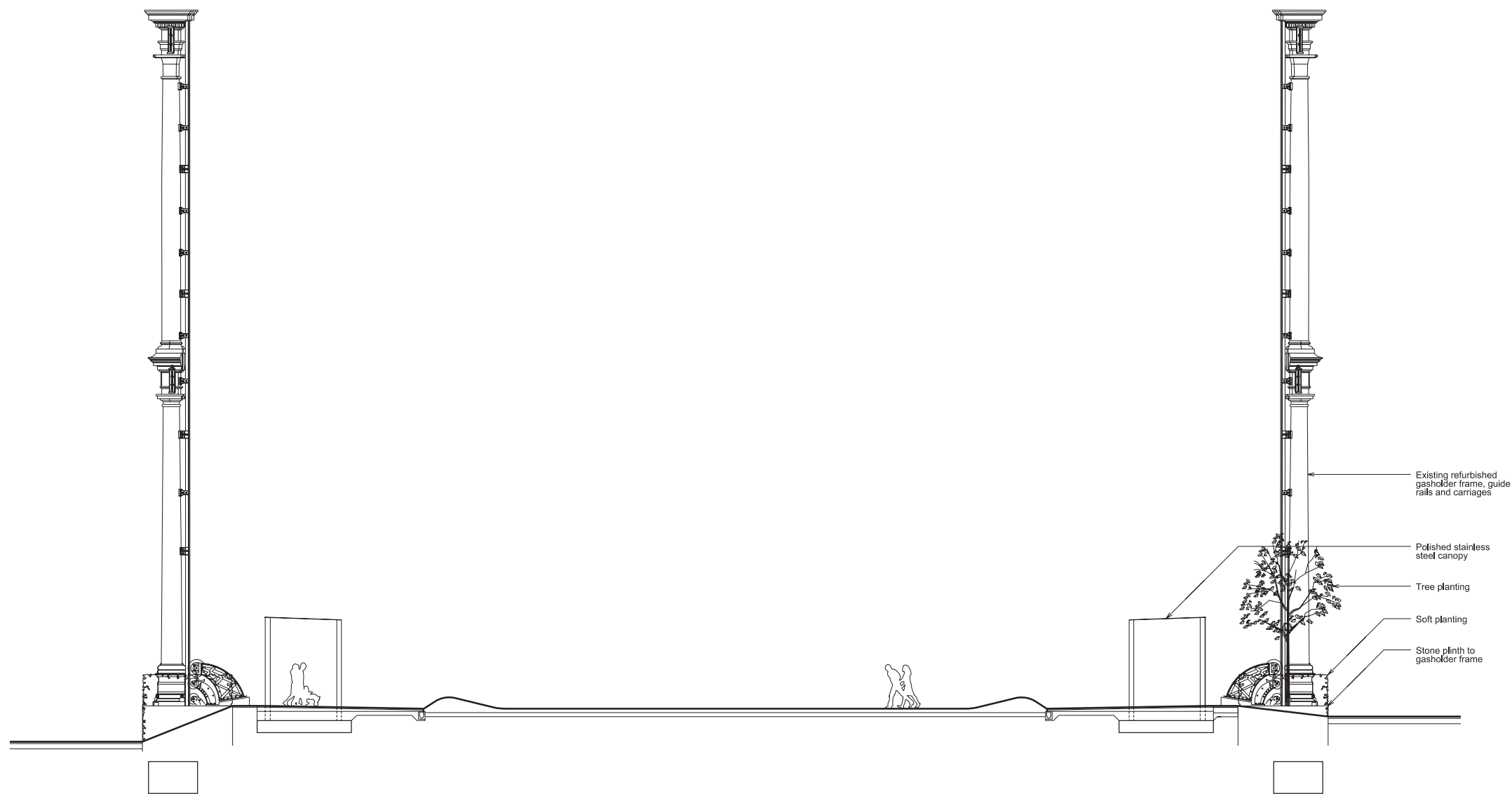


Job	Drawing No.	Rev.
0286	P 1104	
No.	Revisions	Date



NOTE:
LANDSCAPING/CANOPY FEATURES
SHOWN FOR CONTEXT ONLY, ARE
INDICATIVE AND DO NOT FORM PART
OF THIS APPLICATION

0 1 5m

BPA
BELL PHILLIPS ARCHITECTS

Block K
175 Bermondsey Street
London SE1 3UW

T 020 7234 9330
E info@bellphillips.com
W www.bellphillips.com

Copyright

This drawing is the property of
Bell Phillips architects. No
disclosure or copy of it may be
made without the written
permission of Bell Phillips
architects

Project

GASHOLDER NO.8
KINGS CROSS CENTRAL

Keyplan



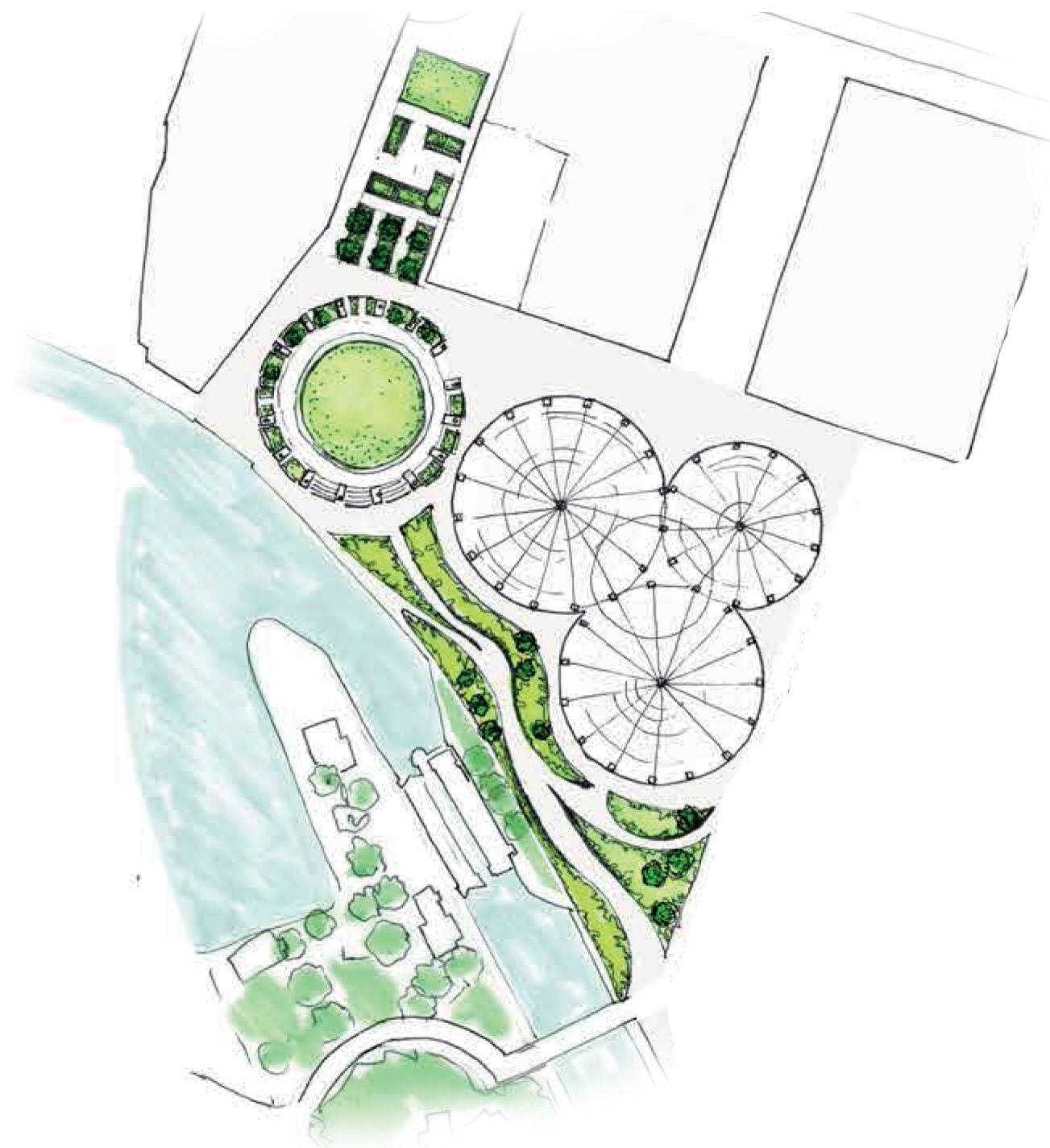
Title

INDICATIVE SECTION AA

Job	Drawing No.	Rev.	
0286	P 1104	-	
Drawn	Scales at A1	Scales at A3	Date
HP	1:100	1:200	10/12

Appendix E

Indicative Gasholder Park Landscaping -
Illustrative, for information



FOR INFORMATION
King's Cross Central - Indicative Gasholder Park Landscaping



Appendix F

Letter from lawyers Hogan Lovells International LLP confirming the contract for re-erection has been placed

Hogan
Lovells

Hogan Lovells International LLP
Atlantic House
Holborn Viaduct
London EC1A 2FG
T +44 20 7296 2000
F +44 20 7296 2001
www.hoganlovells.com

16 October 2012

Development Control
Planning Services
London Borough of Camden
Town Hall
Argyle Street
London WC1H 8ND

Your ref	Application Reference
	2004/2321/C and 2011/1526/P
Our ref	F6/GBT/2741059
Matter ref	Y0724/00031

For the attention of Rob Willis

Dear Sirs

CONSERVATION AREA CONSENT GRANTED SUBJECT TO A SECTION 106 LEGAL AGREEMENT
ADDRESS: KING'S CROSS CENTRAL, WESTERN GOODS SHED, WHARF ROAD, KING'S CROSS, LONDON
REFERENCE : 2004/2321/C AS VARIED BY DECISION 2011/1526/P

We refer to clause 23 of the Section 106 Agreement dated 22 December 2006. We also refer to condition 2(c) of the Conservation Area Consent referred to above.

We act for Argent (King's Cross) Limited and King's Cross Central Limited Partnership in connection with certain construction works to be undertaken by King's Cross Central Limited Partnership at the above site. For the purposes of clause 23.2 of the Section 106 Agreement, we confirm, as solicitors for Argent (King's Cross) Limited and King's Cross Central Limited Partnership that a contract referred to in condition 2(c) of the Conservation Area Consent for the works of dismantling, refurbishment and re-erection of Gas Holder Number 8 guide frame has been placed.

We certify that such contract:

1. is based on the industry standard form JCT Design and Build Contract 2011 with certain agreed bespoke amendments;
2. save for the provisions contained in the JCT standard form, does not contain conditions such as would prevent the carrying out of the relevant works;
3. save for the provisions contained in the JCT standard form, does not contain conditions which would allow the contract to be terminated other than in the case of the non-performance by the appointed contractor; and
4. to the best of the knowledge and belief of Gillian Thomas, is entered into by the King's Cross Central Limited Partnership (whom we also represent) in good faith with the objective of securing the performance of the specified work.

Should you have any questions in connection with this letter, please contact Gillian Thomas at the above address.

Yours faithfully

Hogan Lovells International LLP

Hogan Lovells International LLP is a limited liability partnership registered in England and Wales with registered number OC323639 and is authorised and regulated by the Solicitors Regulation Authority of England and Wales. Registered office and principal place of business: Atlantic House, Holborn Viaduct, London EC1A 2FG.

"Hogan Lovells" is an international legal practice that includes Hogan Lovells International LLP and Hogan Lovells US LLP, with offices in: Abu Dhabi Alicante Amsterdam Baltimore Beijing Berlin Brussels Caracas Colorado Springs Denver Dubai Dusseldorf Frankfurt Hamburg Hanoi Ho Chi Minh City Hong Kong Houston London Los Angeles Madrid Miami Milan Moscow Munich New York Northern Virginia Paris Philadelphia Prague Rome San Francisco Shanghai Silicon Valley Singapore Tokyo Ulaanbaatar Warsaw Washington DC Associated Offices: Budapest Jakarta Jeddah Riyadh Zagreb.

The word "partner" is used to describe a partner or member of Hogan Lovells International LLP, Hogan Lovells US LLP or any of their affiliated entities or any employee or consultant with equivalent standing. Certain individuals, who are designated as partners, but who are not members of Hogan Lovells International LLP, do not hold qualifications equivalent to members. For more information about Hogan Lovells, the partners and their qualifications, see www.hoganlovells.com.



