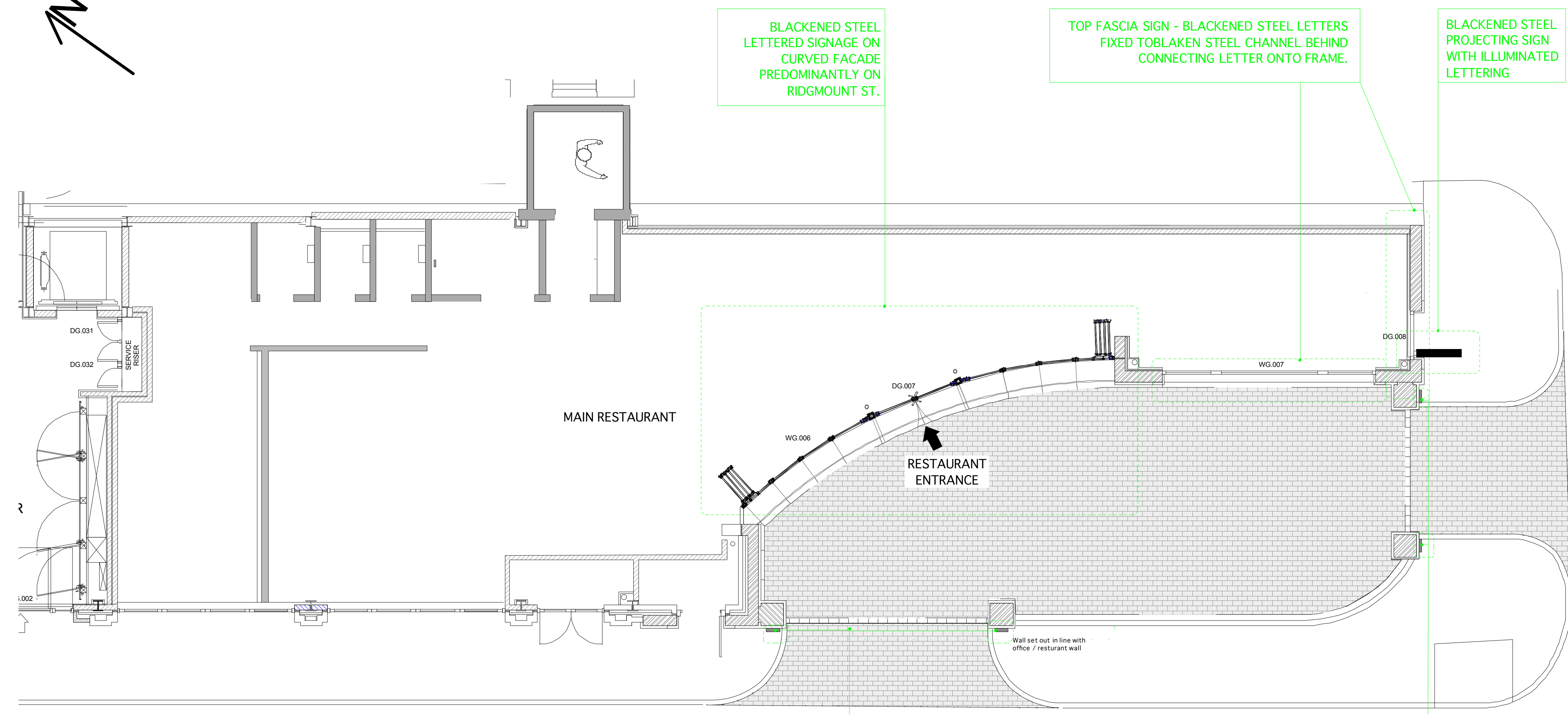
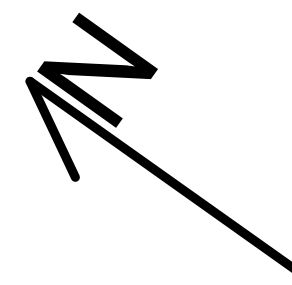


AREA OF PROPOSED BYRON SHOPFRONT
1:1000 @ A1



BLACKENED STEEL LETTERED SIGNAGE ON CURVED FACADE PREDOMINANTLY ON RIDGEMOUNT ST.

TOP FASCIA SIGN - BLACKENED STEEL LETTERS FIXED TO BLACKENED STEEL CHANNEL BEHIND CONNECTING LETTER ONTO FRAME.

BLACKENED STEEL PROJECTING SIGN WITH ILLUMINATED LETTERING

2No. INTERNALLY ILLUMINATED MENU BOXES-A4 PORTRAIT

2No. INTERNALLY ILLUMINATED MENU BOXES-A4 PORTRAIT

REVISIONS	
17.10.12	MENU BOXES + BLACKENED STEEL + PROJECTING SIGN

Michaelis Boyd Associates Ltd
108 Palace Gardens Terrace London W8 4RT
t +44(0)20 7221 1237 f +44(0)20 7221 0130
michaelisboyd.com

Client: BYRON
Date Created: 22.08.12

Project: STORE STREET

Drawing Title: PROPOSED SIGNAGE PLAN

Scale: 1:50 @ A1
Revision Date: 17.10.12

Drawing No: 11091 / 374
Drawn By:
Checked by:
Revision: A

DO NOT SCALE FROM DRAWING, ALL DIMS TO BE CHECKED ON SITE. REPORT OMISSIONS AND DISCREPANCIES TO THE ARCHITECT IMMEDIATELY

PROPOSED SIGNAGE PLAN

KEY PLAN @ 1:50

