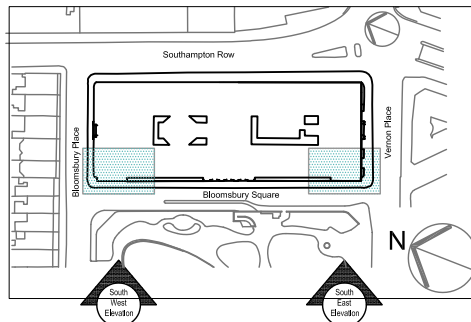


South West Elevation (Scale 1:50)



Location Plan (scale 1:1250)

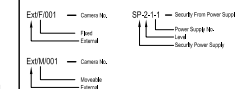


South East Elevation (Scale 1:50)

- NOTES:
1. All Dimensions given in mm
 2. This drawing is for planning only, not for construction
 3. This drawing is copyright and may not be altered, traced, copied, photographed or used for any purpose other than that for which it is issued without written permission from Global Fire & Security Ltd

This Drawing References:	
Type:	Org. No:
Architect (Alsop)	0770/01/424 Rev C4 Issued 13-11-02
Architect (Alsop)	0770/01/423 Rev C4 Issued 24-09-02
Architect (Alsop)	0770/01/422 Rev C5 issued 13-11-02
Architect (Alsop)	0770/01/421 Rev C5 Issued 24-09-02

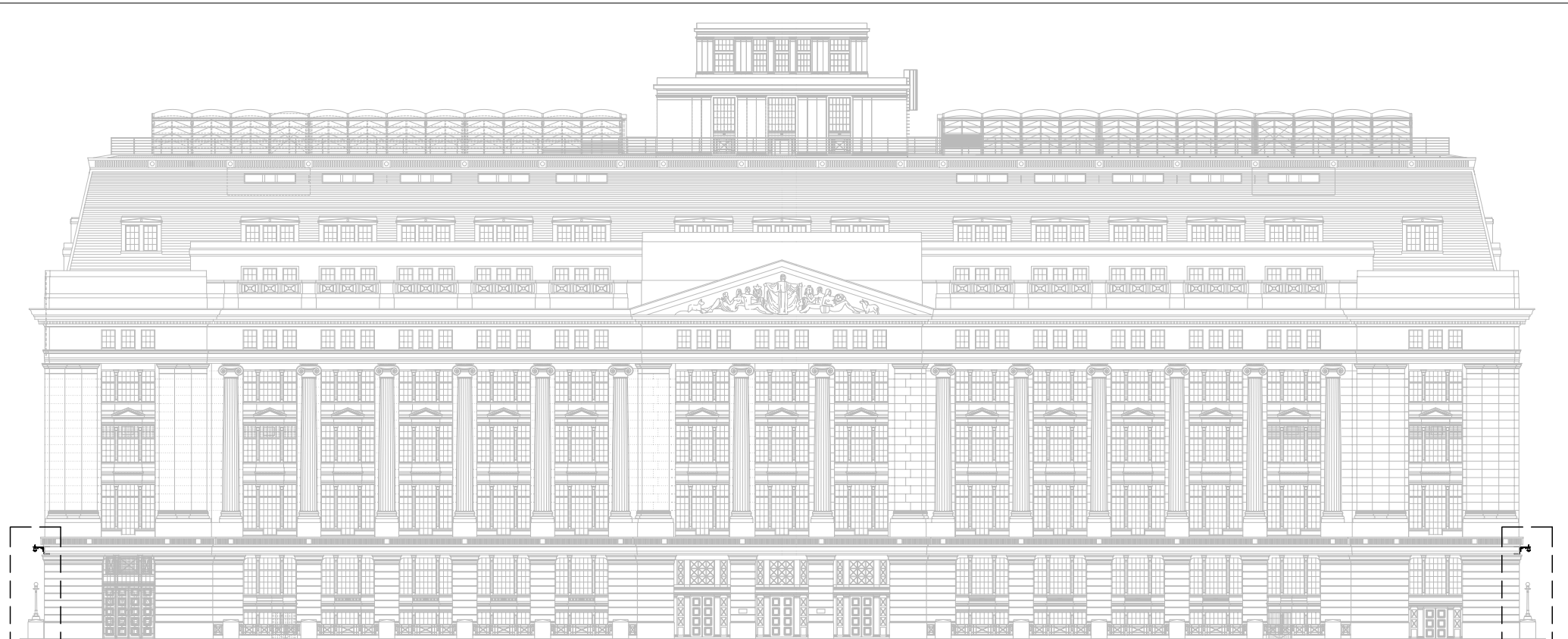
Numbering/Circuit Convention:



Rev	Description	Approved	No.	Date
01	Preliminary Issue	-	-	23-07-12
02	Comments Incorporated & re-issued for approval	-	-	19-09-12


Global Fire & Security Ltd
19 Napier Road
Bromley, Kent, UK
BR2 9JA
TEL: +44 (0) 208 313 3336
FAX: +44 (0) 208 313 3339
© Copyright 2007
Web: www.globalfiresecurity.com
E-mail: sales@gfs-group.co.uk

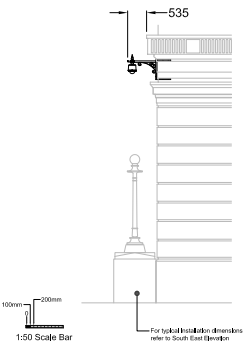
Project Title: Victoria House Southampton Row London WC1B 4BA	
Drawing Title: Exterior CCTV Layout Ground Floor (Proposed Services) Sheet 2 of 7	
Drawn by: GFS (FMC)	Scale: as indicated @A1
Checked by: GFS (AG)	Version: Planning
Approved by: -	Date: July 2012
Print name: -	Drawing No: GFS-VICH-LEVEL 00-002 Rev 02



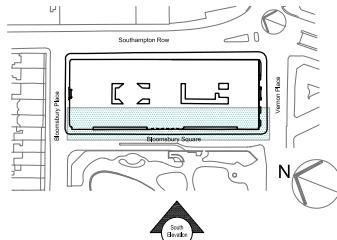
South Elevation (Scale 1:100)

Refer to South West Inset
for enlargement

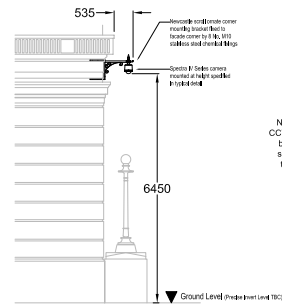
Refer to South East Inset
for enlargement



South West Elevation (Scale 1:50)



Location Plan (scale 1:1250)



South East Elevation (Scale 1:50)

Note: For specific data on
CCTV cameras and mounting
bracket refer to technical
submittals accompanying
these drawings (typical)



1:50 Scale Bar

Rev	Description	Approved	No.	Date
01	Preliminary Issue	-	-	03-09-12
02	Comments Incorporated & Approved for approval	-	-	10-09-12

This Drawing References		This Drawing References	
Type:	Dwg. No.	Type:	Dwg. No.
Architect	0770/01/424 Rev C4 Issued 13-1-102	Architect	0770/01/421 Rev C5 Issued 24-09-02
Architect	0770/01/423 Rev C4 Issued 24-09-02	Architect	0770/01/422 Rev C3 Issued 13-1-102
Architect	0770/01/423 Rev C3 Issued 13-1-102	Architect	0770/01/423 Rev C3 Issued 13-1-102

NOTES

- All Dimensions given in mm
- This drawing is for planning only, not for construction
- This drawing is copyright and may not be altered, traced, copied, photographed or used for any purpose other than that for which it is issued without written permission from Global Fire & Security Ltd

Numbering/Circuit Convention

EX/F1001 - Camera -> SPQ-2-1 - Security Front Panel Switch

EX/F1001 - Camera -> SPQ-2-1 - Security Front Panel Switch

EX/F1001 - Camera -> SPQ-2-1 - Security Front Panel Switch

Global Fire & Security Ltd

19 Hagley Road

Birmingham, B15 2TA, UK

TEL: +44 (0) 208 313 3336

FAX: +44 (0) 208 313 3339

Web: www.globalfiresecurity.com

Email: sales@globalfiresecurity.com

Project Title: Victoria House

Southampton Row

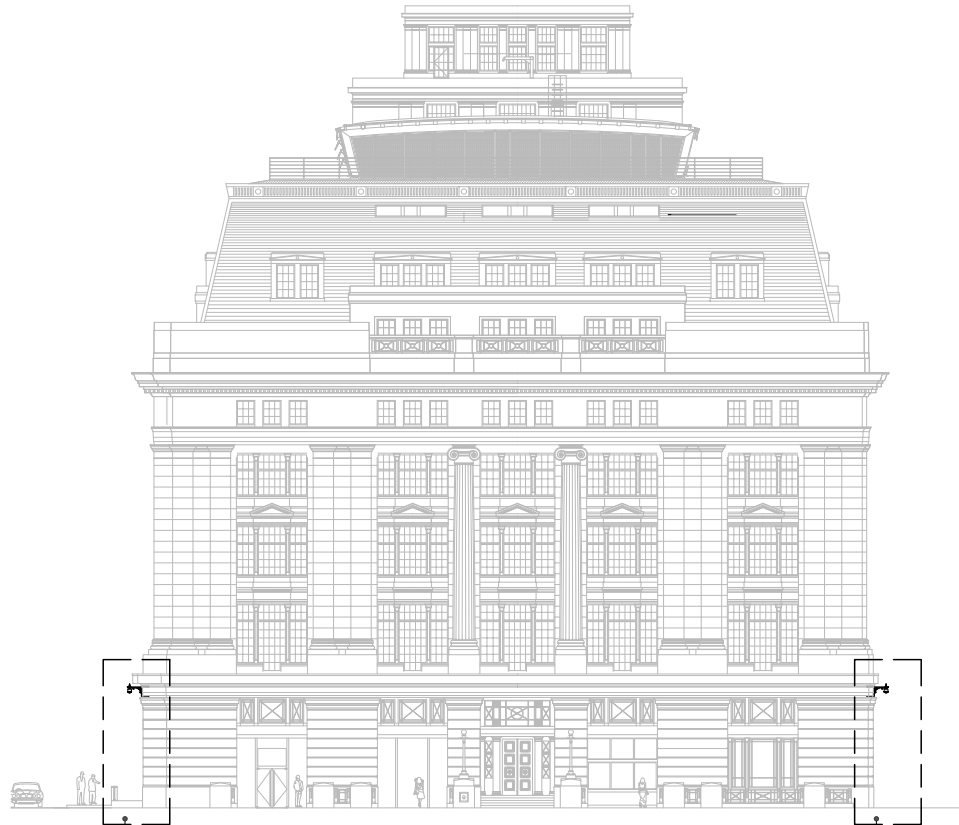
London WC1B 4BA

Drawing Title: Exterior CCTV Layout

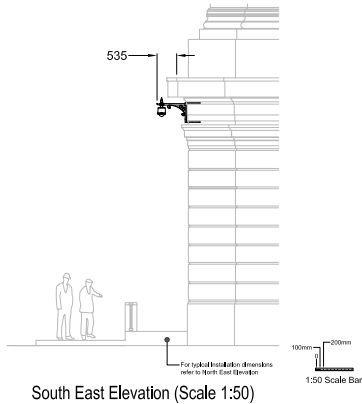
Ground Floor (Proposed Services)

Sheet 4 of 7

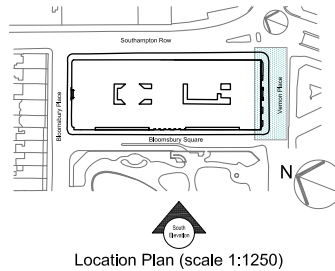
Drawn by: GFS (PNC)	Scale: as indicated @A0
Checked by: GFS (AG)	Version: Planning
Approved by: -	Date: September 2012
Drawing No: GFS-VICH-LEVEL 00-004 Rev 01	



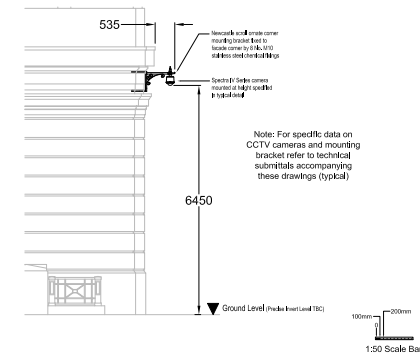
East Elevation (Scale 1:100)



South East Elevation (Scale 1:50)



Location Plan (scale 1:1250)



North East Elevation (Scale 1:50)

- NOTES:
1. All Dimensions given in mm
 2. This drawing is for planning only, not for construction
 3. This drawing is copyright and may not be altered, traced, copied, photographed or used for any purpose other than that for which it is issued without written permission from Global Fire & Security Ltd

This Drawing References:	
Type:	DRG, SEC
Architect (A/dep)	0770/051424 Rev C4 Issued 13-11-12
Architect (A/dep)	0770/051423 Rev C4 Issued 24-09-12
Architect (A/dep)	0770/051423 Rev C5 Issued 13-11-12
Architect (A/dep)	0770/051421 Rev C5 Issued 24-09-12
Architect (A/dep)	0770/051425 Rev B/C Issued 13-08-12
Architect (A/dep)	0770/051426 Rev B/C Issued 12-08-12

Number/Draft Convention	
EUP001	Comments
EUP002	Comments
EUP003	Comments

Rev	Description	Approved	No.	Date
01	Preliminary Issue	-	-	29-08-12
02	Comments Incorporated & re-submitted for approval	-	-	13-09-12

Global Fire & Security
Your input... your future

Global Fire & Security Ltd
19 Napier Road
Bromley, Kent, UK
BR2 9JA
TEL: +44 (0) 208 313 3336
FAX: +44 (0) 208 313 3339
Email: sales@globalfiresecurity.com

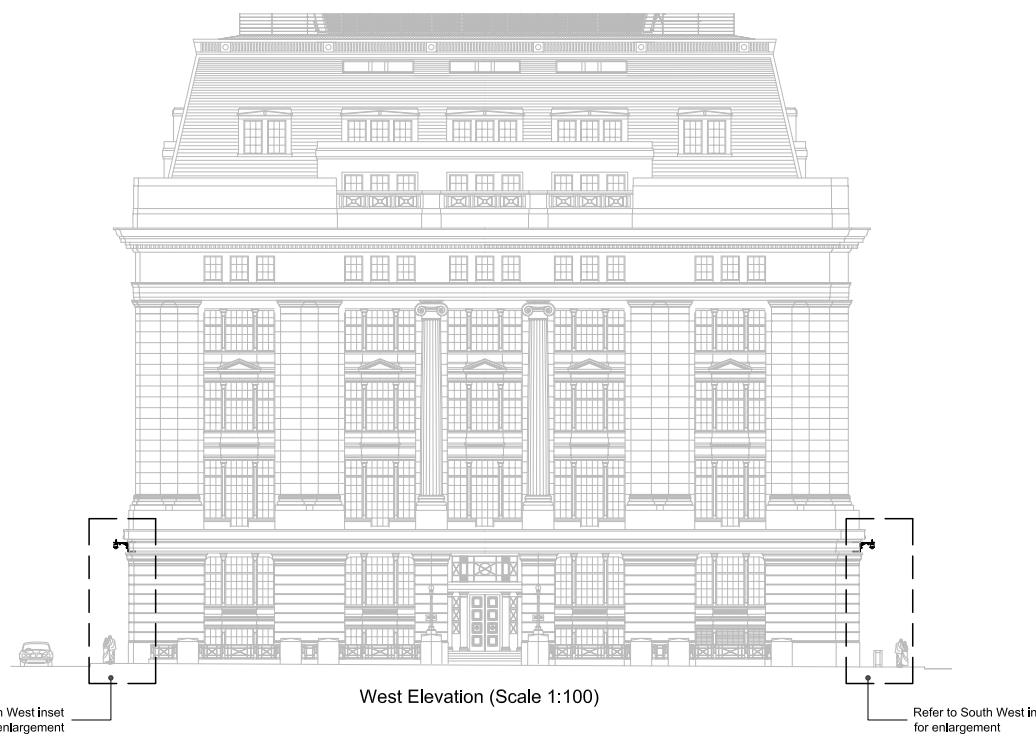
Project Name: Victoria House
Southampton Row
London WC1B 4BA

Drawing Title: Exterior CCTV Layout
Ground Floor
Sheet 5 of 6

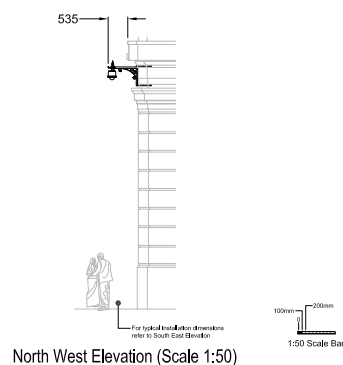
Drawn by: GFS (FMC)
Checked by: GFS (AG)
Approved by: -
Print name: -

Scale: as indicated @A0
Version: Planning
Date: August 2012

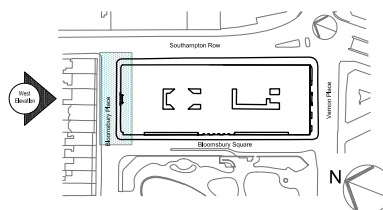
Drawing No: GFS-VICH-LEVEL-00-005 Rev 02



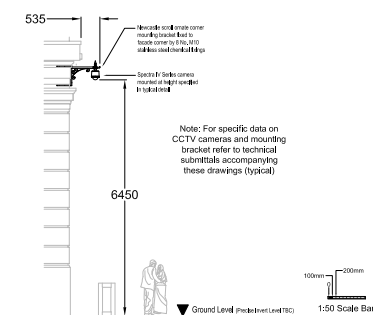
West Elevation (Scale 1:100)



North West Elevation (Scale 1:50)



Location Plan (scale 1:1250)



South West Elevation (Scale 1:50)

- NOTES:
1. All Dimensions given in mm
 2. This drawing is for planning only, not for construction
 3. This drawing is copyright and may not be altered, traced, copied, photographed or used for any purpose other than that for which it is issued without written permission from Global Fire & Security Ltd

This Drawing References:	
Type:	Orig. Ver.
Architect (Risp):	077601426 Rev C4 Issued 12-11-12
Architect (Risp):	077601422 Rev C4 Issued 24-09-12
Architect (Risp):	077601422 Rev C3 Issued 12-11-12
Architect (Risp):	077601421 Rev C3 Issued 24-09-12
Architect (Risp):	077601426 Rev Bc Issued 12-08-12
Architect (Risp):	077601426 Rev Bc Issued 12-08-12

Numbering Convention:	
EW001	→ Corner, 53500 = height from floor
EW001	→ Corner, 53500 = height from floor
EW001	→ Corner, 53500 = height from floor

Rev	Description	Appr	Rev	Date
01	Preliminary Issue	-	-	12-08-12
02	Comments Incorporated & Issued for approval	-	-	12-09-12

Global Fire & Security
We protect your future

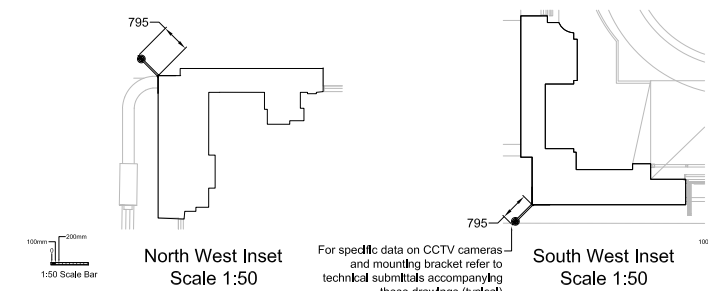
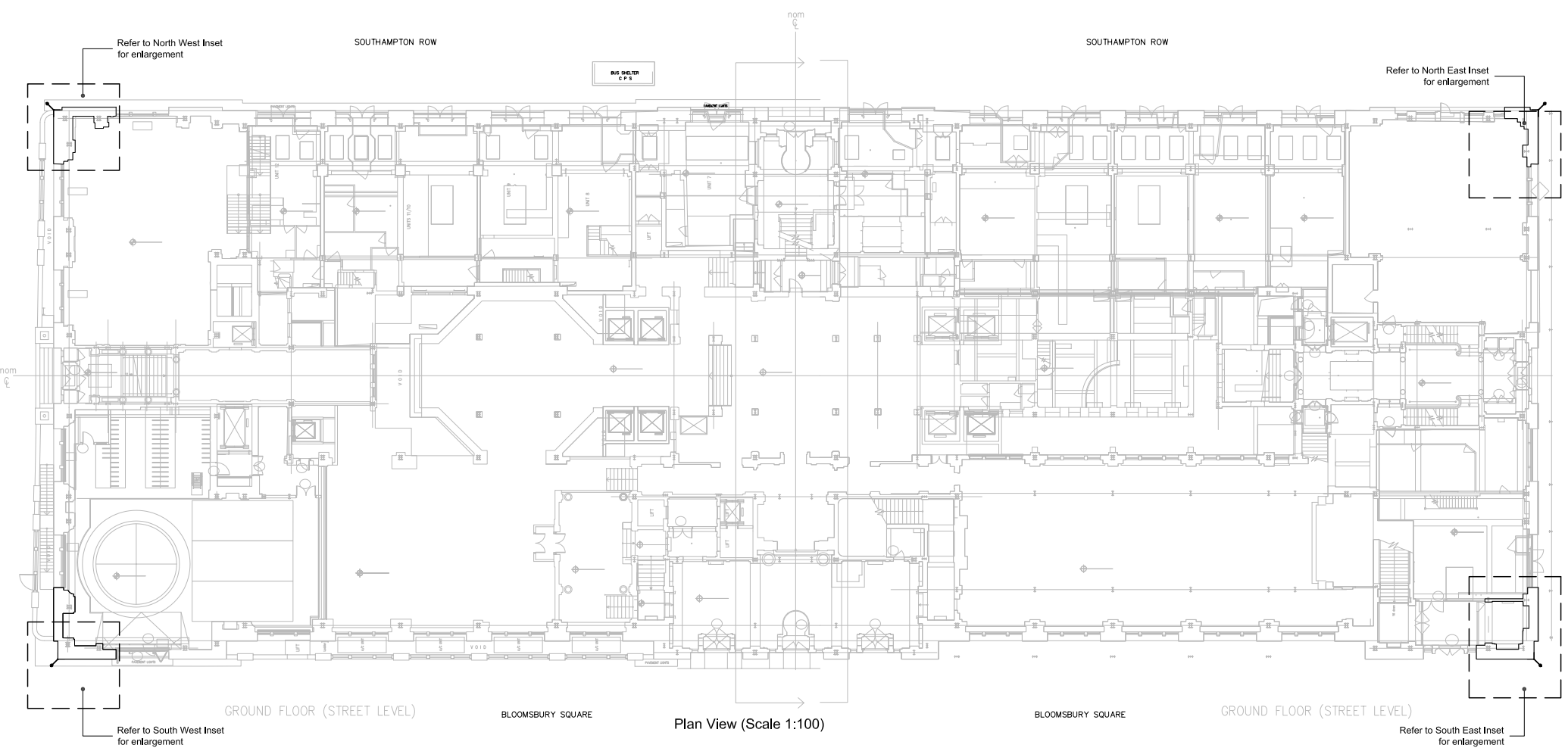
Global Fire & Security Ltd
19 Napier Road
Brentford, Kent, UK
BR2 9XA
TEL: +44 (0) 208 313 3336
FAX: +44 (0) 208 313 3339

Project Name: Victoria House
Southampton Row
London WC1B 4BA

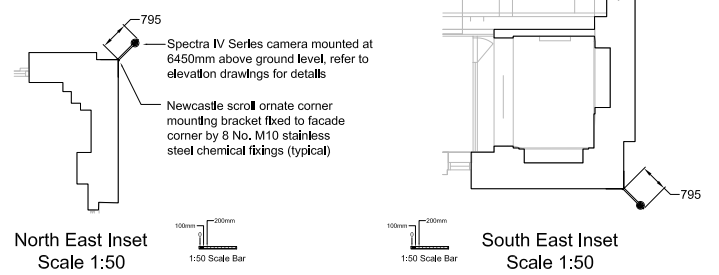
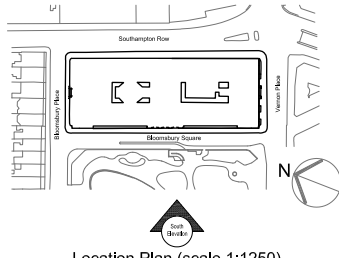
Drawing Title: Exterior CCTV Layout
Ground Floor
Sheet 6 of 7

Drawn by: GFS (FMC)	Scale: as indicated @A0
Checked by: GFS (AG)	Revision: Planning
Approved by: -	Date: August 2012
Drawn by: -	Rev: 02

GFS-VICH-LEVEL 00-006 Rev 02



Note: for mounting heights of cameras refer to elevation drawing No.s GFS-VICH-LEVEL 00-001 to 006



Rev	Description	Approved	No.	Date
01	Preliminary Issue			18-09-12

This Drawing References:				This Drawing References:			
Type:	Qty.	No.		Type:	Qty.	No.	
Architect	(All)	0770/01/423 Rev C4	Issued 13-11-02	Architect	(All)	0770/01/423 Rev C5	Issued 24-08-12
Architect	(All)	0770/01/423 Rev C4	Issued 24-08-12	Architect	(All)	0770/01/170 Rev 1b	Issued 12-09-12
Architect	(All)	0770/01/422 Rev C5	Issued 13-11-02	Architect	(All)	0770/01/171 Rev 1b	Issued 12-09-12

NOTES:

- All Dimensions given in mm
- This drawing is for planning only, not for construction
- This drawing is copyright and may not be altered, traced, copied, photographed or used for any purpose other than that for which it is issued without written permission from Global Fire & Security Ltd

Numbering/Circuit Convention:

Global Fire & Security Ltd
15 Napier Road
Bromley, Kent, UK
BR2 9DA
TEL: +44 (0) 208 313 3336
FAX: +44 (0) 208 313 3339
Web: www.globalfiresecurity.com
E-mail: sales@globalfiregroup.co.uk

Project No: Victoria House
Southampton Row
London WC1B 4BA
Drawing No: Exterior CCTV Layout
Ground Floor (Plan View)
Sheet 7 of 7

Drawn by: GFS (PMC)
Checked by: GFS (AG)
Approved by:
First issued:
Drawing No: GFS-VICH-LEVEL 00-007 Rev 01
Scale: as indicated @A0
Version: Planning
Date: September 2012