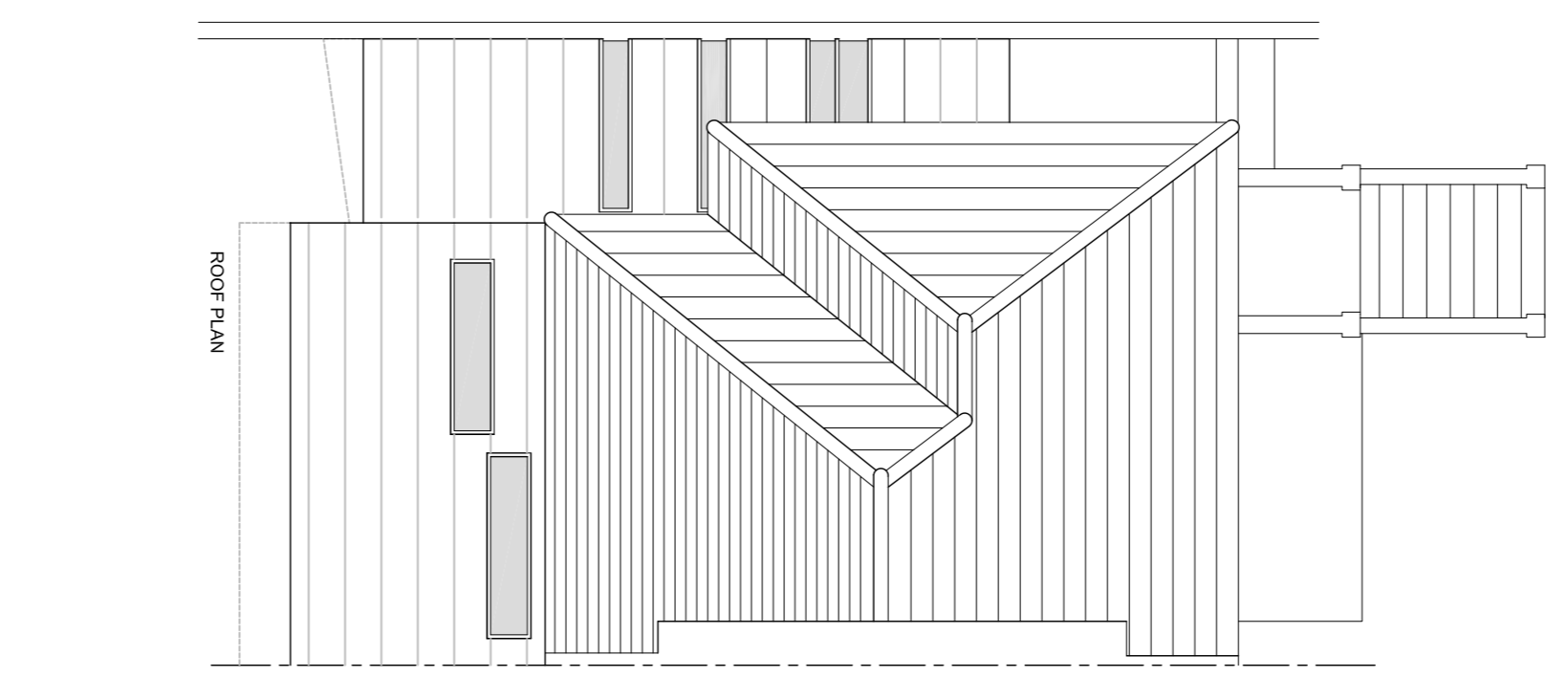
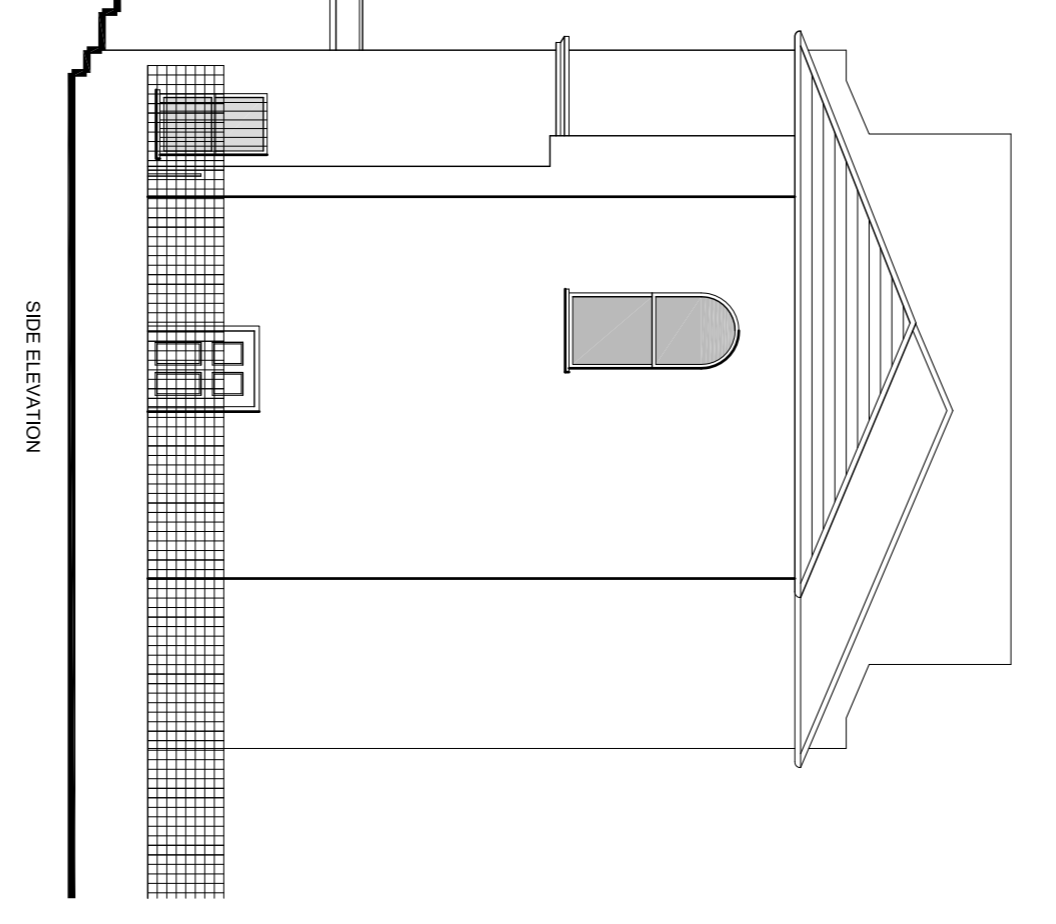


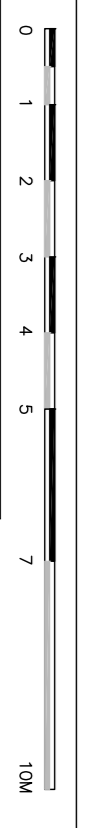
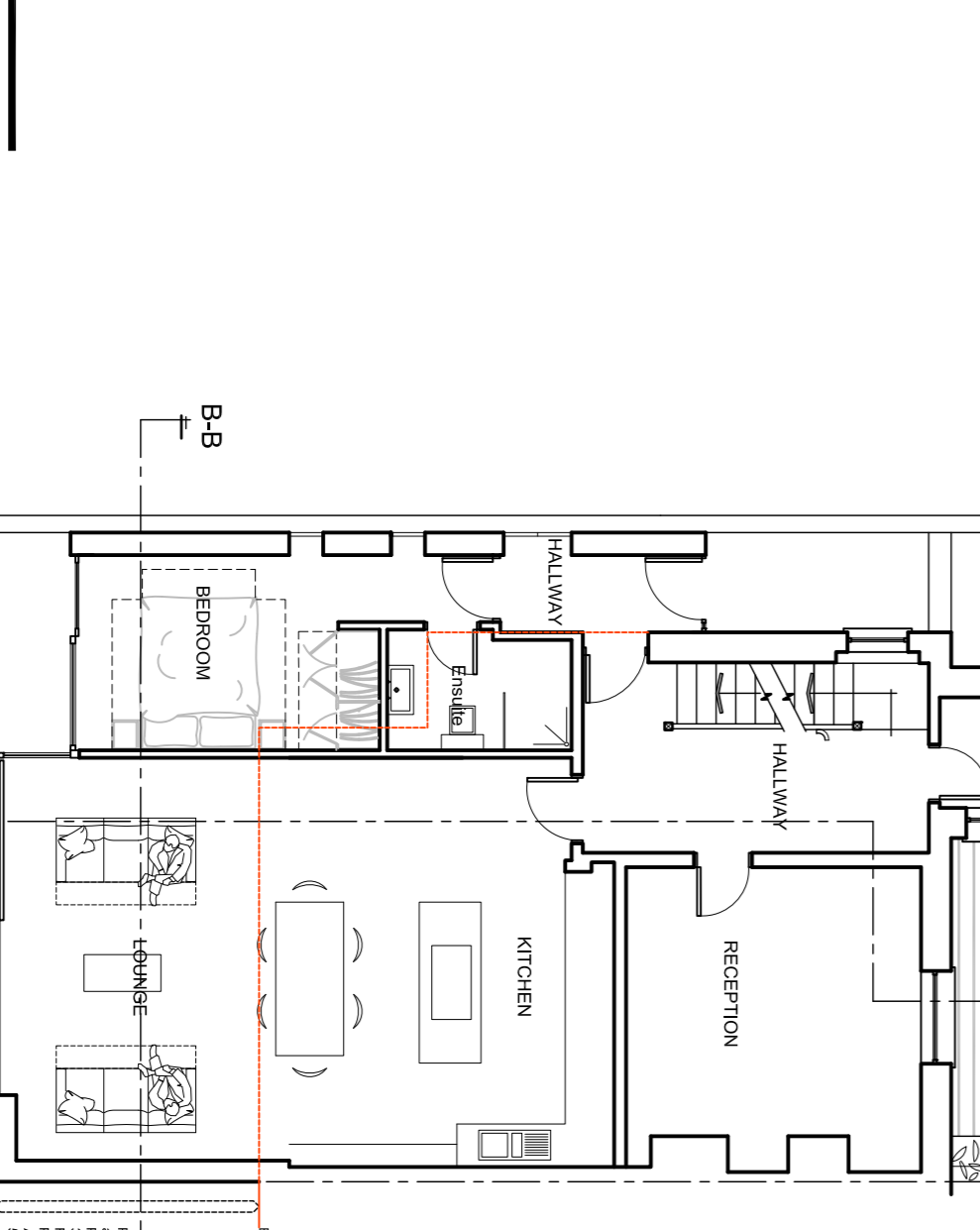
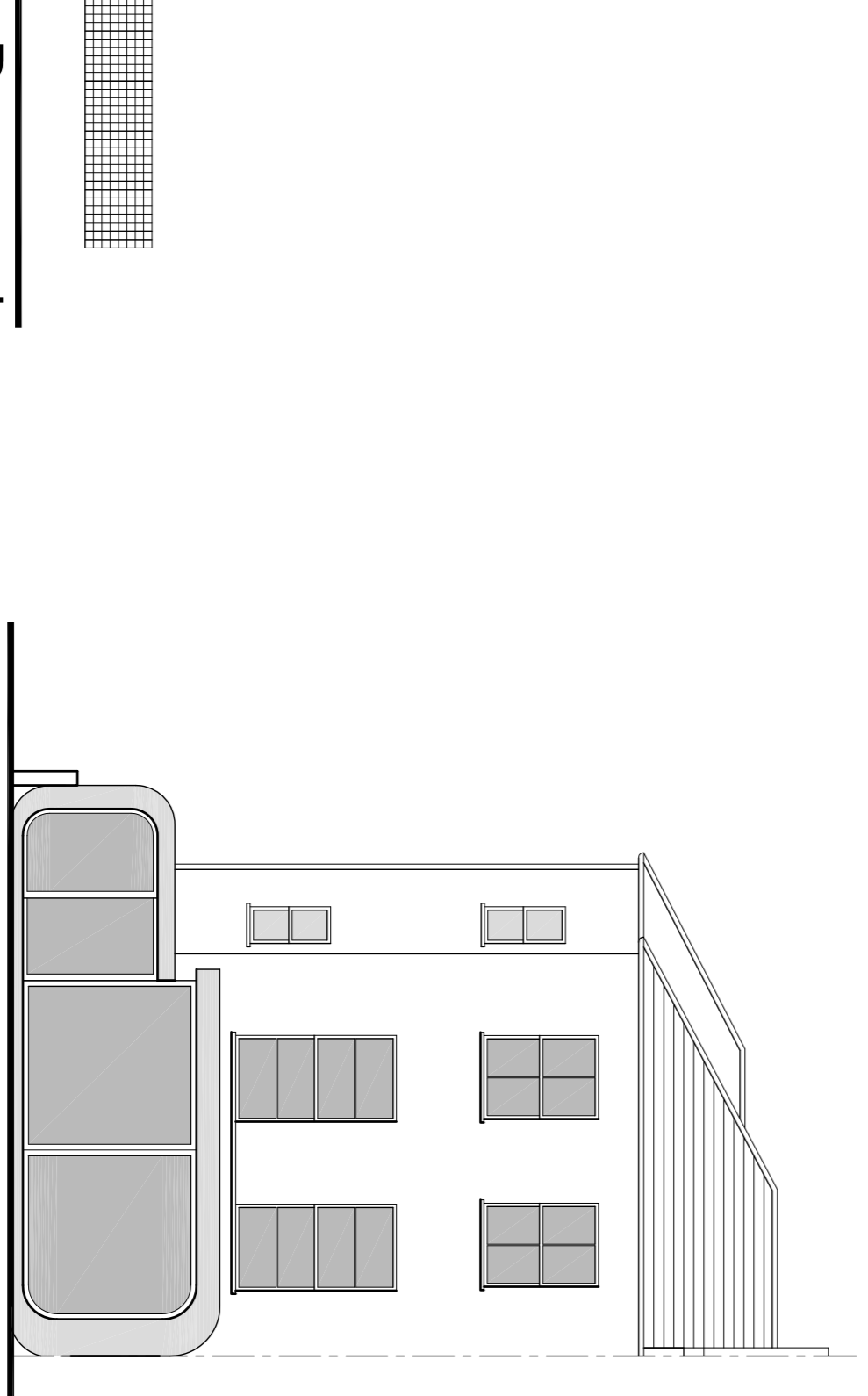
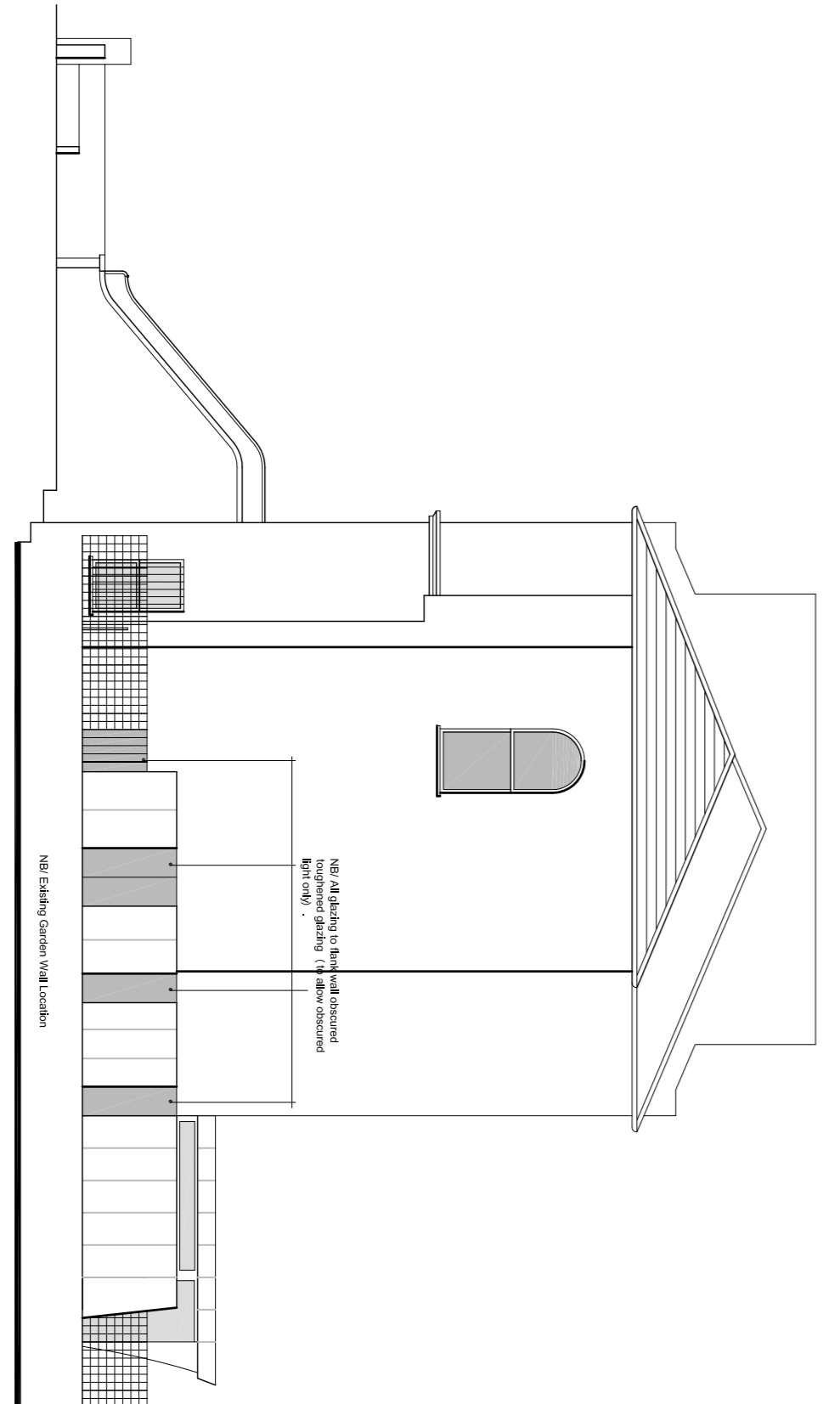
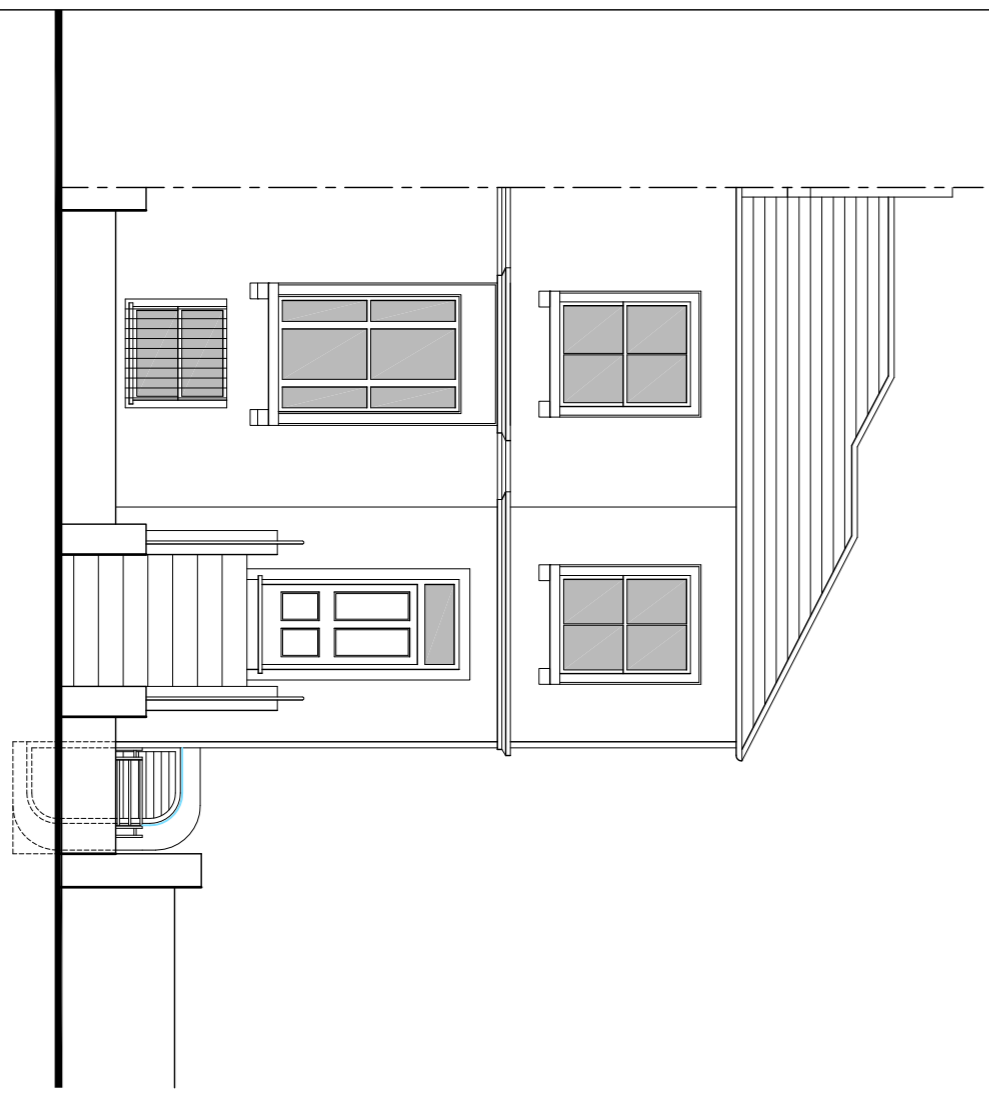
OS Site Plan 1-1250



Existing



Proposed



Revisions

October 2012 - Rev D: Elevation front light wall by 1M in depth. See also Section drawing reference: G-S-01 Rev D.
Onsite bedroom with provision of warm down/chairlift room with shower room.

10 PRIOR ROAD, LONDON, NW6 4SG

EXISTING & PROPOSED PLANS AND ELEVATIONS

Project No: **11-103** / Rev: **G-G-E-00**

Scale: **1:100**

Date: **July 2012**

Drawn by: **KA**

Checked by: **KA**

Author: **KARLENE SHERRER**

Project: **D**

Ka
Knight Associates
Surveying - Architecture - Engineering

24 South 27 Riverside Court, Palm Court, Richmond, Surrey TW9 1DF