

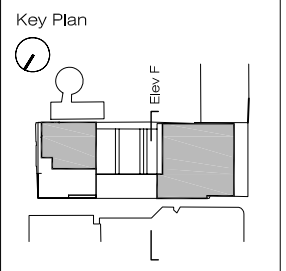
APPROVED



COURTYARD WEST ELEVATION F
FRD-PL-305

- ▼ ROOF LEVEL
- ▼ SIXTH FLOOR
- ▼ FIFTH FLOOR
- ▼ FOURTH FLOOR
- ▼ THIRD FLOOR
- ▼ SECOND FLOOR
- ▼ FIRST FLOOR
- ▼ GROUND FLOOR
- ▼ LOWER GROUND FLOOR
- ▼ LOWER GARDEN LEVEL

General notes:
This drawing is copyright of KSR architects. This drawing must be read in conjunction with the designer's risk assessment, specification and all other relevant documentation and drawings. KSR architects accept no liability for any expense, loss or damage of whatsoever nature and however arising from any variation made to this drawing or in the execution of the work to which it relates which has not been referred to them and their approval obtained.
Do not scale from this drawing or the digital data, only figured dimensions are to be used. For Planning refer to linear scale.
Check all dimensions on site.



- LEGEND**
EXTERNAL MATERIALS SCHEDULE
- (A) Stone Cladding
 - (B) PPC aluminium framed glazing system
 - (C) Glazed balustrading
 - (D) PPC metal louvered sunscreen
 - (E) PPC metalwork
 - (F) Stone panels
 - (G) Zinc insulated panels
 - (H) Brick
 - (J) Hard wood timber balcony soffits
 - (K) Opaque glazed privacy panels
 - (L) Metal shutters
 - (M) Flat Roof
 - (N) Green / Brown Roof
 - (O) Opaque glazed balustrade and timber handrail
 - (P) Glass balustrade and timber handrail
 - (Q) Green Wall
 - (R) Glazed shop front

A	For planning submission	25.09.09	AM	GU
	PL PLANNING	11.08.09		
Rev	Notes	25.09.09	By	Chris

© KSR architects

KSR architects

KSR architects
14 Greenland Street
London
NW1 2ND
t: +44 (0)20 7692 5000
f: +44 (0)20 7692 5050
www.ksr-architects.com

Project:
120 Finchley Rd
London NW3

Title:
Proposed development
Elevation F
Courtyard West Elevation

Date: 23.01.09 Drawn by: AT Checked: ECH

Scale: 1:25 @ A1 / 1:100 @ A3

Project Ref:	Drawing Ref:	Revision:
FRD	FRD-PL-306	A

