

PROPOSED EXTENSION REDUCED IN HEIGHT BY 465mm, AS PER PLANNING OFFICERS COMMENTS

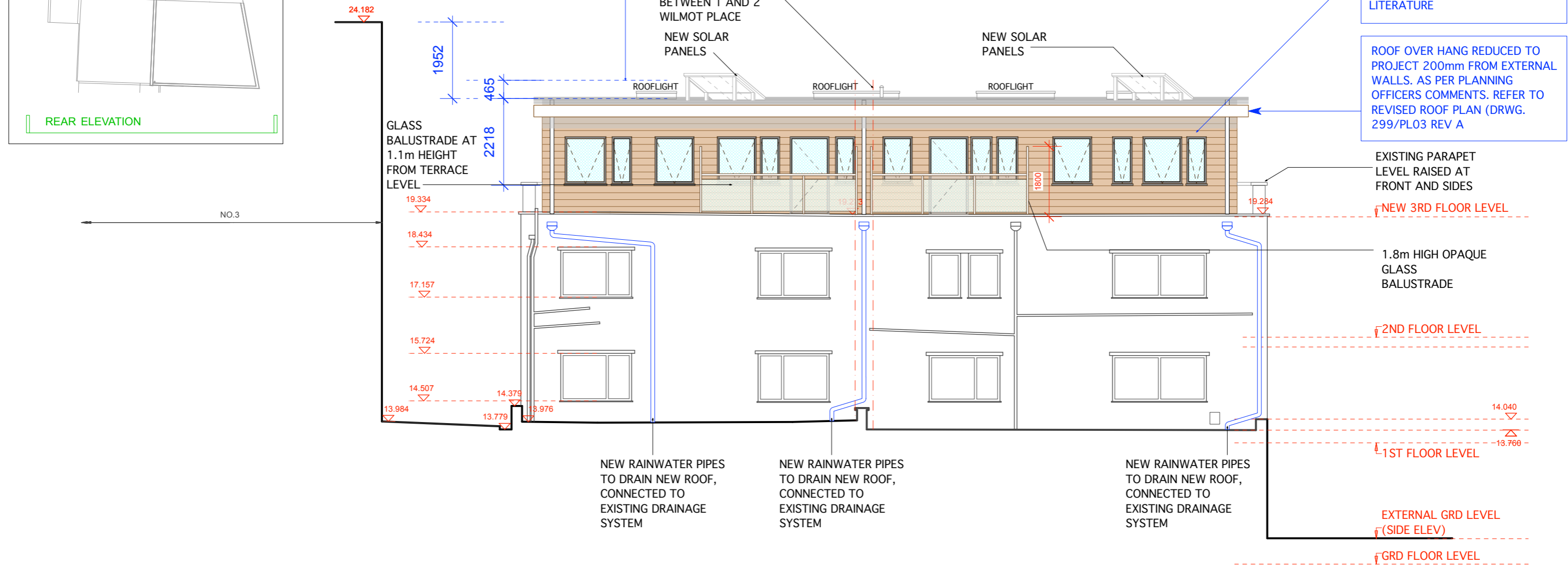
OUTLINE OF PARTYWALL BETWEEN 1 AND 2 WILMOT PLACE

NEW SOLAR PANELS

NEW SOLAR PANELS

TIMBER CLADDING TO FRONT AND REAR ELEVATION WITH FLAT ROOF LAID TO FALLS. REFER TO TIMBER CLADDING PRODUCT LITERATURE

ROOF OVER HANG REDUCED TO PROJECT 200mm FROM EXTERNAL WALLS. AS PER PLANNING OFFICERS COMMENTS. REFER TO REVISED ROOF PLAN (DRWG. 299/PL03 REV A



REAR ELEVATION - DATUM 5m

PLANNING APPLICATION

PROPOSED SECTIONAL REAR ELEVATION

REV.	DATE	DESCRIPTION	REV.	DATE	DESCRIPTION	REV.	DATE	DESCRIPTION	NOTE:	CLIENT:	PROJECT:	DATE:
A	2012-09-17	WINDOWS AT REAR OF EXTENSION AMENDED, NEW EXTENSION REDUCED IN HEIGHT, AS PER PLANNING OFFICERS COMMENTS.	-	-	-	-	-	-	<p>DO SCALE FROM THIS DRAWING.</p> <p>ALL DIMENSIONS ARE IN MILLIMETERS. INCONSISTENCIES ARE TO BE REPORTED TO THE ARCHITECT IMMEDIATELY.</p> <p>COPYRIGHT IS HELD BY SIMON MILLER ARCHITECTS LTD</p>	APEX HOUSING SOLUTIONS	EXTENSION AND INTERNAL ALTERATIONS	OCTOBER 2011
-	-	-	-	-	-	-	-	DRAWN BY: NAN				
-	-	-	-	-	-	-	-	SCALE: 1:100 @ A3				
-	-	-	-	-	-	-	-	DRAWING NO.: 291-PA05				REVISION: A
-	-	-	-	-	-	-	-	<p>Simon Miller Architects Ltd 12 Forres Gardens Temple Fortune London NW11 7EX</p> <p>Tel: 020 8201 9875 Fax: 020 8201 9877 Web: simonmillerarchitects.com Email: info@simonmillerarchitects.com</p>				
-	-	-	-	-	-	-	-	1-2 WILMOT PLACE NW1 9JS				PROPOSED SECTIONAL REAR ELEVATION

REAR ELEVATION - DATUM 0m