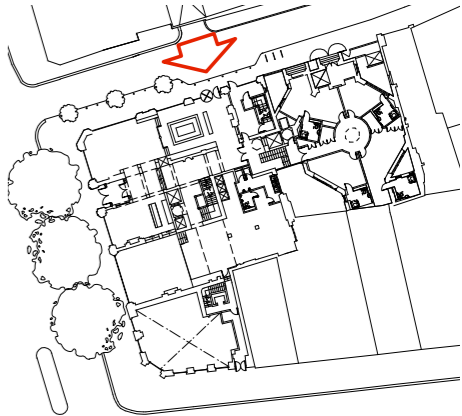


Notes

All setting out must be checked on site
All levels must be checked on site
All fixings and weathervings must be checked on site
All dimensions must be checked on site
This drawing must not be scaled
This drawing must be read in conjunction with the relevant specification clauses
This drawing must not be used on site unless issued for construction



Slate to Match Existing
Slate to Match Existing
Lead Lined Dormer Windows
Slate to Match Existing
Lead Lined Dormer Windows

Roof +154.20
Ridge Line +152.00
7th Floor +151.20
Ridge Line +149.30
6th Floor +148.20
5th Floor +145.10
4th Floor +141.48
3rd Floor +137.55
2nd Floor +133.55
1st Floor +129.00
Ground Floor +124.40

E	Stallrisers Added To Shopfronts	23/01/08
D	Planning Issue	05/10/07
C	Roof Materiality Amended	01/10/07
B	Roof and Campanile Link Amended	11/08/07
A	Roof and Campanile Link Amended	31/07/07

Revisions

hd

Harper_Downie

design architecture

Gate House

No1 St John's Square

London EC1M 4DH

T +44(0)2 7490 76 74

F +44(0)2 7490 49 41

E studio@harperdownie.com

www.harperdownie.com

Client Kingsgate London Properties Ltd

Project 2-6 Southampton Row
118-120 High Holborn

Drawing title Proposed Elevation BB

APPROVED

Scale A1 - 1:100, A3-1:200 Dwg. No. Rev

Date 14/06/07 467GE02

Status Information Tender Construction Record

Do not scale from this drawing. All dimensions are to be checked on site.
Issued for purposes indicated only. Information contained within this drawing is the sole copyright of
Harper_Downie Ltd and is not to be reproduced without express permission.

