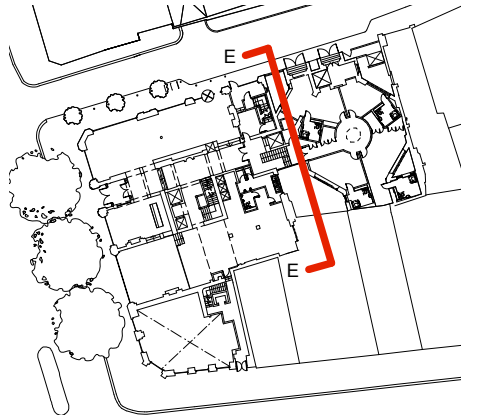


Notes

All setting out must be checked on site
All levels must be checked on site
All fixings and weathervings must be checked on site
All dimensions must be checked on site
This drawing must not be scaled
This drawing must be read in conjunction with the relevant specification clauses
This drawing must not be used on site unless issued for construction



Key

Existing Retained Fabric



A Planning Issue 05/10/07

Revisions

hd

Harper_Downie

design architecture

Gate House

No1 St John's Square

London EC1M 4DH

T +44(0)2 7490 76 74

F +44(0)2 7490 45 41

E studio@harperdownie.com

www.harperdownie.com

Client Kingsgate London Properties Ltd

Project 2-6 Southampton Row
118-120 High Holborn

Drawing title Proposed Section EE

APPROVED

Scale A1 - 1:100, A3-1:200 Dwg. No. Rev

Date 14/06/07 **467GS05**

Status Information Tender Construction Record

Do not scale from this drawing. All dimensions are to be checked on site.
Harper_Downie Ltd and is not to be reproduced without express permission.
Harper_Downie Ltd and is not to be reproduced without express permission.