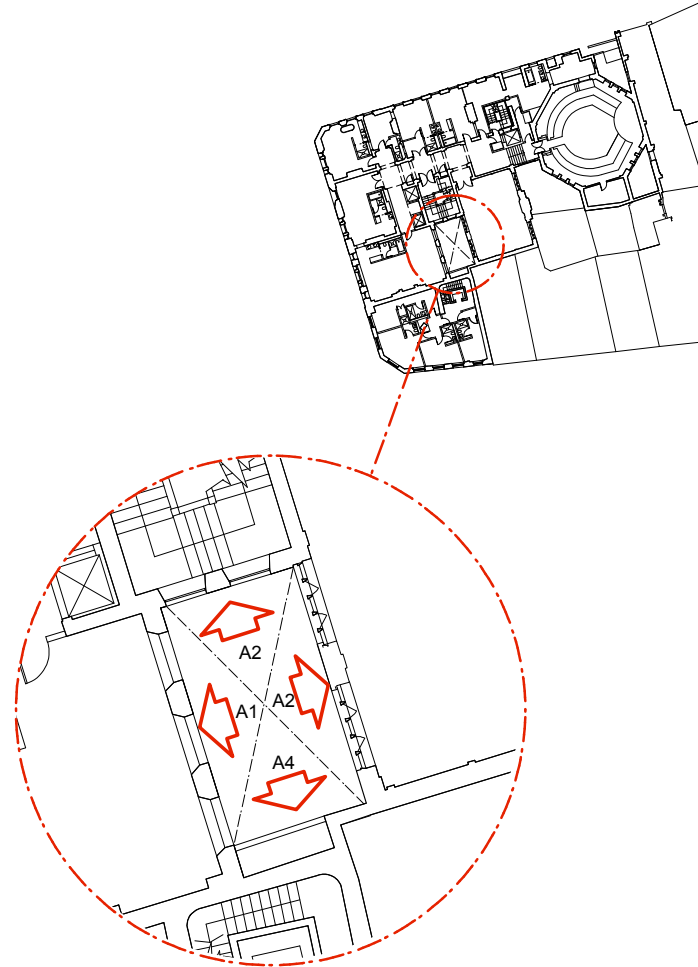
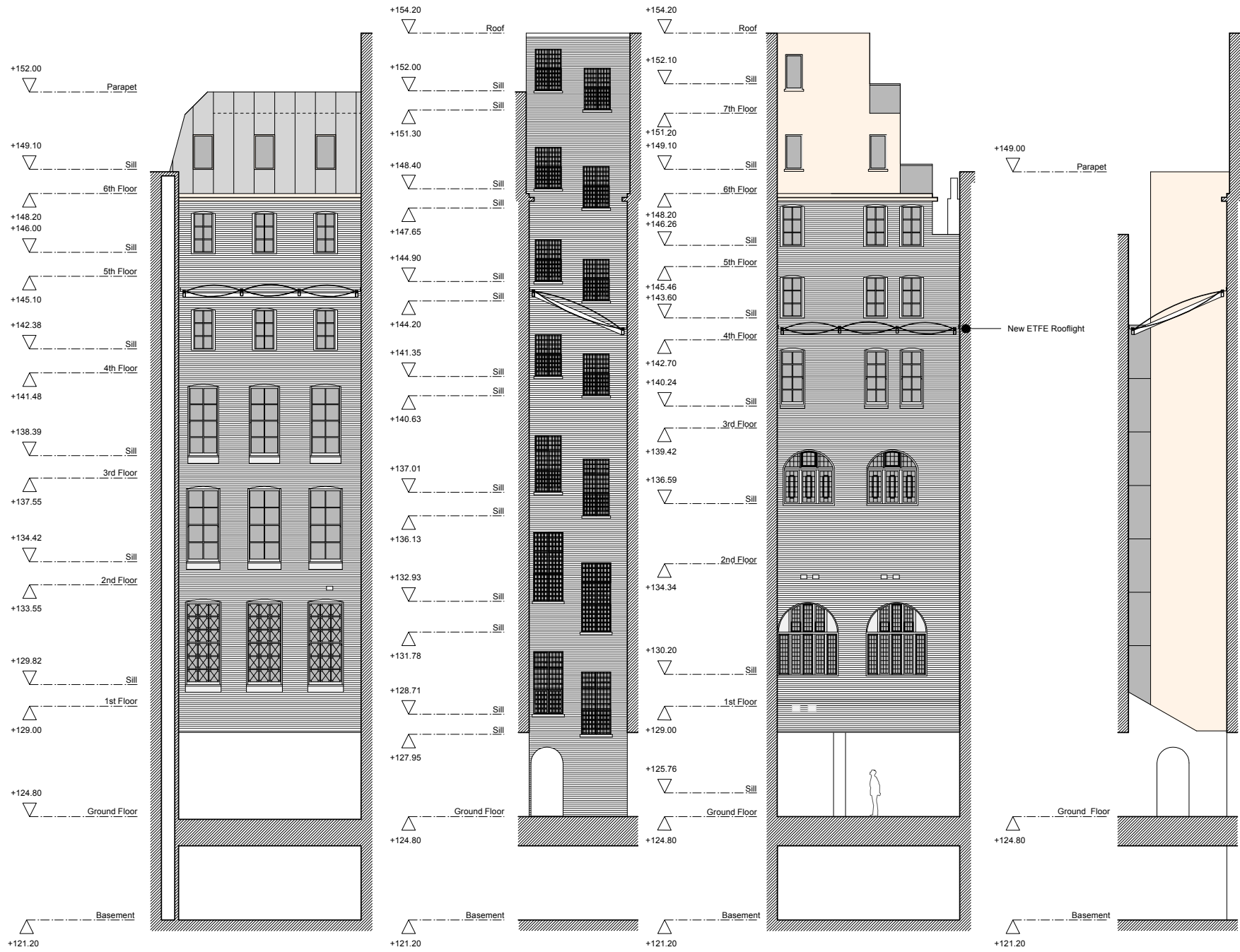


Notes

All setting out must be checked on site  
All levels must be checked on site  
All fixings and weathervings must be checked on site  
All dimensions must be checked on site  
This drawing must not be scaled  
This drawing must be read in conjunction with the relevant specification clauses  
This drawing must not be used on site unless issued for construction



A Planning Issue 05/10/07

Revisions

hd

Harper\_Downie  
design architecture

Gate House

No1 St John's Square

London EC1M 4DH

T +44(0)2 7490 76 74

F +44(0)2 7490 49 41

E studio@harperdownie.com

www.harperdownie.com

Client Kingsgate London Properties Ltd

Project 2-6 Southampton Row  
118-120 High Holborn

Drawing title Proposed Lightwell Elevation A

APPROVED

Scale A1 - 1:100, A3-1:200 Drwg. No. Rev

Date 14/06/07 487GE04 A

Status ☒ Information ☐ Tender ☐ Construction ☐ Record

Do not scale from this drawing. All dimensions are to be checked on site.  
Issued for purposes indicated only. Information contained within this drawing is the sole copyright of Harper\_Downie Ltd. and is not to be reproduced without express permission.