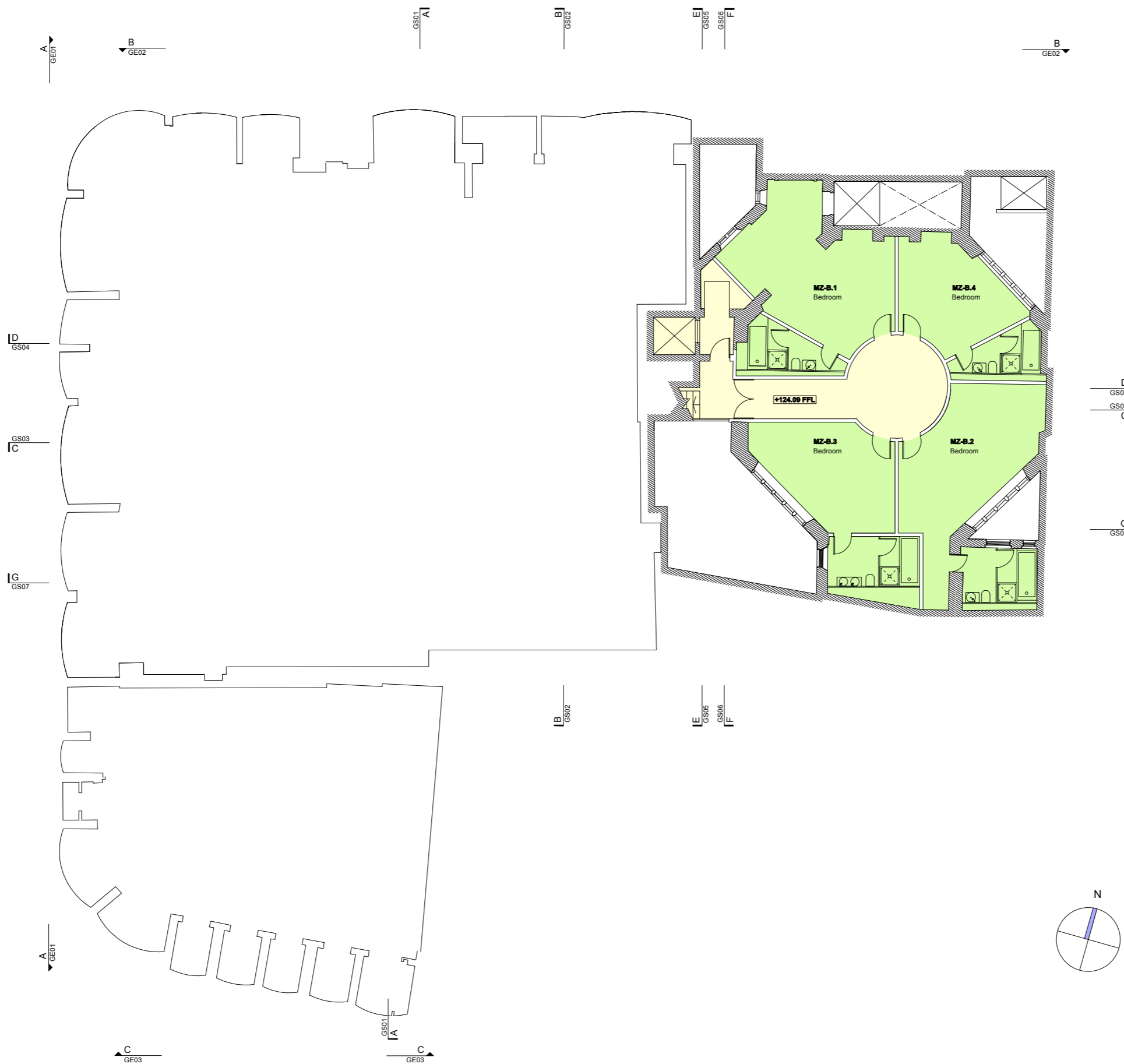


Notes
 All setting out must be checked on site
 All levels must be checked on site
 All fixings and weathings must be checked on site
 All dimensions must be checked on site
 This drawing must not be scaled
 This drawing must be read in conjunction with the relevant specification clauses
 This drawing must not be used on site unless issued for construction



2-6 Southampton Row

Space

MZ-B.1	Bedroom
MZ-B.2	Bedroom
MZ-B.3	Bedroom
MZ-B.4	Bedroom

Key

	Circulation Areas
	Bedrooms
	Existing Retained Fabric

E	Planning issue	05/10/07
D	General amendments	26/09/07
C	General amendments	13/06/07
B	General amendments	08/06/07
A	BOH Lift location and room titles amended	29/05/07

Revisions



Harper Downie
 design architecture
 Gate House
 No1 St John's Square
 London EC1M 4DH
 T +44(0)2 7499 75 14
 F +44(0)2 7499 49 41
 E studio@harperdownie.com
 www.harperdownie.com

Client	Kingsgate London Properties Ltd
Project	2-6 Southampton Row 118-120 High Holborn

Drawing title Proposed Basement Mezzanine Floor Plan

APPROVED

Scale	A1 - 1:100, A3-1:200	Drwg No.		Rev	
Date	13/06/07	467GAMB		<input checked="" type="checkbox"/>	<input type="checkbox"/>

Status Information Tender Construction Record
 Do not scale from this drawing. All dimensions are to be checked on site based for purposes indicated only. Information contained within this drawing is the sole copyright of Harper Downie Ltd. and is not to be reproduced without express permission.