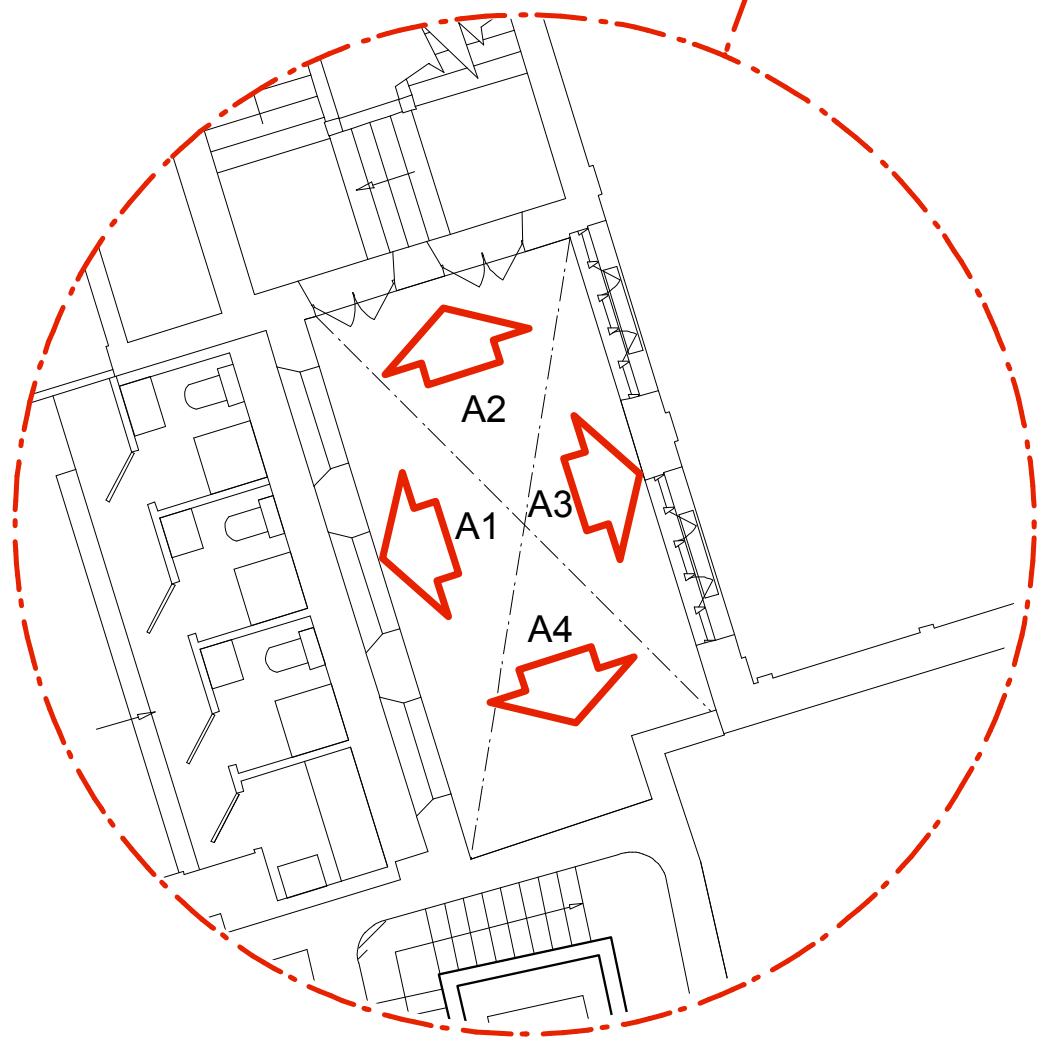
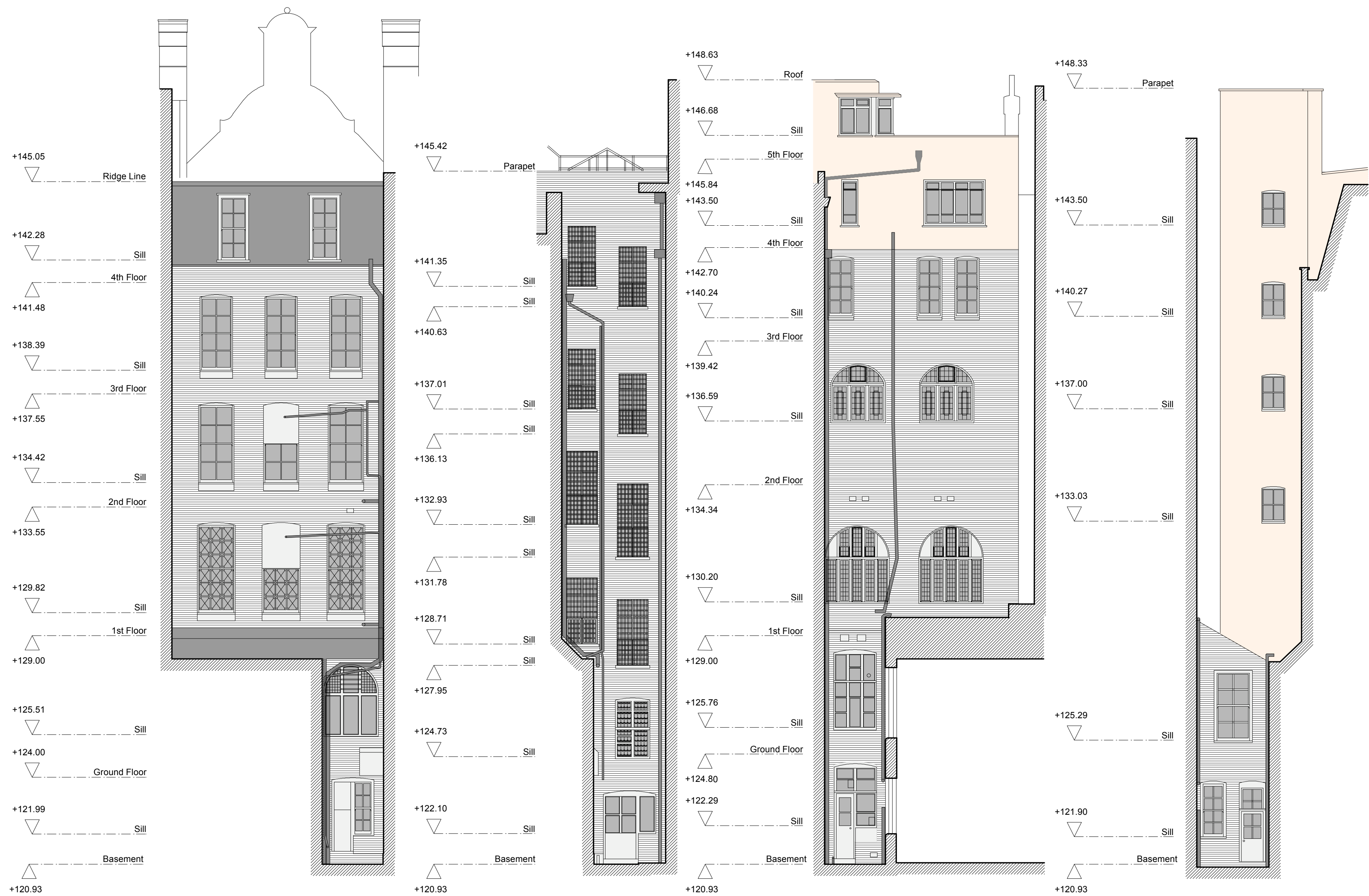


Notes

All setting out must be checked on site
All levels must be checked on site
All fixings and weathers must be checked on site
All dimensions must be checked on site
This drawing must not be scaled
This drawing must be read in conjunction with the relevant specification clauses
This drawing must not be used on site unless issued for construction



A Planning Issue 05/10/07

Revisions

hd

Harper Downie

design architecture

Gate House

No1 St John's Square

London EC1M 4DH

T +44(0)2 7490 76 74

F +44(0)2 7490 46 41

E studio@harperdownie.com

www.harperdownie.com

Client Kingsgate London Properties Ltd

Project 2-6 Southampton Row

118-120 High Holborn

Drawing title Existing Lightwell Elevation A

Scale A1 - 1:100, A3-1:200 Dwg. No. 467EE04

Date 14/06/07

Status ☒ Information ☐ Tender ☐ Construction ☐ Record

Do not scale from this drawing. All dimensions are to be checked on site. Issued for purposes indicated only. Information contained within this drawing is the sole copyright of Harper Downie Ltd. and is not to be reproduced without express permission.