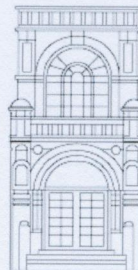


Our ref: 7634/JE/sm

6th November 2012

Planning Services,
Camden Town Hall,
Argyle Street,
London,
WC1H 8EQ

METROPOLITAN DEVELOPMENT CONSULTANCY



MDC

66 Bickenhall Mansions
Bickenhall Street
London W1U 6BX

t +44(0)207 486 6675

f +44(0)207 486 7206

e info@mdclondon.com

w www.mdclondon.com

Dear Sirs,

Re: 47 SOUTH HILL PARK, LONDON, NW3 2SS

I am applying here for planning permission to erect a two storey rear extension at ground and lower ground floor levels together with the further excavation of the existing lower ground floor at the above address.

Accordingly the following have been submitted via the planning portal for your attention:

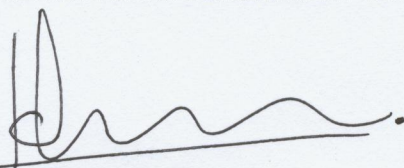
1. The completed planning application form.
2. A copy of the site location plan.
3. A copy of our existing drawings numbered 7634/02A, 03A & 07.
4. A copy of our proposed drawings numbered 7634/04A, 05A & 06.
5. A copy of our design and access statement dated November 2012 (our ref: 7634/D&A Statement).
6. A copy of our coloured photosheets numbered 7634/PS01, PS02.
7. A copy of our lifetime homes statement (our ref: 7634/Lifetime homes statement) together with associated drawing numbered 7634/LHS.
8. A copy of the Basement Impact Assessment from Soils Limited (ref: 12998/BIA rev. 2 November 2012).
9. A copy of the structural assessment (ref: 10-157) together with structural report & associated drawings numbered 10-157/001, 002, 003, 010 & 011 from CSE Consulting.

10. No fees are payable as this is a resubmission of an identical scheme which was previously withdrawn awaiting a full Basement impact assessment (application ref: 2012/3130/P).

I trust the above and enclosed will enable you to process this application, but should you have any queries or require any further information, please do not hesitate to contact me.

Yours faithfully,

METROPOLITAN DEVELOPMENT CONSULTANCY



Jon Evans RIBA

Director