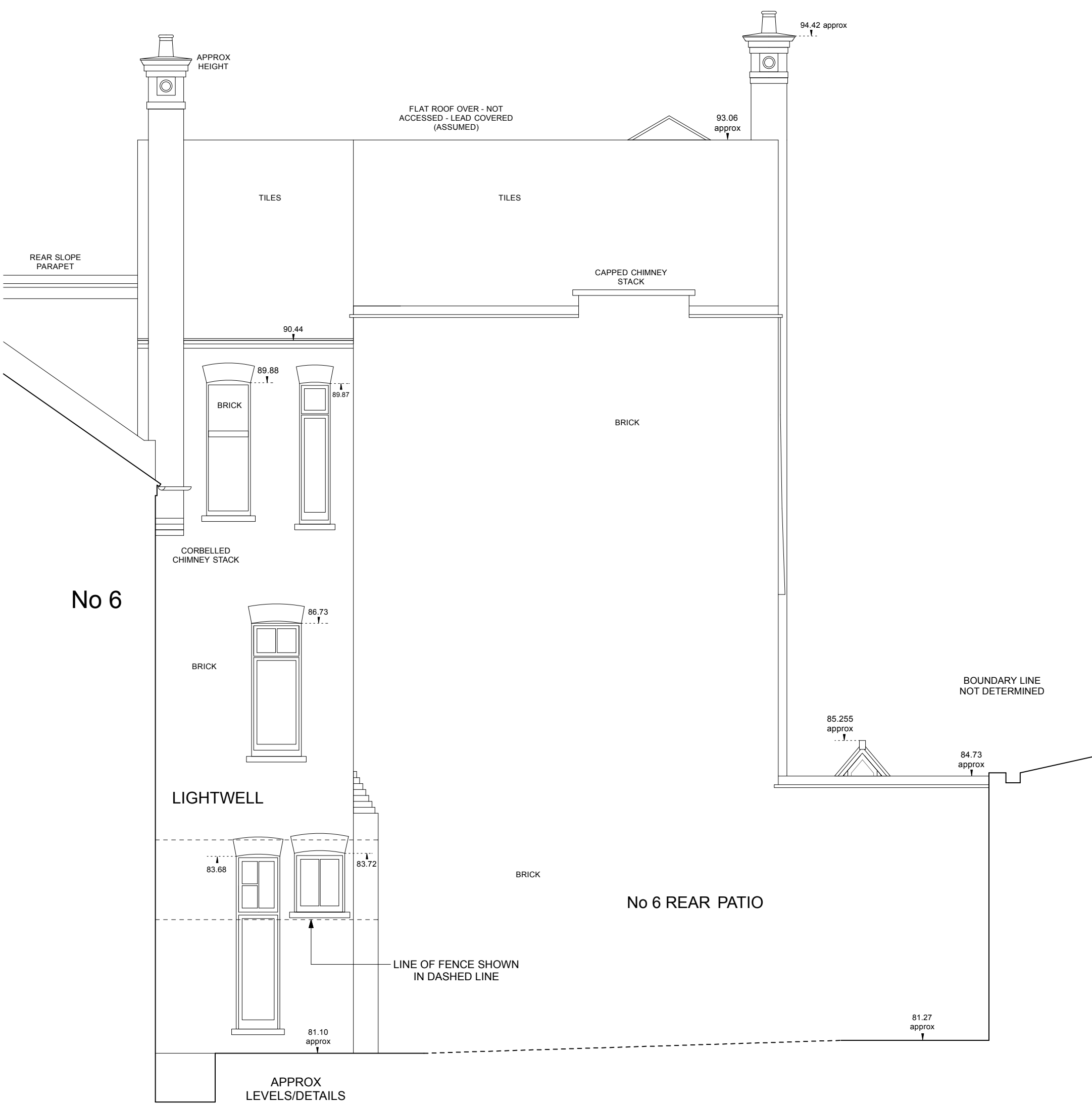


A1-size drawing  
1:50

- NOTES:
1. The accuracy and content of this drawing are dependent on the original specification and EDI should be consulted before use of other scales or use in CAD form.
  2. Where underground services are shown, all reasonable care has been taken within the spirit of the original specification and requirement. Before use of this information the user should consult EDI and satisfy themselves of the completeness and accuracy of such detail before undertaking any works. Due to the nature of the work, EDI does not accept any liability for the accuracy of the information and the selection equipment no guarantee can be given that all services have been recorded.
  3. All reasonable care has been taken in the survey detail represented on this drawing but any discrepancies must be reported to EDI immediately. Our aim is to produce the best possible results from the specification and the user must ensure that any comments are made.
  4. All levels and co-ordinates are related to the datums described. Levels shown at kerbs are channel level unless stated. The horizontal control of this survey is arbitrary. The vertical control of this survey is based on OS datum as translated from GPS stations using the OSGM02 transformation as supplied by the Ordnance Survey. The horizontal and vertical datums in the areas which should be disregarded, the levels should be taken from EDI survey coordinates.



REAR ELEVATION E

DATUM 78.00m A.O.D

SECTION B-B

DATUM 78.00m A.O.D

[illegible]