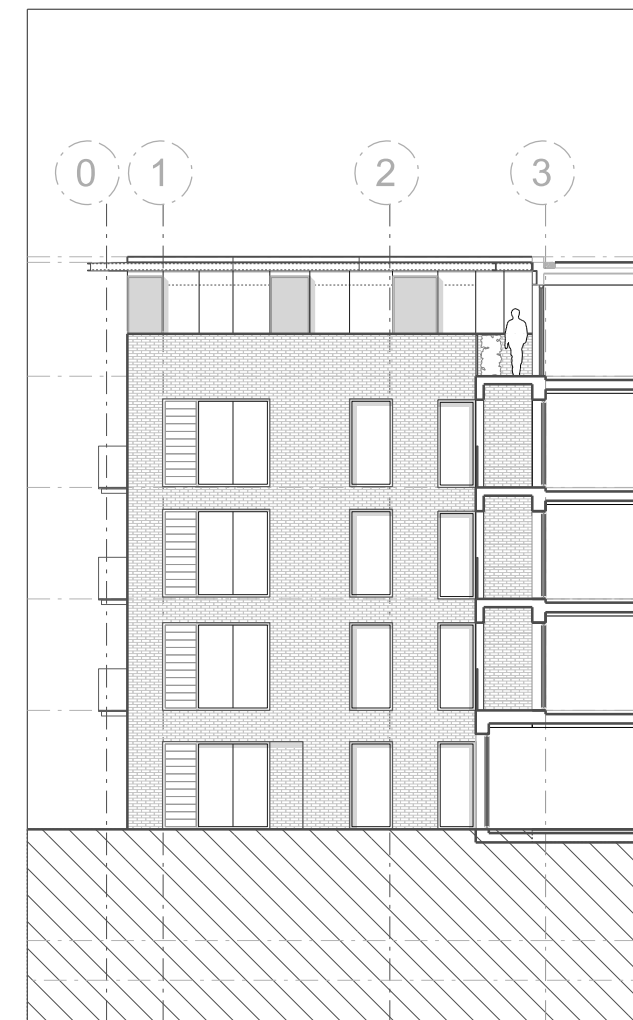
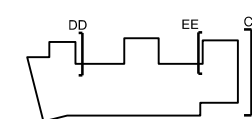
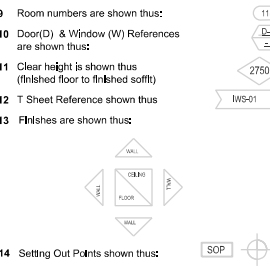




A4001 At GL C looking west  
DD



- |    |  |          |
|----|--|----------|
| 71 | General Notes and Grid setting out refer to AUCU/HAS/3000  |          |
| 72 | All dimensions to be checked on site   |          |
| 73 | Any discrepancies between drawings to be reported to the Architect immediately.  |          |
| 74 | All Levels are above Ordnance datum (AOD)  |          |
| 75 | New Levels are shown thus:   | EX-0.345 |
| 76 | Existing Levels are shown thus:  | EX-0.345 |
| 77 | Related to the AUCU/HAS  | EX-0.345 |
| 78 | Use Boring dimensions only do not scale from drawings  |          |
| 79 | Refer to Structural Engineers drawings for all structural and services information.  |          |
| 80 | For references see the Design Drawings and Specifications  |          |
| 81 | For elements of work subject to Contractor's Design, this drawing is indicative of the actual and the Contractor is responsible for the detailed design and for the final installation. All the parameters defined in the specification, design drawings, contract terms and conditions apply. |          |
| 82 | Room numbers are shown thus:   | 115      |
| 83 | Doors (D) & Windows (W) References are shown thus:   | 115      |
| 84 | Clear height is shown thus (finished floor to finished roof)   | 270      |
| 85 | Clear height is shown thus (finished floor to finished roof)   | 270      |
| 86 | Plinthes are shown thus  | 115-01   |
| 87 |  |          |
| 88 |  |          |
| 89 |  |          |
| 90 |  |          |
| 91 | Setting Out Points shown thus:   | SCP      |
| 92 | Refer to AUCU/HAS/3000 for Sheet 1   |          |
| 93 | Refer to AUCU/HAS/1017 for Architectural Specification   |          |



Work Package	Cost Code	Info/Ref	Tender	Contract	Construction	Date	Revision	Description	Date	Revision	Description	Date	Rev	Revision
						11.10.2012	A	Issued for design team coordination, Memo 10						
						11.10.2012	B	Issued for consultant Memo 010						
						26.10.2012	C	Issued under memo 003 for Planning Application						
						26.10.2012	C	Issued for Planning Application, Memo 025						
						01.11.2012	D	Revised drawings Memo 026						
						06.11.2012	E	Revised drawings Memo 026						
						06.11.2012	E	Revised for Planning Application memo 030						

Project

Marygrove Road Housing

Subject

Proposed East + West Elevations

Architects

Haskins Architects Partnership LLP  
 27 Broadley Terrace, London, W6D 1EL  
 T: 020 7724 1751 E: [enquiry@haskins.co.uk](mailto:enquiry@haskins.co.uk)

Sort Code

Drawing Number

Rev.

AMRH

4001

E

Date

30.10.2012

Scale

1:100

at A2







Roof  
FFL +61.515

Parapet  
FFL +61.665

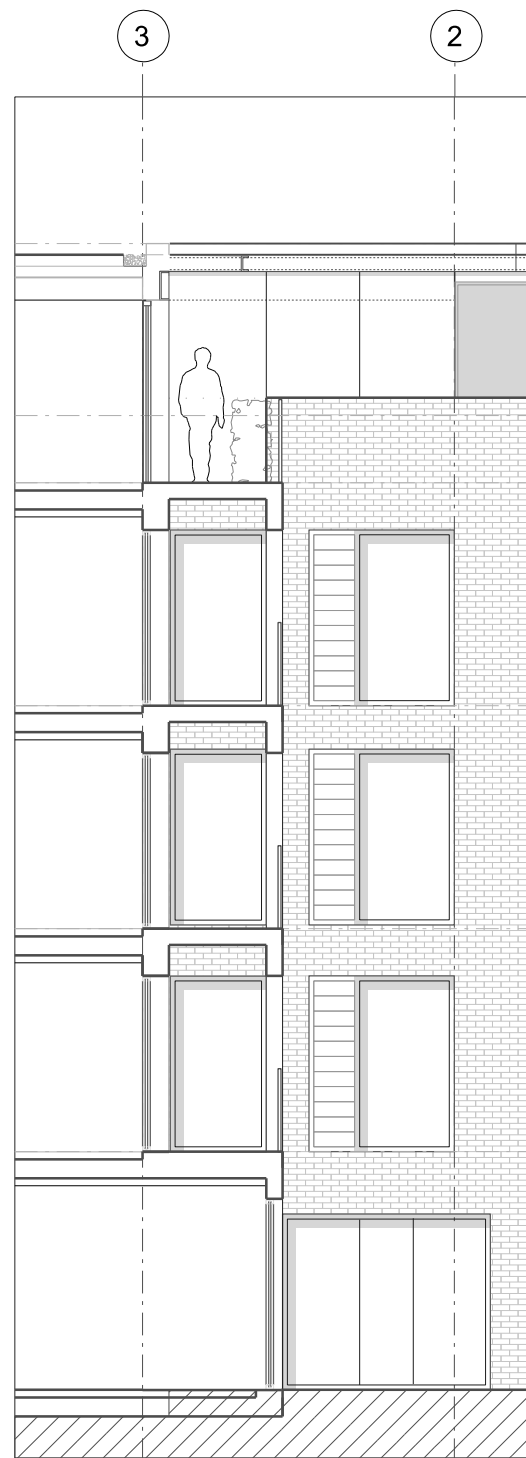
L04  
FFL +58.500

L03  
FFL +55.550

L02  
FFL +52.600

L01  
FFL +49.650

L00  
FFL +46.500



02 Typical Bay - Section

#### General Notes:

- G1** For Site and Grid setting out refer to A/UCLH4A/3000
- G2** All dimensions to be checked on site
- G3** Any discrepancies between drawings to be reported to the Architect immediately.
- G4** All Levels are above ordnance datum (AOD)  
New Levels are shown thus: +20.345  
Existing Levels are shown thus: EX+20.345  
Retained Existing Levels: EX+20.345
- G5** Use figured dimensions only; Do not scale from drawings. IF IN DOUBT, ASK.
- G6** Refer to Structural Engineers drawings for all structural and services information.
- G7** For tolerances see the Design Drawings and Specifications
- G8** For elements of work subject to Contractor's Design, this drawing is indicative of the visual & performance requirements only. The Contractor is responsible for the detailed design and coordination of the installation within the parameters defined in the specification, design drawings, contract terms and contract documents.
- G9** Room numbers are shown thus: 115
- G10** Door(D) & Window (W) References are shown thus: D1, W1
- G11** Clear height is shown thus (finished floor to finished soffit): 2750
- G12** T Sheet Reference shown thus: WIS-01
- G13** Finishes are shown thus:



- G14** Setting Out Points shown thus: SOP
- G15** Refer to A/UCLH4A/9100 for T Sheet references, and to A/UCLH4A/9102 for Architectural Specifications.

Work Package	Cost Check	Info/Briefing	Tender	Contract	Construction
-					

Date	Ref.	Revision
26.10.12	A	Issued under memo 023 for Planning Application
30.10.12	A	Issued under memo 025 for Planning Application
02.11.12	B	Revised for Planning Application: memo 030

Date	Ref.	Revision

Project	Maygrove Road Housing
Subject	Typical Bay North Gridlines D-C
Architects	Hopkins Architects Partnership LLP 27 Broadley Terrace, London, NW1 6LG T: 020 7724 1751 E: mail@hopkins.co.uk

Sort Code	Drawing Number	Rev.
A/MRH	5002	B
Date	30.10.12	Scale 1:100 at A2