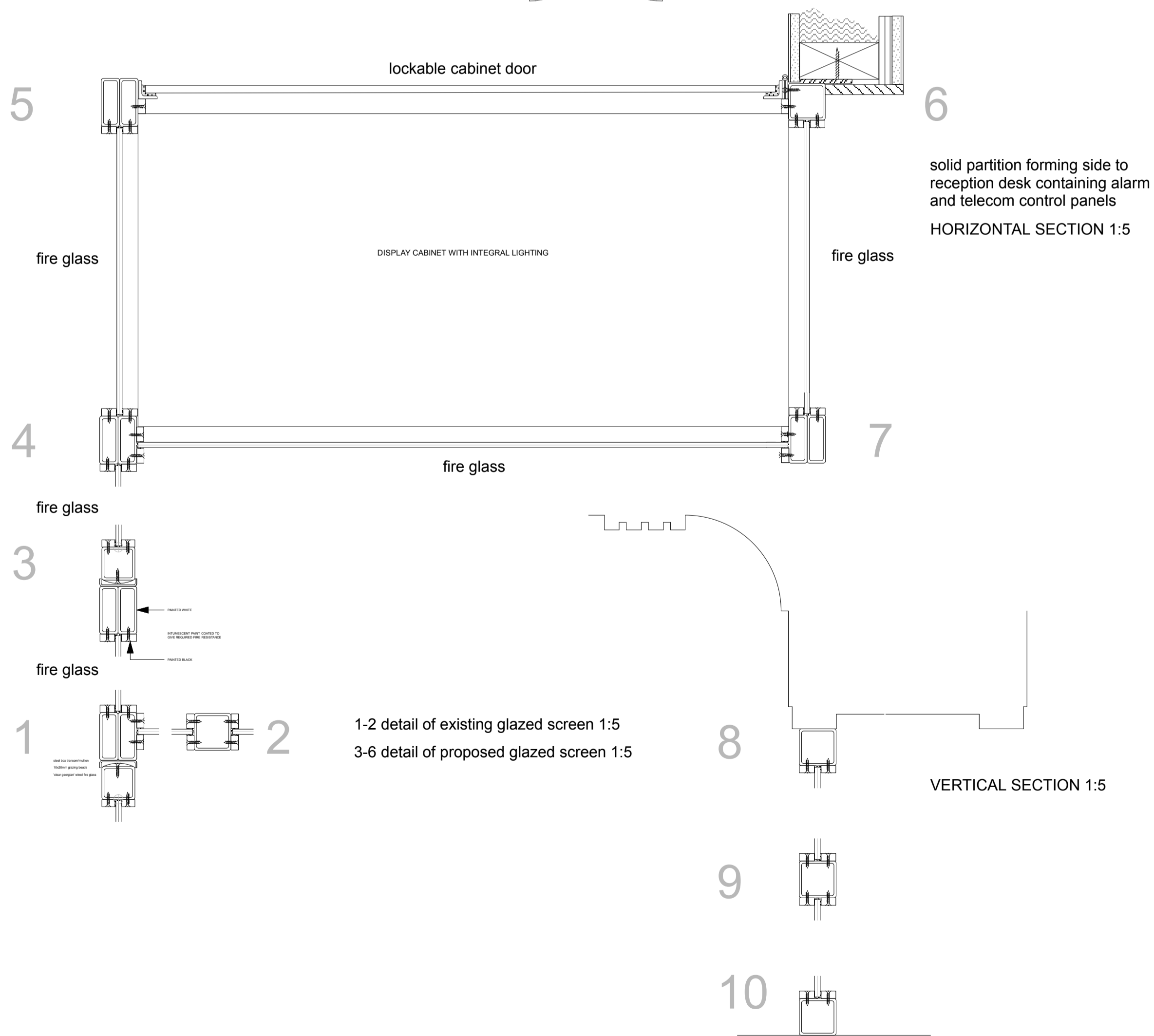
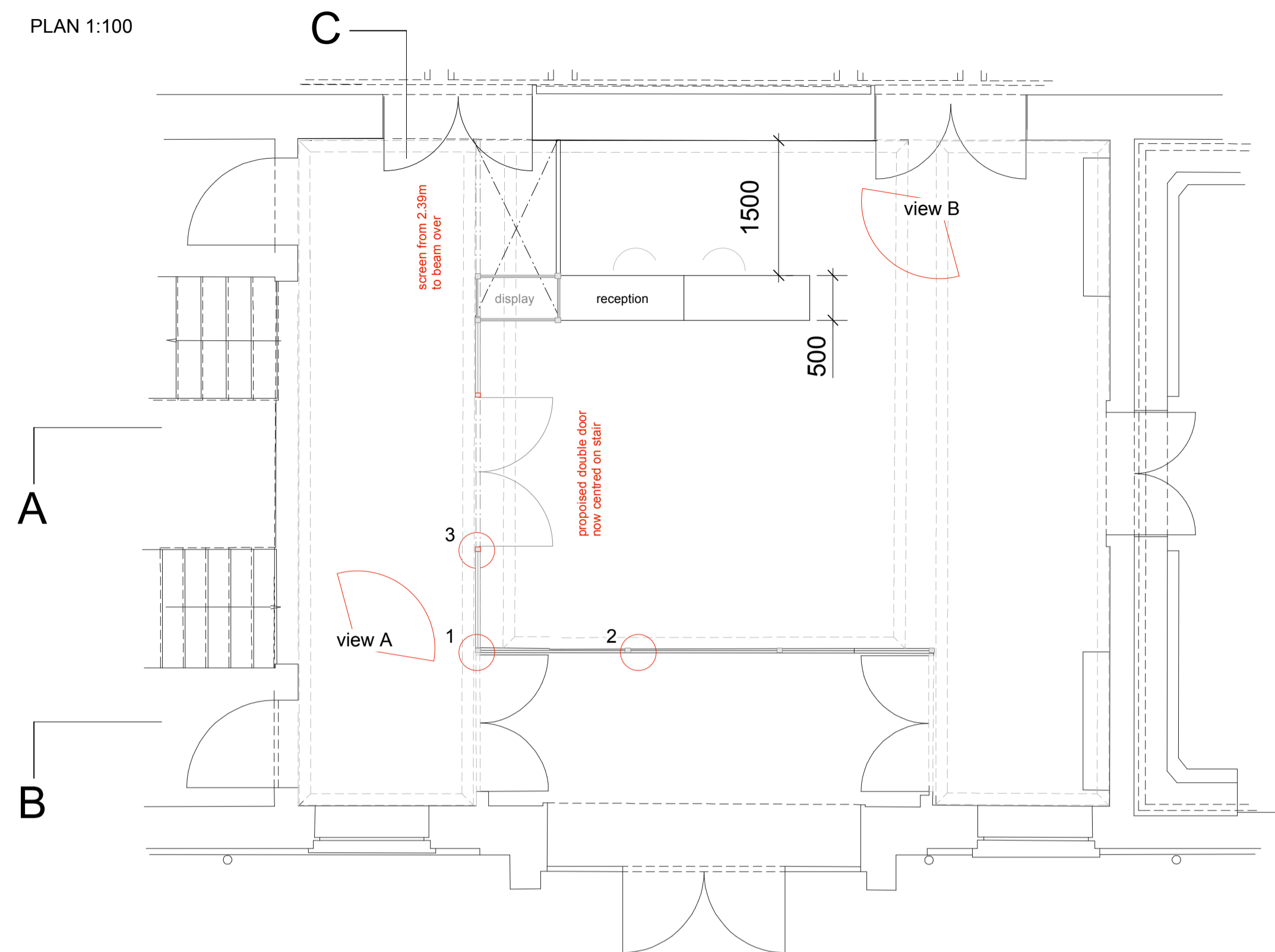
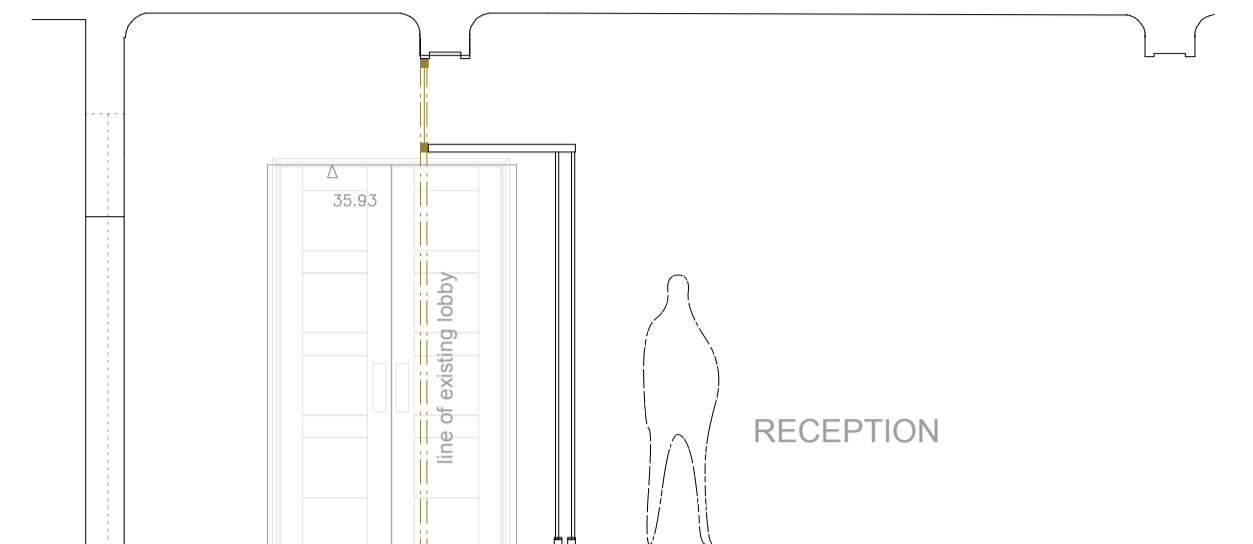


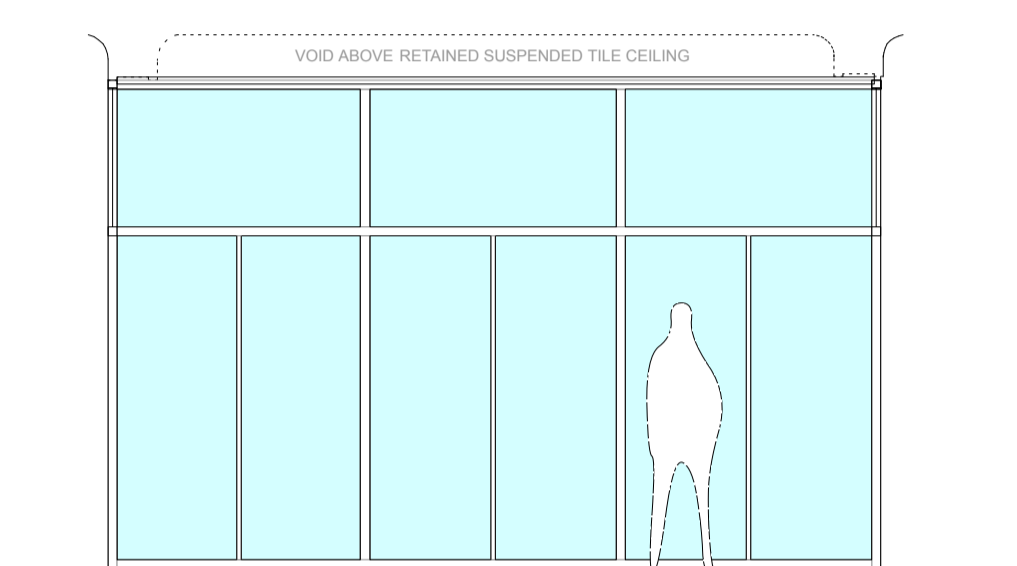
PLAN 1:100



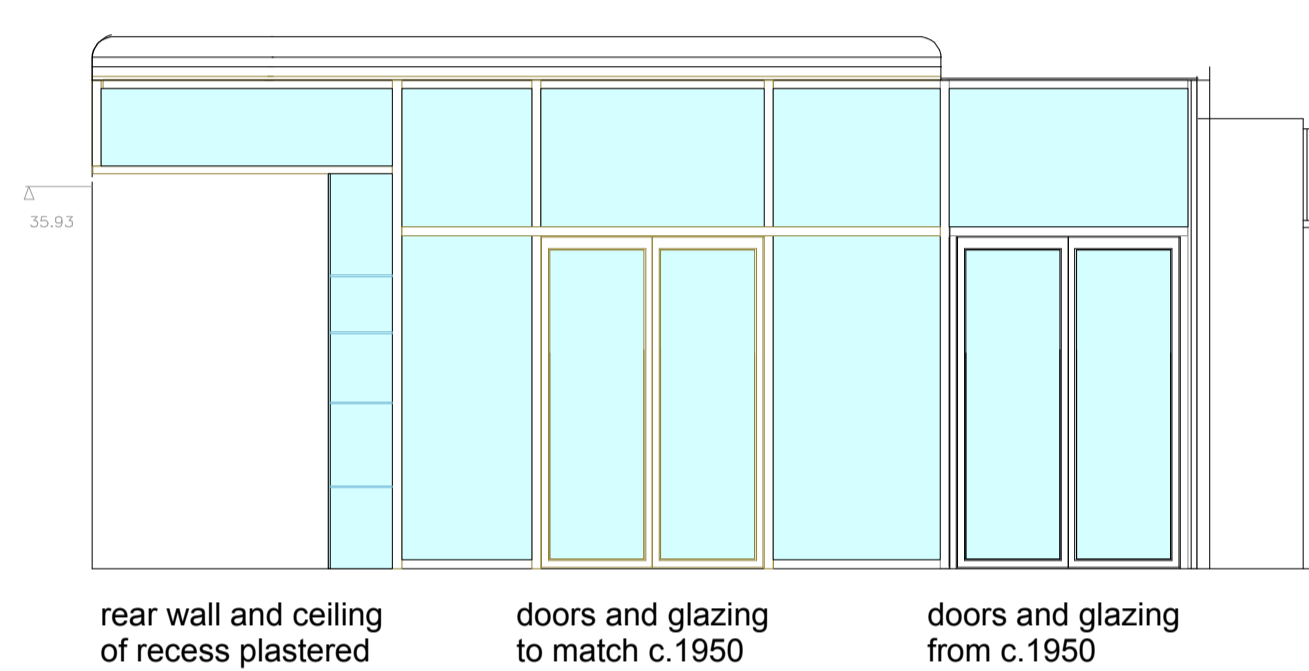
SECTION AA 1:50



SECTION BB 1:50



SECTION BB 1:50



KEY

- Indicates recent additions to mullions to be carefully removed to reinstate the 1950 proportions.
- Indicates framed fire screen c 1951 with original glass panel sizes reinstated - original black and white decoration to framing renewed.
- Indicates fire screen extended utilising sympathetic framing - new double doors to closely match existing glazed lobby doors.
- Indicates fire glass screen from beam to horizontal transom - fire rated 'ceiling' returns glazing line away from Hall door swing.



VIEW A GLAZED LOBBY (1950 - 2012 RESTORATION)



glazing divisions reinstated as per VIEW A to draught lobby - pattern extended as stair separation with double doors to match existing

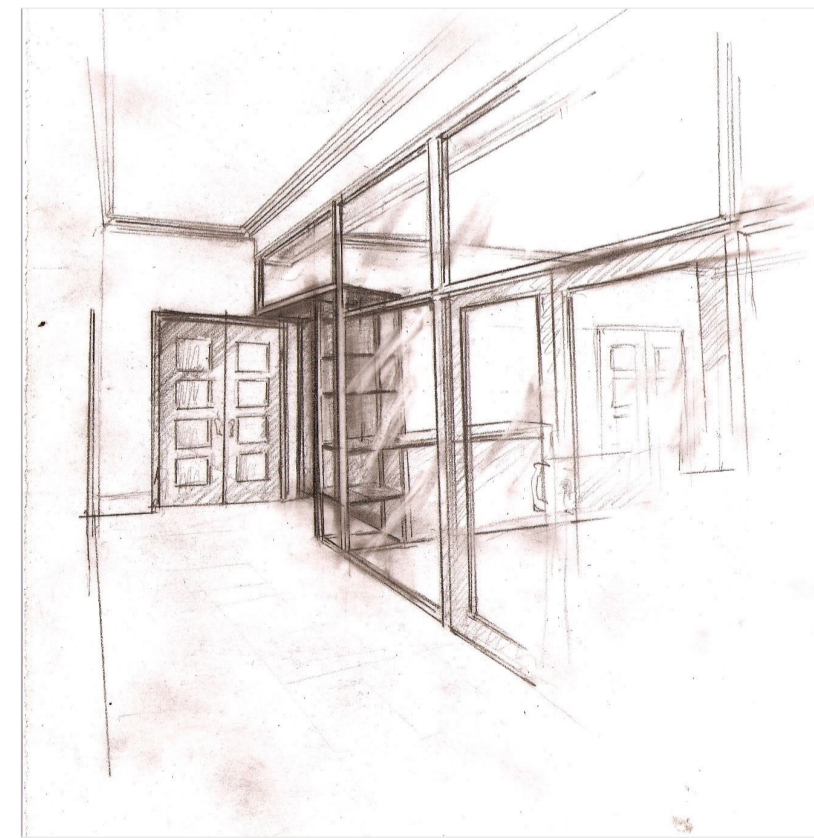
Display 'vitrine' connects new reception desk to fire screen.

Upper section of screen to run along ceiling beam.

Lower section shifting horizontally to avoid Hall door opening.

Replace current aluminium glazed entry doors to match 1950 originals re-using existing original hinges and internal lobby door details.

VIEW B



existing plasterboard fire wall junction with screen and cornice