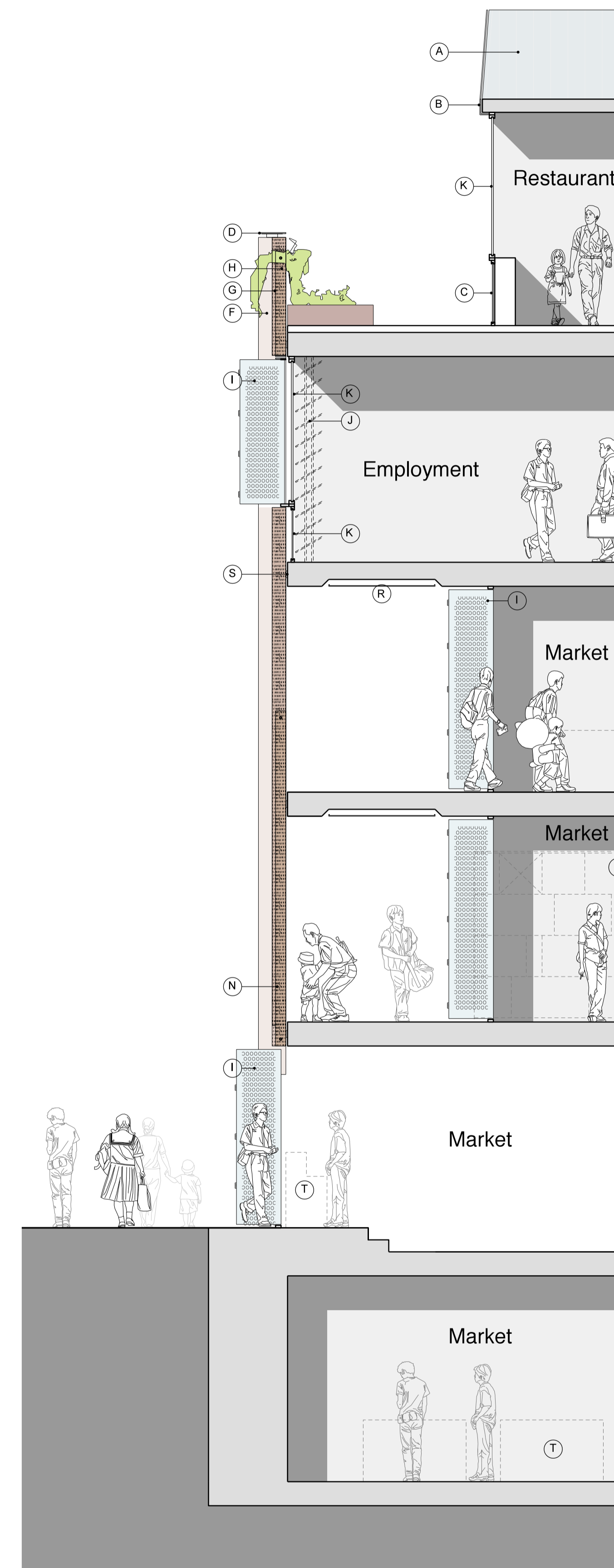


01 BUILDING A2 WEST ELEVATION



02 BUILDING A2 WEST FACADE SECTION

KEY

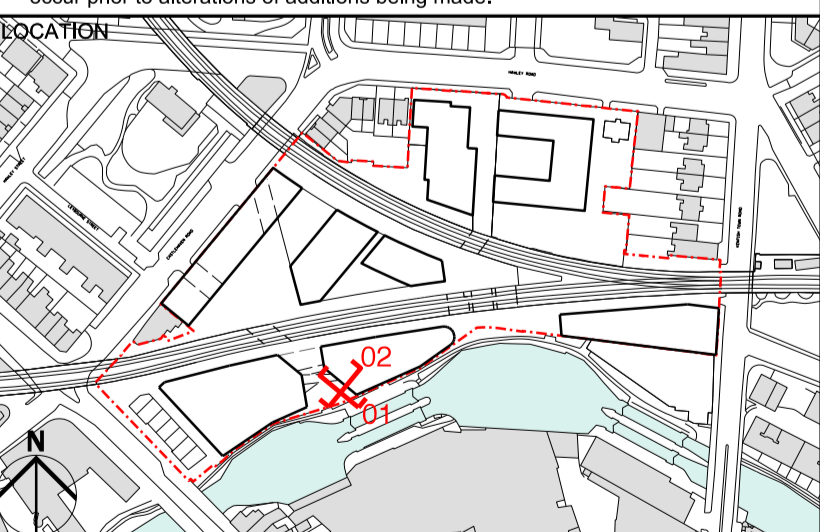
- (A) Metal roof
- (B) Metal Fascia
- (C) Solid infill panel
- (D) Metal capping plate
- (E) bracket
- (F) Primary timber fin
- (G) Secondary timber fin
- (H) Tertiary timber fin
- (I) metal shutters
- (J) Glass louvres
- (K) Glazing
- (L) metal rod
- (M) Dark brick to base
- (N) Light brick to base
- (O) Critall windows
- (P) Timber seating to reveal
- (Q) Planter (To be coordinated w/ Landscape scheme)
- (R) Recessed panel ceiling with lighting
- (S) Metal plate fixed to slab edge
- (T) Indicative market/retail fittings
- (U) Metal balustrade

A	30/10/12 BENCH AMENDED TO BE CONSISTENT WITH PLANS A_100 AND MP_100
-	31/08/12 PLANNING ISSUE

REV DATE

NOTE

1. Do not scale from this drawing, other than for Planning purposes.
2. All dimensions to be checked on site by the contractor and such dimensions to be his responsibility.
3. Report all drawing errors, omissions and discrepancies to the architect.
4. This document may be issued in an uncontrolled CAD format to enable others to use it as background information to make alterations and/or additions. In that instance the file will be accompanied by a PDF version. It is for those making such alterations and additions to ensure that they make use of current background information. AHMM Ltd accepts no liability for any such alterations or additions to the background information or arising out of changes to background information which occur prior to alterations of additions being made.



ALLFORD HALL MONAGHAN MORRIS
 ARCHITECTS Ltd
 2ND FLOOR, BLOCK C, 5-23 OLD STREET LONDON EC1V 9HL
 TEL 020 7251 5261 FAX 020 7251 5123 WEB WWW.AHMM.CO.UK

job title
 CAMDEN LOCK VILLAGE

drawing title / location
 PROPOSED BAY DETAIL: A2 WEST ELEVATION

drawn by	checked	scale	status
DG	AS	1:50@A1; 1:100@A3	PLANNING
project	zone	source	classification
12001	A	-	[00]
	drawing no.	revision	
	212	A	