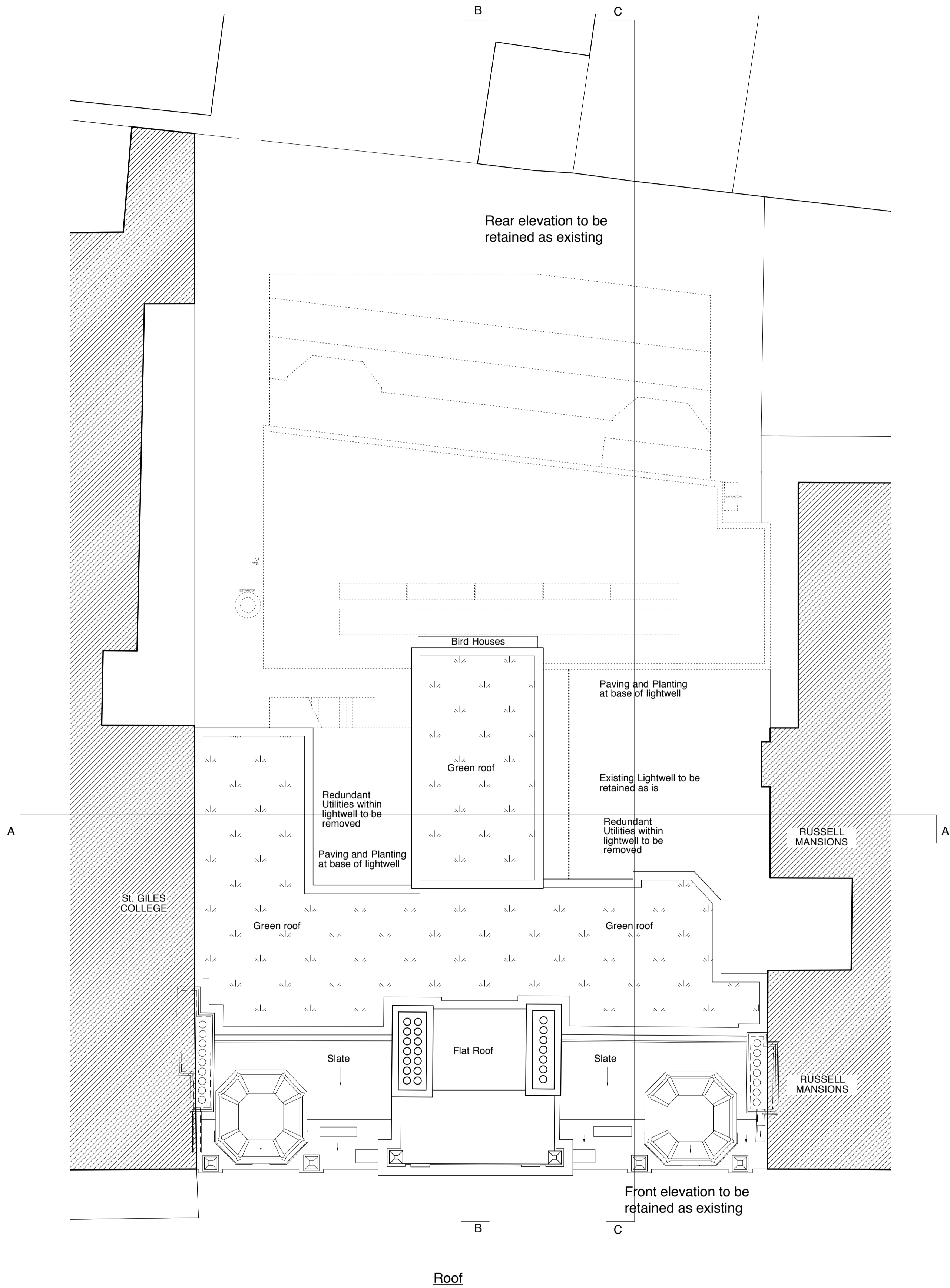


Notes:

GENERAL NOTES:

39 FLATS TOTAL - 154 BED  
12 - Accessible rooms (8%)

BUILDINGS TO INCLUDE  
COMPREHENSIVE FIRE SYSTEM  
FIRE PROTECTION - WITH SPRINKLERS  
FIRE ALARM SYSTEM - FULLY  
ADDRESSABLE



SOUTHAMPTON ROW



- No change at or near any existing light wells
- Lightwells to remain as existing

E		Planning Issue	
D	21.9.2012	Layout Updated	
C	07.9.2012	Window details added	
B	18.7.2012	General Update	
A	12.4.2012	Green roof added	
letter	date	revision	initial

date March 2012

job name

Southampton Row, London

title

Proposed - Roof Plan

scale

1:100 @ A1

job no.

1130

drawing no.

G108E