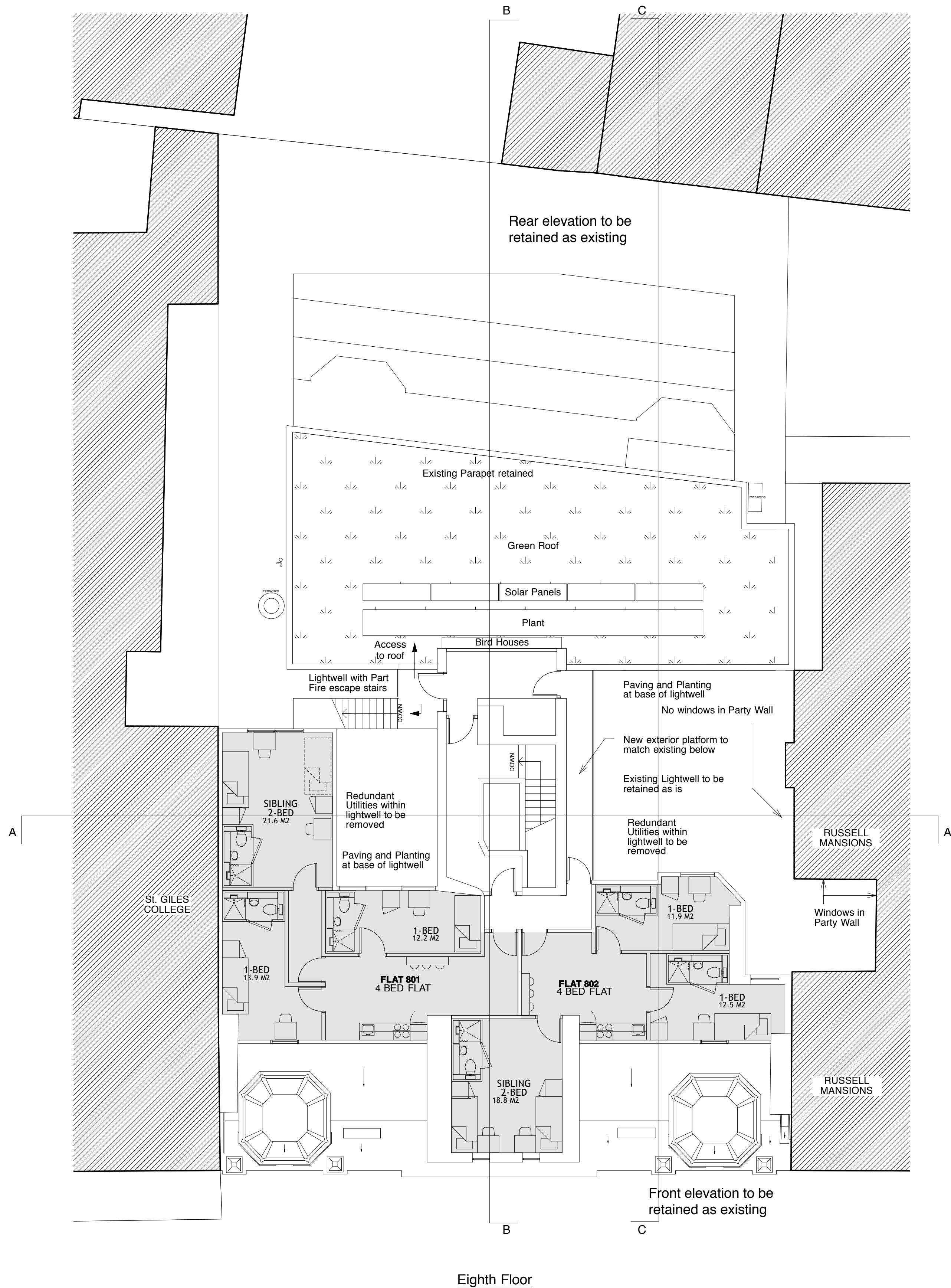
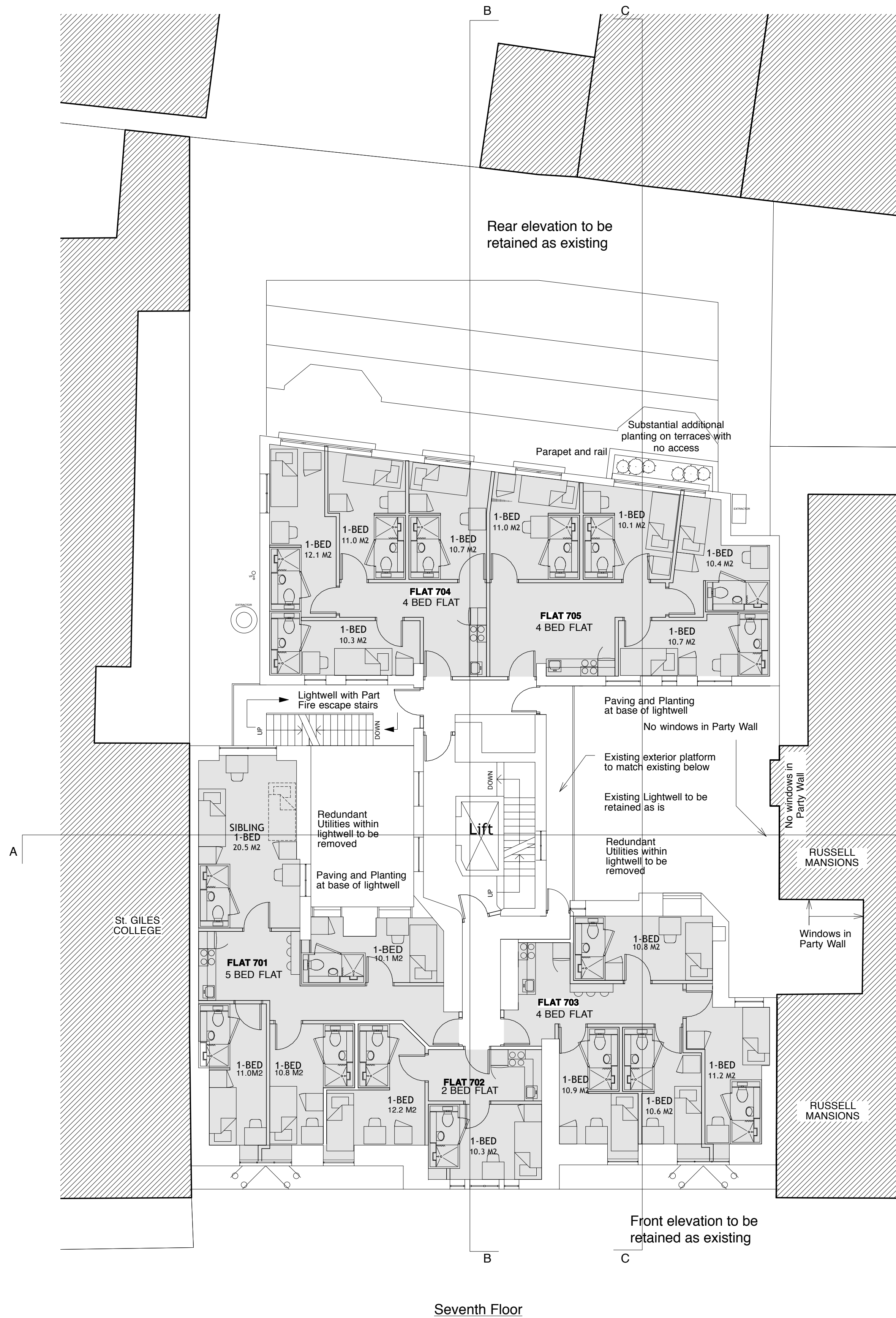


Notes:

**GENERAL NOTES:**

**39 FLATS TOTAL - 154 BED**  
**12 - Accessible rooms (8%)**

BUILDINGS TO INCLUDE  
COMPREHENSIVE FIRE SYSTEM  
FIRE PROTECTION - WITH SPRINKLERS  
FIRE ALARM SYSTEM - FULLY  
ADDRESSABLE



- No change at or near any existing light wells
- Lightwells to remain as existing

F	21.9.2012	Planning Issue
E	07.9.2012	Layout Updated
D	18.7.2012	Window details added
C	19.7.2012	General Update
B	12.4.2012	Green roof shown;
A		Common Rm added
		8th floor layout altered
letter	date	revision
		initial

date March 2012

job name

Southampton Row, London

title

Proposed - Seventh & Eighth  
Floor Plans

scale

1:100 @ A1

job no.

drawing no.

1130

G107F