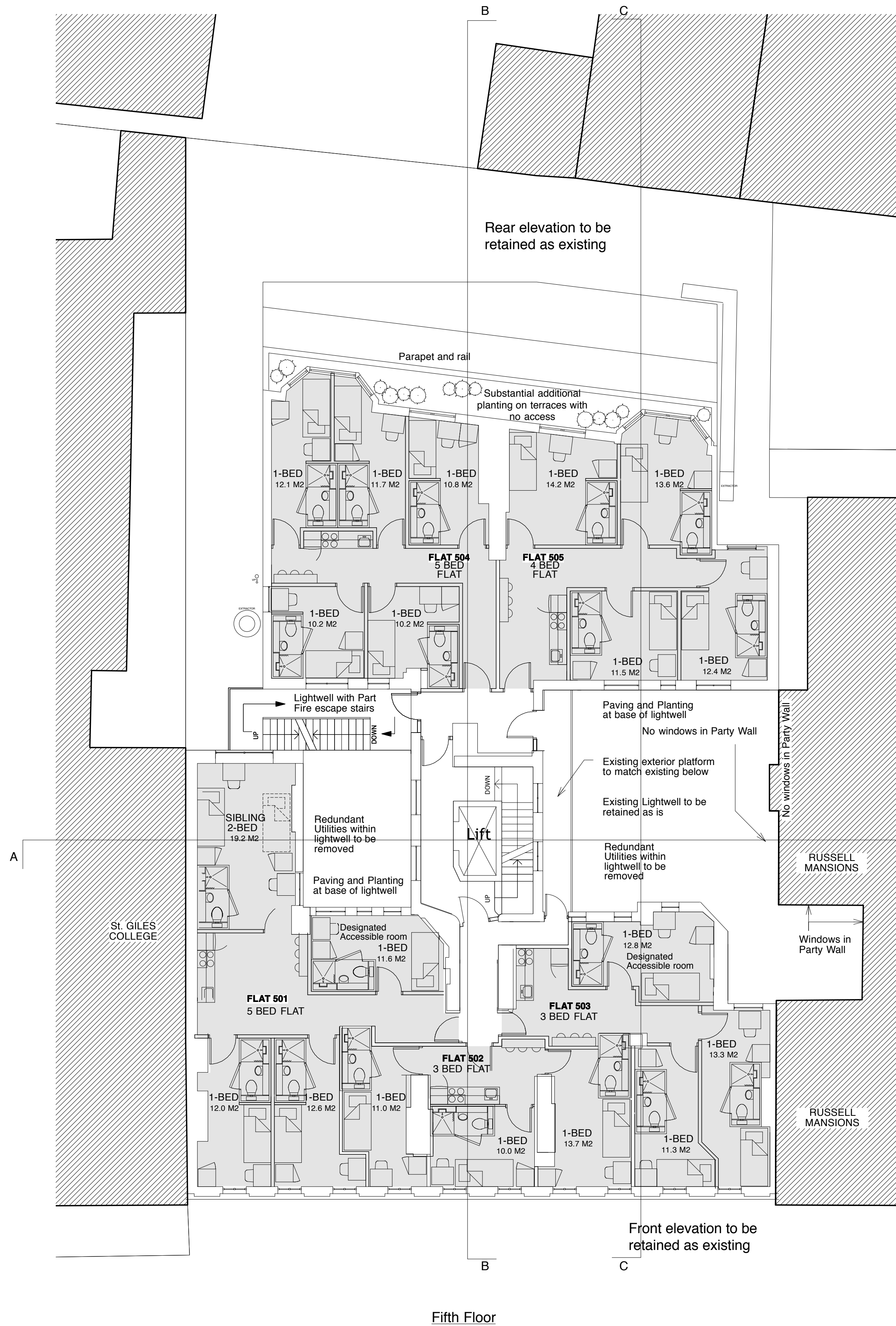


Notes:

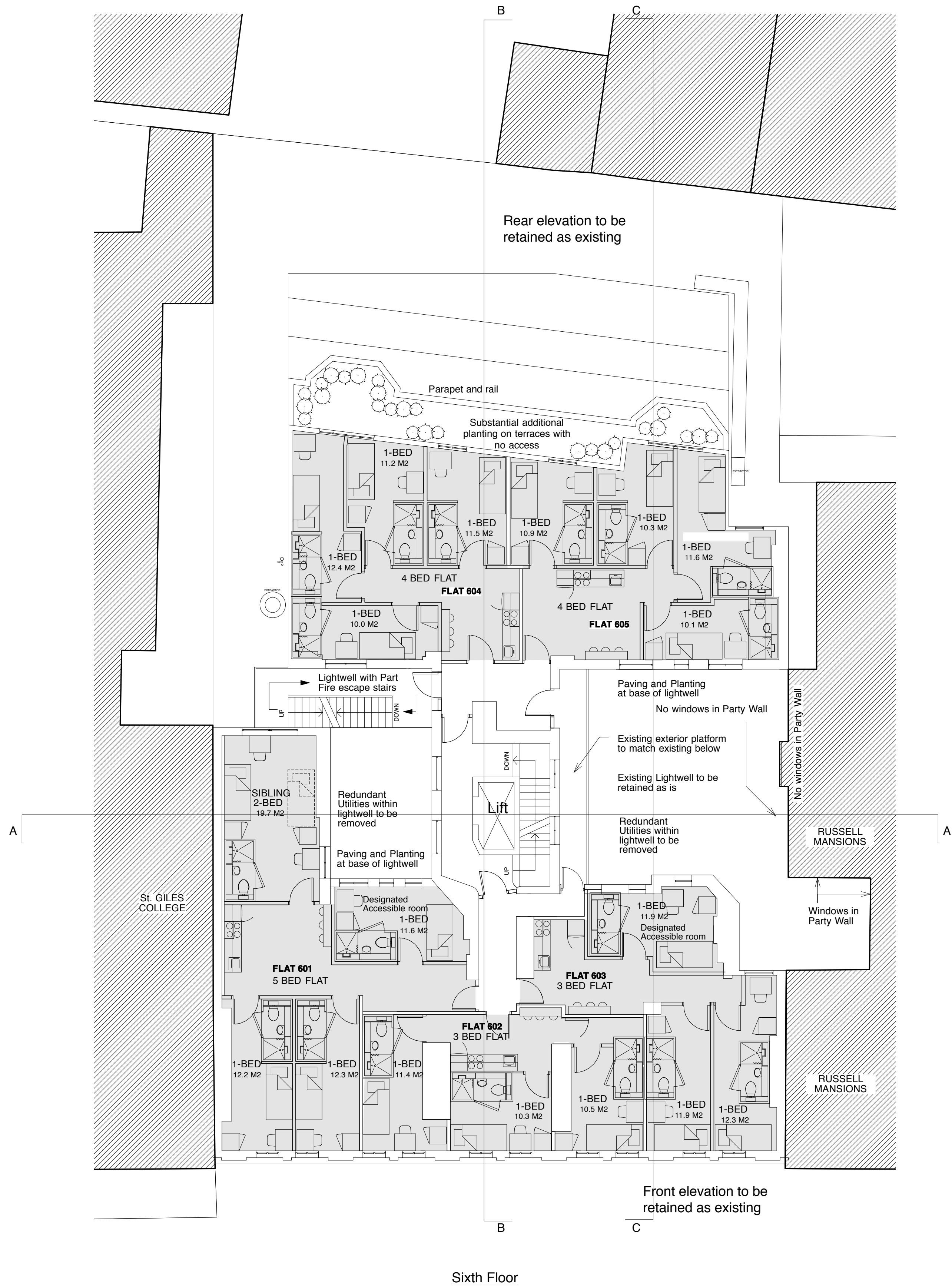
GENERAL NOTES:

39 FLATS TOTAL - 154 BED
12 - Accessible rooms (8%)

BUILDINGS TO INCLUDE
COMPREHENSIVE FIRE SYSTEM
FIRE PROTECTION - WITH SPRINKLERS
FIRE ALARM SYSTEM - FULLY
ADDRESSABLE



SOUTHAMPTON ROW



SOUTHAMPTON ROW

- No change at or near any existing light wells
- Lightwells to remain as existing

E	Planning Issue	
D	21.9.2012	Layout Updated
C	07.9.2012	Window details added
B	18.7.2012	General Update
A	13.7.2012	Room layouts revised
letter	date	revision
		initial

date March 2012

job name

Southampton Row, London

title

Proposed - Fifth & Sixth
Floor Plans

scale

1:100 @ A1

job no.

1130

drawing no.

G106E