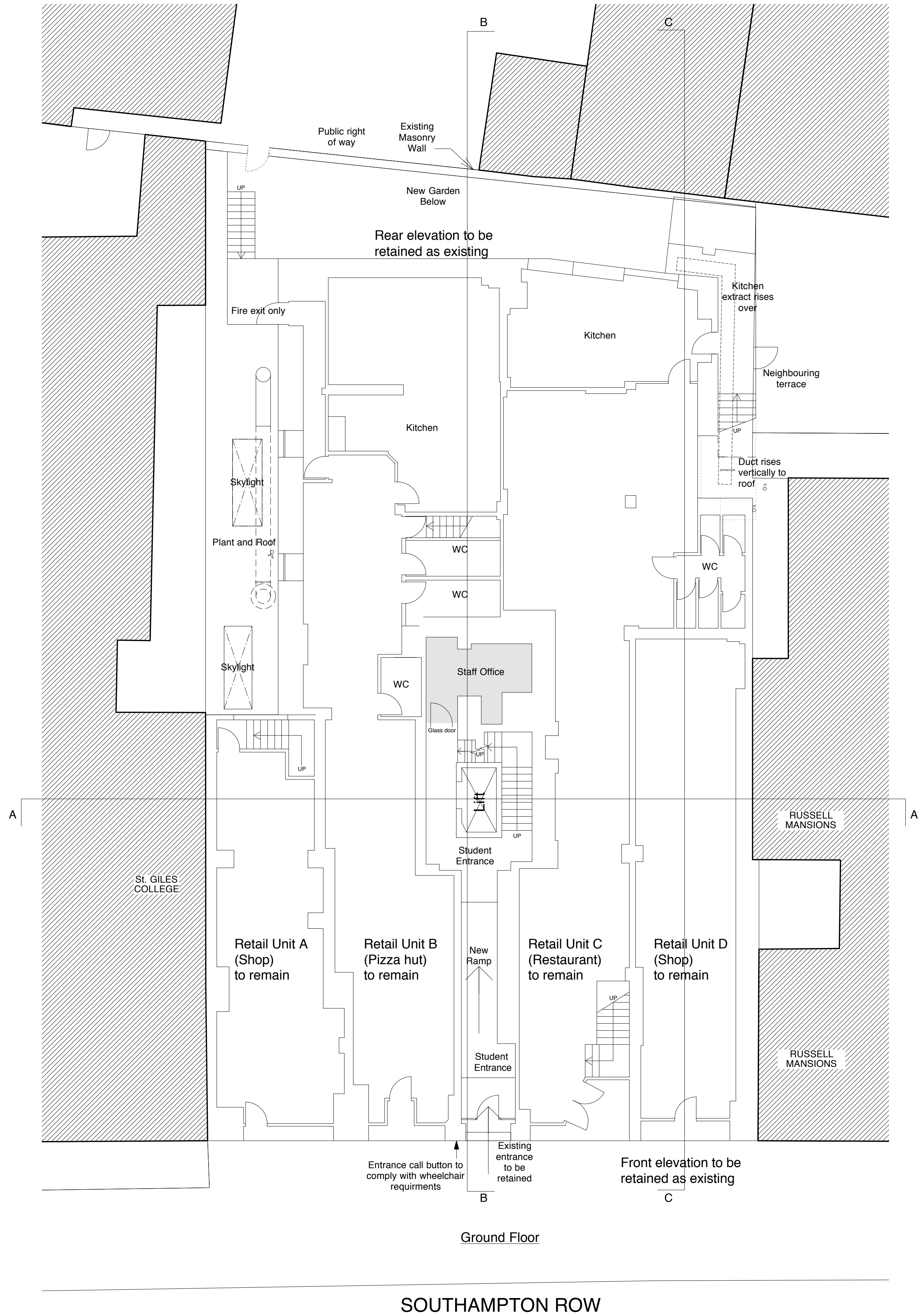
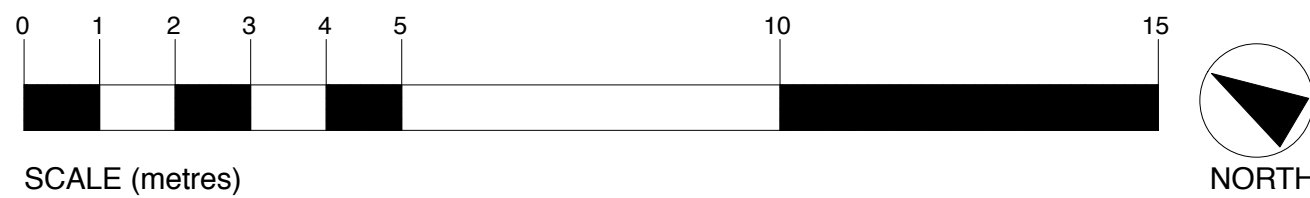
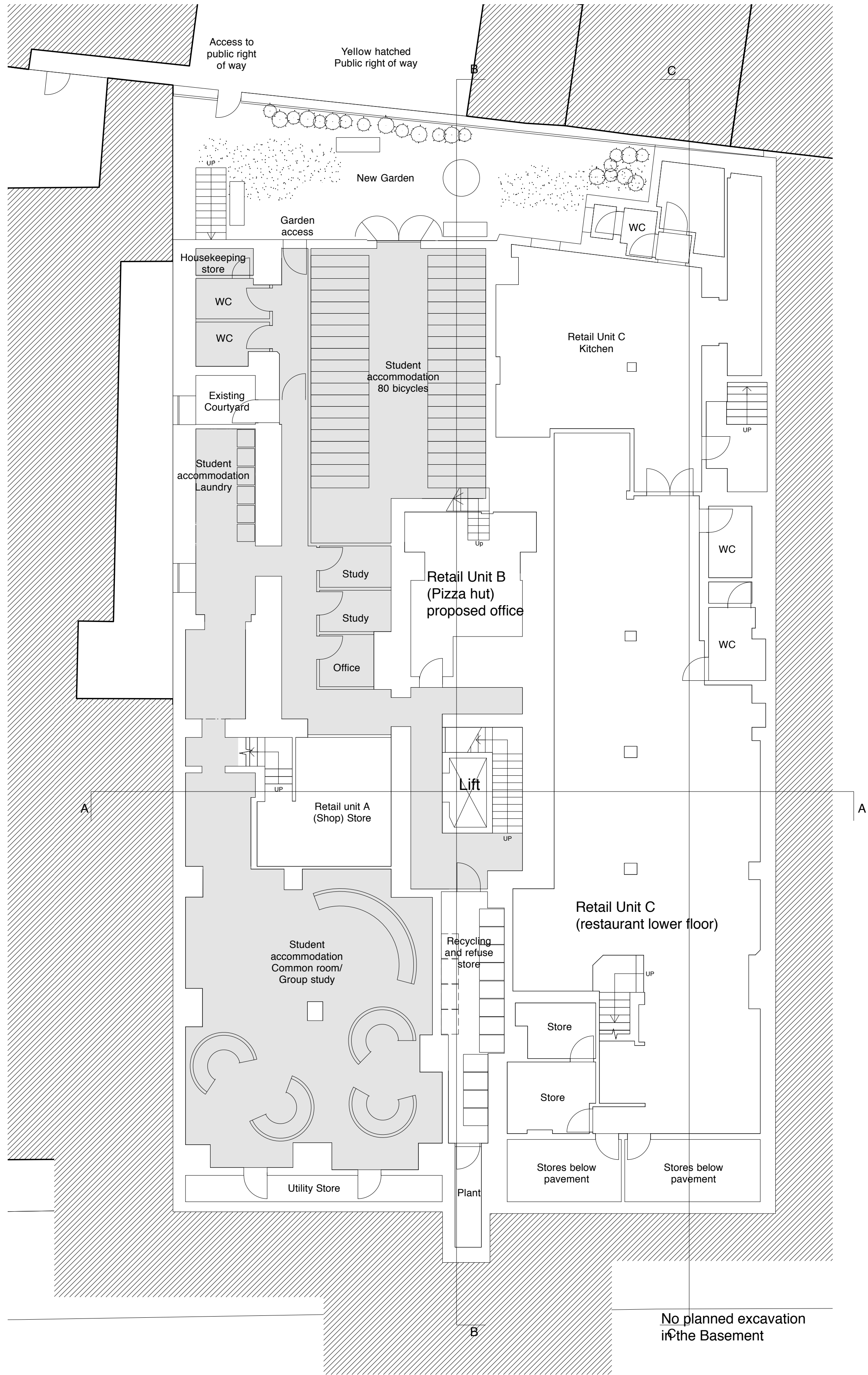


Notes:

GENERAL NOTES:

39 FLATS TOTAL - 154 BED
12 - Accessible rooms (8%)

BUILDINGS TO INCLUDE
COMPREHENSIVE FIRE SYSTEM
FIRE PROTECTION - WITH SPRINKLERS
FIRE ALARM SYSTEM - FULLY
ADDRESSABLE



- No change at or near any existing light wells
- Lightwells to remain as existing

F		Planning Issue	
E	21.9.2012	Layout Updated	
D	07.9.2012	Window details added	
C	18.7.2012	General Update	
B	13.7.2012	Drawing updated, layout revised	
A	12.4.2012	Bike store added	
letter	date	revision	initial

date March 2012

job name

Southampton Row, London

title

Proposed - Lower Ground
& Ground Floor Plans

scale

1:100 @ A1

job no.

1130

drawing no.

G103F