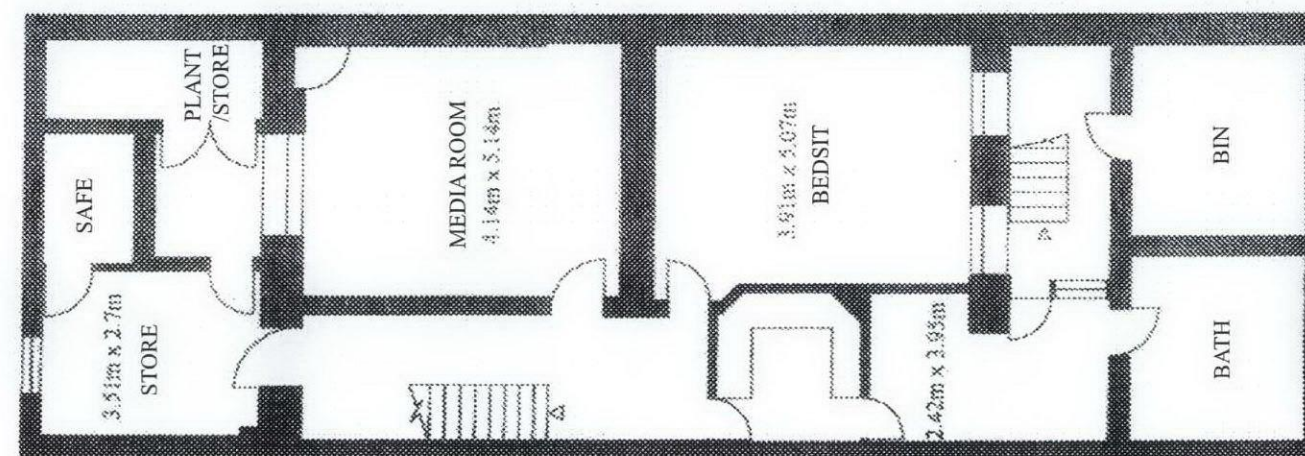


01 GROUND FLOOR PLAN



02 LOWER GROUND FLOOR PLAN

Gross Internal Floor Area for 27 John Street - 5380 Sq.ft. (500 Sq.mt approx.)

Gross Internal Floor Area for 21 John's Mews - 1206 Sq.ft. (112.1 Sq. mt approx excluding garage).

NOTES (STATUS): F. FEASIBILITY S. SKETCH DESIGN P. PLANNING B. BUILDING CONTROL D. DESIGN DEV / PRELIM M. MEASUREMENT T. TENDER C. CONSTRUCTION R. RECORD

For construction use only if status "C" and checked against current revision

All dimensions to be checked on site by contractor

Do not scale from this drawing

Unless otherwise indicated all dimensions are in millimetres

Rev	Date	Down	Auth	REVISIONS
-	18.05.2012	JKL	ACS	INITIAL ISSUE

DONALD INSALL ASSOCIATES LIMITED

19 West Eaton Place Eaton Square London SW1X 8LT Tel 020 7245 9888 Fax 020 7235 4370

Job 27 John Street & 21 John's Mews

Title Proposed Lower Ground Floor & Ground Floor Plan
(Change of Use)

CHARTERED ARCHITECTS
PLANNING CONSULTANTS
Email: architects@insall-lon.co.uk

Job	JS27	Scale	P
No.	2001	Rev.	/
Scale: A3: 1:	125		