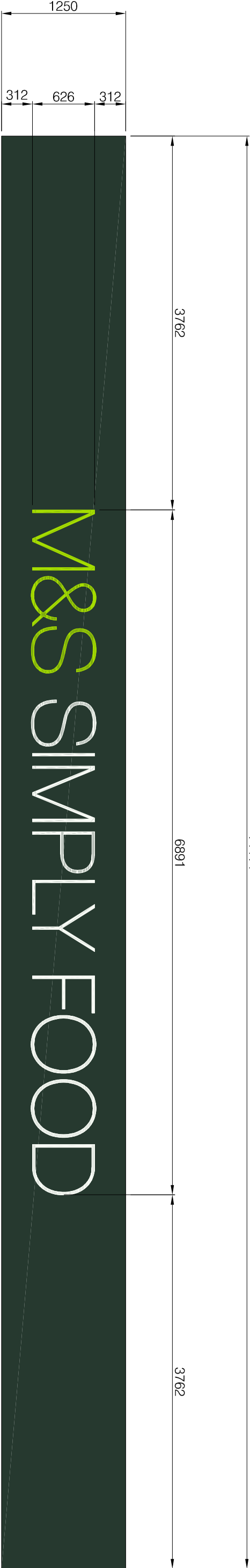


NOTES

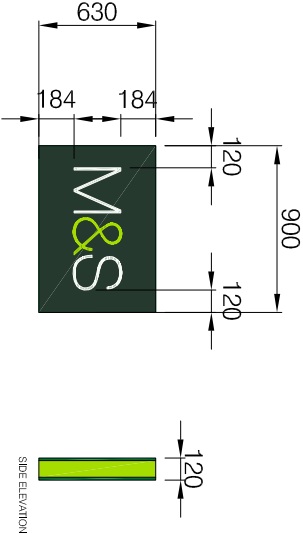
DO NOT SCALE FROM THIS DRAWING.  
DO NOT SCALE FROM THIS DRAWING.  
DO NOT SCALE FROM THIS DRAWING.  
DO NOT SCALE FROM THIS DRAWING.

ORIGINAL A1

SIGNAGE TO HAVE LETTERING FACES IN OPAL ACRYLIC. 5MM 050 & LIME ACRYLIC 5MM 6T84, ONE SURFACE SATIN. M&S LETTERING TO HAVE DESCALED STAINLESS STEEL RETURNS 100mm DEEP, STOVE ENAMELLED TO RAL 6009 100% GLOSS. METALWORK BACK PANELS FOR M&S LETTERING ARE 50mm DEEP, 100% GLOSS RAL 6009.



Sign A (1:20)



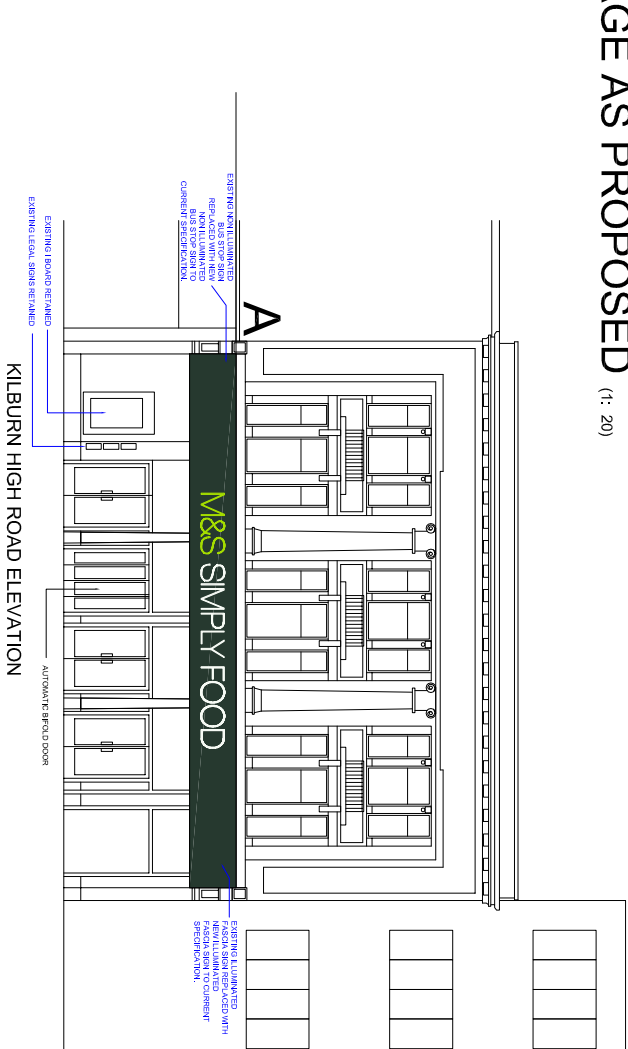
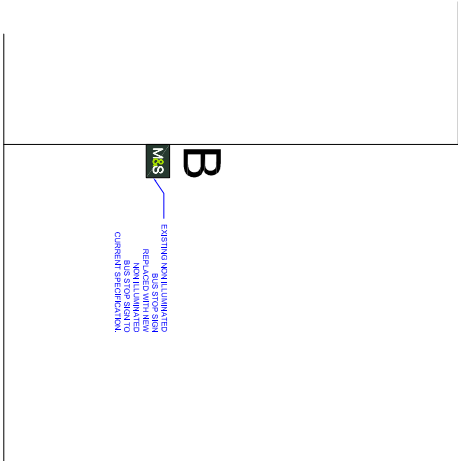
SIGNAGE TO HAVE LETTERING FACES IN OPAL ACRYLIC 5MM 050 & LIME ACRYLIC 5MM 6T84. FLUSH FACE WITH METAL USING EXACT DETAIL SHOWN ON THE GENERIC DRAWING.  
METAL WORK IS 100% GLOSS.

BUS STOP SIGN IS FACE NON ILLUMINATED.

LIME EDGE STRIP IS FACE NON ILLUMINATED

Sign B (1:20)

EXTERNAL ELEVATION SIGNAGE AS PROPOSED (1: 20)



SIGN A - INTERNALLY ILLUMINATED.

SIGN B - NON ILLUMINATED.

GENERAL NOTES

FOR SIGNAGE DETAILS REFER TO M&S GENERIC DRAWINGS:

M&SDWG-ES-01 - TYPE 1 FOR FASCAS < 20m  
3D LETTERING "M&S"

M&SDWG-ES-02 - TYPE 2 FOR FASCAS > 20m  
FLUSH FACE ILLUMINATED LETTERS "MARKSSPENCER"

M&SDWG-ES-07 - BUS STOP SIGNS

ACRYLIC:  
LIME GREEN: 5MM 6T84 SILK ACRYLIC TO FACING SIDE OR RAL 100 80 80  
WHITE: 5MM OPAL 050 ACRYLIC

METAL WORK:

M&S HERO GREEN: POWDERCOAT/ STOVE ENAMELLING TO MATCH RAL 6009 IN 100% GLOSS.  
ALL FASCA PANELS MUST BE SMOOTH AND FLUSH WITH NO BOWING OR GAPS IN JOINTS.

WHERE THE ALUMINIUM SHEETS ARE UP TO 900MM IN HEIGHT, 2MM 14 GAUGE ALUMINIUM SHOULD BE USED AS A MINIMUM.  
WHERE SHEETS ARE MORE THAN 900 HIGH, 3MM 10 GAUGE ALUMINIUM SHOULD BE USED AS A MINIMUM.  
"SLIP JOINTS" SHOULD BE USED TO JOIN ALL SIGNAGE PANELS TOGETHER. IT IS THE MAIN CONTRACTORS RESPONSIBILITY TO ENSURE THAT THE BACKROUND FOR FIXING ALL NEW SIGNAGE TOOLS COMPLETELY STABLE AND FIT

FOR PURPOSE PRIOR TO THE SIGNAGE BEING INSTALLED.  
THE SIGNAGE CONTRACTORS SITE VISIT MUST BE CARRIED OUT IN ADVANCE TO ASCERTAIN IF THERE IS ANY DOUBT ABOUT THE SUITABILITY OF THE SUBSTRATE. THOROUGH INVESTIGATIONS MUST BE MADE, EVEN REMOVING EXISTING SIGNAGE TEMPORARILY, SO THE EXTENT OF THE REPAIRS THAT ARE REQUIRED CAN BE ASCERTAINED AND REMEDIAL WORKS CARRIED OUT.

IN THE EVENT THAT REPAIRS TO MOVING FASCA PANELS ARE REQUIRED AFTER INSTALLATION, STIFFENERS MAY NEED TO BE FITTED TO INDIVIDUAL FASCA PANELS. THIS IS THE RESPONSIBILITY OF THE SIGNAGE CONTRACTOR AND IS CARRIED OUT ON A CASE BY CASE BASIS, USUALLY AS PART OF THE SNAGGING PROCESS.

EACH SIGNAGE MANUFACTURER MUST COMPLETE THEIR OWN SET OF PROJECT SPECIFIC DESIGN

DRAWINGS FOR APPROVAL BY THE M&S DESIGN TEAM.  
THE DETAILS MATERIAL FINISHES AND QUALITY EXPECTED ARE CLEARLY INDICATED. THESE MUST BE ADHERED TO WITHOUT DEVIATION. IT WILL BE ASSUMED BY M&S THAT ALL MANUFACTURERS ARE AWARE OF THIS SPECIFICATION AND THAT IS IT BEING FOLLOWED EXACTLY.  
NO DEVIATIONS WILL BE ACCEPTED UNLESS AGREED IN ADVANCE BY THE M&S DESIGN TEAM.

1 12.11.12 NOTE RE ILLUMINATION OF FASCA SIGN REVISED. DAD FOC

REV	DATE	DESCRIPTION	DRAWN	CHECKED
-----	------	-------------	-------	---------

LOCATION: FASCA



STORE NAME  
KILBURN

STORE NUMBER  
0563

COUNTRY  
UNITED KINGDOM

PROJECT  
M&S SIMPLY FOOD  
CONCEPT STORES

EXTERNAL ELEVATION  
SIGNAGE DETAILS

CONSULTANT  
LEWIS AND HICKEY LTD

CONSULTANT LOGO

	11 Ladbroke Road Golders Uxbridge Middlesex UB8 3NY	01895 500000 info@lewisandhickey.com
--	---	---

SCALE	PAPER SIZE	DATE	DRAWN	CHECKED
1:20	A1	16.07.12	DDW	DO
PROJECT No	CONSULTANT PROJECT No	DRAWING No	STATUS	REV
KIL011	G3940	120	C	1

DISCIPLINE CODE  
A ARCHITECTURE

EXTERNAL ELEVATIONS AS PROPOSED (1: 100)