

Notes

These drawings are strictly copyright and are not to be used, printed or copied in any form unless expressly permitted by ASB Architects. Any scale indicated on the drawing is only correct provided the drawing is printed at the original "Sheet Size" field. This is typically A1 or A3, printed without reduction, @ 100%

This drawing may include information shown in colour as indicated by the "Printing" field. If the drawing is received incorrectly please refer to the sender or Architects.

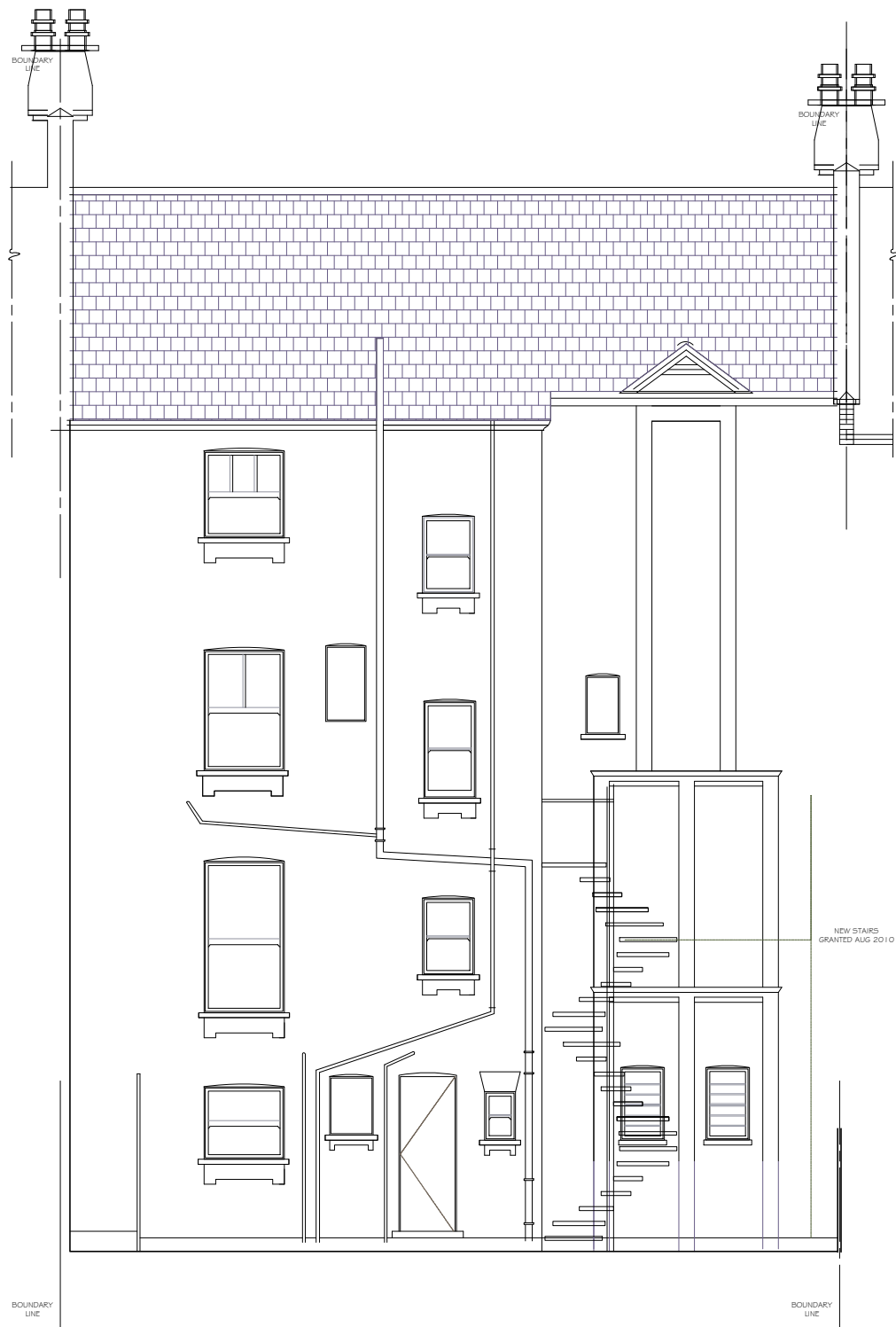
Do not scale from these drawings. Refer to figured dimensions only and, where these are missing or cannot be inferred from the given dimensions, refer to the Architect for instruction.

Inform the Architect as soon as possible of any discrepancies found on site.

This drawing is to be read in conjunction with the structural engineers' drawings, all other layout and detail drawings together with the Schedule of Works and Specification.

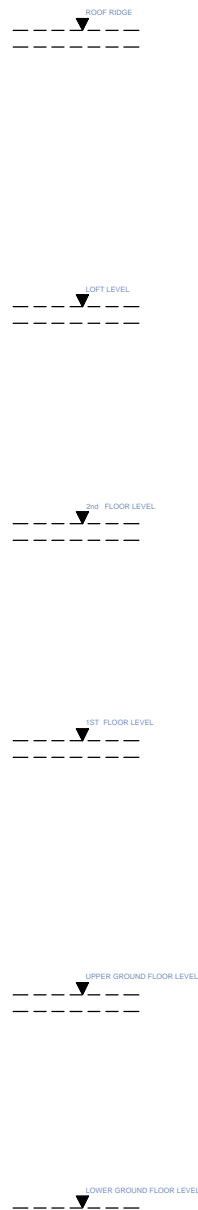


PROPOSED REAR ELEVATION
WEST ELEVATION



EXISTING REAR ELEVATION
WEST ELEVATION

0 500 1000 3000 mm



REVISION

A - 8 OCTOBER 2012
Drawing Amended
B - 1st NOVEMBER 2012
Drawing Amended
C - 6th NOVEMBER 2012
Drawing Amended
D- 9th NOVEMBER 2012
Drawing Amended

Rev.	Date	Notes

ASB ARCHITECTS

215 West End Lane West Hampstead London NW6 1XJ
T: 020 7431 5221 F: 02074315114 E: amos@asbarchitects.com

Project **10 GOLDHURST TERRACE NW6**

Drawing **EXIST and PROPOSED REAR ELEVATION**

Dwg status	-	Date ©	OCTOBER 2012
Project Ref	256/ A1	Printing	-
SCALE	1: 50	Sheet size	A3



Drg No
06

Rev.
D

PLANNING
APPLICATIONS' SET