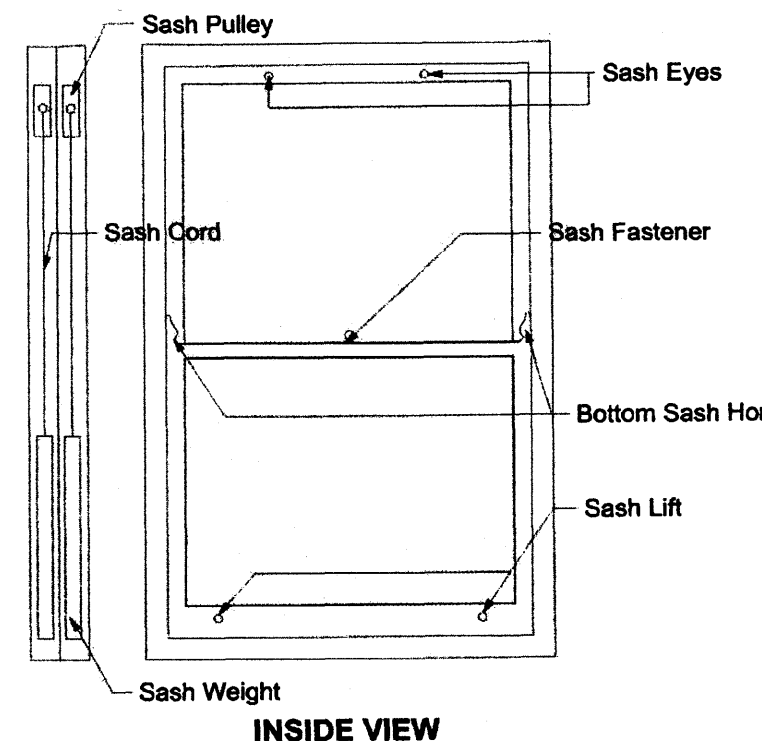
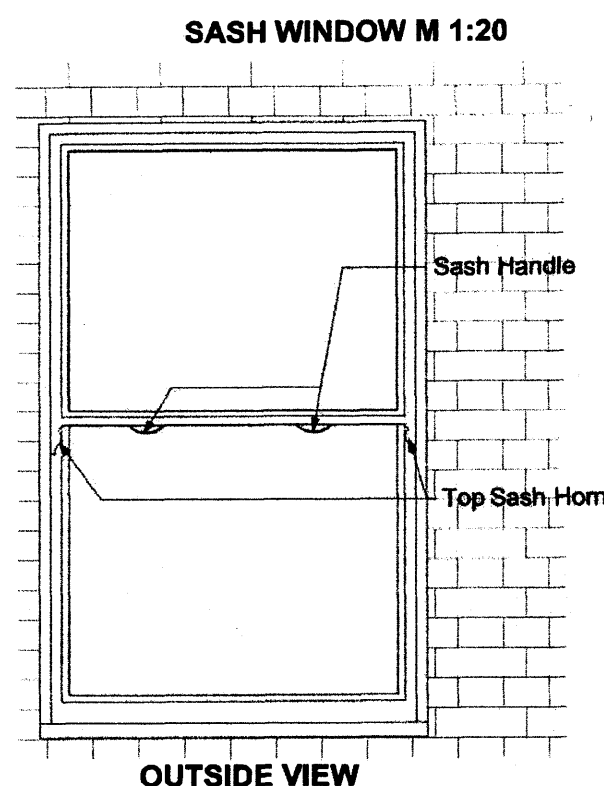
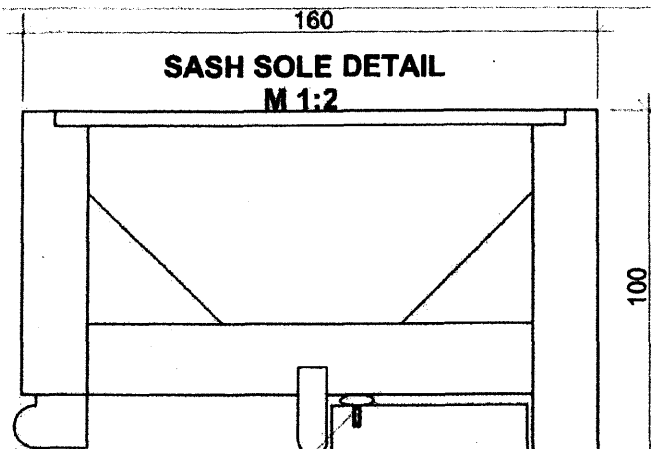


RECEIVED
23 NOV 2012



WINDOW TYPE: Sash windows

Location: N/A

Material: hardwood

Profile: TBC

Operation: traditional waxed cotton sash cord with sash lead weights and heavy duty brass pulley wheels

Glazing: 24mm double glazed units, 4mm soft coat/swissbar/4mm clean glass

Finish: factory sprayed 3 coat micro porous paint finish colour White

Ironmongery: TBC

Trickle vent: TBC

Fastener: TBC

Sash Lift: TBC

Stop bolt: TBC

Weatherseals: TBC

Sash Horns: top and bottom sash TBC

Sill extension: TBC

Internal sills: TBC

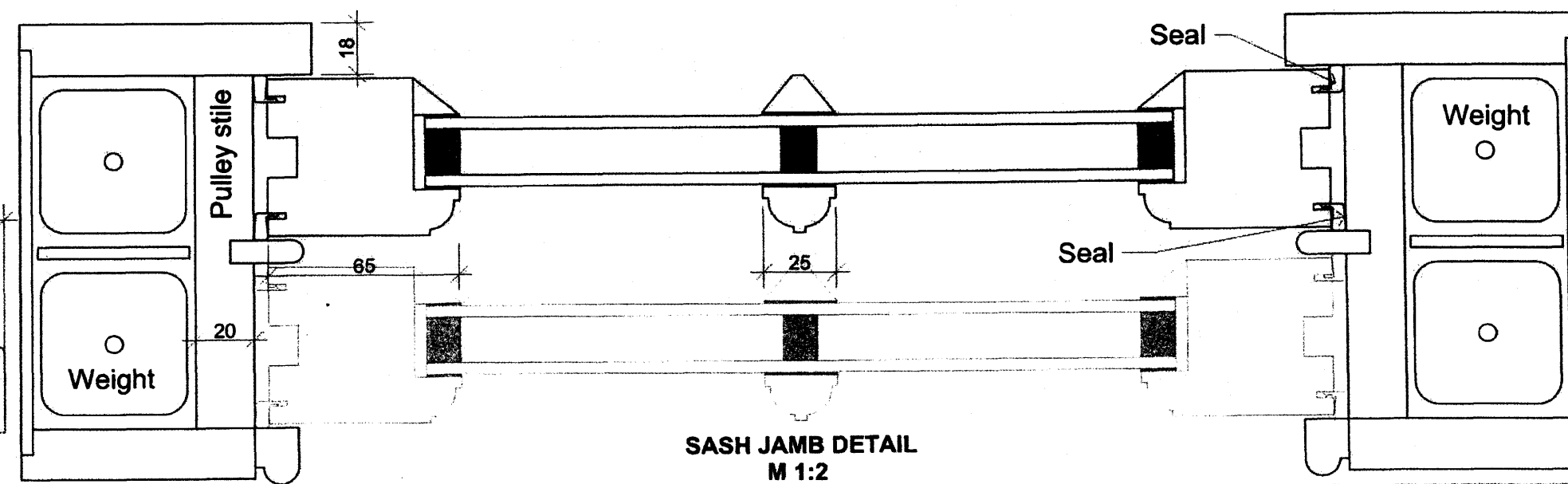
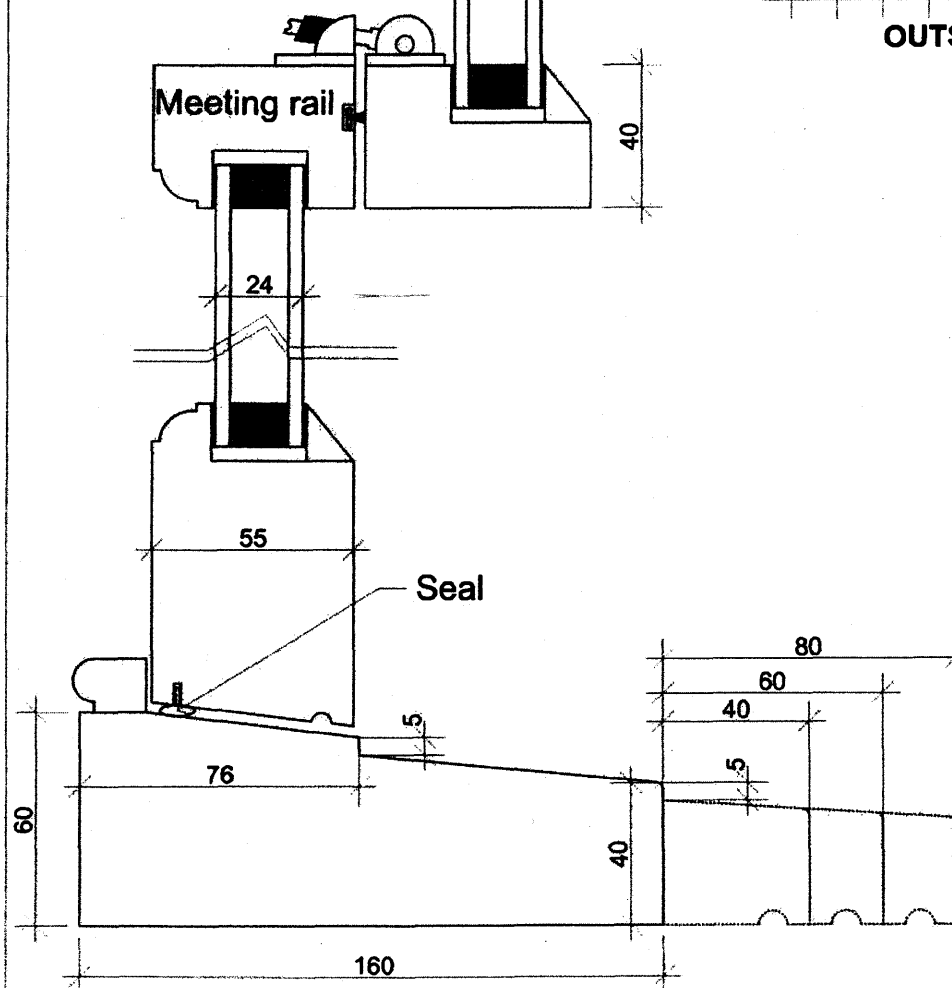
Additional information:

Window size: W x H

Internal opening size:

External opening size:

Quantity:



darma

28 Gorst Road
Park Royal
London NW10 6LE
T.020 88380390
info@darma.co.uk
www.darma.co.uk

COPYRIGHT

This drawing and details contained therein are copyright and are not to be reproduced without the permission of Darma. All dimensions relating to actual site conditions are to be checked on site prior to any works being commissioned or executed. Contractors are not to scale from this drawing and should refer any query in respect of dimensions to the designers.

PROJECT

**DARMA
LONDON
POSTCODE**

TITLE

SASH WINDOW

ISSUE

SCALE
1:1 / 1:100 A1
DWG NO.
01

DATE
12/11/2012
DRAWN BY