

KEY PLAN (SCALE 1:500)

DETAIL A

DETAIL B

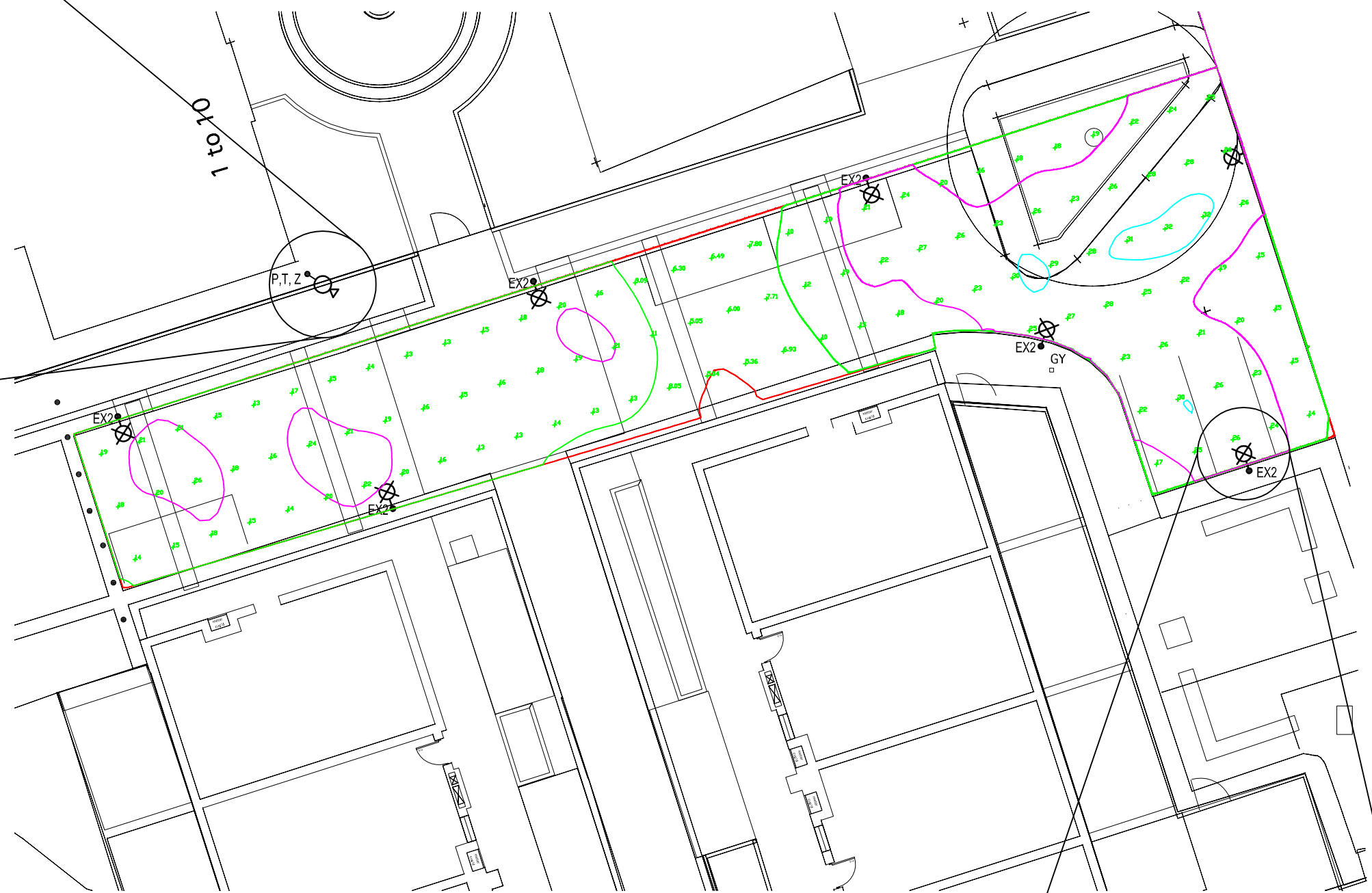
DETAIL C

DETAIL D

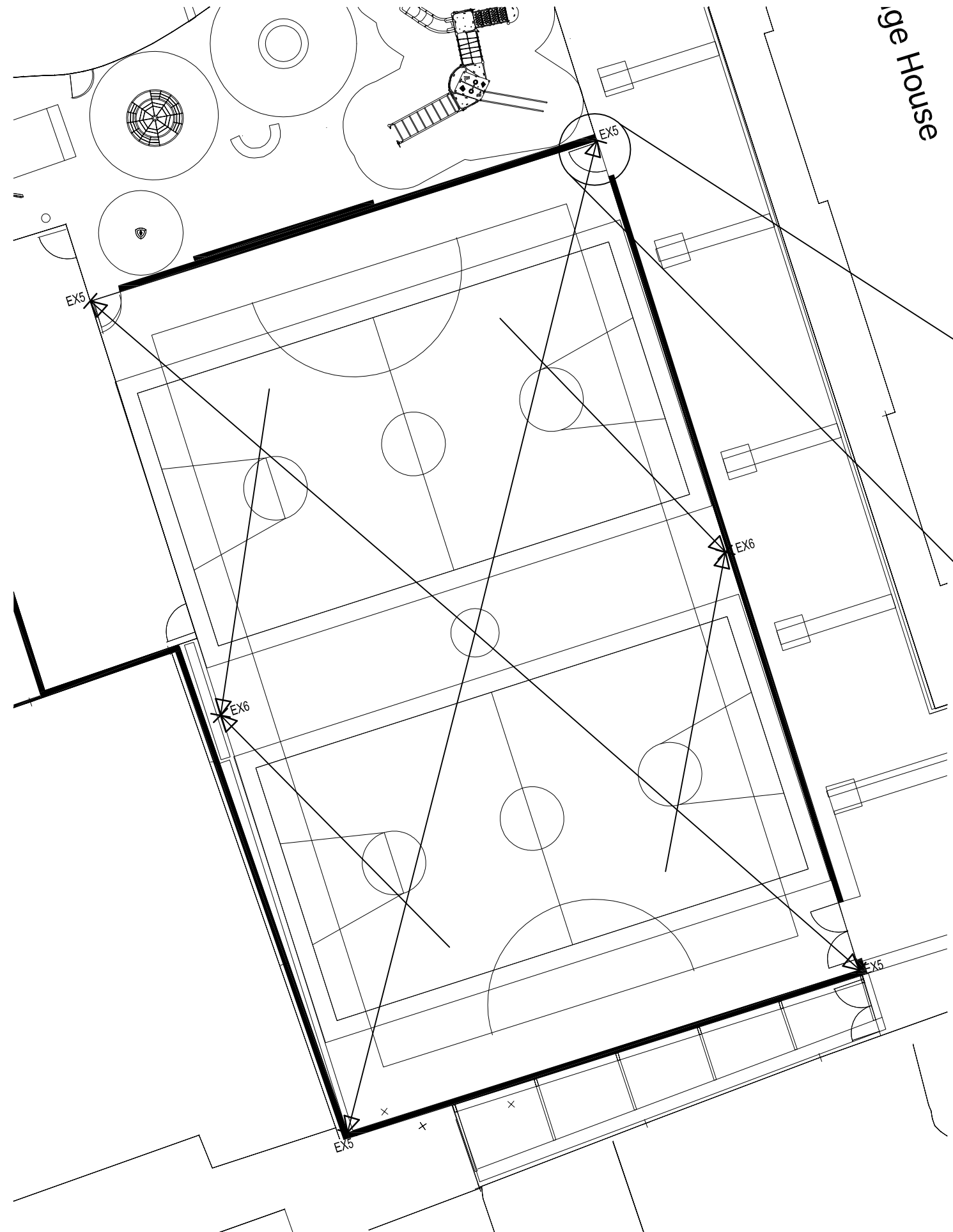


IMAGE OF PROPOSED DOME TYPE CCTV CAMERA ON TOP OF PROPRIETARY COLUMN

DETAIL C : EXAMPLE LIGHTING DESIGN FOR ROADWAY INCLUDING ISOLUX PLOT



DETAIL D: EXAMPLE OF LIGHTING DESIGN FOR ARCHWAY INCLUDING ISOLUX PLOT



DETAIL A : LIGHTING DESIGN FOR 'MUGA' INCLUDING AIMING POINTS (SEE DETAILS A1 & A2 BELOW FOR ILLUMINANCE PLOTS)

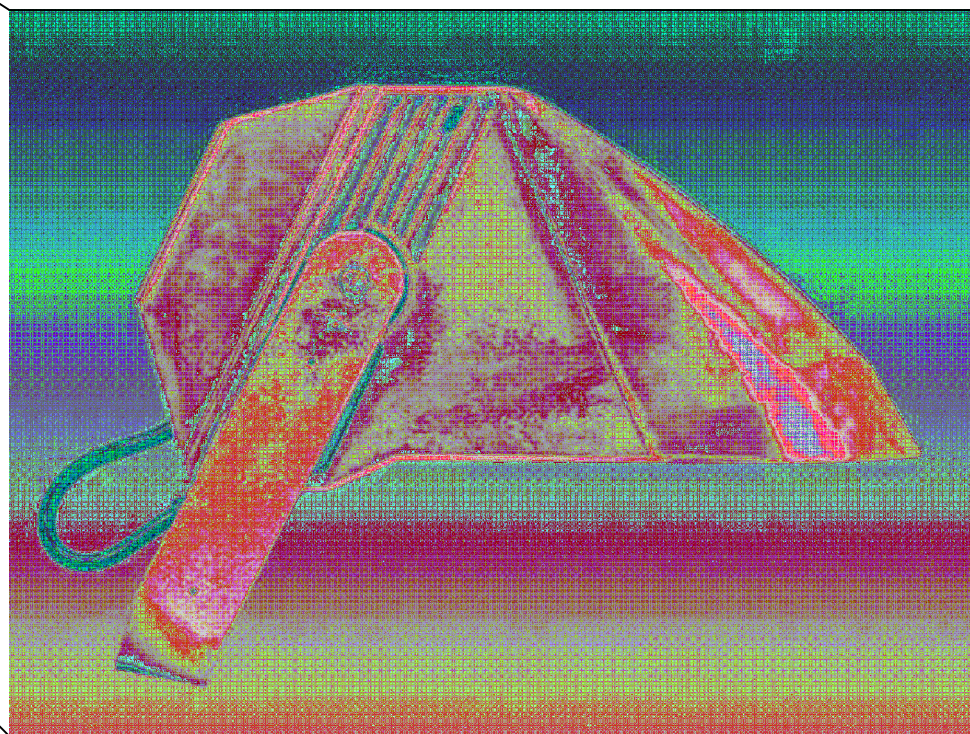
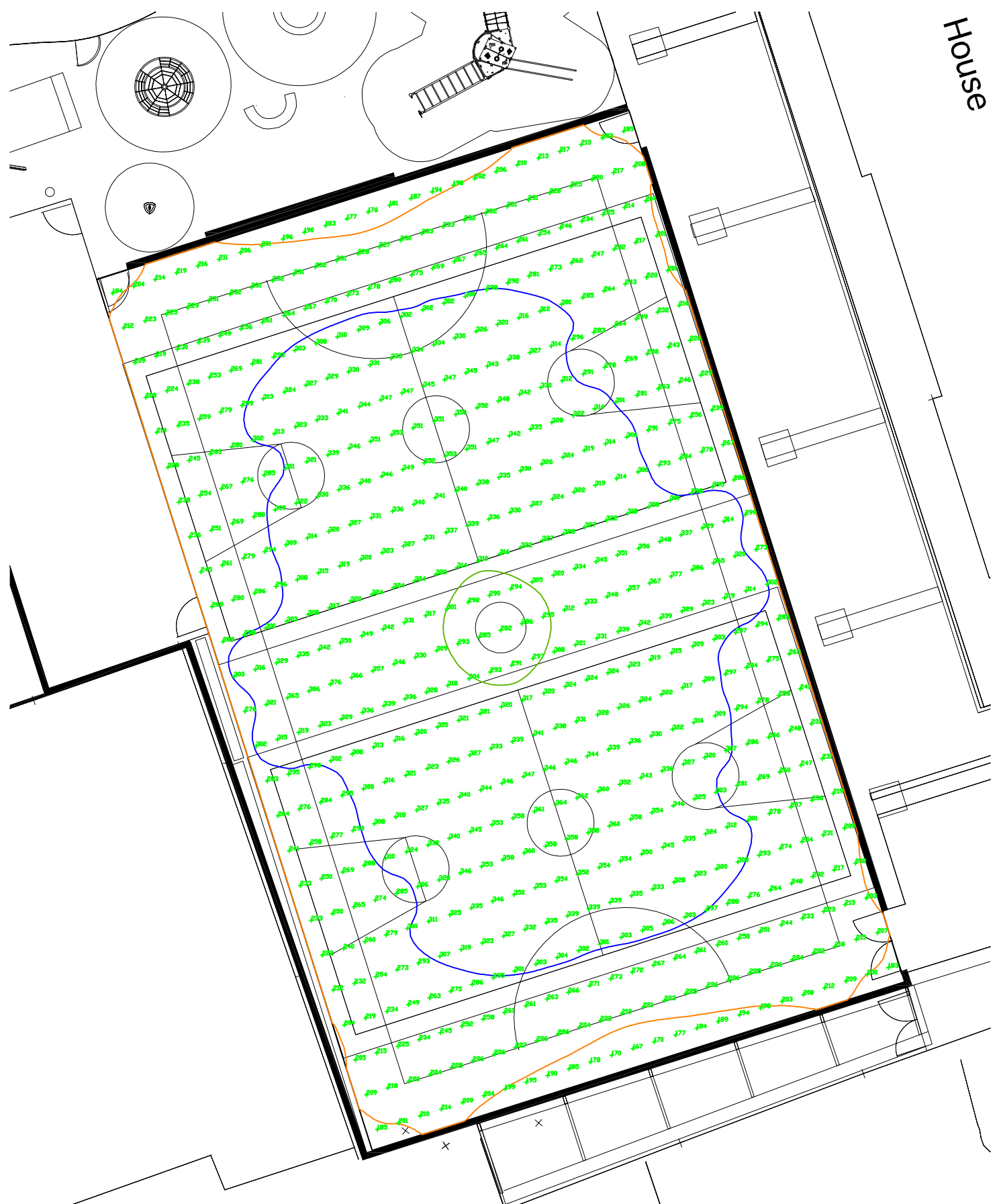


IMAGE OF PROPOSED EX5 TYPE LUMINAIRE

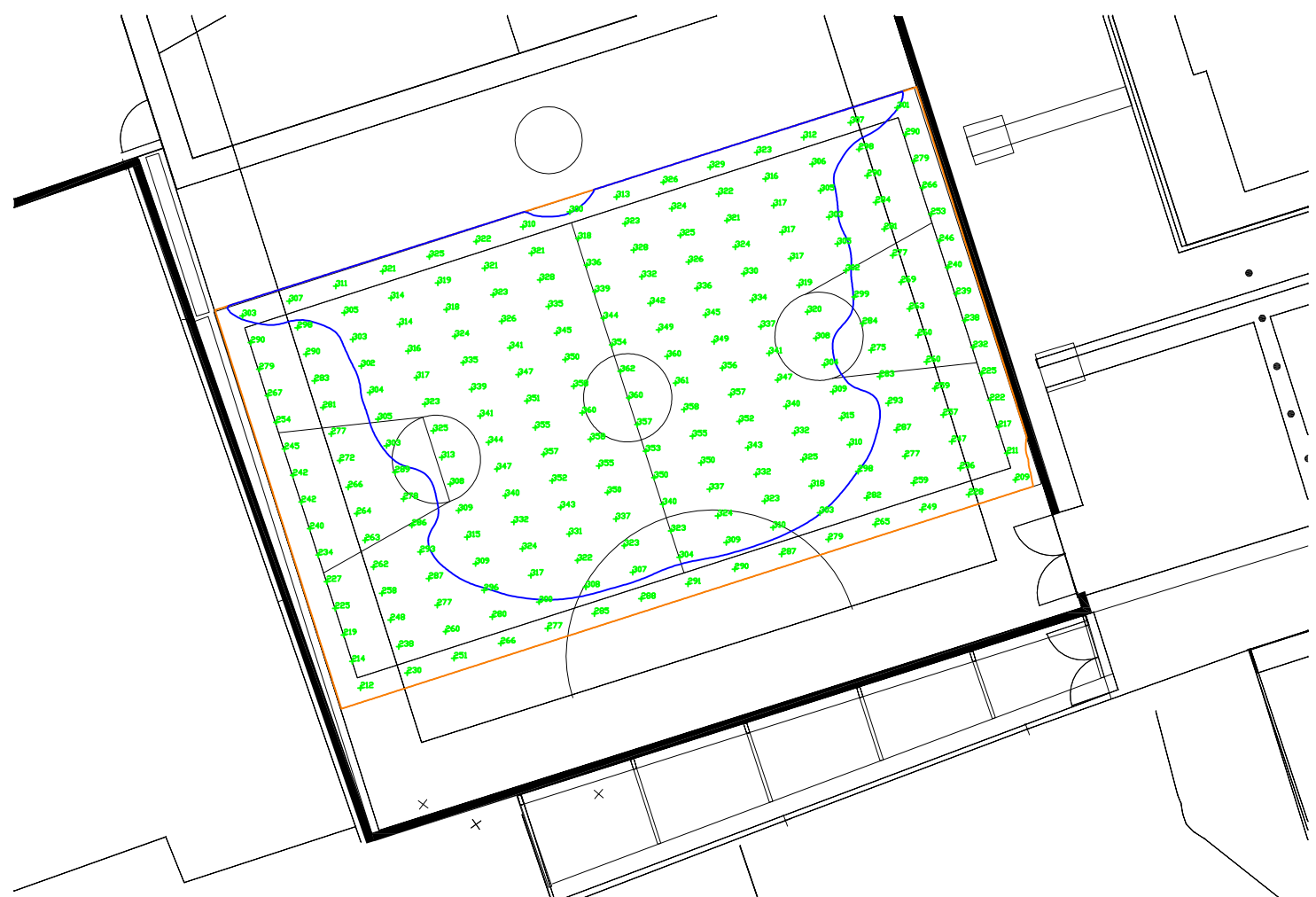


IMAGE OF PROPOSED EX2 TYPE LUMINAIRE

DETAIL B : EXAMPLE LIGHTING DESIGN FOR PEDESTRIAN WALKWAY INCLUDING ISOLUX PLOT



DETAIL A1 : ISOLUX PLOT FOR MUGA FOOTBALL PITCH



DETAIL A2 : ISOLUX PLOT FOR MUGA BASKETBALL COURT 1

TABLE OF PROPOSED CRITERIA Vs ACTUAL/CALCULATED RESULTS

AREA	LUX LEVEL, Eav (LUX)	LUX LEVEL REQ'D, Eav (LUX)	UNIFORMITY (Uo)	UNIFORMITY REQ'D (Uo)	OBTRUSIVE LIGHT, ULR (%)	OBTRUSIVE LIGHT ALLOWED, ULR (%)	REFERENCE FOR CRITERIA
MUGA FOOTBALL	309	200	0.75	0.6	0.02	15	CIBSE LG4 P.13 & P.24
MUGA BASKETBALL	303	200	0.65	0.6	0.02	15	CIBSE LG4 P.13 & P.24
ARCHWAY	50	50	0.65	0.4	-	-	SLL CODE FOR LIGHTING P.96 TABLE 3.5 REF 3.5.4
ROADWAY	18	10	0.25	0.25	-	-	SLL CODE FOR LIGHTING P.113 TABLE 4.7, CLASS S2
PEDESTRIAN WALKWAY	15	5/10	0.25	0.25	-	-	SLL CODE FOR LIGHTING P.96 TABLE 3.5 REF 3.5.4

- LEGEND
- POST - TOP MOUNTED LANTERN WITH NARROW OPTIC ON 10M COLUMN CIV LED LAMP SOURCE
 - POST - TOP MOUNTED LANTERN WITH WIDE OPTIC ON 10M COLUMN CIV LED LAMP SOURCE
 - POST - TOP MOUNTED TWIN-HEAD LANTERN WITH ASYMMETRIC OPTIC ON 10M COLUMN CIV LED LAMP SOURCE
 - WALL MOUNTED BLACK-HEAD LUMINAIRE CIV 200W COMPACT FLUORESCENT LAMPS
 - FLOODLIGHT MOUNTED ON 10M COLUMN CIV 1x1000W METAL HALIDE LAMP
 - TWIN-HEAD FLOODLIGHT MOUNTED ON 10M COLUMN CIV 1x1000W METAL HALIDE LAMP WITH EACH LANTERN
 - BRACKET ARM/WALL MOUNTED LANTERN WITH WIDE OPTIC AT ARCH CIV LED LAMP SOURCE (USED WITHIN ARCHWAYS)
 - FULLY FUNCTIONING PTZ CCTV CAMERA ON 10M COLUMN CIV INFRARED LAMP FOR NIGHT TIME VIEWING
- NOTES
- FINAL LOCATION OF ALL CCTV LUMINAIRES AND ASSOCIATED STREET FURNITURE / BMV SHALL BE CO-ORDINATED BY ARCHITECT.
 - ALL LUMINAIRES AND CCTV EQUIPMENT TO BE PRE-MINI RATED.
 - CALCULATION PLANES FOR ILLUMINANCE LEVELS SHOULD BE REGARDED AS GROUND LEVEL.

P	16.11.12	ISSUE FOR COMMENT	AL	CL	GL	SJO
REV	DATE	DESCRIPTION	ALT	DO	ORIG	APP

tga CONSULTING ENGINEERS

a sustainable future... engineered

TGA Consulting Engineers LLP, The Rivergreen Centre, Aykley Heads, Durham City, DH1 5TS.
E: info@tgace.co.uk T: 0191 3862314

Project
BOURNE ESTATE (SOUTH) REGENERATION

Title
ELECTRICAL ENGINEERING SERVICES
PROPOSED EXTERNAL LIGHTING & CCTV

Architect
MATTHEW LLOYD ARCHITECTS LLP

Client
TIBBALDS PLANNING & URBAN DESIGN LTD

Drawing Number	Revision	Scale
7239E(60)005-2	P	A0 1:200 A2 - A4 -

Path
S:\7239\11B\7239E(60)005-2

Architects Drawing Reference
440-100B

Drawn	DO Check	Originator	Approved
AL	CL	CL	SJO

Date	Status
NOVEMBER 2012	PRELIM

This drawing is the copyright of TGA Consulting Engineers LLP and must not be reproduced without their permission.
This drawing shall not be scaled for construction purposes.