

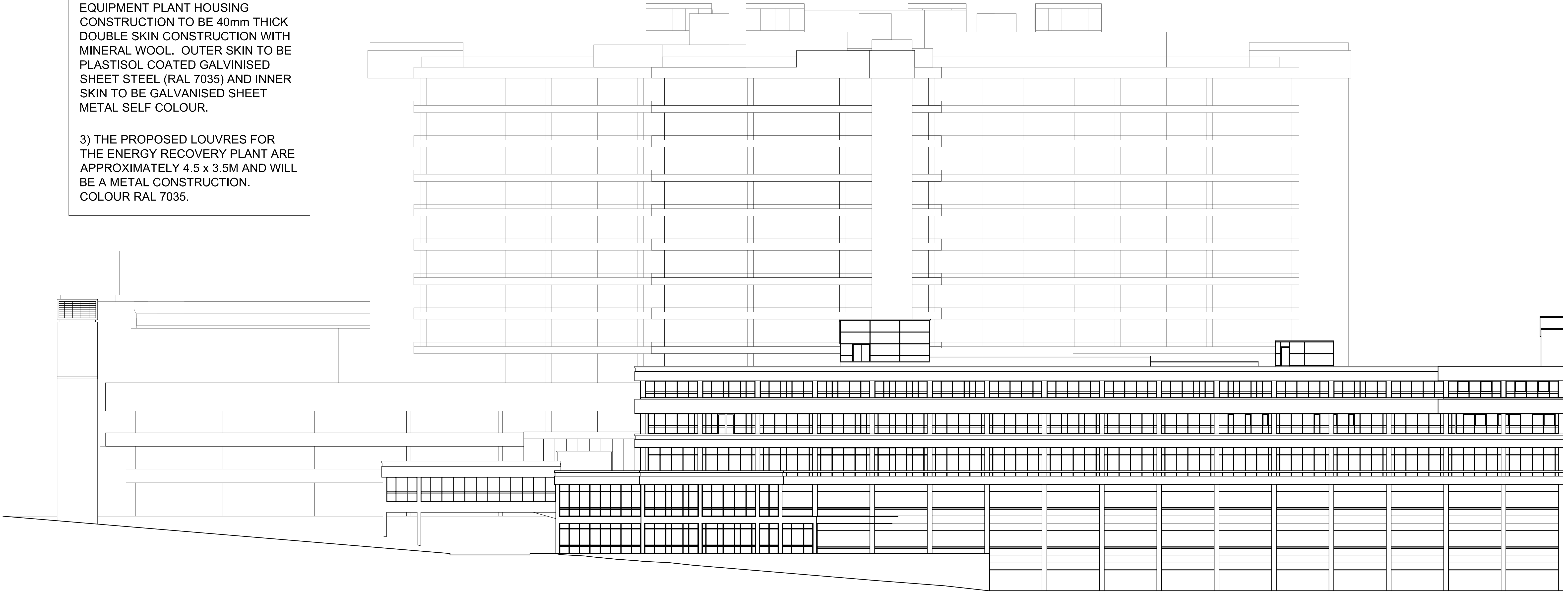
THIS DRAWING IS PROTECTED BY COPYRIGHT			FIGURED DIMS. ONLY TO BE TAKEN FROM THIS DRAWING.		
ALL DIMENSIONS TO BE CHECKED ON SITE AND ANY DISCREPANCIES REPORTED TO THE ARCHITECT IMMEDIATELY.					
Rev	Date	Description			
A	20.11.2012	UPDATED TO SUIT M&E'S AND STRUCTURAL ENGINEERS DRAWINGS			

GENERAL NOTES

1) PROPOSED ENERGY RECOVERY EQUIPMENT PLANT HOUSING TO BE MODULAR PREFABRICATED PLANT WITH SHALLOW PITCHED ROOF MOUNTED EXISTING STAIR TOWER. FOR DETAILS REFER TO SERVICES CONSULTANT - THE RICHARD STEPHENS PARTNERSHIP LTD. DRAWING NUMBERS 1204MSK01 P2 & 1204MSK02 P2 AND THE STRUCTURAL ENGINEER - WAREHAM & ASSOCIATES DRAWING NUMBERS 12-744/XD-001 T2, 12-744/XD-002 T2, 12-744/XD-003 T2, 12-744/XD-004 T1, 12-744/XD-005 T1, AND 12-744/XD-006 T1.


2) PROPOSED ENERGY RECOVERY EQUIPMENT PLANT HOUSING CONSTRUCTION TO BE 40mm THICK DOUBLE SKIN CONSTRUCTION WITH MINERAL WOOL. OUTER SKIN TO BE PLASTISOL COATED GALVINISED SHEET STEEL (RAL 7035) AND INNER SKIN TO BE GALVANISED SHEET METAL SELF COLOUR.

3) THE PROPOSED LOUVRES FOR THE ENERGY RECOVERY PLANT ARE APPROXIMATELY 4.5 x 3.5M AND WILL BE A METAL CONSTRUCTION. COLOUR RAL 7035.



PROPOSED SOUTH ELEVATION

Royal Free London NHS Foundation Trust - AHU 75		PROPOSED SOUTH ELEVATION	
---	--	--------------------------	--



1:200@A1

06.08.12

12033

(02)007

A

DATE:

JOB NUMBER:

DRAWING NUMBER:

REV:

Tel 020 7387 0141

architects@ansellandbailey.com

CHARTERED ARCHITECTS

24-32 STEPHENSON WAY LONDON NW1 2HD

Fax 020 7387 7460

24-32 STEPHENSON WAY LONDON NW1 2HD