

Revisions		By	Chk
\ 110331	Draft Issue	JA	DH
A 110412	Issued for Planning	SU	DH
B 110421	For Approval	SU	DH
C 110715	Atrium and core updated	DK	PF
D 110727	Incorporating Argent Comments	DK	PF
E 120712	Issued for Minor Planning Amendments	JA	PF
F 120814	Issued for Minor Planning Amendments	JA	PF
G 121005	Issued for Minor Planning Amendments	JA	PF

Notes : Drawings As Proposed



Bennetts Associates Architects

1 Rawstorne Place London EC1V 7NL
T +44 (0)20 7520 3300 F +44 (0)20 7520 3333
E mail@bennettsassociates.com

For Bennetts Associates' electronic information issue disclaimer -
www.bennettsassociates.com/information/disclaimer

Project Project No. 0918

Plot B3, Kings Cross Central
Kings Cross Central General Partner Ltd

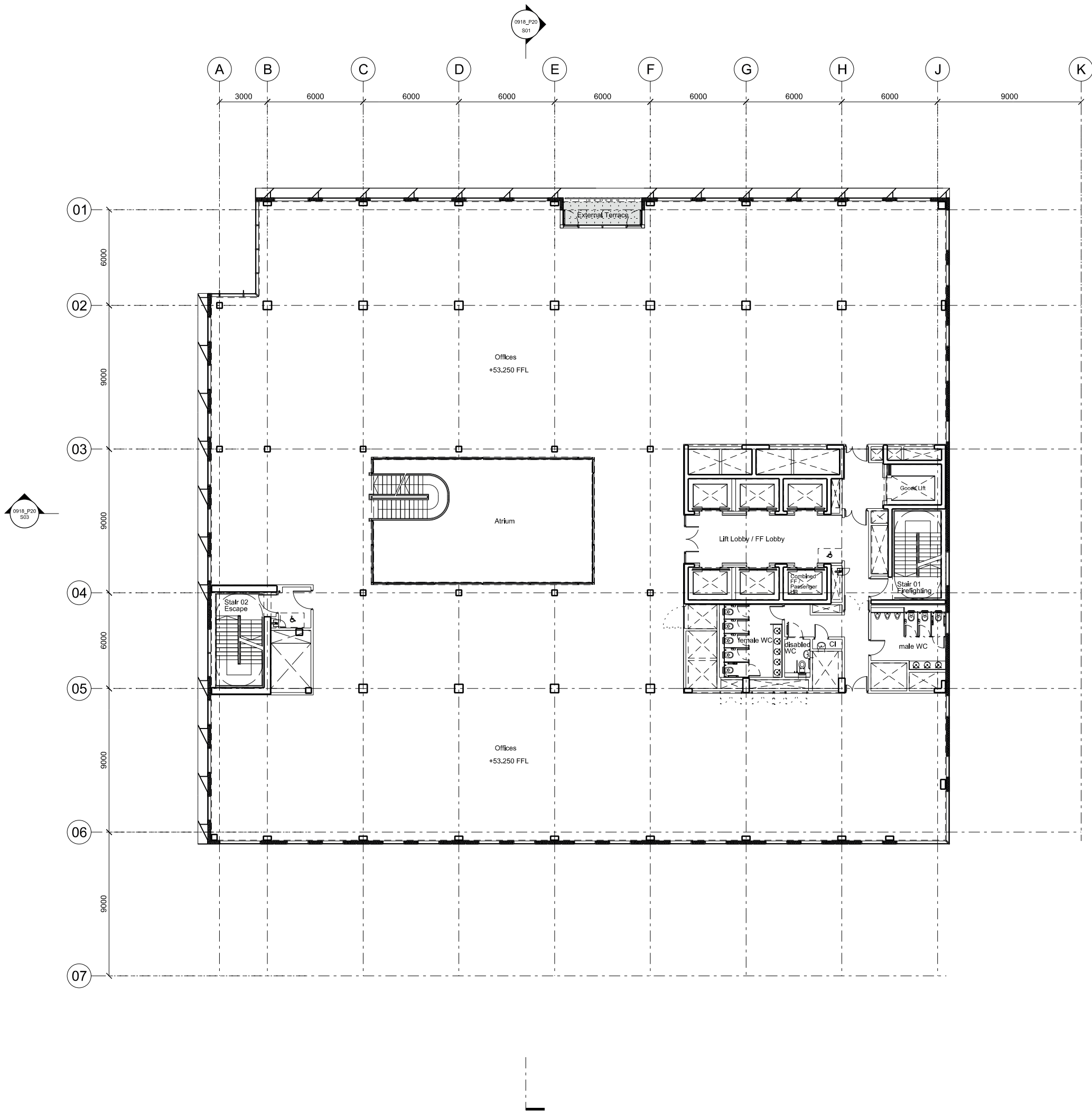
Drawing Title
Seventh Floor Plan

Drawing Number
0918_P20_P07

Revision
G

Scale @ A3 Scale @ A1 Date Drawn
1 : 250 1:125 121005

YY MM DD



Revisions		By	Chk
\ 110331	Draft Issue	SU	DH
A 110412	Issued for Planning	SU	DH
B 110421	For Approval	SU	DH
C 110715	Atrium and core updated	DK	PF
D 110727	Incorporating Argent Comments	DK	PF
E 120712	Issued for Planning Minor Amendments	JA	PF
F 120814	Issued for Planning Minor Amendments	JA	PF

Notes : Drawings As Proposed



Bennetts Associates Architects

1 Rawstorne Place London EC1V 7NL
T +44 (0)20 7520 3300 F +44 (0)20 7520 3333
E mail@bennettsassociates.com

For Bennetts Associates' electronic information issue disclaimer -
www.bennettsassociates.com/information/disclaimer

Project Project No. 0918

Plot B3, Kings Cross Central

Kings Cross Central General Partner Ltd

Drawing Title

Eighth Floor Plan

Drawing Number

0918_P20_P08

Revision

F

Scale @ A3

1 : 250

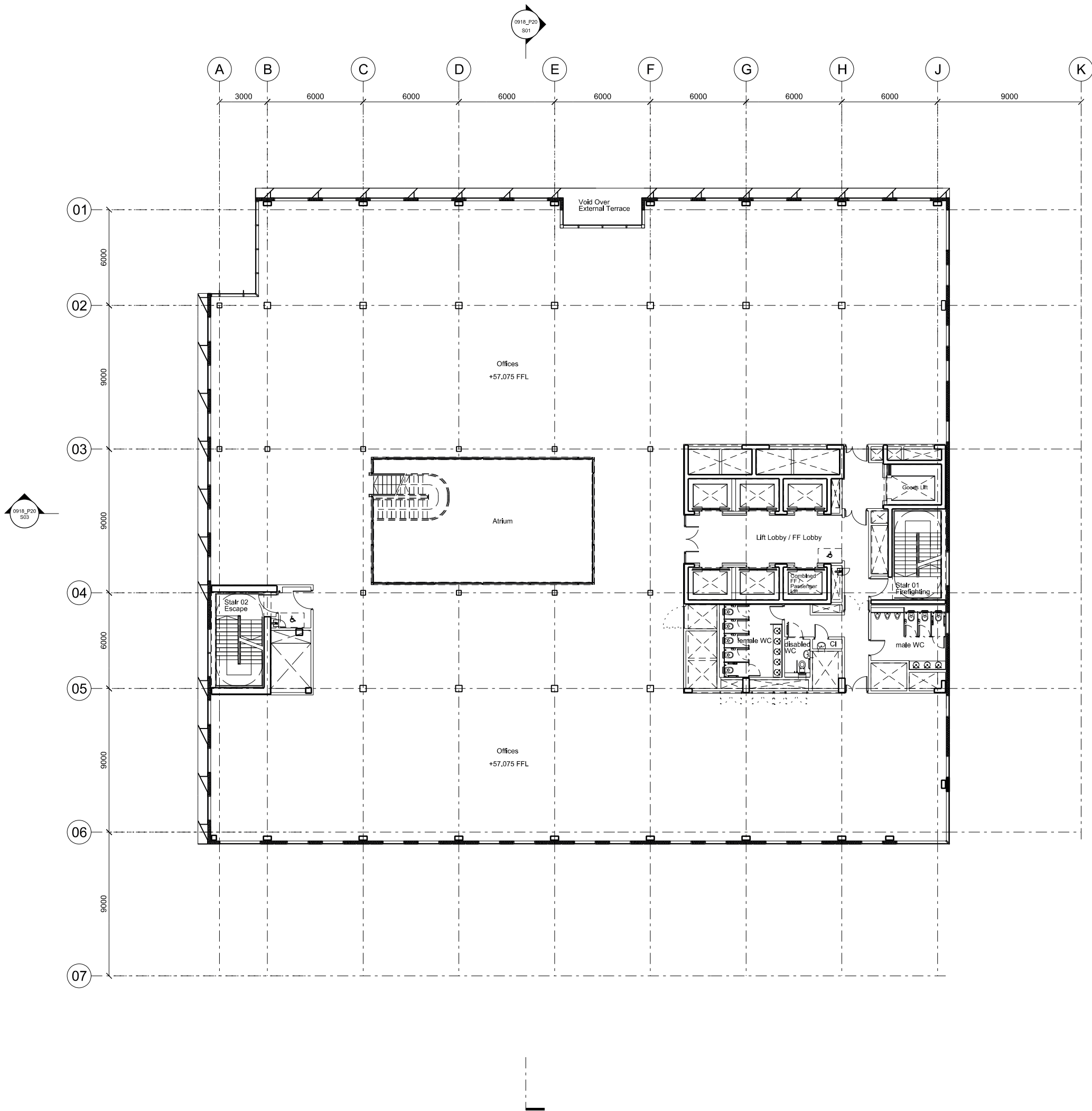
Scale @A1

1:125

Date Drawn

120814

YY MM DD



Revisions		By	Chk
\ 110331	Draft Issue	SU	DH
A 110412	Issued for Planning	SU	DH
B 110421	For Approval	SU	DH
C 110715	Atrium and core updated	DK	PF
D 110727	Incorporating Argent Comments	DK	PF
E 120712	Issued for Planning Minor Amendments	JA	PF
F 120814	Issued for Planning Minor Amendments	JA	PF

Notes : Drawings As Proposed



Bennetts Associates Architects

1 Rawstorne Place London EC1V 7NL
T +44 (0)20 7520 3300 F +44 (0)20 7520 3333
E mail@bennettsassociates.com

For Bennetts Associates' electronic information issue disclaimer -
www.bennettsassociates.com/information/disclaimer

Project Project No. 0918

Plot B3, Kings Cross Central
Kings Cross Central General Partner Ltd

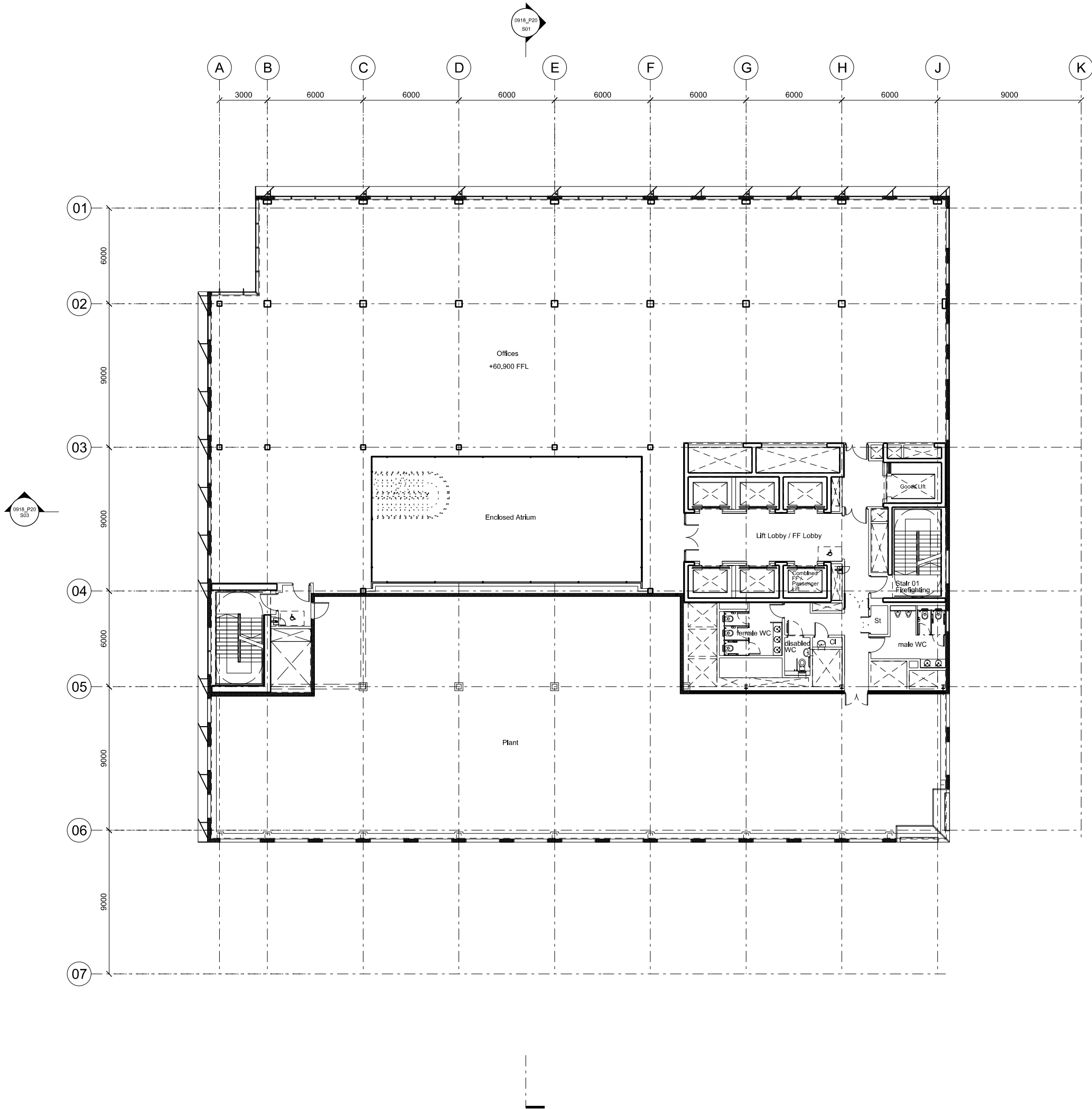
Drawing Title
Ninth Floor Plan

Drawing Number
0918_P20_P09

Revision
F

Scale @ A3 Scale @A1 Date Drawn
1 : 250 1:125 120814

YY MM DD



Revisions	By	Chk
\ 110331 Draft Issue	SU	DH
A 110412 Issued for Planning	SU	DH
B 110421 For Approval	SU	DH
C 110715 Atrium and core updated	DK	PF
D 110727 Incorporating Argent Comments	DK	PF
E 120712 Issued for Planning Minor Amendments	JA	PF
F 120814 Issued for Planning Minor Amendments	JA	PF

Notes : Drawings As Proposed



Bennetts Associates Architects

1 Rawstorne Place London EC1V 7NL
T +44 (0)20 7520 3300 F +44 (0)20 7520 3333
E mail@bennettsassociates.com
For Bennetts Associates' electronic information issue disclaimer -
www.bennettsassociates.com/information/disclaimer

Project Project No. 0918

Plot B3, Kings Cross Central
Kings Cross Central General Partner Ltd

Drawing Title
Tenth Floor Plan

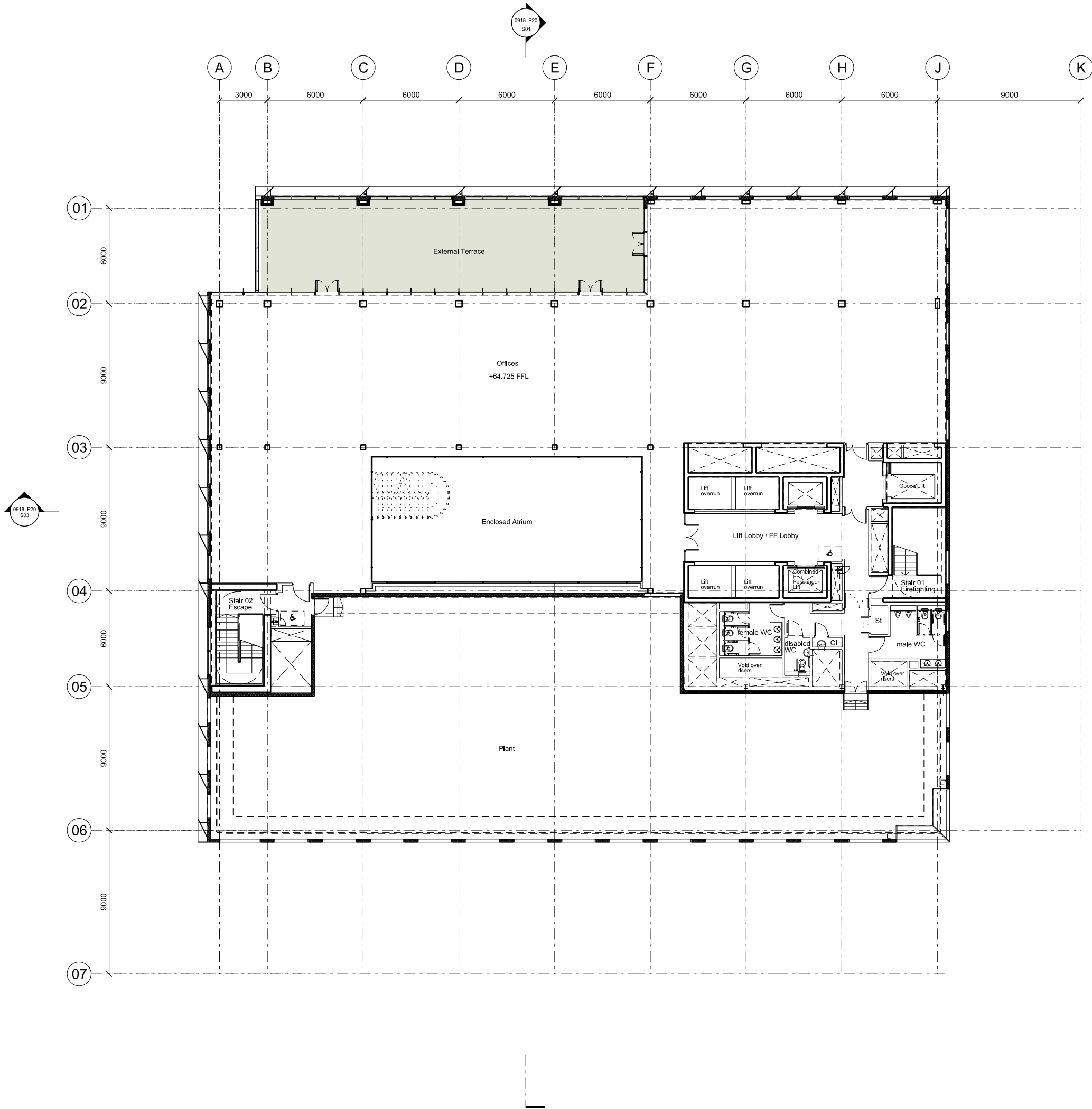
Drawing Number
0918_P20_P10

Revision
F

Scale @ A3
1 : 250

Scale @ A1
1 : 125

Date Drawn
120814
YY MM DD



Revisions		By	Chk
\ 110331	Draft Issue	SU	DH
A 110412	Issued for Planning	SU	DH
B 110421	For Approval	SU	DH
C 110715	Atrium and core updated	DK	PF
D 110727	Incorporating Argent Comments	DK	PF
E 120712	Issued for Planning Minor Amendments	JA	PF
F 120814	Issued for Planning Minor Amendments	JA	PF

Notes : Drawings As Proposed



Bennetts Associates Architects

1 Rawstorne Place London EC1V 7NL
T +44 (0)20 7520 3300 F +44 (0)20 7520 3333
E mail@bennettsassociates.com
For Bennetts Associates' electronic information issue disclaimer -
www.bennettsassociates.com/information/disclaimer

Project Project No. 0918

Plot B3, Kings Cross Central
Kings Cross Central General Partner Ltd

Drawing Title
Eleventh Floor Plan

Drawing Number
0918_P20_P11

Revision
F

Scale @ A3
1 : 250

Scale @A1
1 : 125

Date Drawn
120814

YY MM DD

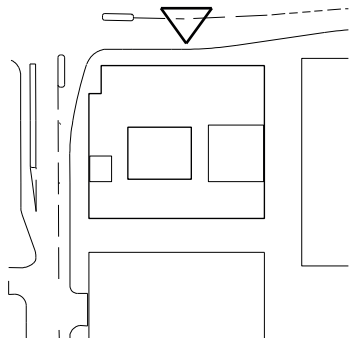


Revisions	By	Chk
\ 110331 Draft Issue	AD	DH
A 110412 Issued for Planning	DK	DH
B 110421 For Approval	SU	DH
C 110727 Incorporating Argent Comments	DK	PF
D 110801 Incorporating Argent Comments	JA	PF
E 120712 Issued for Planning Minor Amendments	JA	PF

Notes : Drawings As Proposed

PLANNING LEGEND FOR ELEVATIONS

- 1 - Bronze coloured anodised aluminium cladding
- 2 - North facade two storey bronze coloured anodised aluminium cladding projecting solar control fin
- 3 - West facade two storey bronze coloured anodised aluminium cladding projecting solar control fin
- 4 - Bms controlled top hung opening window with Bronze coloured anodised aluminium frame
- 5 - Manually operated double glazed top hung window with bronze coloured anodised aluminium frame
- 6 - Insulated glazed spandrel unit, uncoated, fritted
- 7 - Fixed double glazed window unit with bronze anodised aluminium frame
- 8 - Reconstituted stone panel
- 9 - Reconstituted stone panel to column
- 10 - Light bronze coloured anodised aluminium panel to inside of reveal
- 11 - Flush Bronze coloured anodised aluminium panel
- 12 - Bronze coloured anodised aluminium grill plant screen
- 13 - Light bronze coloured anodised aluminium panel to soffit of balcony



Key Plan

Bennetts Associates Architects

1 Rawstorne Place London EC1V 7NL
T +44 (0)20 7520 3300 F +44 (0)20 7520 3333
E mail@bennettsassociates.com

For Bennetts Associates' electronic information issue disclaimer -
www.bennettsassociates.com/information/Disclaimer

Project Project No. 0918

Plot B3, Kings Cross Central
Kings Cross Central General Partner Ltd

Drawing Title
North Elevation

Drawing Number
0918_P20_E01

Scale @ A3
1 : 250

Scale @A1
1 : 125

Revision
E

Date Drawn
120712
YY MM DD

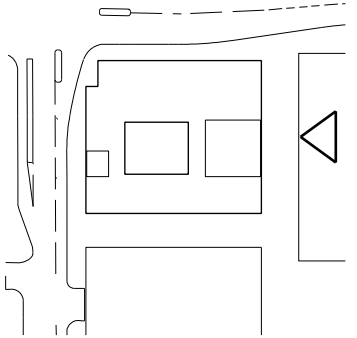


Revisions	By	Chk
\ 110331 Draft Issue	AD	DH
A 110412 Issued for Planning	DK	DH
B 110421 For Approval	SU	DH
C 110727 Incorporating Argent Comments	DK	PF
D 110801 Incorporating Argent Comments	JA	PF
E 120712 Issued for Planning Minor Amendments	JA	PF

Notes : Drawings As Proposed

PLANNING LEGEND FOR ELEVATIONS

- 1 - Bronze coloured anodised aluminium cladding spandrel/cill channel
- 2 - North facade two storey bronze coloured anodised aluminium cladding projecting solar control fin
- 3 - West facade two storey bronze coloured anodised aluminium cladding projecting solar control fin
- 4 - Bms controlled top hung opening window with Bronze coloured anodised aluminium frame
- 5 - Manually operated double glazed top hung window with bronze coloured anodised aluminium frame
- 6 - Insulated glazed spandrel unit, uncoated, fritted
- 7 - Fixed double glazed window unit with bronze anodised aluminium frame
- 8 - Reconstituted stone panel
- 9 - Reconstituted stone panel to column
- 10 - Light bronze coloured anodised aluminium panel to inside of reveal
- 11 - Flush Bronze coloured anodised aluminium panel
- 12 - Bronze coloured anodised aluminium grill plant screen
- 13 - light bronze coloured anodised aluminium panel to soffit of balcony



Key Plan

Bennetts Associates Architects

1 Rawstorne Place London EC1V 7NL
T +44 (0)20 7520 3300 F +44 (0)20 7520 3333
E mail@bennettsassociates.com

For Bennetts Associates' electronic information issue disclaimer -
www.bennettsassociates.com/information/B&A disclaimer

Project Project No. 0918

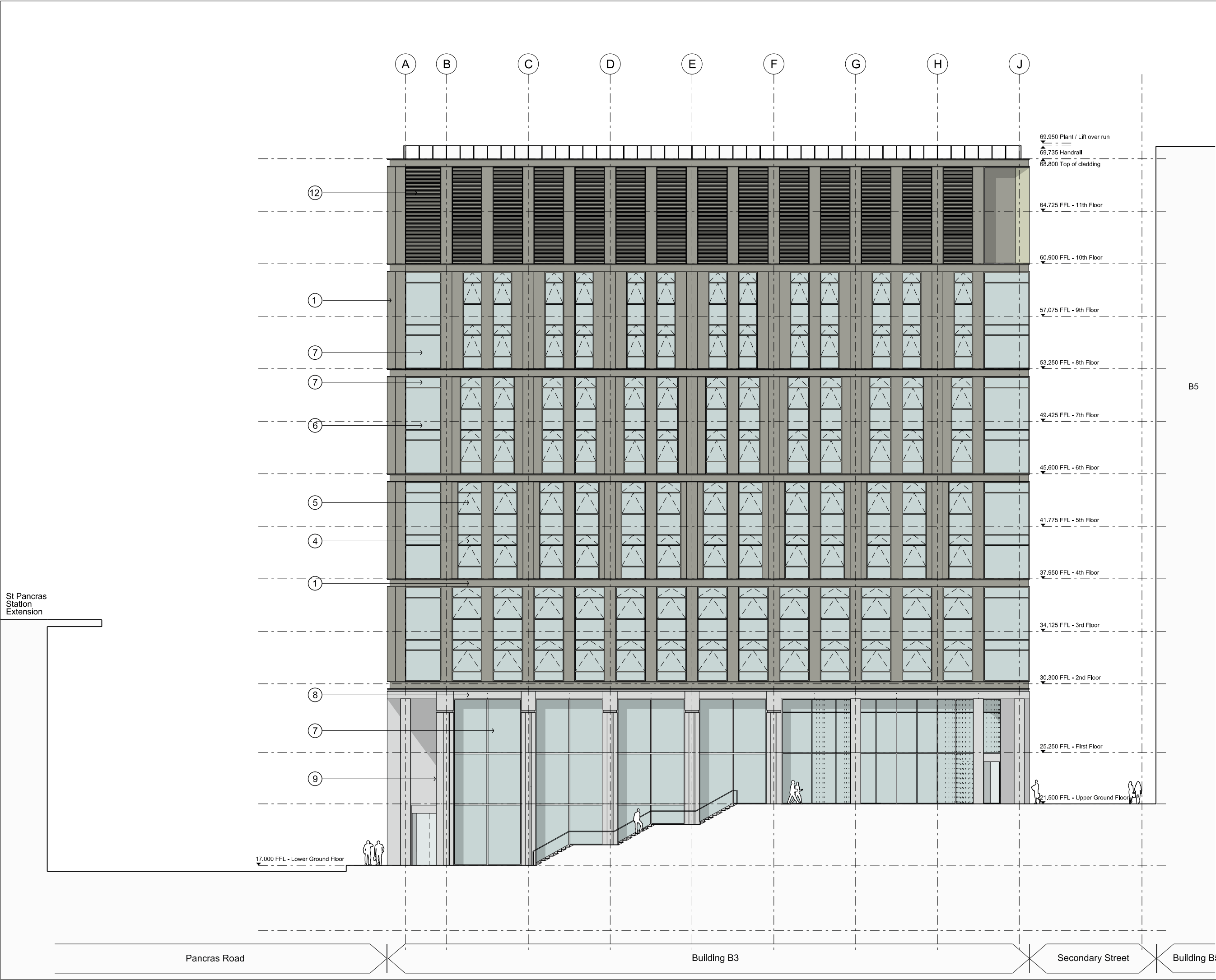
Plot B3, Kings Cross Central
Kings Cross Central General Partner Ltd

Drawing Title
East Elevation

Drawing Number
0918_P20_E02

Revision
E

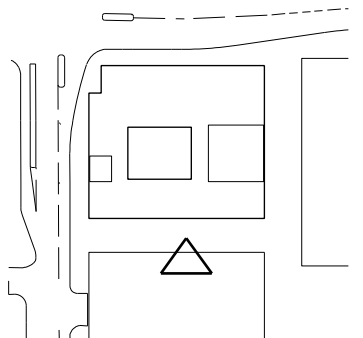
Scale @ A3 Scale @ A1 Date Drawn
1 : 250 1 : 125 120712
YY MM DD



Revisions	By	Chk
\ 110331 Draft Issue	AD	DH
A 110412 Issued for Planning	DK	DH
B 110421 For Approval	SU	DH
C 110727 Incorporating Argent Comments	DK	PF
D 110801 Incorporating Argent Comments	JA	PF
E 120712 Issued for Planning Minor Amendments	JA	PF

Notes : Drawings As Proposed

- PLANNING LEGEND FOR ELEVATIONS
- 1 - Bronze coloured anodised aluminium cladding spandrel/cill channel
 - 2 - North facade two storey bronze coloured anodised aluminium cladding projecting solar control fin
 - 3 - West facade two storey bronze coloured anodised aluminium cladding projecting solar control fin
 - 4 - Bms controlled top hung opening window with Bronze coloured anodised aluminium frame
 - 5 - Manually operated double glazed top hung window with bronze coloured anodised aluminium frame
 - 6 - Insulated glazed spandrel unit, uncoated, fritted
 - 7 - Fixed double glazed window unit with bronze anodised aluminium frame
 - 8 - Reconstituted stone panel
 - 9 - Reconstituted stone panel to column
 - 10 - Light bronze coloured anodised aluminium panel to inside of reveal
 - 11 - Flush Bronze coloured anodised aluminium panel
 - 12 - Bronze coloured anodised aluminium grill plant screen
 - 13 - light bronze coloured anodised aluminium panel to soffit of balcony



Key Plan

Bennetts Associates Architects

1 Rawstorne Place London EC1V 7NL
T +44 (0)20 7520 3300 F +44 (0)20 7520 3333
E mail@bennettsassociates.com
For Bennetts Associates' electronic information issue disclaimer -
www.bennettsassociates.com/information/B3 disclaimer

Project Project No. 0918

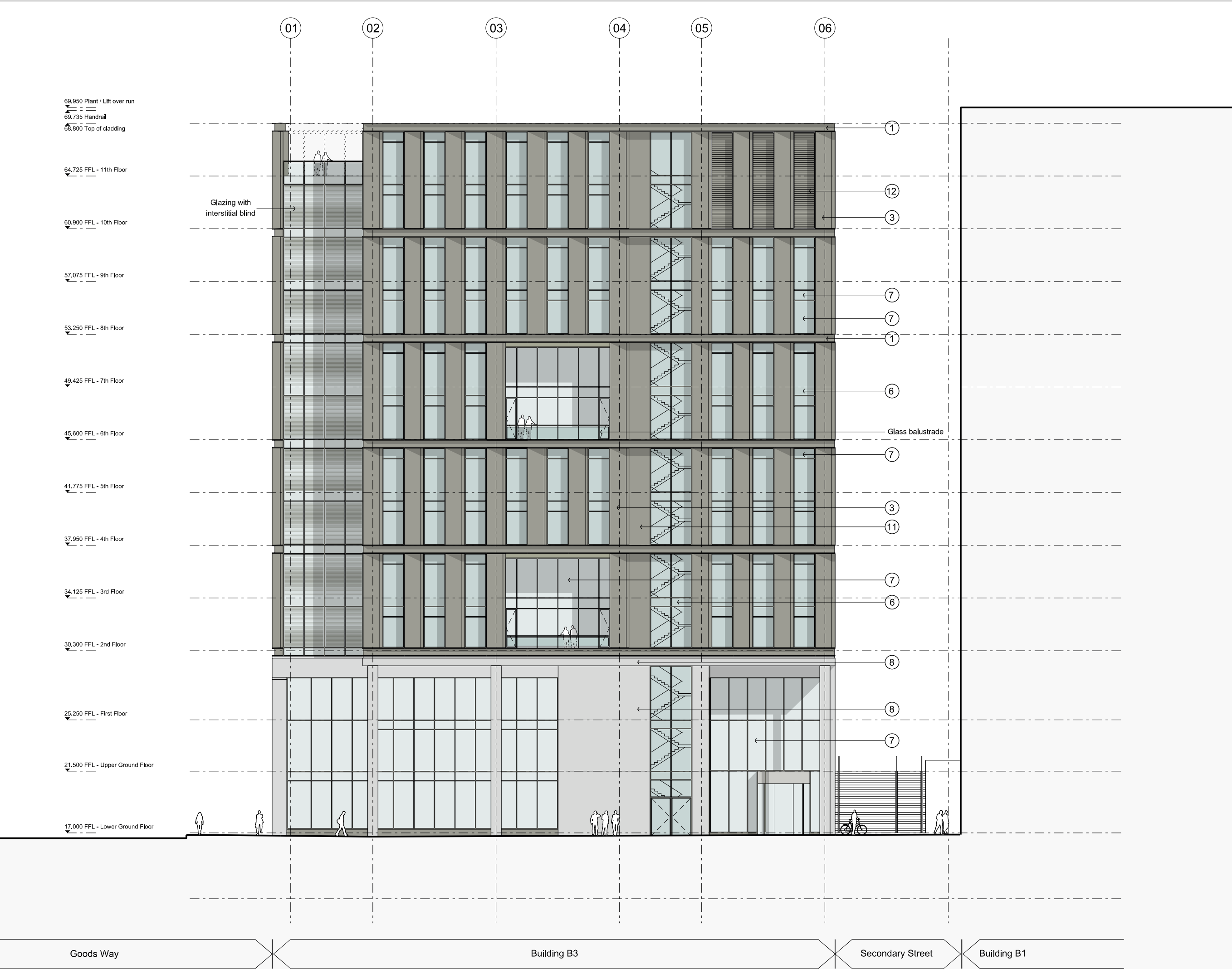
Plot B3, Kings Cross Central
Kings Cross Central General Partner Ltd

Drawing Title
South Elevation

Drawing Number
0918_P20_E03

Revision
E

Scale @ A3 Scale @A1 Date Drawn
1 : 250 1 : 125 120712
YY MM DD

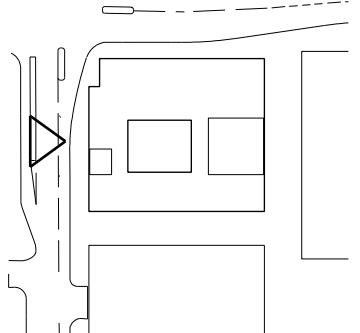


Revisions	By	Chk
\ 110331 Draft Issue	AD	DH
A 110412 Issued for Planning	DK	DH
B 110421 For Approval	SU	DH
C 110727 Incorporating Argent Comments	DK	PF
D 110801 Incorporating Argent Comments	JA	PF
E 120712 Issued for Planning Minor Amendments	JA	PF
F 140812 Issued for Planning Minor Amendments	JA	PF

Notes : Drawings As Proposed

PLANNING LEGEND FOR ELEVATIONS

- 1 - Bronze coloured anodised aluminium cladding spandrel/channel
- 2 - North facade two storey bronze coloured anodised aluminium cladding projecting solar control fin
- 3 - West facade two storey bronze coloured anodised aluminium cladding projecting solar control fin
- 4 - Bms controlled top hung opening window with Bronze coloured anodised aluminium frame
- 5 - Manually operated double glazed top hung window with bronze coloured anodised aluminium frame
- 6 - Insulated glazed spandrel unit, uncoated, fritted
- 7 - Fixed double glazed window unit with bronze anodised aluminium frame
- 8 - Reconstituted stone panel
- 9 - Reconstituted stone panel to column
- 10 - Light bronze coloured anodised aluminium panel to inside of reveal
- 11 - Flush Bronze coloured anodised aluminium panel
- 12 - Bronze coloured anodised aluminium grill plant screen
- 13 - Light bronze coloured anodised aluminium panel to soffit of balcony



Key Plan

Bennetts Associates Architects

1 Rawstorne Place London EC1V 7NL
T +44 (0)20 7520 3300 F +44 (0)20 7520 3333
E mail@bennettsassociates.com

For Bennetts Associates' electronic information issue disclaimer -
www.bennettsassociates.com/informational disclaimer

Project Project No. 0918

Plot B3, Kings Cross Central

Kings Cross Central General Partner Ltd

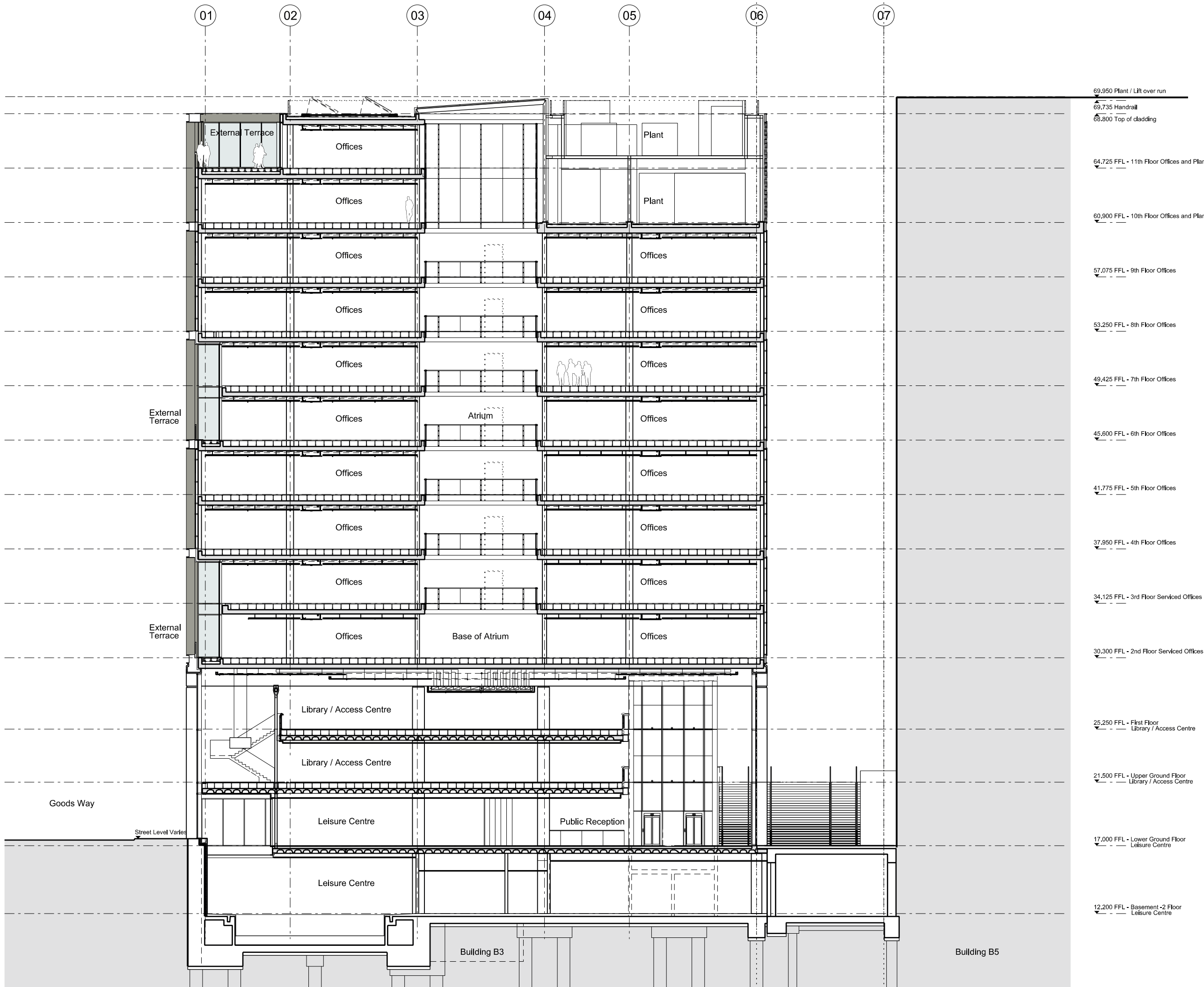
Drawing Title

West Elevation

Drawing Number
0918_P20_E04

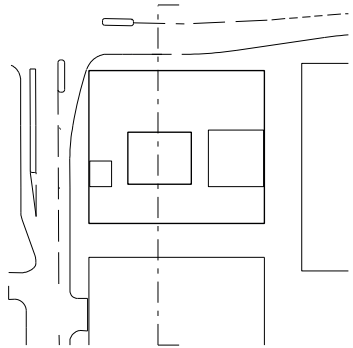
Revision
F

Scale @ A3 Scale @ A1 Date Drawn
1 : 250 1 : 125 140812
YY MM DD



Revisions	By	Chk
\ 110331 Draft Issue	JA	DH
A 110412 Issued for Planning	SU	DH
B 110421 For Approval	JA	DH
C 110715 Atrium and core updated	DK	PF
D 110727 Incorporating Argent Comments	JA	PF
E 120712 Issued for Planning Minor Amendments	JA	PF

Notes : Drawings as proposed



Key Plan

Bennetts Associates Architects

1 Rawstorne Place London EC1V 7NL
T +44 (0)20 7520 3300 F +44 (0)20 7520 3333
E mail@bennettsassociates.com
For Bennetts Associates' electronic information issue disclaimer -
www.bennettsassociates.com/information@bennetts

Project Project No. 0918

Plot B3, Kings Cross Central
Kings Cross Central General Partner Ltd

Drawing Title
Section 01

Drawing Number
0918_P20_S01

Revision
E

Scale @ A3 Scale @A1 Date Drawn
1 : 250 1:125 120712

