

Notes : Drawings As Proposed

PLANNING LEGEND FOR ELEVATIONS

- 1 - Bronze coloured anodised aluminium cladding spandrel/channel
- 2 - North facade two storey bronze coloured anodised aluminium cladding projecting solar control fin
- 3 - West facade two storey bronze coloured anodised aluminium cladding projecting solar control fin
- 4 - Bms controlled top hung opening window with Bronze coloured anodised aluminium frame
- 5 - Manually operated double glazed top hung window with bronze coloured anodised aluminium frame
- 6 - Insulated glazed spandrel unit, uncoated, fritted
- 7 - Fixed double glazed window unit with bronze anodised aluminium frame
- 8 - Reconstituted stone panel
- 9 - Reconstituted stone panel to column
- 10 - Light bronze coloured anodised aluminium panel to inside of reveal
- 11 - Flush Bronze coloured anodised aluminium panel
- 12 - Bronze coloured anodised aluminium grill plant screen
- 13 - Light bronze coloured anodised aluminium panel to soffit of balcony

Bennetts Associates Architects

1 Rawston Place London EC1V 7NL  
T +44 (0)20 7520 3300 F +44 (0)20 7520 3333  
E mail@bennettsassociates.com  
For Bennetts Associates' electronic information issue disclaimer -  
www.bennettsassociates.com/information@bennetts

Project Project No. 0918  
**Plot B3, Kings Cross Central**  
Kings Cross Central General Partner Ltd

Drawing Title  
**West Elevation**

Drawing Number  
**0918\_P20\_E04**

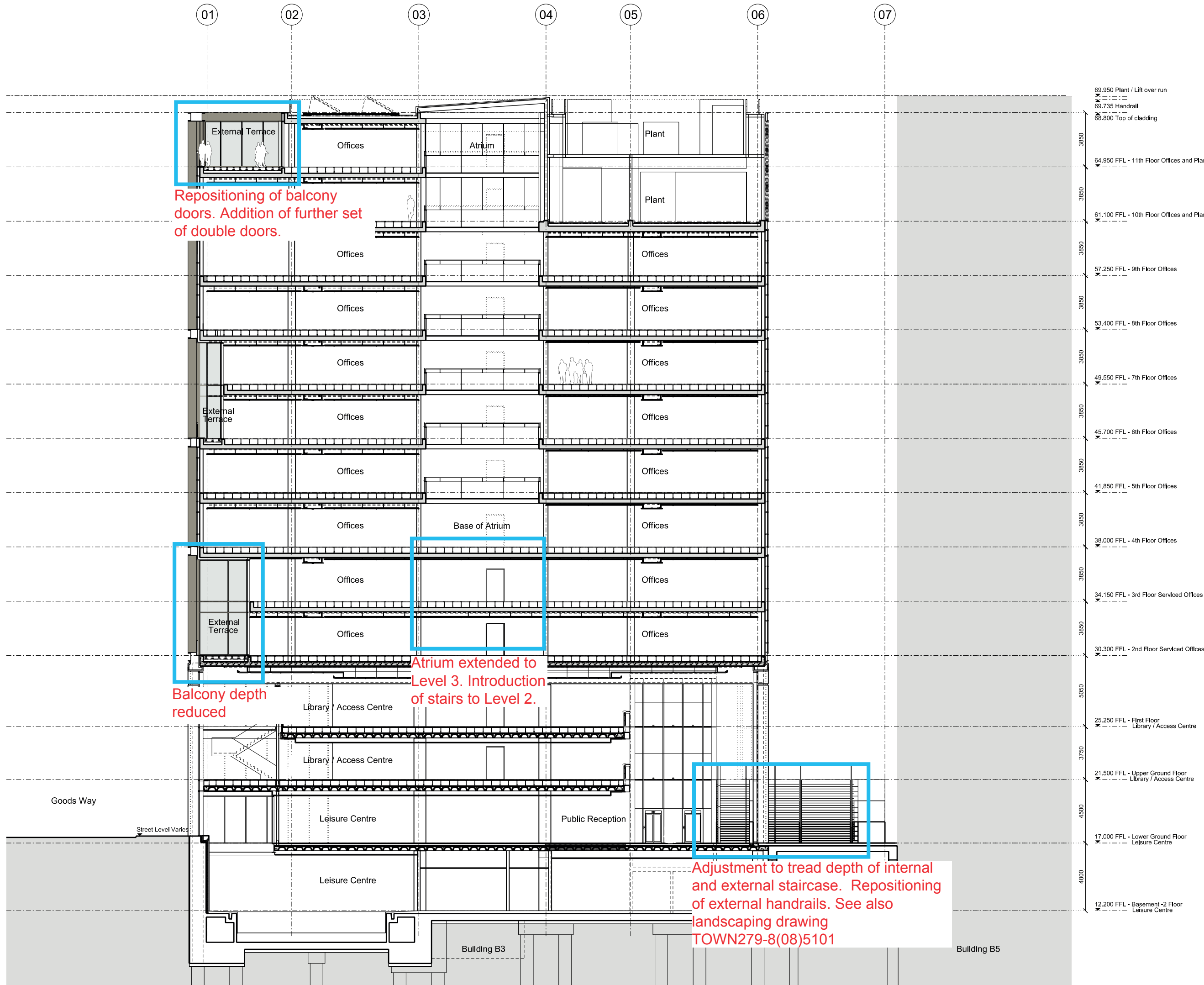
Revision  
**D**

Scale @ A3  
**1 : 250**

Scale @A1  
**1 : 125**

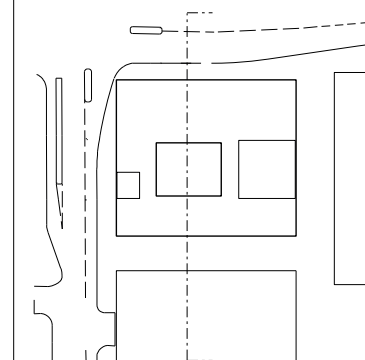
Revision Date  
**110801**  
YY MM DD





Revisions		By	Chk
I	110331 Draft Issue	JA	DH
A	110412 Issued for Planning	SU	DH
B	110421 For Approval	JA	DH
C	110715 Atrium and core updated	DK	PF
D	110727 Incorporating Argent Comments	JA	PF

Notes: Drawings as proposed



Key Plan

### Bennetts Associates Architects

I Rawstorne Place London EC1V 7NL  
T +44 (0)20 7520 3300 F +44 (0)20 7520 3333  
E mail@bennettsassociates.com  
For Bennetts Associates' electronic information issue disclaimer -  
www.bennettsassociates.com/information/disclaimer/

Project Project No. 0918

**Plot B3, Kings Cross Central**  
Kings Cross Central General Partner Ltd

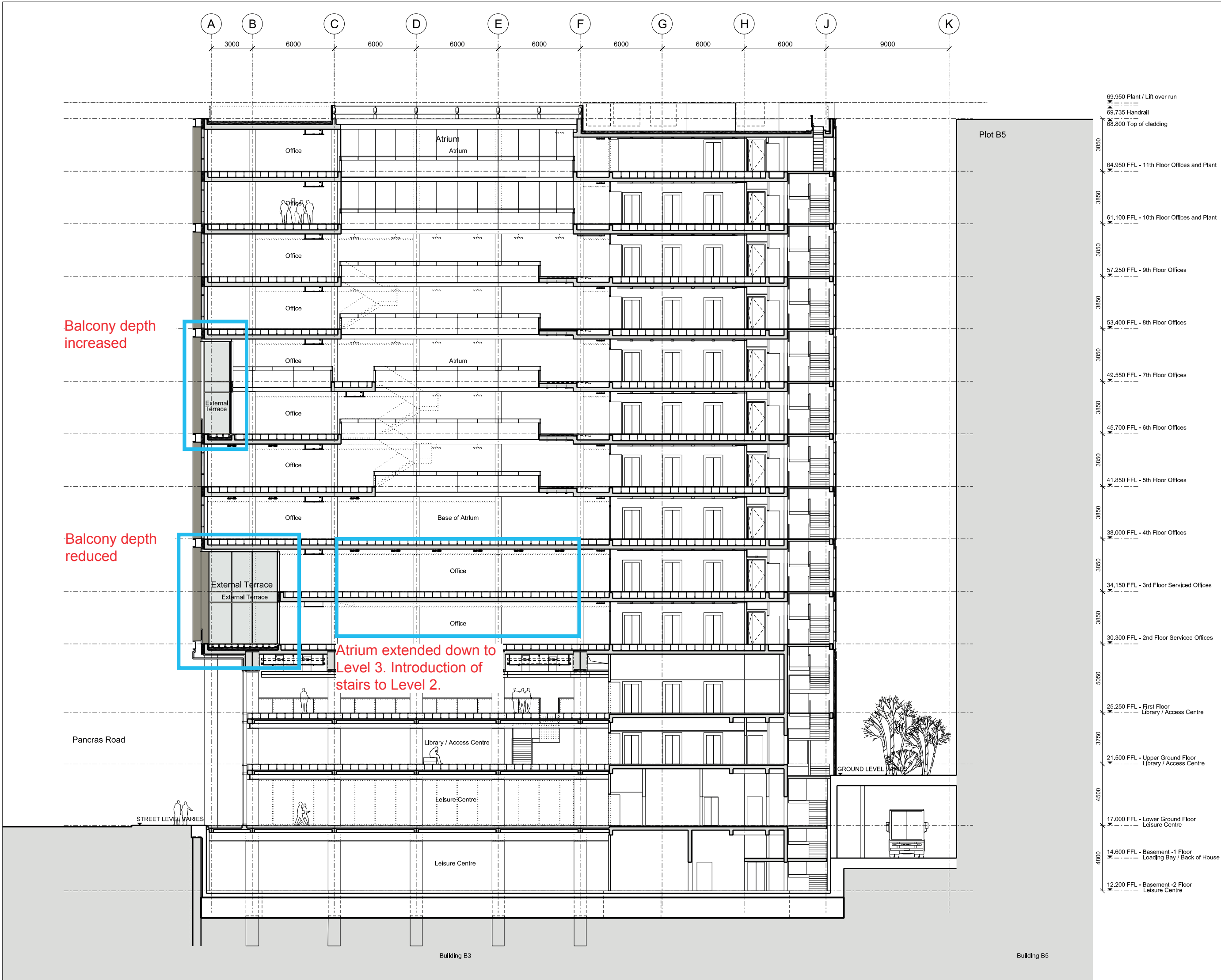
Drawing Title  
**Section 01**

Drawing Number  
**0918\_P20\_S01**

Scale @ A3	Scale @A1	Revision Date
1 : 250	1:125	110727

Revision  
**D**





Revisions

110331	Draft Issue	Chk
110412	Issued for Planning	SU
110421	For Approval	JA
110715	Atrium and core updated	DK
110727	Incorporating Argent comments	PE
110801	Incorporating Argent Comments	JA

Notes: Drawings as proposed

Key Plan

**Bennetts Associates Architects**

I Rawston Place London EC1V 7NL  
T +44 (0)20 7520 3300 F +44 (0)20 7520 3333  
E mail@bennettsassociates.com  
For Bennetts Associates' electronic information issue disclaimer -  
www.bennettsassociates.com/information@calder

Project

Project No. 0918

**Plot B3, Kings Cross Central**

Kings Cross Central General Partner Ltd

Drawing Title

**Section 03**

Drawing Number

0918\_P20\_S03

Scale @ A3

1 : 250

Revision

E

Scale @A1

1 : 125

Revision Date

110801

YY MM DD

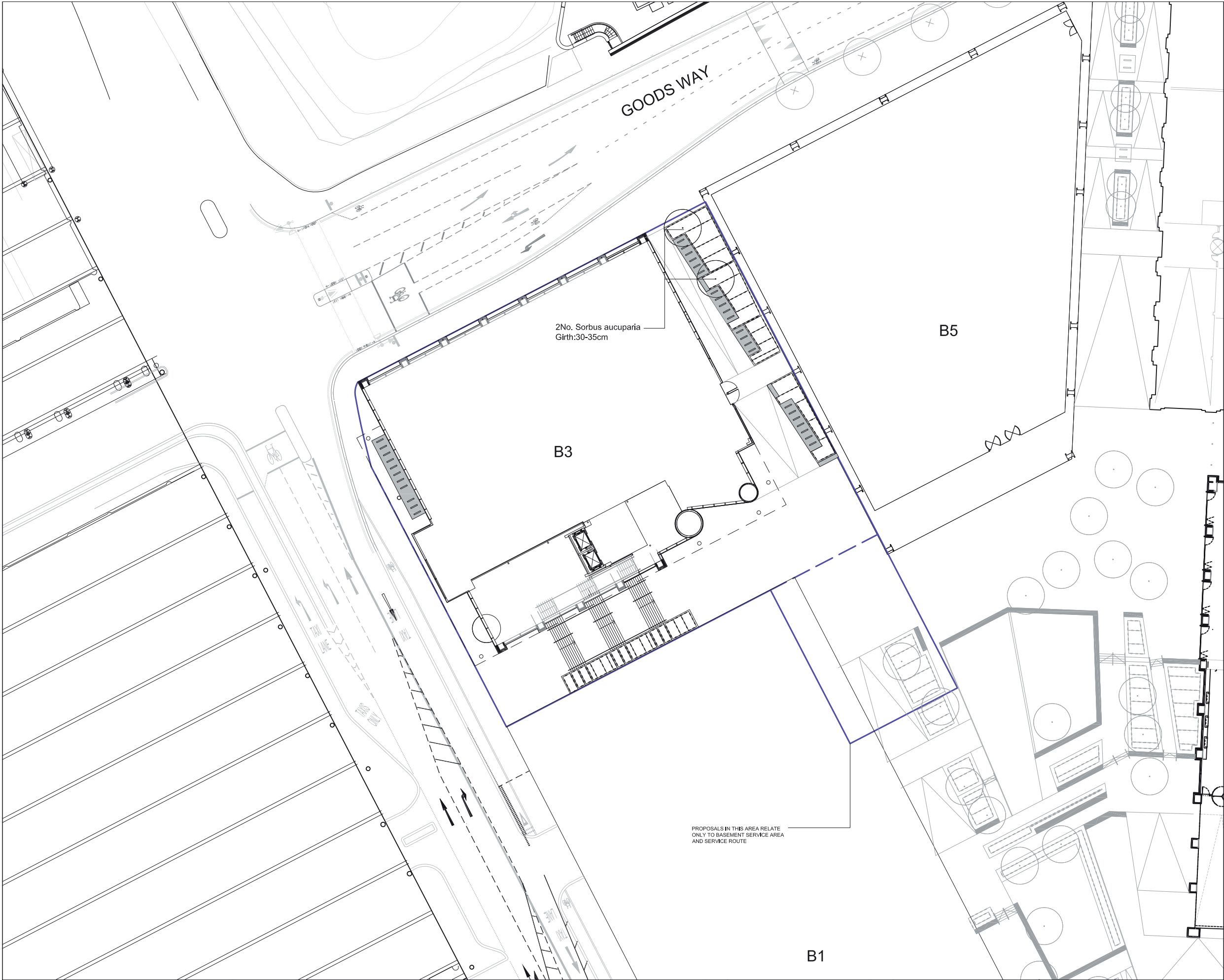












KEY

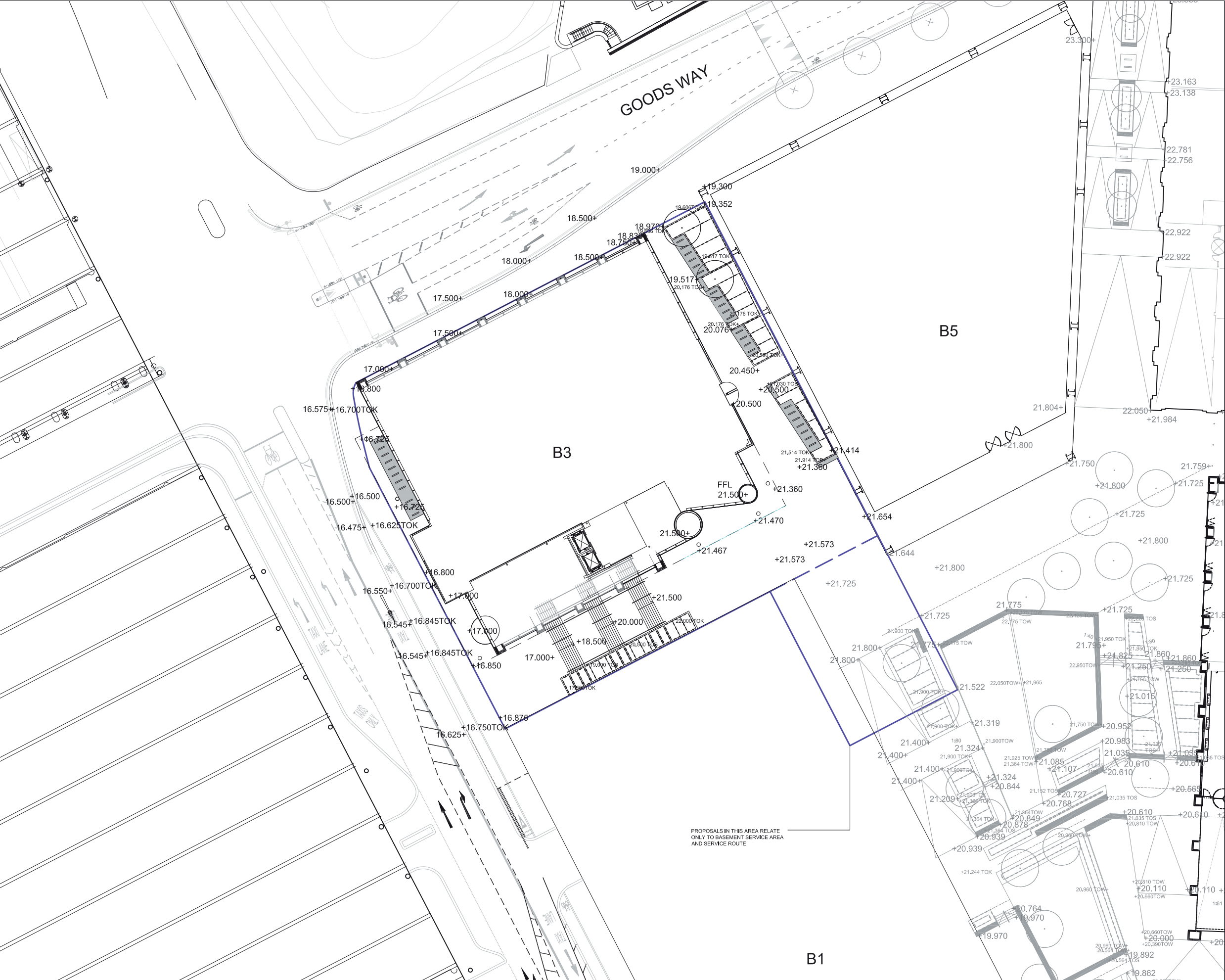
PROPOSED TREE PLANTING

PROPOSED SHRUB PLANTING

RESERVED MATTERS SUBMISSION BOUNDARY

Project KING'S CROSS CENTRAL BUILDING B3	Drawing Title TREE PLAN	Revision R01 Minor amendment	Date 30/06/11	Revision	Date	Revision	Date	Revision	Date	Revision	Date	Consultant TOWNSHEND Landscape Architects Unit 3A Zealand House London EC2A 4HU Telephone: 020 7729 8333 Fax: 020 7729 3300 E-Mail: info@townshend.co.uk	Project No. 279.08	Scale 1:250/ A1 1:500/ A3	Approved By MA	Drawing No.	Revision
		Revision R02 Boundary amended	Date 29/07/11										Date NOV 10	Drawing Size A1	Drawn By SM	TOWN279-8(08)3101	R02









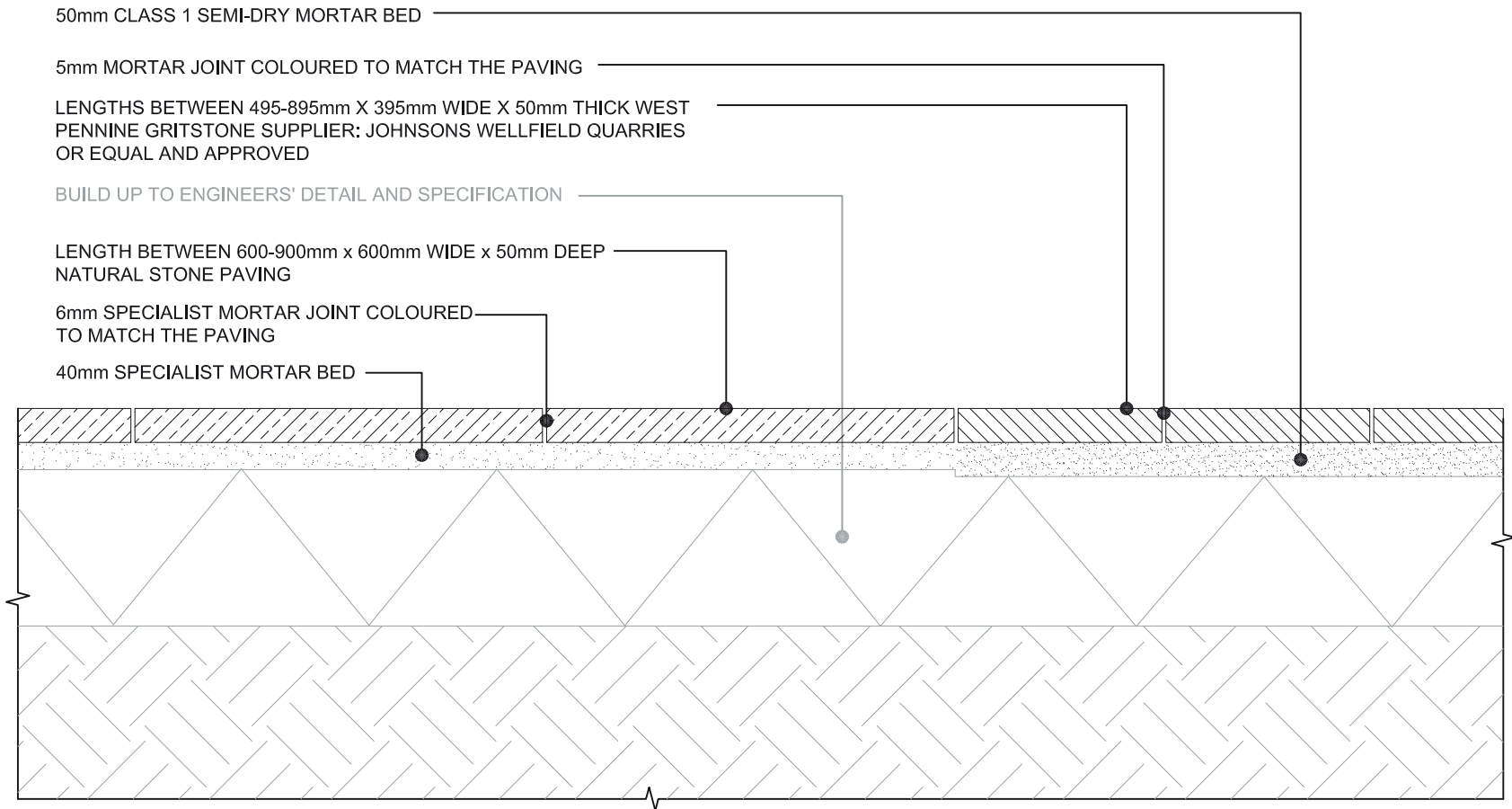












DETAIL 1.02  
NATURAL STONE PAVING INTERFACES  
SCALE 1:10

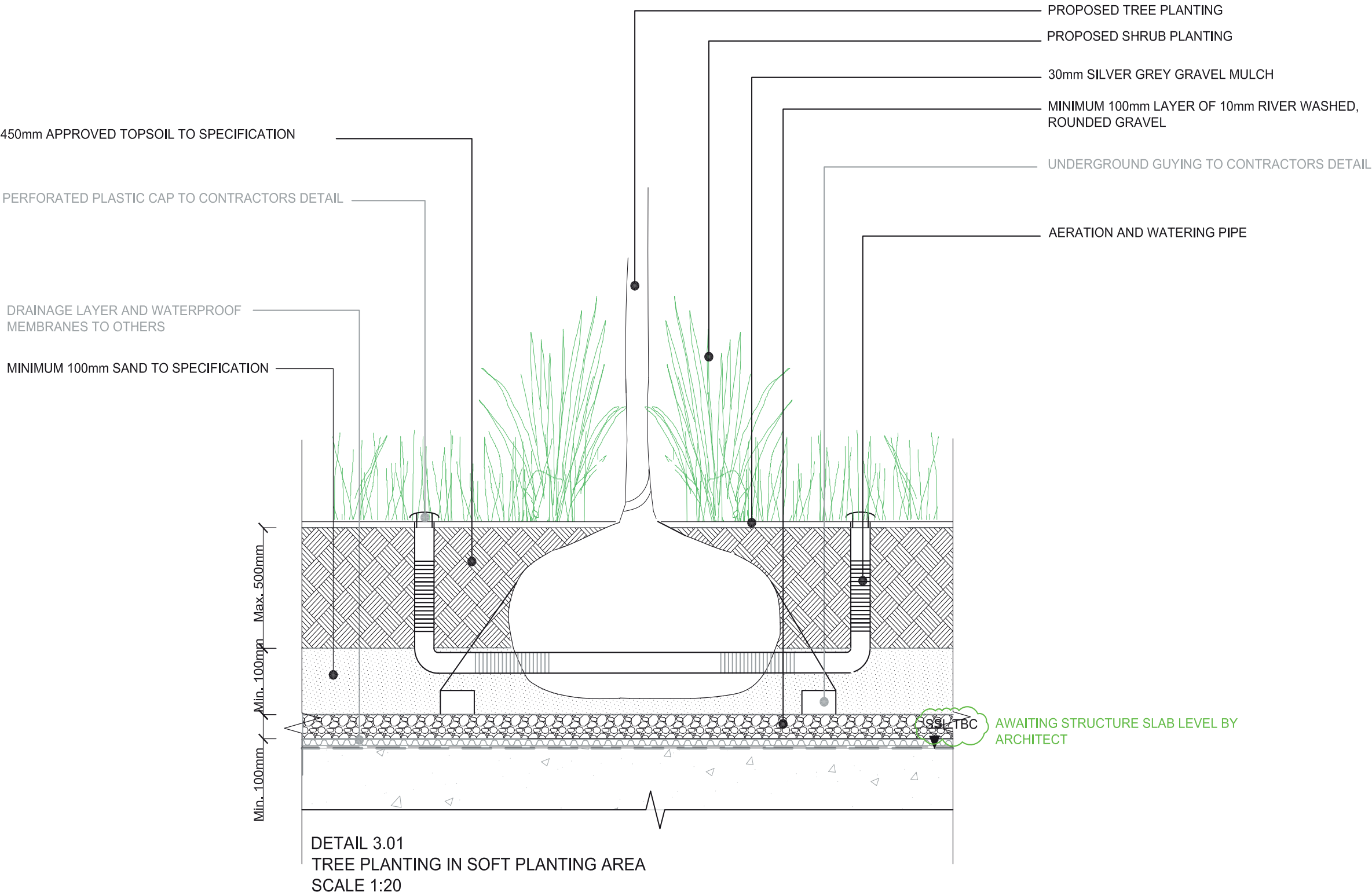
GENERAL NOTES

- 1. Do not scale drawing.
- 2. All setting out, levels and dimensions to be agreed on site.
- 3. The dimensions of all materials must be checked on site before being laid out.
- 4. This drawing must be read with the relevant specification clauses and detail drawings.
- 5. Order of construction and setting out to be agreed on site.

BE SAFE

Project KING'S CROSS CENTRAL BUILDING B3	Drawing Title DETAIL 1.02 NATURAL STONE PAVING INTERFACES	Revision	Date	Consultant TOWNSHEND Landscape Architects Unit 3A Zetland House London EC2A 4HJ Telephone: 020 7729 9333 Fax: 020 7729 3300 E-Mail <a href="mailto:lla@townshendla.com">lla@townshendla.com</a>	Project No. 279.8	Scale 1:10	Approved By MA	Drawing No. TOWN279-8(08)8102	Revision R04
		R01 Joint and bedding amended	200411						
		R02 Minor amendment	200511						
		R03 Issue date changed	290711						
		R04 Paving material	020811						
Client KING'S CROSS CENTRAL GENERAL PARTNER LTD					Date JULY 11	Drawing Size A3	Drawn By SM		






GENERAL NOTES

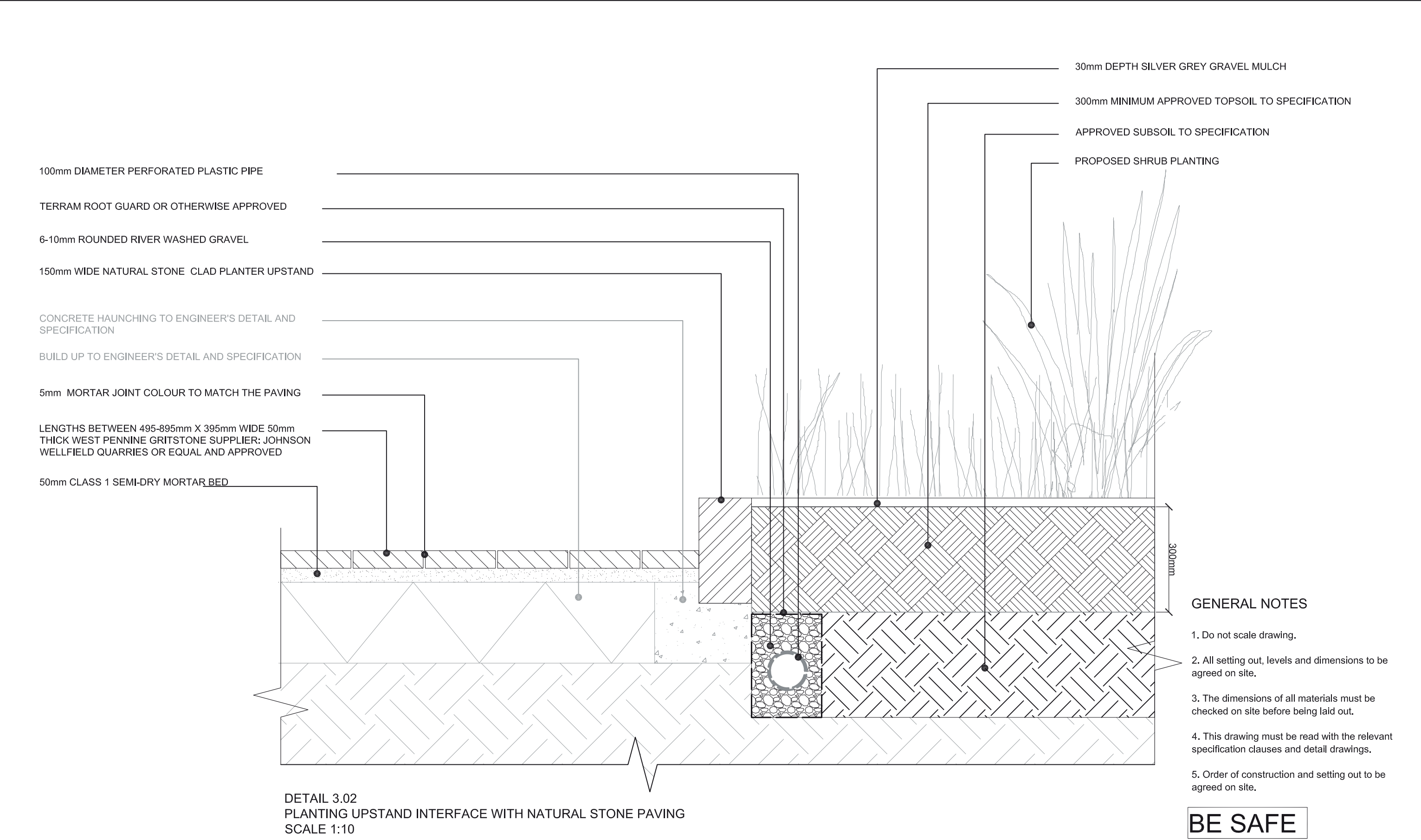
1. Do not scale drawing.
2. All setting out, levels and dimensions to be agreed on site.
3. The dimensions of all materials must be checked on site before being laid out.
4. This drawing must be read with the relevant specification clauses and detail drawings.
5. Order of construction and setting out to be agreed on site.

BE SAFE

Project	Drawing Title  DETAIL 3.01 TREE PLANTING IN SOFT PLANTING AREA	Revision	Date	Consultant  TOWNSHEND Landscape Architects Unit 3A Zetland House London EC2A 4HJ Telephone: 020 7729 9333 Fax: 020 7729 3300 E-Mail tla@townshenda.com		Project No.	Scale	Approved By	Drawing No.	Revision
KING'S CROSS CENTRAL BUILDING B3		R01 Detail updated	200411			279.8	1:10	MA		R03
Client KING'S CROSS CENTRAL GENERAL PARTNER LTD		R02 Detail updated	200511			Date	Drawing Size	Drawn By		TOWN279-8(08)8301
		R03 Issue date changed	290711			JULY 11	A3	SM		

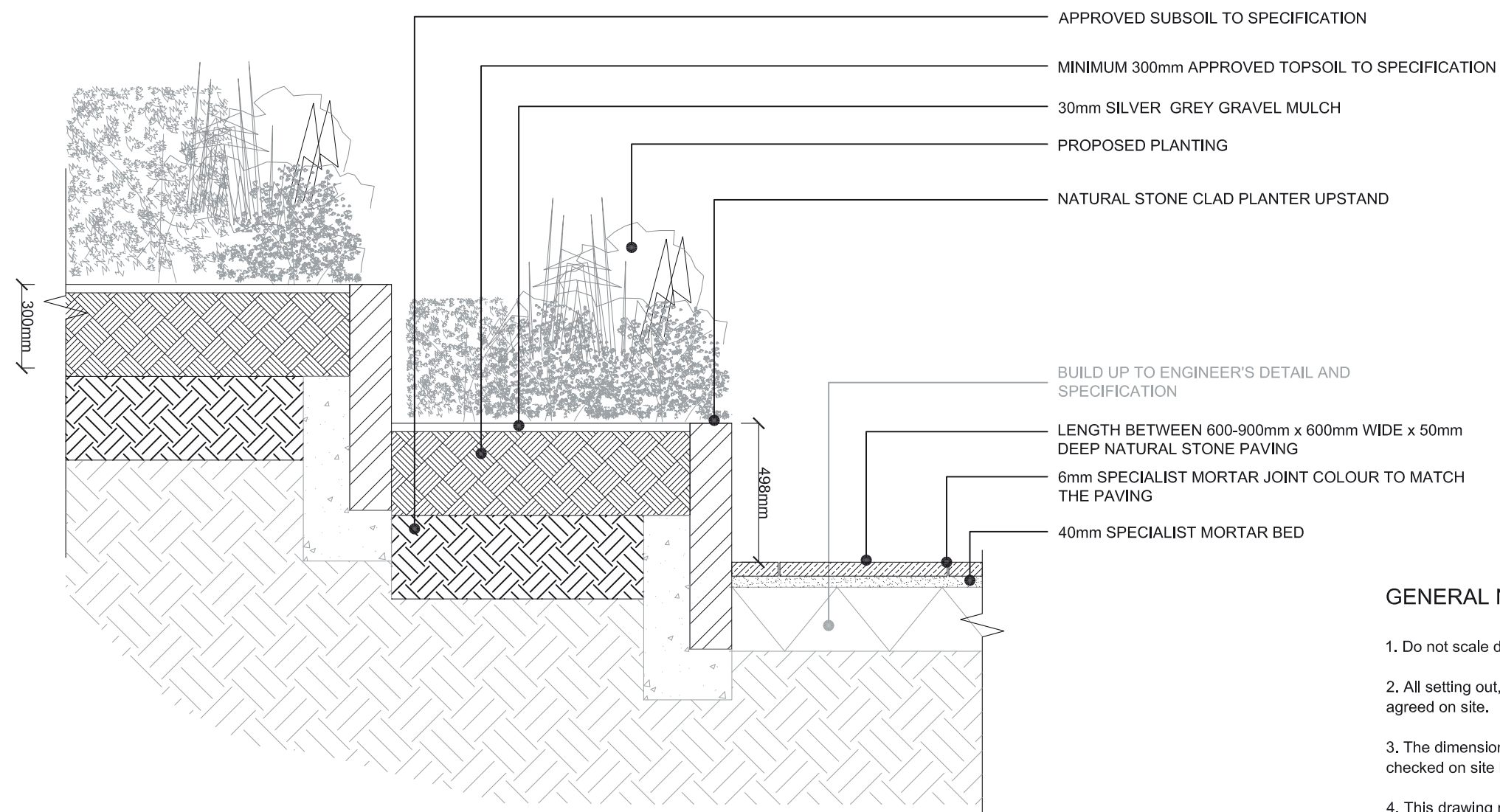






Project KING'S CROSS CENTRAL BUILDING B3	Drawing Title DETAIL 3.02 PLANTING UPSTAND INTERFACE WITH NATURAL STONE PAVING	Revision	Date	Consultant TOWNSHEND Landscape Architects Unit 3A Zetland House London EC2A 4HJ Telephone: 020 7729 9333 Fax: 020 7729 3300 E-Mail tla@townshendla.com	Project No. 279.8	Scale 1:10	Approved By MA	Drawing No. TOWN279-8(08)8302	Revision R04
		R01 Joint and bedding amended	200411						
		R02 Minor amendment	200511						
		R03 Issue date changed	290711						
		R04 Paving material	020811						
Client KING'S CROSS CENTRAL GENERAL PARTNER LTD					Date JULY 11	Drawing Size A3	Drawn By SM		






DETAIL 3.03  
STEPPED PLANTING DETAIL  
SCALE 1:20

- GENERAL NOTES
- 1. Do not scale drawing.
  - 2. All setting out, levels and dimensions to be agreed on site.
  - 3. The dimensions of all materials must be checked on site before being laid out.
  - 4. This drawing must be read with the relevant specification clauses and detail drawings.
  - 5. Order of construction and setting out to be agreed on site.

BE SAFE

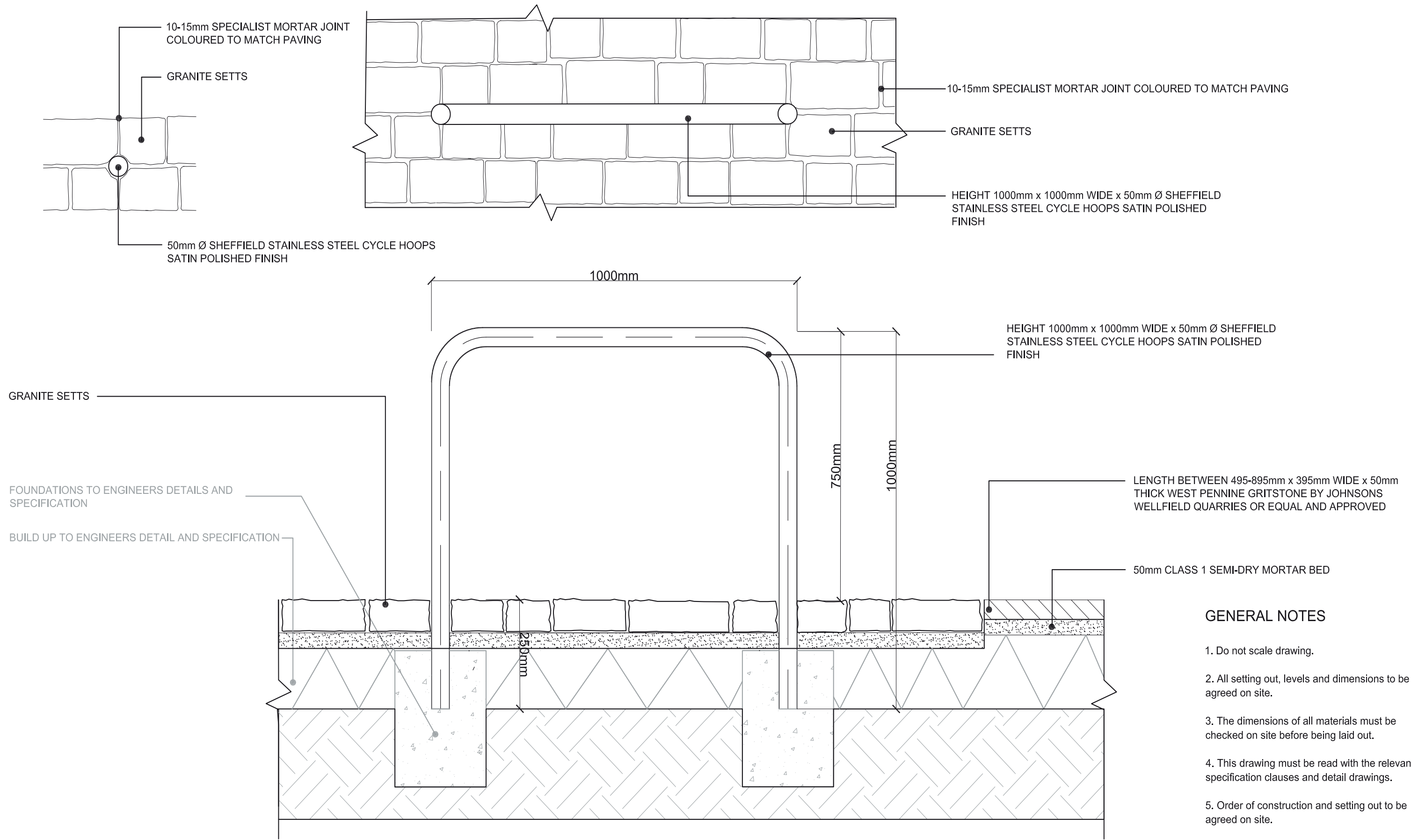
Project	Drawing Title DETAIL 3.03 STEPPED PLANTING DETAIL	Revision	Date	Consultant <div>TOWNSHEND Landscape Architects Unit 3A Zetland House London EC2A 4HJ Telephone: 020 7729 9333 Fax: 020 7729 3300 E-Mail <a href="mailto:lla@townshendla.com">lla@townshendla.com</a></div> 	Project No.	Scale	Approved By	Drawing No.	Revision
KING'S CROSS CENTRAL BUILDING B3		R01 Minor amendment	200411		279.8	1:20	MA		R04
Client KING'S CROSS CENTRAL GENERAL PARTNER LTD		R02 Minor amendment	200511			Date	Drawing Size	Drawn By	TOWN279-8(08)8303
		R03 Paving amended	300611			JULY 11	A3	SM	
		R04 Issue date amended	290711						











GENERAL NOTES

1. Do not scale drawing.
2. All setting out, levels and dimensions to be agreed on site.
3. The dimensions of all materials must be checked on site before being laid out.
4. This drawing must be read with the relevant specification clauses and detail drawings.
5. Order of construction and setting out to be agreed on site.

BE SAFE

Project	Drawing Title	Revision	Date	Consultant	Project No.	Scale	Approved By	Drawing No.	Revision
KING'S CROSS CENTRAL BUILDING B3	DETAIL 4.02 CYCLE STAND INTERFACE WITH GRANITE SETTS	R01 Bedding updated	200411	TOWNSHEND Landscape Architects Unit 3A Zetland House London EC2A 4HJ Telephone: 020 7729 9333 Fax: 020 7729 3300 E-Mail tla@townshendla.com	279.8	1:10	MA	TOWN279-8(08)8402	R03
Client KING'S CROSS CENTRAL GENERAL PARTNER LTD		R02 Minor amendment	200511		Date	Drawing Size	Drawn By		
		R03 Issue date changed	290711		JULY 11	A3	SM		



## Substitute Drawings for Approval

---

2.3

