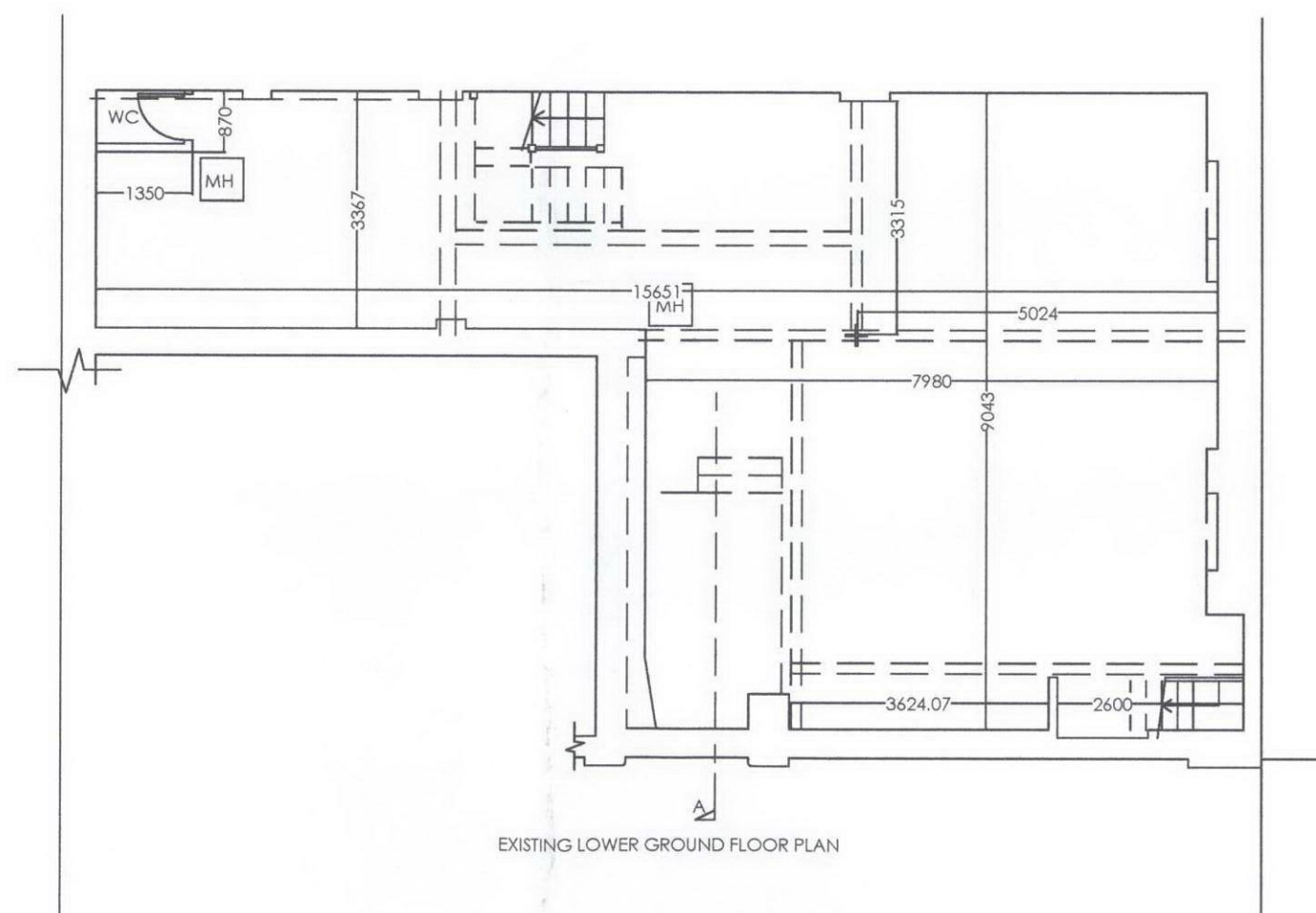


RECEIVED  
22 NOV 2012



EXISTING LOWER GROUND FLOOR

REV.	DATE	DESCRIPTION	REV.	DATE	DESCRIPTION	NOTE:	CLIENT:	PROJECT:	DATE:	NOVEMBER 2012
-	-	-	-	-	-	ALL DIMENSIONS ARE IN MILLIMETERS. INCONSISTENCIES ARE TO BE REPORTED TO THE ARCHITECT IMMEDIATELY.	ENGLISH ROSE ESTATES LTD 70 CHARLOTTE STREET LONDON W1T 4QG	ADDITIONAL FLOOR TO PLANNING APPROVED SCHEME FROM CHANGE OF USE OF EXISTING OFFICES TO FLATS. PLANNING REF: 2011/5279/P	DRAWN BY:	RA
-	-	-	-	-	-	COPYRIGHT IS HELD BY SIMON MILLER ARCHITECTS LTD	SITE:	DRAWING TITLE:	SCALE:	1:100 @ A3
-	-	-	-	-	-		11-12 TOTTENHAM MEWS LONDON W1T 4AG	EXISTING LOWER GROUND FLOOR PLAN	DRAWING NO.:	REVISION:
-	-	-	-	-	-				311-EX00	*

**Simon Miller Architects Ltd**  
12 Forres Gardens  
Temple Fortune  
London NW11 7EX  
Tel: 020 8201 9875  
Fax: 020 8201 9877  
Web: [simonmillerarchitects.com](http://simonmillerarchitects.com)  
Email: [info@simonmillerarchitects.com](mailto:info@simonmillerarchitects.com)