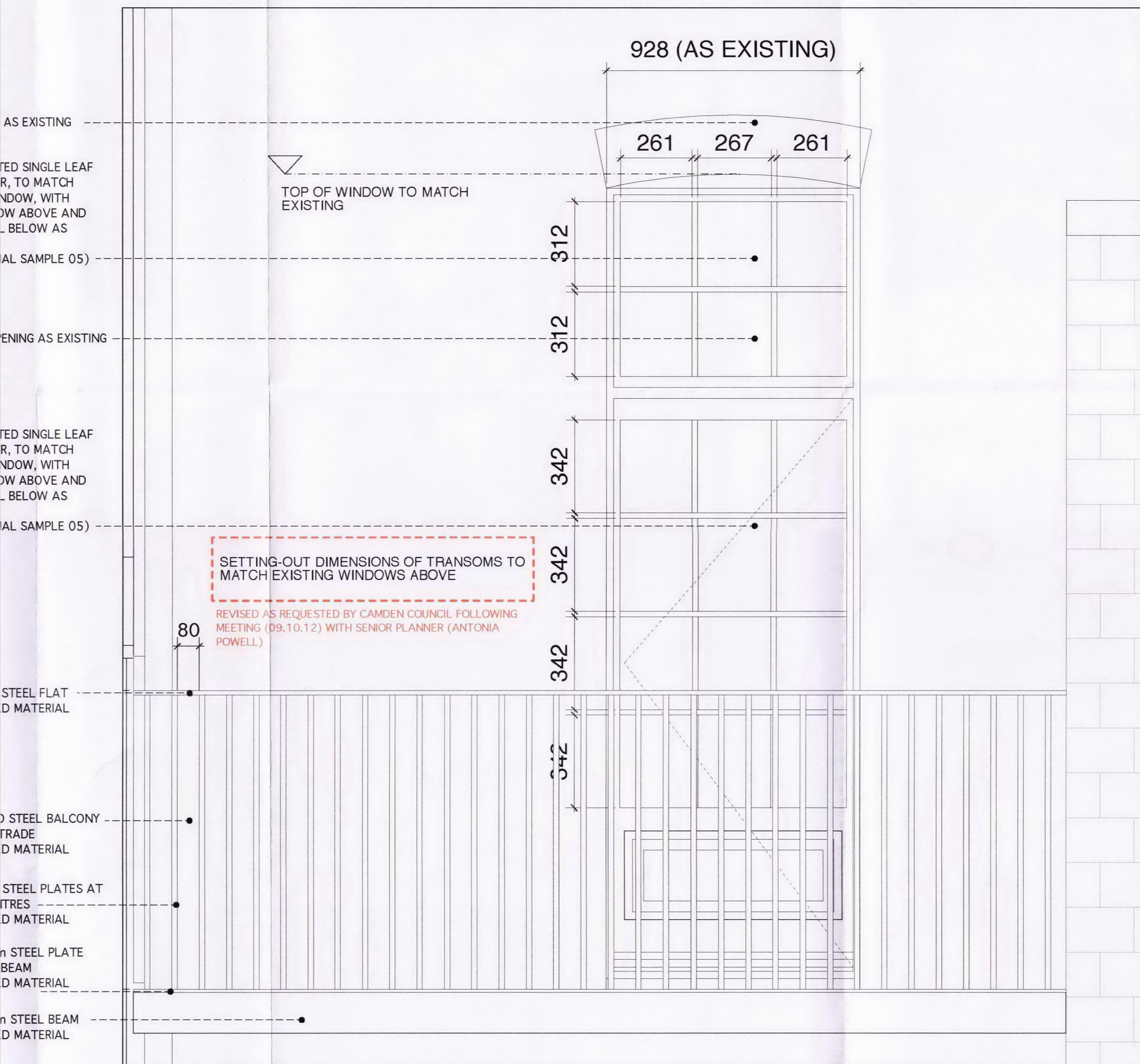


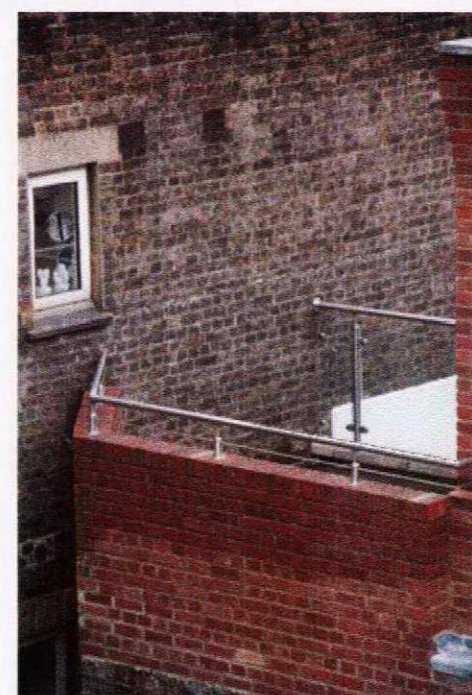
2 REAR ELEVATION  
1:20 @ A0



1 REAR ELEVATION  
1:10 @ A0



EXAMPLE OF DARK FRAMED WINDOW WITHIN SLATE CLAD EXTENSION.  
PHOTO TAKEN FROM ROOF OF 33 GRAFTON WAY



GLAZED BALUSTRADE WITH BRUSHED ALUMINIUM / GALVANISED STEEL HANDRAILS.  
PHOTO TAKEN FROM ROOF OF 33 GRAFTON WAY



GALVANISED METAL WITHIN REAR COURTYARD  
PHOTO TAKEN FROM ROOF OF 33 GRAFTON WAY



ENGINEERED SLATE CLADDING (MARLEY ETERNITE)  
(SEE MATERIAL SAMPLE 03)



WHITE PAINTED SINGLE LEAF TIMBER DOOR, TO MATCH EXISTING WINDOW, WITH FIXED WINDOW ABOVE AND SOLID PANEL BELOW AS REQUESTED  
(SEE MATERIAL SAMPLE 05)

DEPTH OF REVEAL AND FRAME TO MATCH EXISTING

ENGINEERED SLATE CLADDING (MARLEY ETERNITE)  
(SEE MATERIAL SAMPLE 03)

REVISED AS REQUESTED BY CAMDEN COUNCIL FOLLOWING MEETING (09.10.12) WITH SENIOR PLANNER (ANTONIA POWELL)

WHITE PAINTED SINGLE LEAF TIMBER DOOR, TO MATCH EXISTING WINDOW, WITH FIXED WINDOW ABOVE AND SOLID PANEL BELOW AS REQUESTED  
(SEE MATERIAL SAMPLE 05)

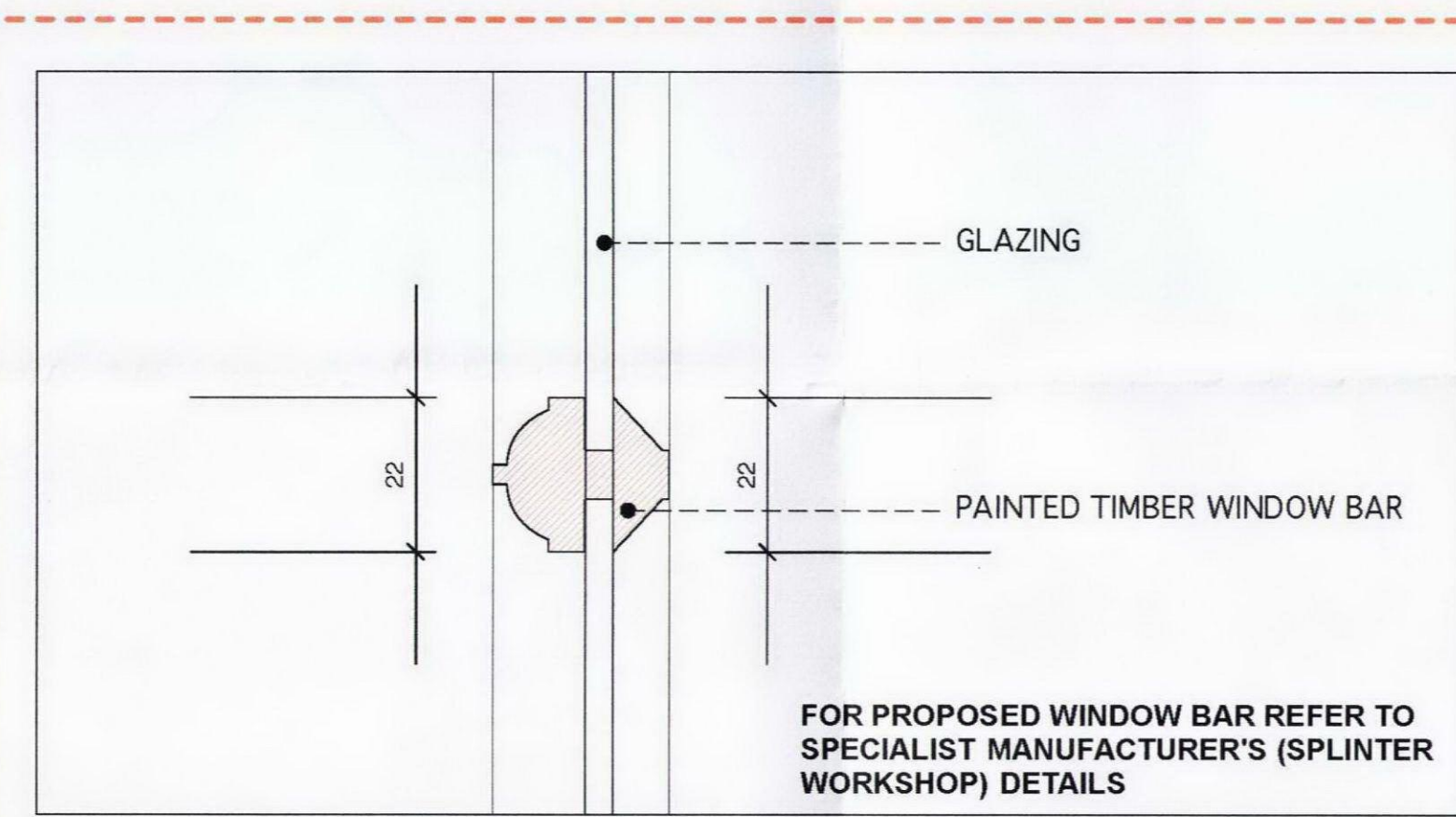
GALVANISED STEEL BALCONY AND BALUSTRADE  
(MATERIAL SAMPLE 06)

30 X 20mm STEEL PLATES AT 100mm CENTRES  
(GALVANISED MATERIAL SAMPLE 06)

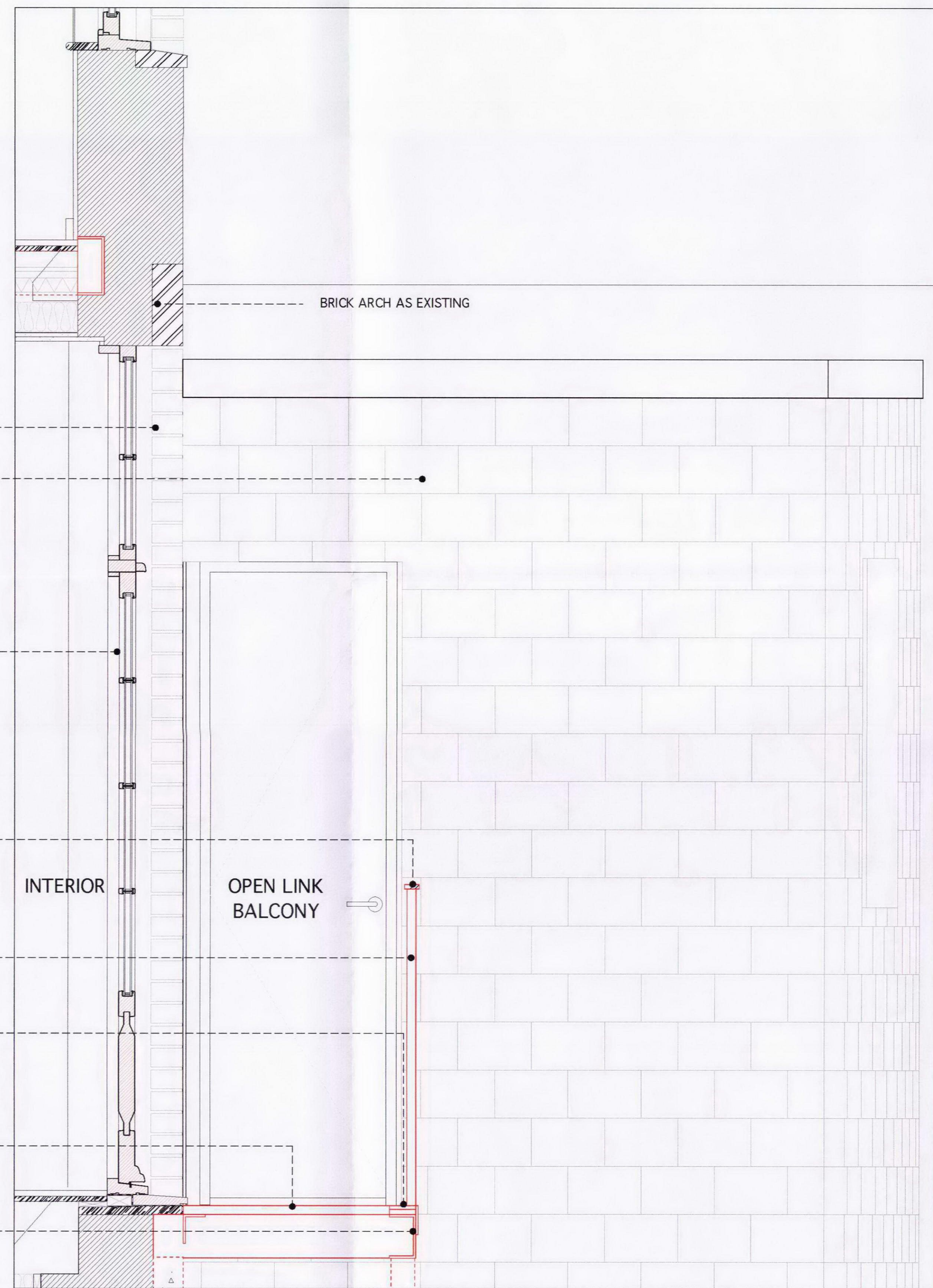
100 X 12mm STEEL PLATE BOLTED TO BEAM  
(GALVANISED MATERIAL SAMPLE 06)

30mm STEEL GRATING  
(GALVANISED MATERIAL SAMPLE 06)

150 X 90mm STEEL PFC  
(GALVANISED MATERIAL SAMPLE 06)



04 EXISTING SASH WINDOW WINDOW BAR - PLAN DETAIL  
1:1 @ A0



03 SECTION THROUGH 1ST FLOOR REAR BALCONY AND EXTENSION AS REQUESTED  
1:10 @ A0

MATERIAL SAMPLE 1:  
BRUSHED STAINLESS STEEL ARCHITRAVE

MATERIAL SAMPLE 2:  
ALUMINIUM FRAMED SLIDING GLASS DOORS  
(FINELINE ALUMINIUM)

MATERIAL SAMPLE 3:  
ENGINEERED SLATE CLADDING (RIVENDALE FINISH)  
(MARLEY ETERNITE)

MATERIAL SAMPLE 4:  
WHITE COLOURED BLACK OUT BLIND  
(CONTROLISS)

MATERIAL SAMPLE 5:  
WHITE PAINTED TIMBER FREAMED SINGLE LEAF DOOR

MATERIAL SAMPLE 6:  
GALVANISED STEEL

MATERIAL SAMPLE 7:  
ALUMINIUM FRAMED WINDOW  
(FINELINE ALUMINIUM)

MATERIAL SAMPLE 8:  
EXISTING GLAZING BAR

REVISED AS REQUESTED BY CAMDEN COUNCIL FOLLOWING MEETING (09.10.12) WITH SENIOR PLANNER (ANTONIA POWELL)

## PRELIMINARY FOR INFORMATION ONLY

REVISION	DATE	ISSUE
*	27.06.12	TO LB FOR RELEASE OF PLANNING CONDITIONS
A	23.11.12	TO LB FOR RELEASE OF PLANNING CONDITIONS

NOTE: ALL DRAWINGS BASED ON SURVEY. UPB DOES NOT ACCEPT RESPONSIBILITY FOR THE ACCURACY OF THE DRAWINGS AND CANNOT ACCEPT LIABILITY FOR ANY PROBLEMS IN THE DESIGN AND CONSTRUCTION OF 33 GRAFTON WAY CAUSED BY THEM.

DO NOT SCALE FROM DRAWING. VERIFY ALL DIMENSIONS ON SITE.

Copyright: Urban Projects Bureau. All rights reserved.

REVISION	DATE	ISSUE	REV
A	23.11.12	PLANNING	A

DO NOT SCALE FROM THIS DRAWING - VERIFY ALL DIMENSIONS ON SITE

**PROJECT:** 0007\_33 Grafton Way  
**TITLE:** Proposed Open Deck Link - Details 1 of 2  
**CLIENT:** Paschalis and Eva Loucaides  
**SCALE:** VARIES @ A0  
**DATE CREATED:** 22/05/2012  
**DRAWN:** MZJ / AWS  
**DRAWING:** UPB\_0007\_SK10\_OPEN DECK LINK\_DETAILS 1 OF 2\_REV A

# URBAN PROJECTS BUREAU

www.urbanprojectsbureau.com  
info@urbanprojectsbureau.com

FRAME IS A0 @ 1:30