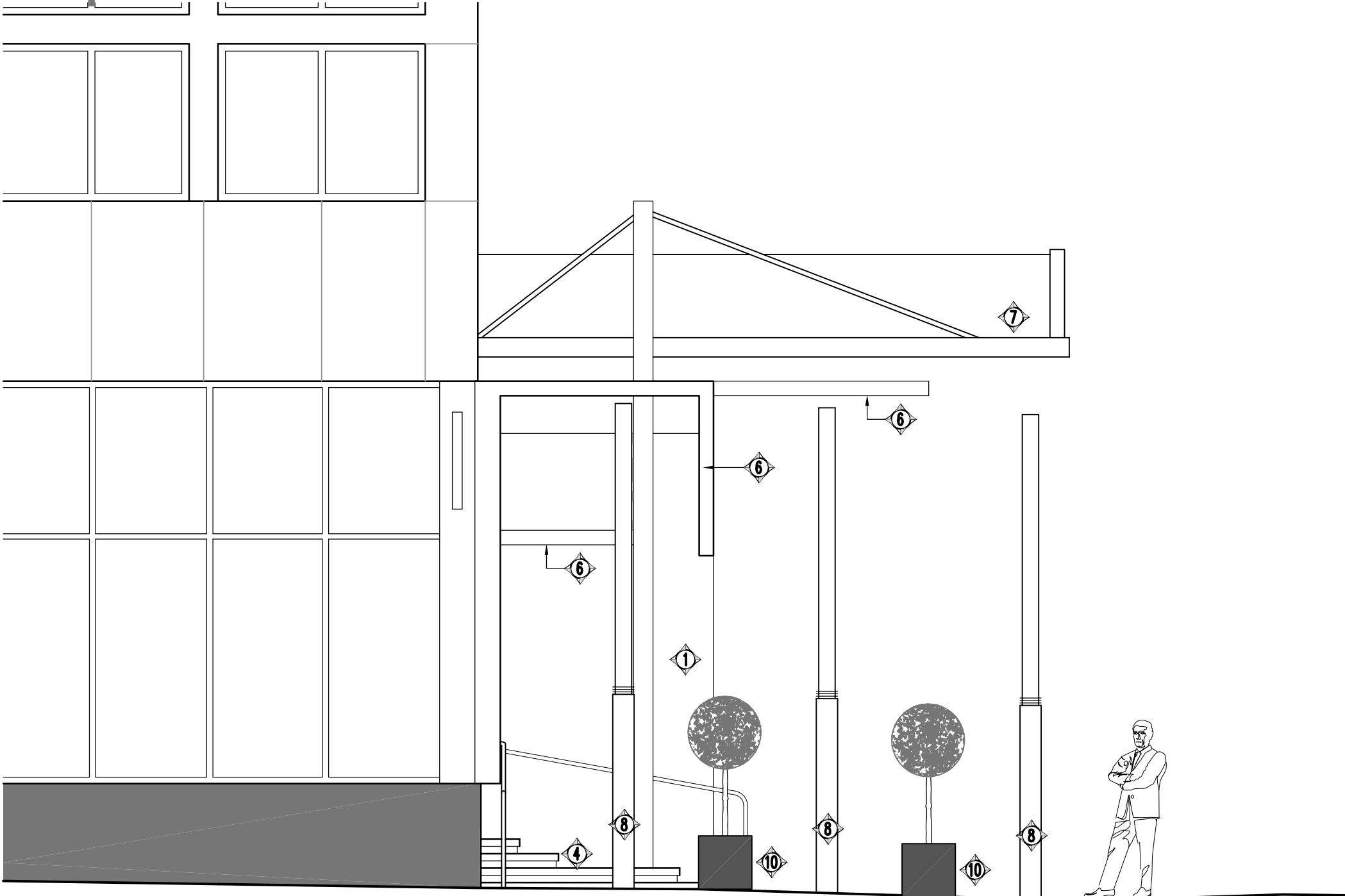


Proposed Hotel Entrance Front Elevation - 1:50 Scale

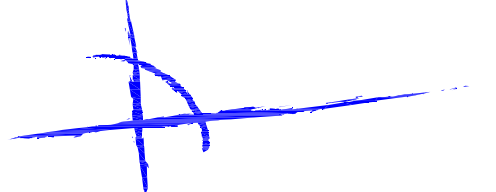


Proposed Hotel Entrance Side Elevation - 1:50 Scale

PROPOSED MATERIALS KEY:	
ITEM NO.	DESCRIPTION & SPECIFICATION
1	NEW FEATURE 'FIN' WALL NEW 4.8m HIGH FEATURE 'FIN' WALLS BUILT NEXT TO DISABLED ACCESS LIFT WITH OPENING FOR PEDESTRIAN ACCESS FINISH - DECORATIVE SPLIT FACED SLATE CLADDING
2	SPLIT FACED SLATE WALL TILE CLADDING TO MATCH FEATURE FIN CLADDING
3	BLACK GRANITE PLINTH CLADDING TO MATCH EXISTING
4	STEPS RATIONALISED NEW FEATURE STEPS BUILT ON TOP OF EXISTING STEPS WITH INCREASED MID LANDING LEVELS. NEW FINISHES TO TREADS (TO MATCH EXTG) AND NEW RISERS & NOSINGS APPLIED. HANDRAIL POSITIONS MODIFIED TO SUIT REVISED LAYOUT.
5	REVISED PAVING NEW EXTERNAL PAVINGS COMPRISING OF 200mm WIDE 'BANDS' OF LIGHT GREY GRANITE STONE BORDERS WITH COLOURED POLISHED CONCRETE PAVINGS BLOCK IN BETWEEN. PAVING ALSO FITTED WITH FLOOR MOUNTED FEATURE LIGHTING.
6	NEW LOW LEVEL CANOPY NEW FEATURE LOW LEVEL CANOPIES INTRODUCED TO MAIN ENTRANCE. FINISH - EXTERNAL GRADE POLISHED PLASTER
7	EXISTING CANOPY TO BE RETAINED WITH NOVOTEL SIGNAGE REMOVED. ADDITION OF ANY NEW SIGNAGE TBC BY THE CLIENT
8	LIGHTING COLUMNS 5000mm TALL STAINLESS STEEL LUMINOUS FEATURE LIGHTING COLUMN - 'NEMO' BY SCHREDER OR SIMILAR
9	NEW SEATING SIMPLE BLACK GRANITE STREET FURNITURE
10	NEW TOPIARY SHAPED HEDGES & BALL TREES WITHIN BLACK GRANITE PLANTING BOXES TO MATCH STREET FURNITURE, TO SEP. SPECIALIST DETAILS/SPEC.

D	Drawing revised in line with latest tender information & landscaping drawing. Updated in line with Access officers comments, dated 29 th October '12. Key updated to suit.	RMW	SA	02.11.12
C	Drawing revised to show current proposals. Notes updated	PS	AF	08.06.12
B	General revisions to drawing and notes	PS	AF	09.05.12
A	Drawing revised to show current proposals. Notes updated. Side Elevation added.	PS	AF	04.05.12
rev	description	drawn	auth	date

DO NOT SCALE OFF THIS DRAWING © LEACH RHODES WALKER 2001



LEACH RHODES WALKER
ARCHITECTS

client
Accor Hotels

project
**Pullman St Pancras
London**

project no ID-7053	drawing no L(00)32	rev D
------------------------------	------------------------------	-----------------

description -
**Proposed
Hotel Entrance
Elevation**

scale 1:50 @ A2	date drawn 01.05.12	drawn by PS	authorised by AF
---------------------------	-------------------------------	-----------------------	----------------------------

purpose of issue
planning ☒ building regs ☐ tender ☐ comment ☐ approval ☐ construction ☐

LEACH RHODES WALKER
Riverside Manchester M3 5AA
t: +44 (0) 161 833 0211 f: +44 (0) 161 832 7757
e: info@lrw.co.uk www.lrw.co.uk