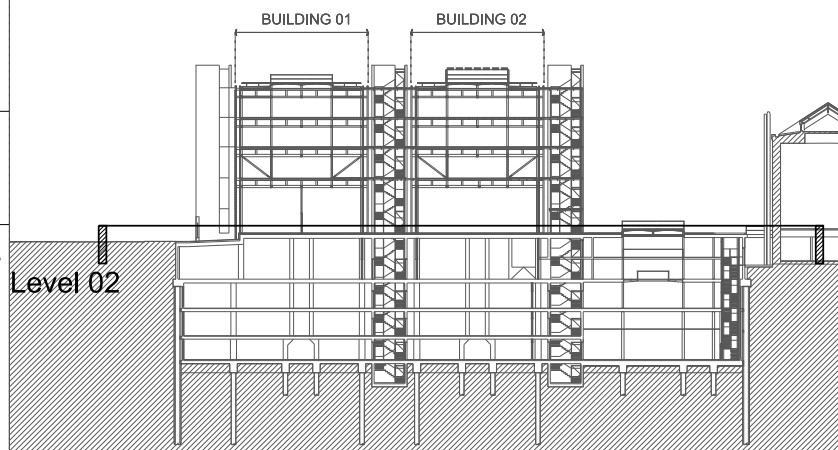


THE
BRITISH
MUSEUM

World Conservation and Exhibitions Centre

Revision	Date	Description
O	10-08-2012	Minor Material Amendments including: 1. Additional Glazed exit from the Special Exhibitions Gallery 2. Building Management Unit located on the roof 3. Revised Flue Locations and Heights 4. Air intake and exhaust trumpets adjacent to Core 2 and 3
P	08-11-2012	New Application: 5. Bells Landing External Link added

Drawing Purpose		
Planning		
Drawn by	Checked by	Authorised by
All	JMc	GS
Do not scale-off this drawing. RSHP take no responsibility for any dimensions obtained, by measuring or scaling from this drawing and no reliance may be placed on such dimensions. If no dimension is given, it is the responsibility of the recipient to ascertain the dimension specifically from the Architect or by site measurement. The sizing of all structural and service elements must always be checked against the relevant engineers drawings. No reliance should be placed upon sizing information shown on this drawing.		



Project	5370 British Museum Rogers Stirk Harbour + Partners
---------	--

Contact	Thames Wharf Rainville Road London W6 9HA tel: 020 7385 1235 fax: 020 7385 8409 email J5370@rsh-p.com www.rsh-p.com
---------	---

Drawing Title	© copyright Rogers Stirk Harbour + Partners, all rights reserved 2009 Proposed Level 2 Plan
---------------	--

Scale @ A1	1:200	Drawing Number	Project - Type - Level - Section Number 5370-FD-PL-02-0156
Drawing Date	Nov 2007	Revision Date	Revision 08-11-2012

P