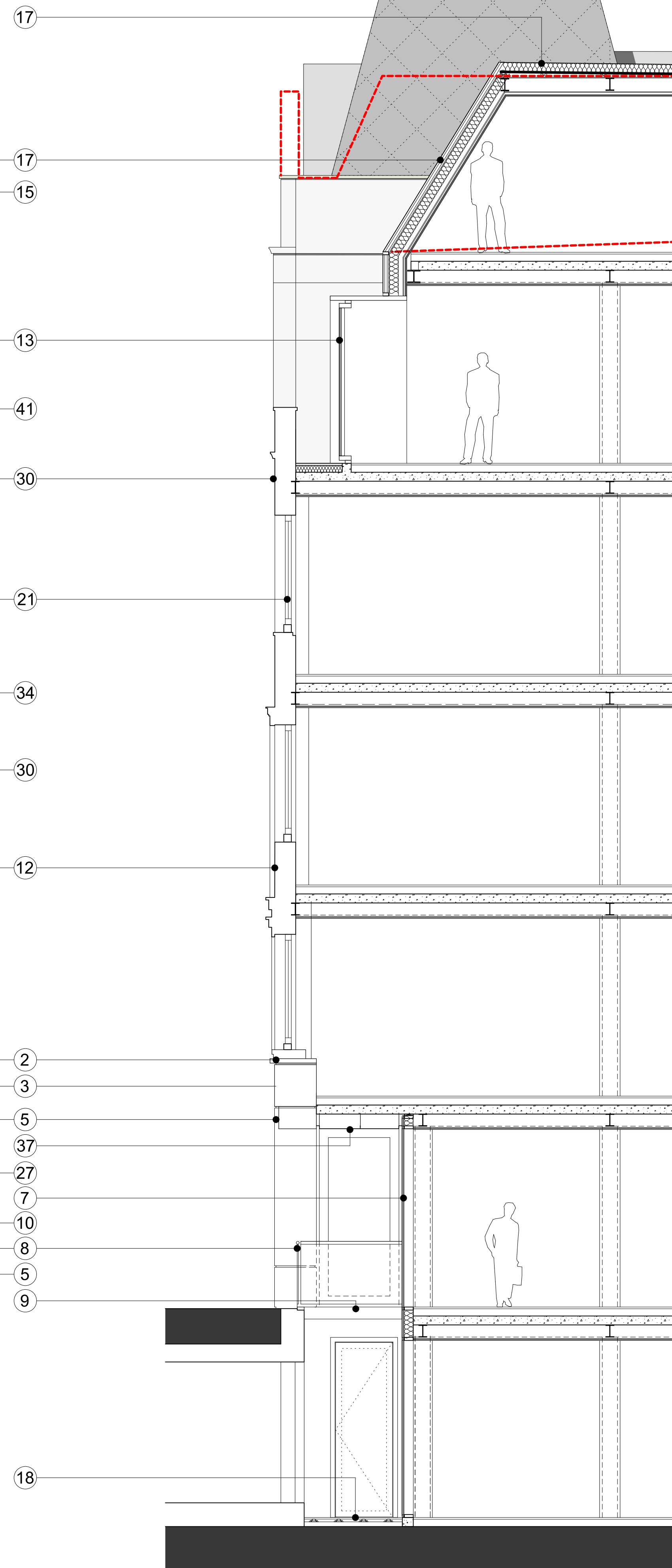


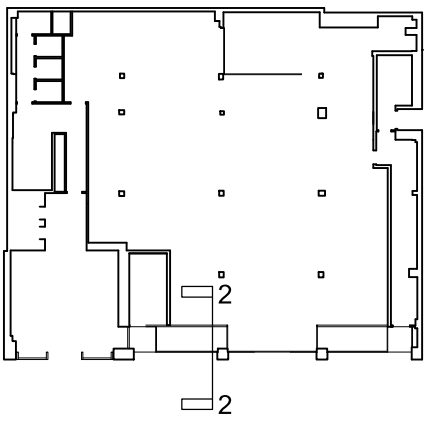


Detail 1: Part North Elevation 11-13 Windmill Street



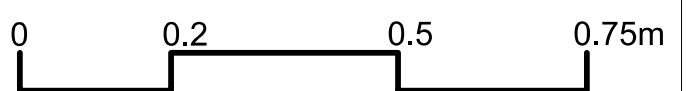
Detail 2: Section through lightwell 11-13 Windmill Street

Notes:



- ① EXISTING BRICKWORK RETAINED AND CLEANED
 - ② NEW STONE CORNICE
 - ③ NEW STONE CLADDING OVER EXISTING STRUCTURE
 - ④ NEW METAL PANELLING
 - ⑤ NEW METAL CLADDING
 - ⑥ NEW INTEGRATED BUILDING SIGNAGE
 - ⑦ NEW CAPLESS FLUSH GLASS FACADE
 - ⑧ NEW CLEAR GLAZED BALUSTRADE
 - ⑨ NEW LINK BRIDGES
 - ⑩ NEW PICTURE BAY WINDOWS
 - ⑪ NEW CLEAR GLASS AUTOMATIC SLIDING DOORS
 - ⑫ EXISTING BRICKWORK RETAINED, CLEANED AND SOOT WASHED
 - ⑬ NEW DORMER WINDOWS
 - ⑭ EXISTING COPERS RETAINED AND CLEANED
 - ⑮ NEW GLAZED SLOT WINDOW
 - ⑯ NEW METAL LOUVERS
 - ⑰ NEW METAL SHINGLES
 - ⑱ NEW TERRACE DECKING
 - ⑲ NEW LEIGHTWEIGHT STEEL STAIRCASE
 - ⑳ NEW METAL ROOF
 - ㉑ NEW REPLACEMENT TIMBER DOUBLE GLAZED WINDOWS
 - ㉒ EXISTING STAIRS REFURBISHED
 - ㉓ EXISTING RENDER CLEANED
 - ㉔ EXISTING PEDIMENT AND PARAPET WALL REMOVED NEW CAST STONE BALUSTRADE BUILT
 - ㉕ NEW RENDER PAINT
 - ㉖ NEW TIMBER WINDOWS WITH NEW OPENINGS
 - ㉗ NEW GLAZED DOOR
 - ㉘ NEW ACOUSTIC LOUVERS TO PLANT ENCLOSURE
 - ㉙ EXISTING WINDOW INCREASED IN HEIGHT
 - ㉚ EXISTING STONE DETAILS RETAINED AND CLEANED WITH NEW RENDER PAINT FINISH
 - ㉛ EXISTING WINDOWS REPLACED WITH LOUVERS
 - ㉜ EXISTING UKPN SUBSTATION
 - ㉝ EXISTING ROOFLIGHT RAISED AND REFURBISHED
 - ㉞ EXISTING RWP'S REPLACED WITH NEW TO MATCH
 - ㉟ NEW GLAZED ENTRANCE DOORS (SECONDARY ENTRANCE)
 - ㊱ NEW METAL PORTAL FRAME
 - ㊲ NEW METAL PANELLING TO SOFFIT AND WALLS OF LIGHTWELL WITH LED STRIP LIGHTS
 - ㊳ NEW DOOR FOR ACCESS TO PLANT DECK
 - ㊴ EXISTING BALUSTRADE RETAINED AND REFURBISHED
 - ㊵ NEW FRITTED GLAZED BALUSTRADE
 - ㊶ NEW COPERS TO MATCH EXISTING
- GENERAL NOTES:
- ALL EXISTING WINDOWS REPLACED WITH NEW WINDOWS TO MATCH
 - EXISTING BRICK FACADES RETAINED AND CLEANED
- OUTLINE OF EXISTING BUILDING ROOF

07.12.12 ISSUED FOR PLANNING



Revision:

ORMS

Architecture
Design

1 Pine Street London EC1R 0JH
T 0207 833 8533 F 0207 837 7575
E orms@orms.co.uk

Project 11-14 Windmill Street

Drawing title Proposed Detail Part-Elevation
North No.11-13

Scale 1:50 @ A1/1:100 @ A3 Drwg. No.

Date Nov 2012 **1959 PL 41** Rev. -

Status ☒ For information ☐ For tender ☐ For construction

Do not scale. All dimensions to be confirmed on site.
Information contained in this drawing is the sole copyright of ORMS Designers & Architects Ltd.
and is not to be reproduced without permission.