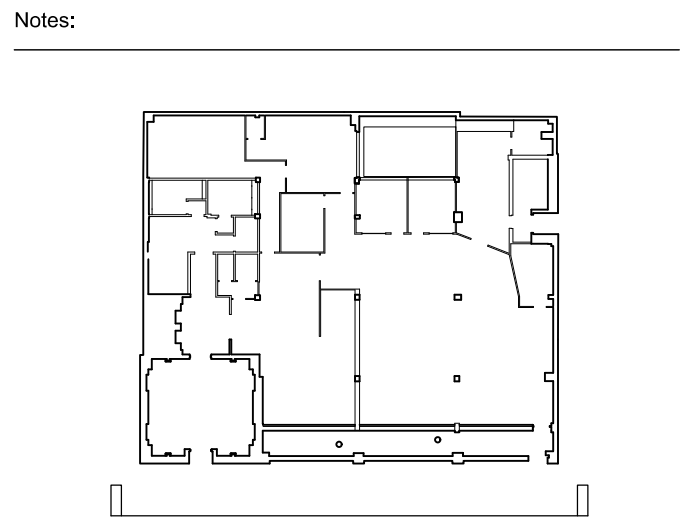


Detail 1: Elevation of Lightwell at Ground / Lower Ground



07.12.12 ISSUED FOR PLANNING

0 2 5 7.5m

Revision:

ORMS  
Architecture  
Design

1 Pine Street London EC1R 0JH  
T 0207 833 8533 F 0207 837 7575  
E orms@orms.co.uk

Project 11-14 Windmill Street

Drawing title Existing North Elevation  
Windmill Street Elevation

Scale 1:100 @ A1/1:200 @ A3 Drwg. No. 1959 PL 12 Rev. -

Date Nov 2012

Status ☒ For information ☐ For tender ☐ For construction

Do not scale. All dimensions to be confirmed on site.  
Information contained in this drawing is the sole copyright of ORMS Designers & Architects Ltd.  
and is not to be reproduced without permission.