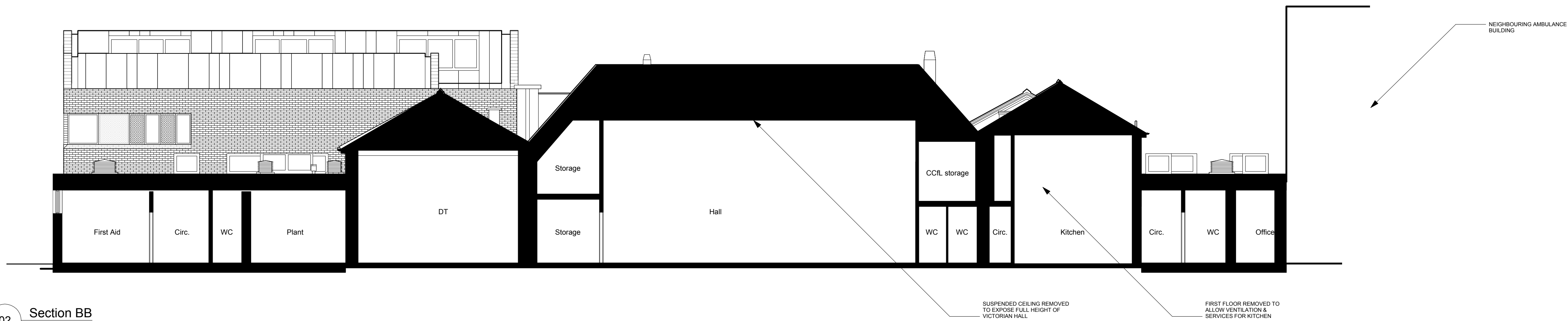
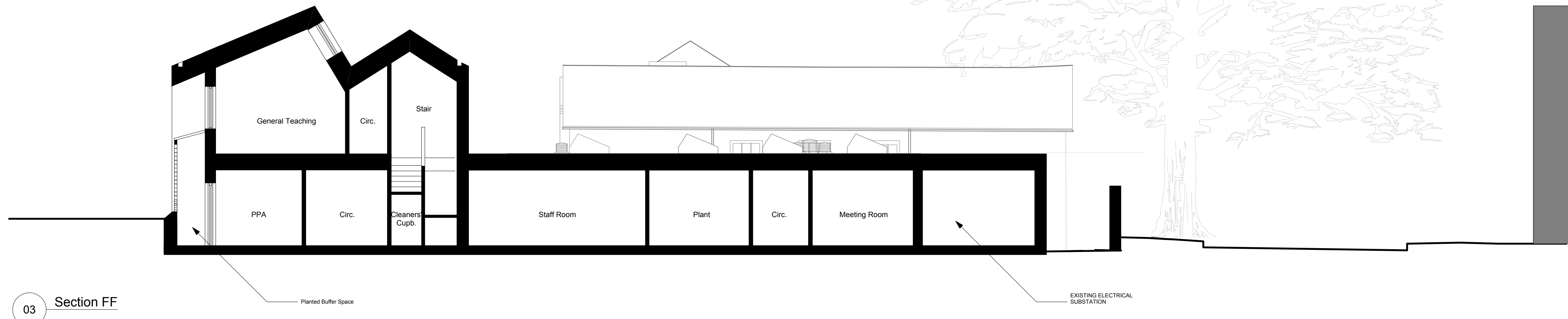


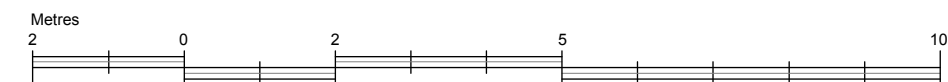
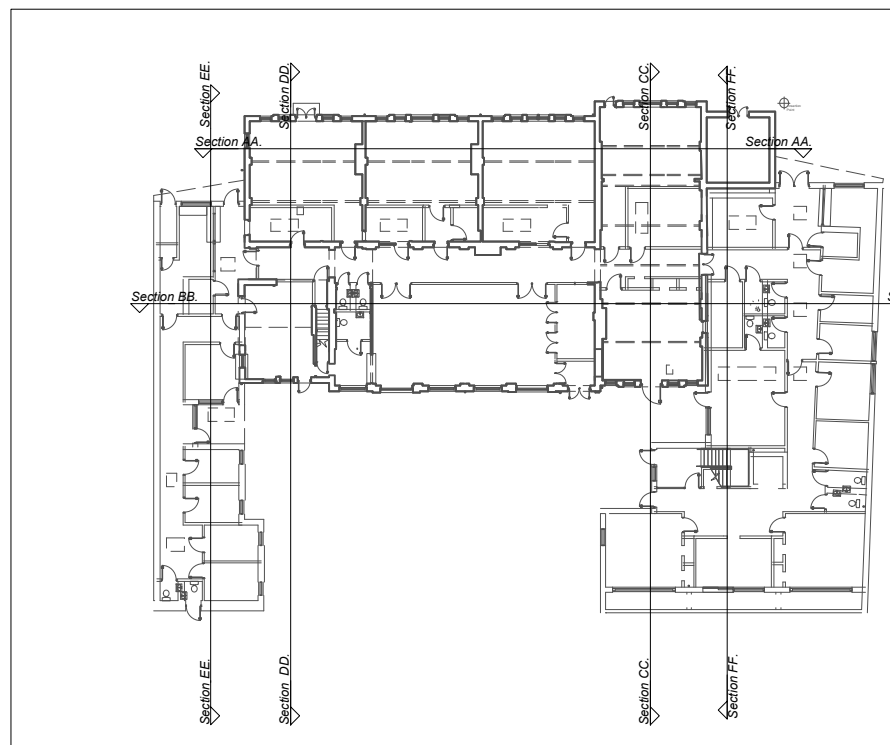
01 Section AA



02 Section BB



03 Section FF



CHECK THIS DRAWING IS THE LATEST REVISION

THIS DRAWING SHOULD BE READ IN CONJUNCTION WITH ALL RELEVANT DRAWINGS, SPECIFICATIONS, SCHEDULES AND OTHER CONTRACT INFORMATION ISSUED BY THE ARCHITECT, STRUCTURAL ENGINEER, SERVICES ENGINEER AND ANY OTHER CONSULTANT EMPLOYED OR RETAINED BY THE EMPLOYER IN RESPECT OF THESE WORKS.

ALL DIMENSIONS SHOWN ARE TO THE FACE OF MASONRY, METAL OR TIMBER STUD FRAMING, OR THE CENTRE LINE OF STRUCTURAL OR TIMBER MEMBERS STEEL MEMBERS, UNLESS NOTED OTHERWISE.

DO NOT SCALE FROM THIS DRAWING.

REPORT ANY DISCREPANCIES, CONFLICTS, ERRORS OR OMISSIONS TO THE CA AND SEEK DIRECTIONS BEFORE PROCEEDING

CONFIRM ALL DIMENSIONS AND LEVELS ON SITE PRIOR TO COMMENCING WORK. IF IN DOUBT ASK!

DO NOT USE ANY AREAS INDICATED FOR EITHER VALUATION, PURCHASE SALE OR ANY OTHER FORM OF LEGALLY BINDING CONTRACT.

DO NOT REPRODUCE ANY PART OF THIS DRAWING WITHOUT PRIOR WRITTEN CONSENT. THIS DRAWING REMAINS THE COPYRIGHT OF ARCHITYPE LTD.

Status	PLANNING		
<div>ARCHITYPE</div> <div>The Morocco Store, 18 Leathermarket Street, London SE1 3JA 1 020 7403 2889 1 020 7407 5283 e london@architype.co.uk www.architype.co.uk</div>			
Project	CCFL - AGINCOURT HOUSE		
Client	CAMDEN COUNCIL		
Dwg Title	PROPOSED SECTIONS 1/2		
Dwg No.	AG-PL850	Revision	P1
Scales	1:100@A1	Date	OCT 2012
Drawn by	CM	Checked by	IH

Revisions P1 - 18.12.12 Minor level amendments. Note altered.