

01 Existing Windows Typical External Elevation  
1:20 @ A1

Existing white painted timber sash window

Brick infill to window opening

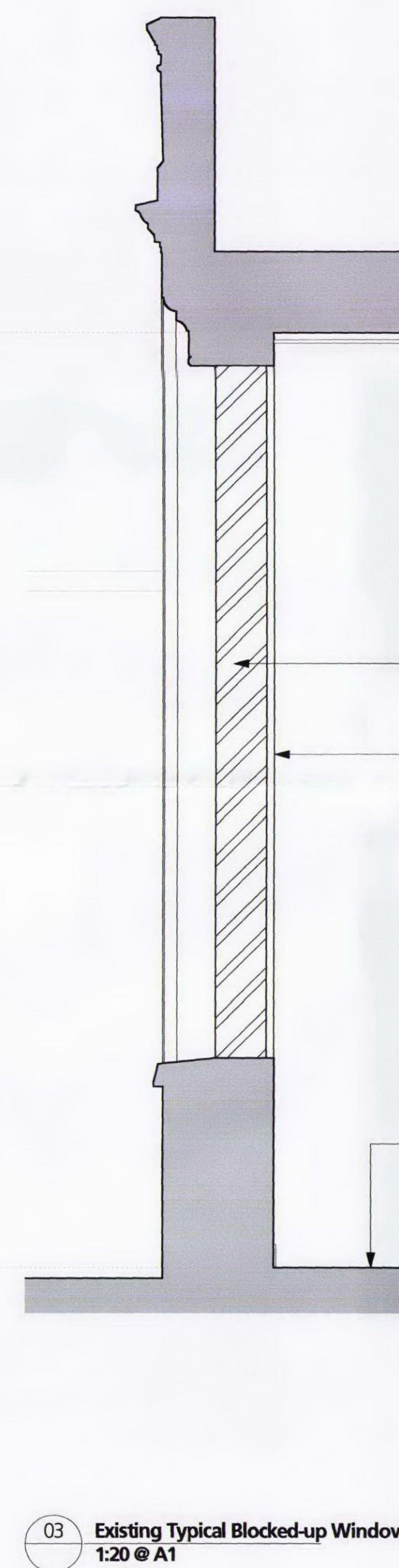


02 Existing Windows Typical Internal Elevation  
1:20 @ A1

Existing white painted timber sash window with aluminium framed secondary glazing (painted white) and venetian blinds, within cavity (metallic silver).

Bricked-up window opening with joint on finished plaster.

Existing Carpet on concrete floor slab



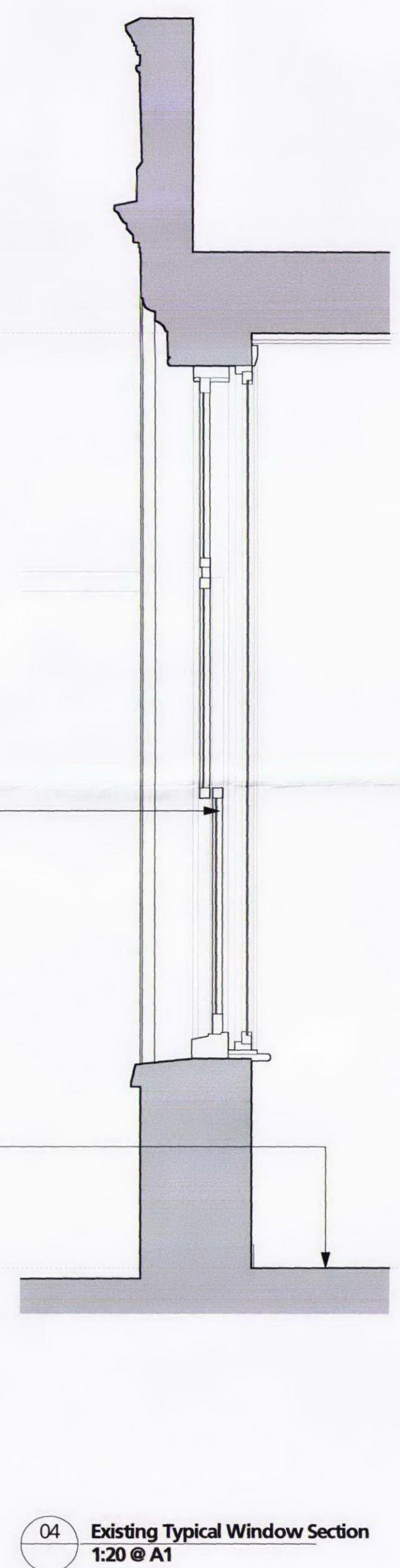
03 Existing Typical Blocked-up Window Section  
1:20 @ A1

Brick infill to window opening

Plaster lining

Existing white painted timber sash window with aluminium framed secondary glazing (painted white) and venetian blinds, within cavity (metallic silver).

Existing Carpet on concrete floor slab



04 Existing Typical Window Section  
1:20 @ A1

U/S Existing Slab  
+4.000 approx

Existing Floor Level  
+0.000

0 1 2 3 4 5 metres

Revision	Date	Amendment
P1	28.11.12	Issued for Planning, Listed Building and Conservation Area Consent

Notes

NO DIMENSIONS ARE TO BE SCALED FROM THIS DRAWING. THE CONTRACTOR/MANUFACTURER IS RESPONSIBLE FOR CHECKING ALL DIMENSIONS AND QUERING ANY DISCREPANCIES. THE DRAWING IS THE PROPERTY OF BDA ARCHITECTS LTD. COPYRIGHT IS RESERVED BY THEM AND THE DRAWING IS LOANED ON CONDITION THAT IT IS NOT COPIED, REPRODUCED, RETAINED OR DISCLOSED TO ANY UNAUTHORISED PERSON, EITHER WHOLLY OR IN PART, WITHOUT WRITTEN CONSENT.

Client	University College London		
Project	Cruciform Student Hub Project		
Drawing	Existing Windows - Typical Elevation & Section	burwell deakins : architects	
Scale	1:20 @ A1	Status	PLANNING
Date	NOV 2012	Drawn	PF
Project N°	494	Drawing N°	494/PL/065
		Revision	P1
			t 020 8305 6010 f 020 8305 6020 e info@burwellarchitects.com w www.burwellarchitects.com a unit 001 california building deals gateway london SE13 7SF