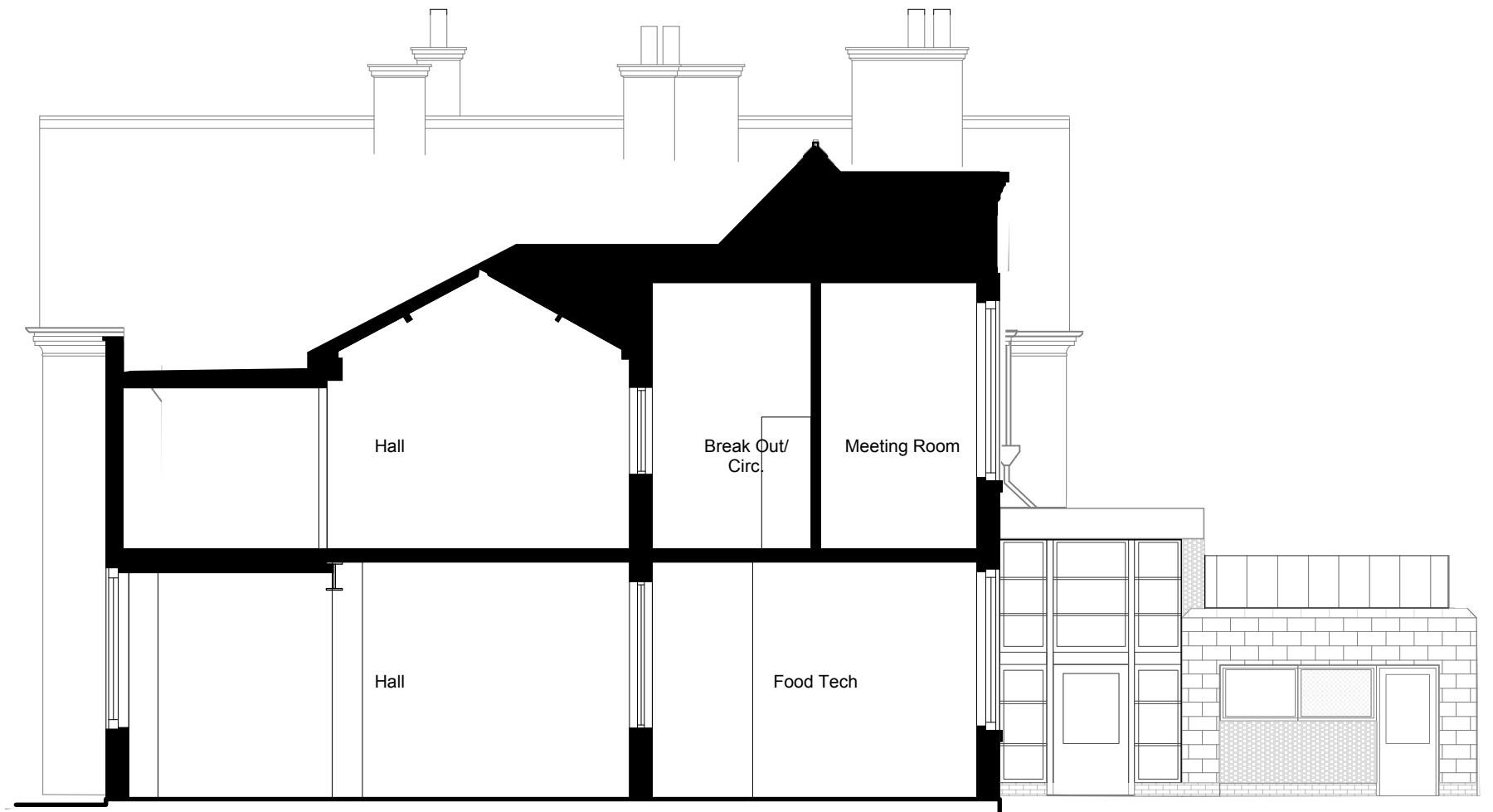
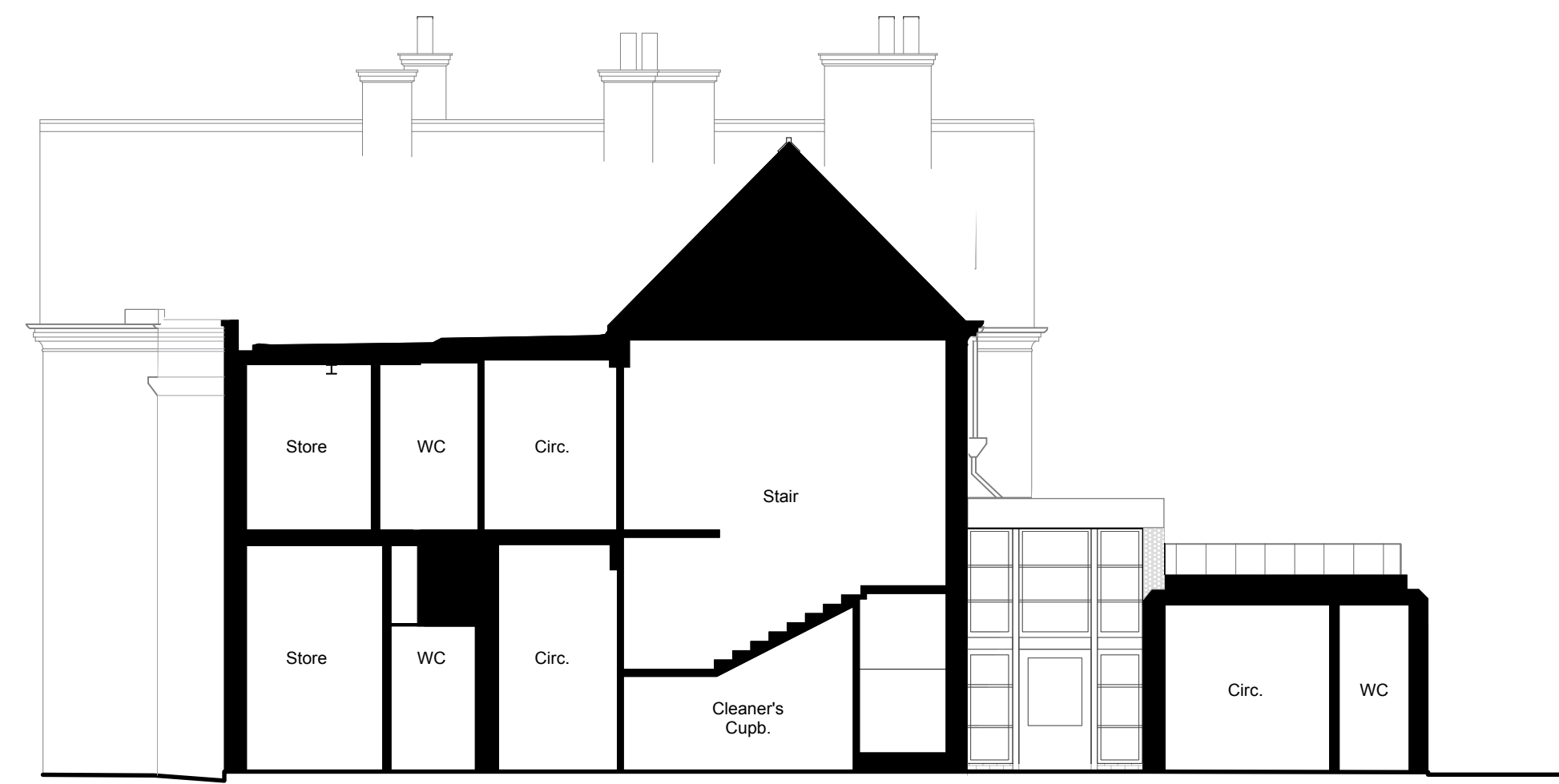




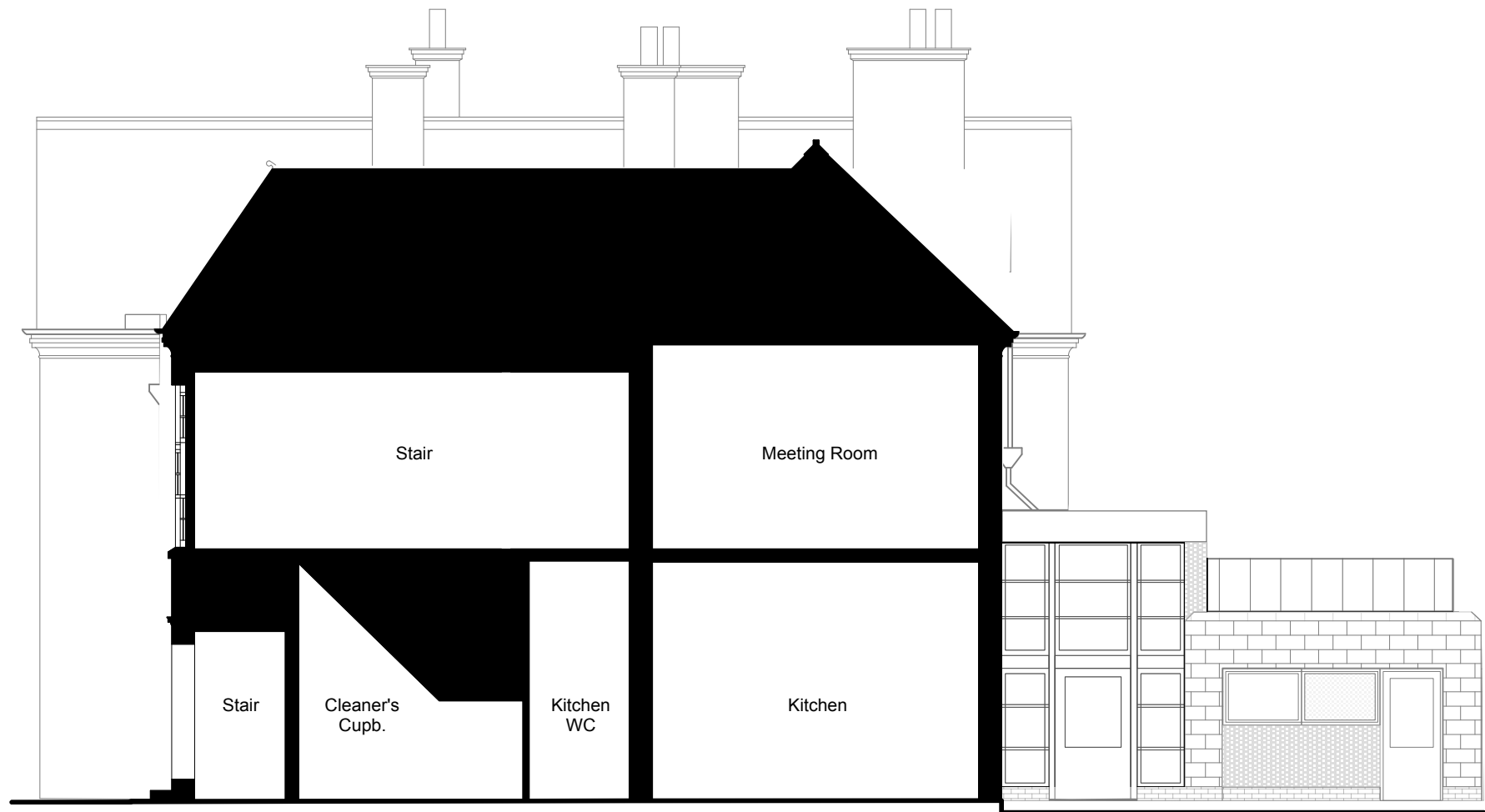
01 Section DD



02 Section BB



03 Section CC



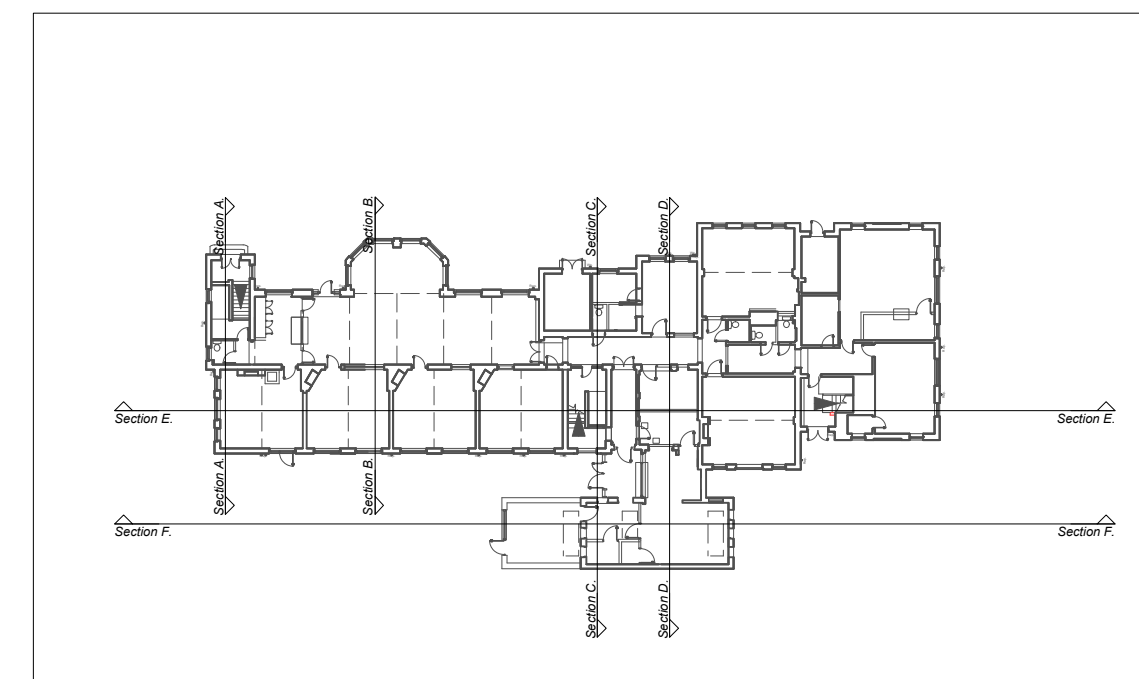
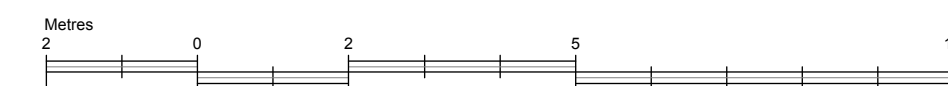
04 Section AA



05 Section EE



06 Section FF



CHECK THIS DRAWING IS THE LATEST REVISION

THIS DRAWING SHOULD BE READ IN CONJUNCTION WITH ALL RELEVANT DRAWINGS, SPECIFICATIONS, SCHEDULES AND OTHER CONTRACT INFORMATION ISSUED BY THE ARCHITECT, STRUCTURAL ENGINEER, SERVICES ENGINEER AND ANY OTHER CONSULTANT EMPLOYED OR RETAINED BY THE EMPLOYER IN RESPECT OF THESE WORKS.

ALL DIMENSIONS SHOWN ARE TO THE FACE OF MASONRY, METAL OR TIMBER STUD FRAMING, OR THE CENTRE LINE OF STRUCTURAL OR TIMBER MEMBERS STEEL MEMBERS, UNLESS NOTED OTHERWISE.

DO NOT SCALE FROM THIS DRAWING.

REPORT ANY DISCREPANCIES, CONFLICTS, ERRORS OR OMISSIONS TO THE CA AND SEEK DIRECTIONS BEFORE PROCEEDING.

CONFIRM ALL DIMENSIONS AND LEVELS ON SITE PRIOR TO COMMENCING WORK. IF IN DOUBT ASK!

DO NOT USE ANY AREAS INDICATED FOR EITHER VALUATION, PURCHASE SALE OR ANY OTHER FORM OF LEGALLY BINDING CONTRACT.

DO NOT REPRODUCE ANY PART OF THIS DRAWING WITHOUT PRIOR WRITTEN CONSENT. THIS DRAWING REMAINS THE COPYRIGHT OF ARCHITYPE LTD.

Revisions

Status PLANNING

ARCHITYPE

The Morocco Store, 18 Leathermarket Street, London SE1 3JA
1 020 7403 2989 1 020 7407 5283 e london@architype.co.uk www.architype.co.uk

Project CCFL - CHALCOT SCHOOL

Client CAMDEN COUNCIL

Dwg Title PROPOSED SECTIONS

Dwg No. CH-PL850

Revision -

Scales 1:100@A1

Date OCT 2012

Drawn by CM

Checked by IH