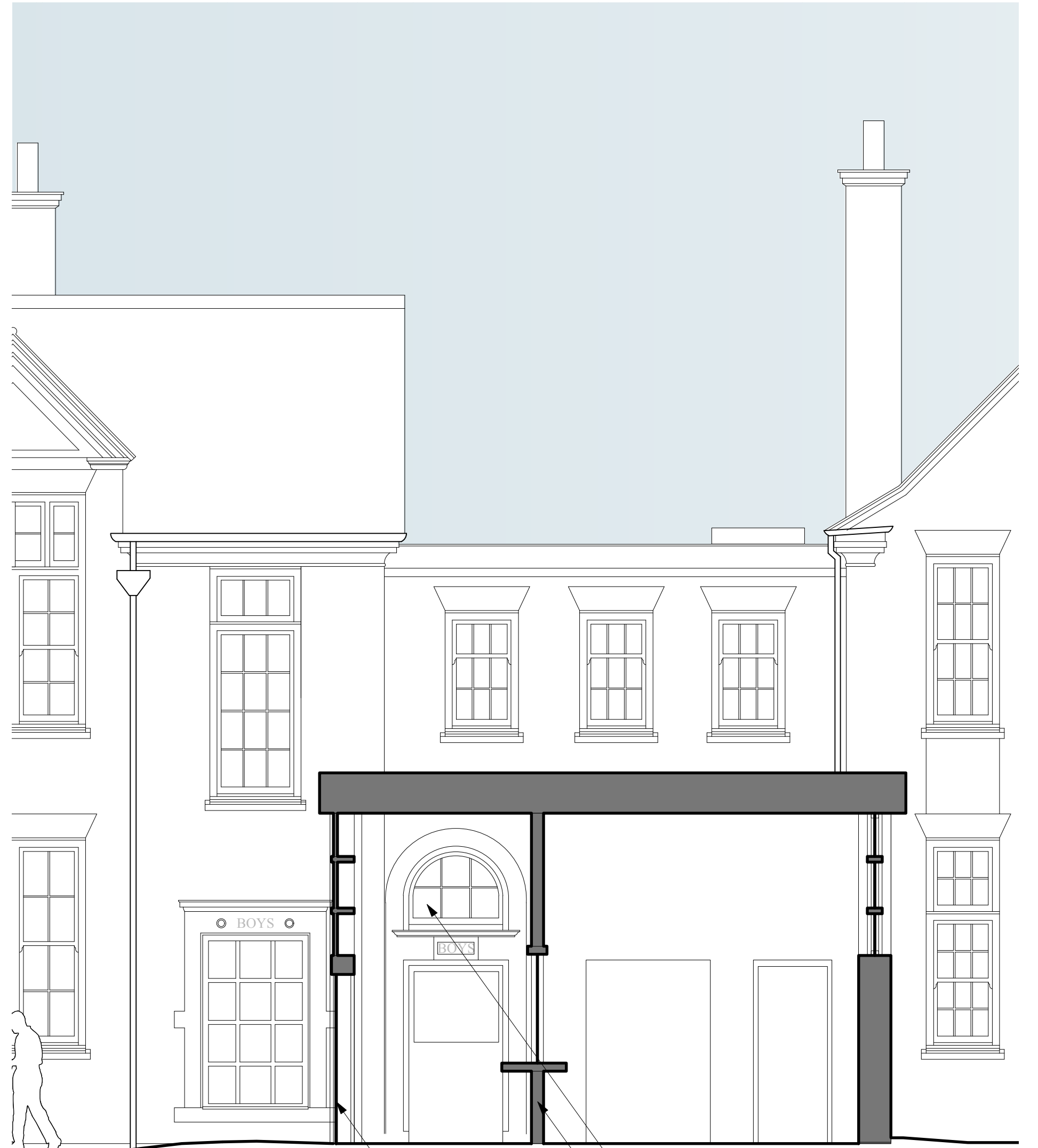
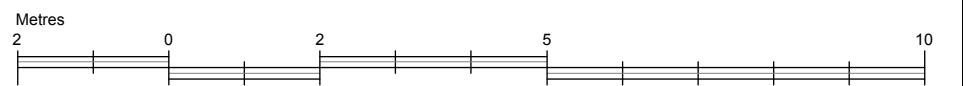




01 South Elevation



02 South 2 Elevation



CHECK THIS DRAWING IS THE LATEST REVISION

THIS DRAWING SHOULD BE READ IN CONJUNCTION WITH ALL RELEVANT DRAWINGS, SPECIFICATIONS, SCHEDULES AND OTHER CONTRACT INFORMATION ISSUED BY THE ARCHITECT, STRUCTURAL ENGINEER, SERVICES ENGINEER AND ANY OTHER CONSULTANT EMPLOYED OR RETAINED BY THE EMPLOYER IN RESPECT OF THESE WORKS.

ALL DIMENSIONS SHOWN ARE TO THE FACE OF MASONRY, METAL OR TIMBER STUD FRAMING, OR THE CENTRE LINE OF STRUCTURAL OR TIMBER MEMBERS STEEL MEMBERS, UNLESS NOTED OTHERWISE.

DO NOT SCALE FROM THIS DRAWING.

REPORT ANY DISCREPANCIES, CONFLICTS, ERRORS OR OMISSIONS TO THE CA AND SEEK DIRECTIONS BEFORE PROCEEDING

CONFIRM ALL DIMENSIONS AND LEVELS ON SITE PRIOR TO COMMENCING WORK. IF IN DOUBT ASK!

DO NOT USE ANY AREAS INDICATED FOR EITHER VALUATION, PURCHASE SALE OR ANY OTHER FORM OF LEGALLY BINDING CONTRACT.

DO NOT REPRODUCE ANY PART OF THIS DRAWING WITHOUT PRIOR WRITTEN CONSENT. THIS DRAWING REMAINS THE COPYRIGHT OF ARCHITYPE LTD.

KEY:

Pale Render

Glazed Tile

Grey Engineering Brick

Window Ventilation Grille

Zinc Finish to Roof/Fascia

NOTE:

1. All existing grilles are being removed from the windows
2. Existing timber window frames with single glazing to be reglazed with double glazing
3. Existing downpipes replaced with new anti-climb downpipes, existing hoppers retained

Revisions P1 - 18.12.12 Chamfered tile edge replaced with vertical edge.

Status	PLANNING		
ARCHITYPE			
The Morocco Store, 18 Leathermarket Street, London SE1 3JA t: 020 7403 2889 f: 020 7407 5283 e: london@architype.co.uk www.architype.co.uk			
Project	CCFL - CHALCOT SCHOOL		
Client	CAMDEN COUNCIL		
Dwg Title	PROPOSED NEW BUILD ELEVATIONS		
Dwg No.	CH-PL652	Revision	P1
Scales	1:50 @ A1	Date	NOV 2012
Drawn by	CM	Checked by	CH