

TENDER ISSUE

REVISIONS

Rev A 04-10-12
-Basement Layout amended

Rev B 07-11-12
-Courtyard added

Rev C 12.12.10
DRAINAGE TO FRONT PATIO ADDED

NOTES

PLEASE NOTE THAT THE INLETS LAYOUT IS INDICATIVE. THE WATERPROOFING SUBCONTRACTOR TO BE RESPONSILBE FOR THE LAYOUT.

18 Ferncroft Avenue
London, NW3

PROPOSED EXTENSION,
BASEMENT FLOOR
DRAINAGE PLAN

DWG No: 18FA/D101C

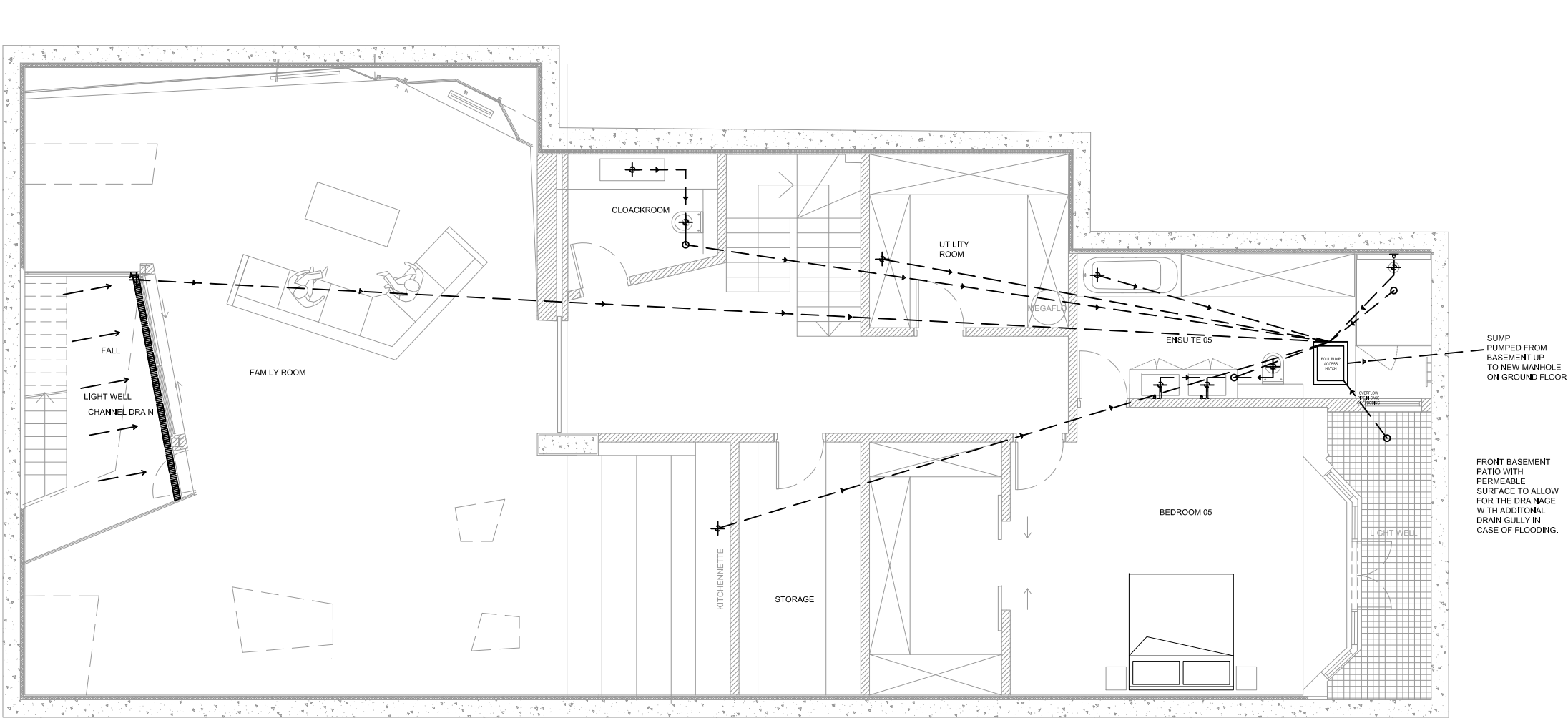
SCALE: 1 - 100 @A3

DATE: FEBRUARY 2011

belsize
architects

48 PARKHILL ROAD, LONDON NW3 2YP
TEL 020 7482 4420 - FAX 020 7482 4186
MAIL@BELSIZEARCHITECTS.COM

© COPYRIGHT
NOT TO BE REPRODUCED OR USED
WITHOUT PERMISSION



ABOVE GROUND DRAINAGE:

FITTINGS	PIPE SIZE	SEAL DEPTH	SLOPE
SHOWER	50mm	50mm	18 to 90 mm/m
W.H.B.	50mm	75mm	18 to 45 mm/m
SINK	50mm	75mm	18 to 90 mm/m
WC	100mm	50mm	MINIMUM 9 mm/m