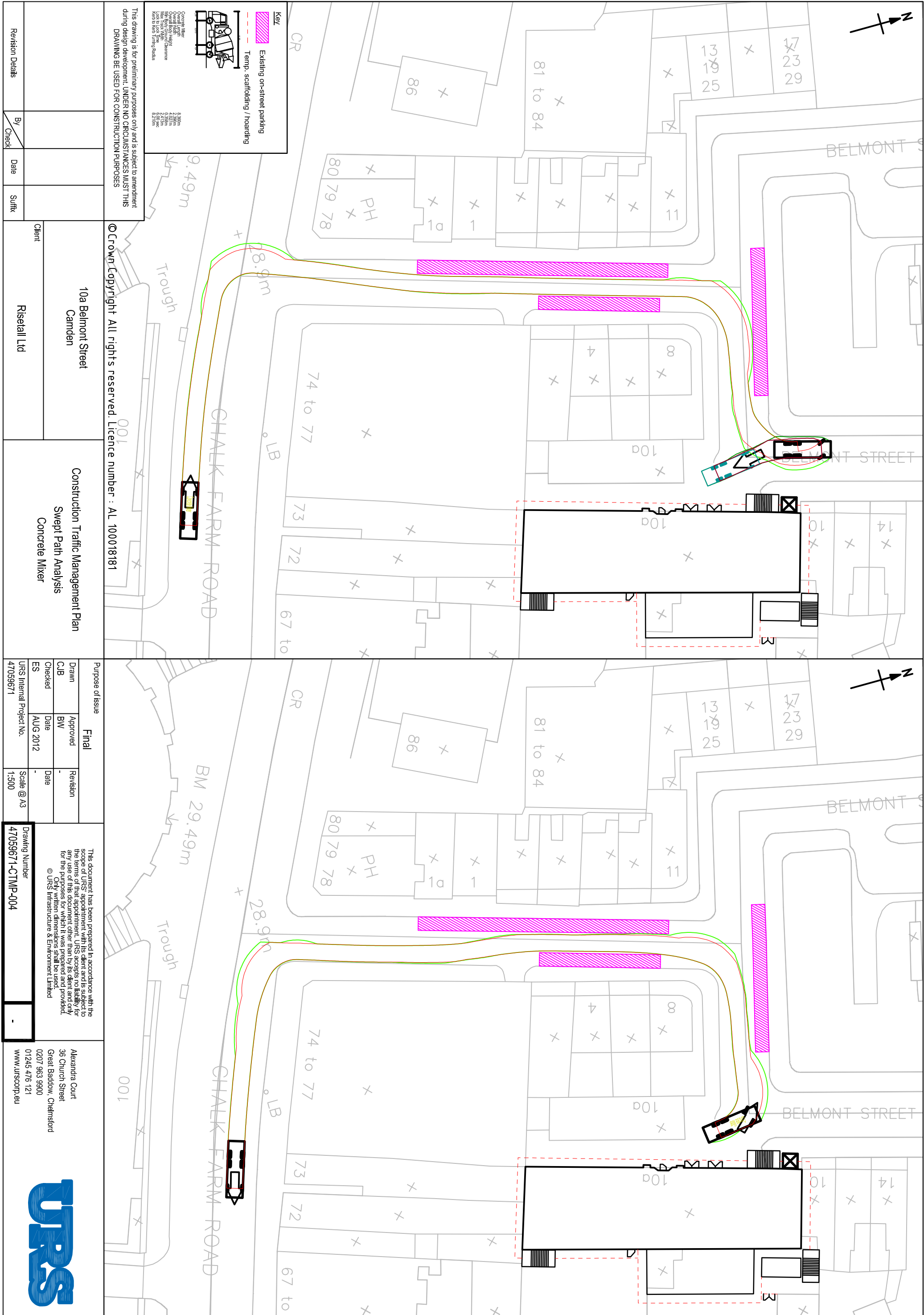
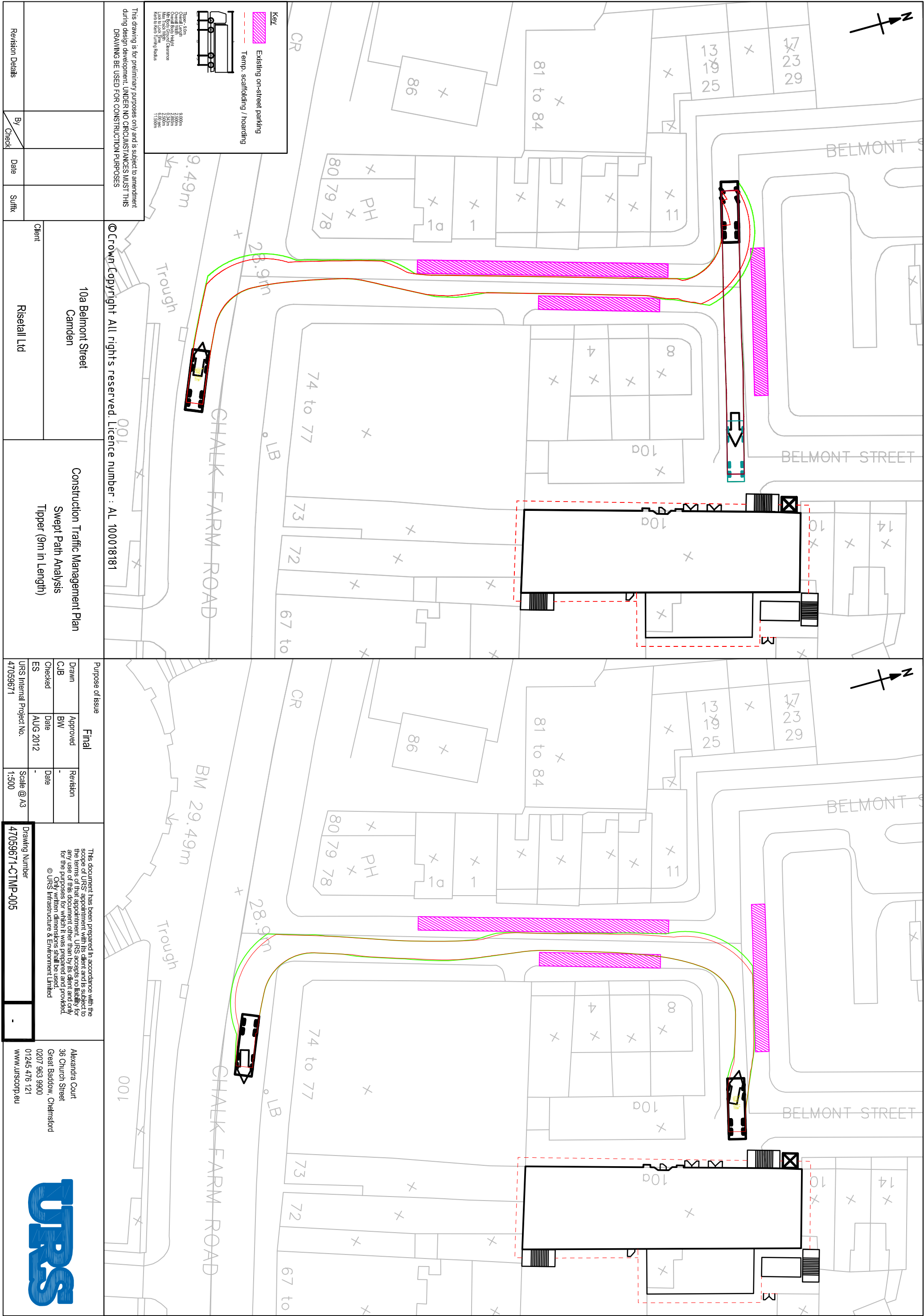
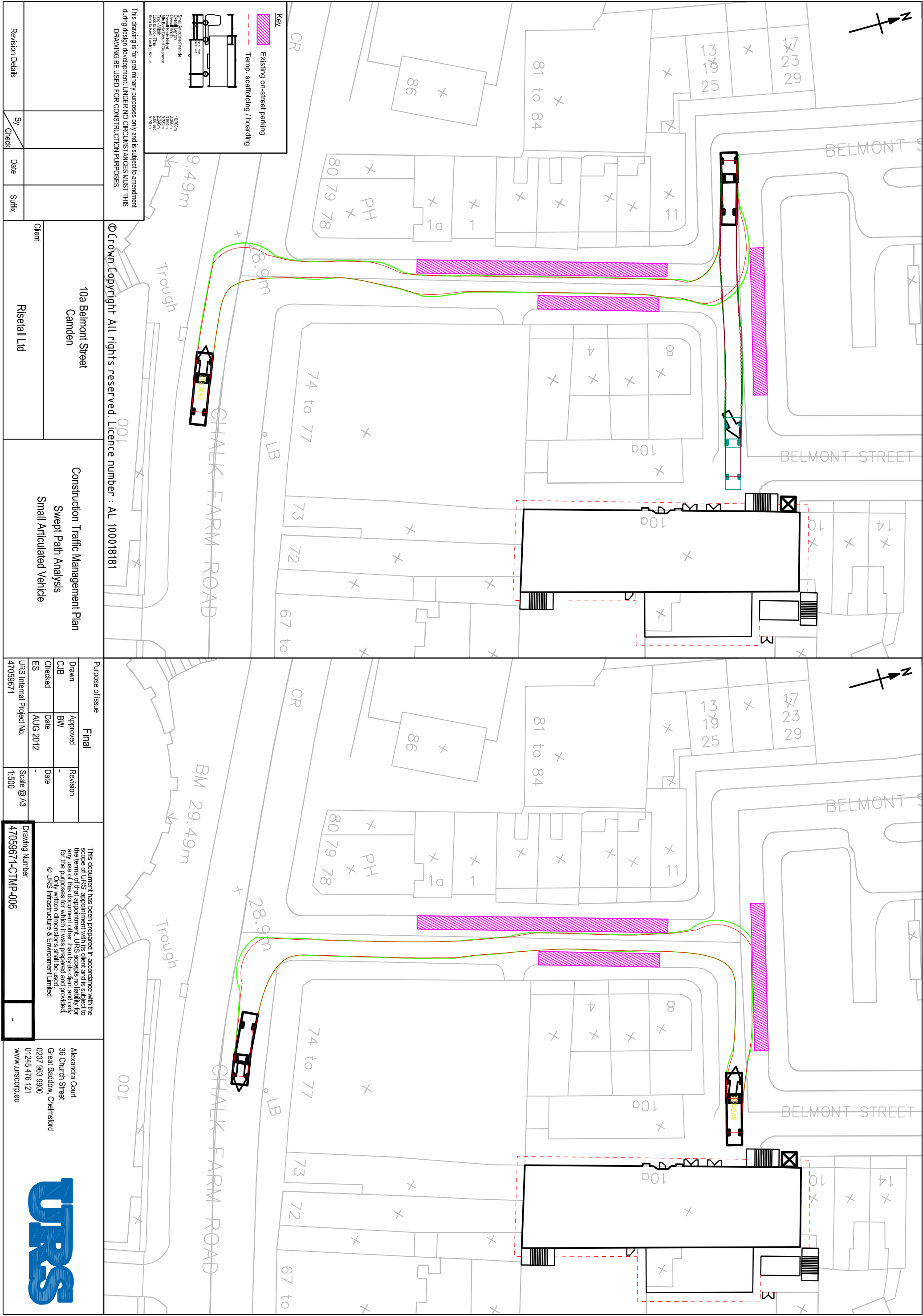




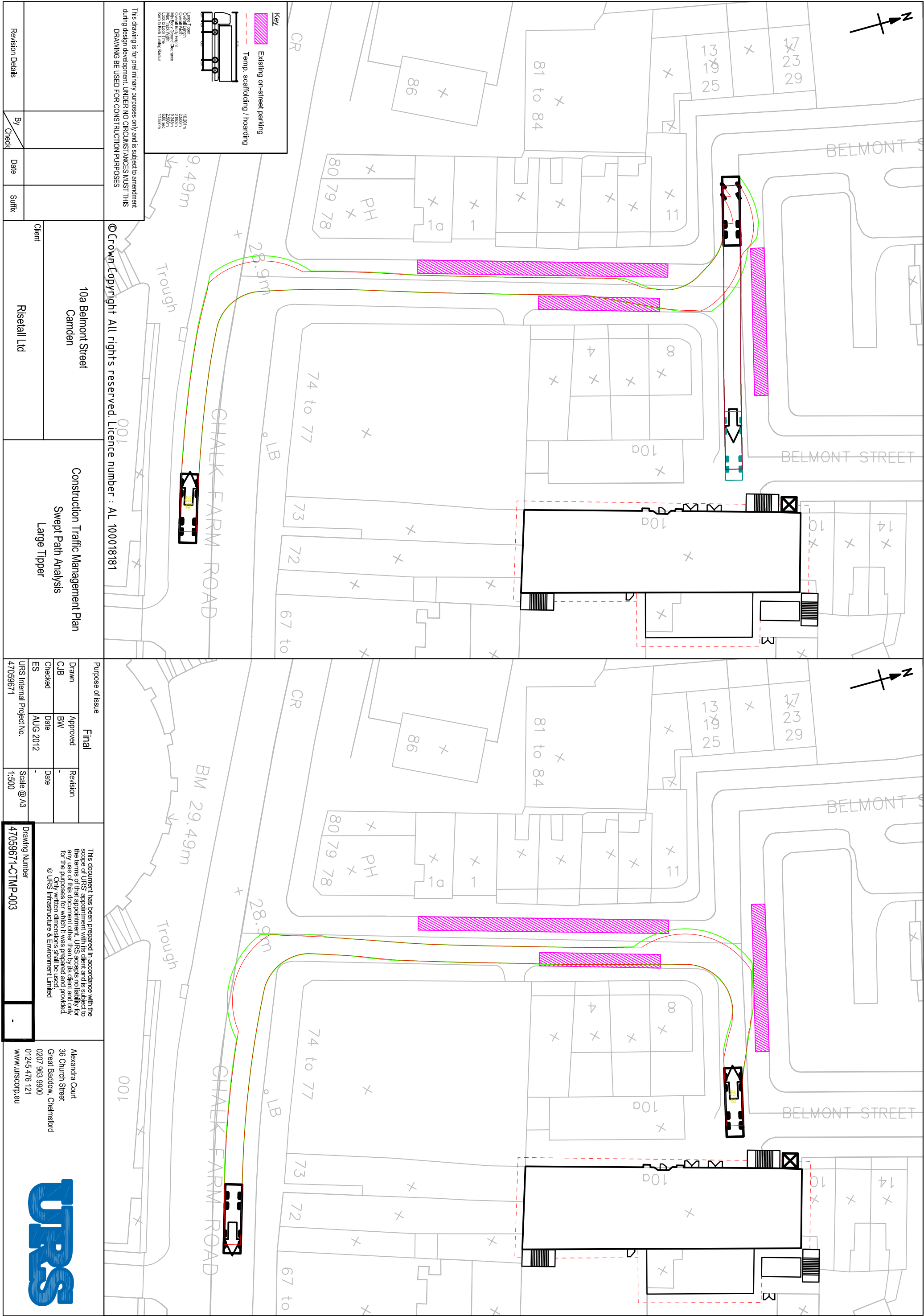
## APPENDIX C SITE TRACKING DRAWINGS

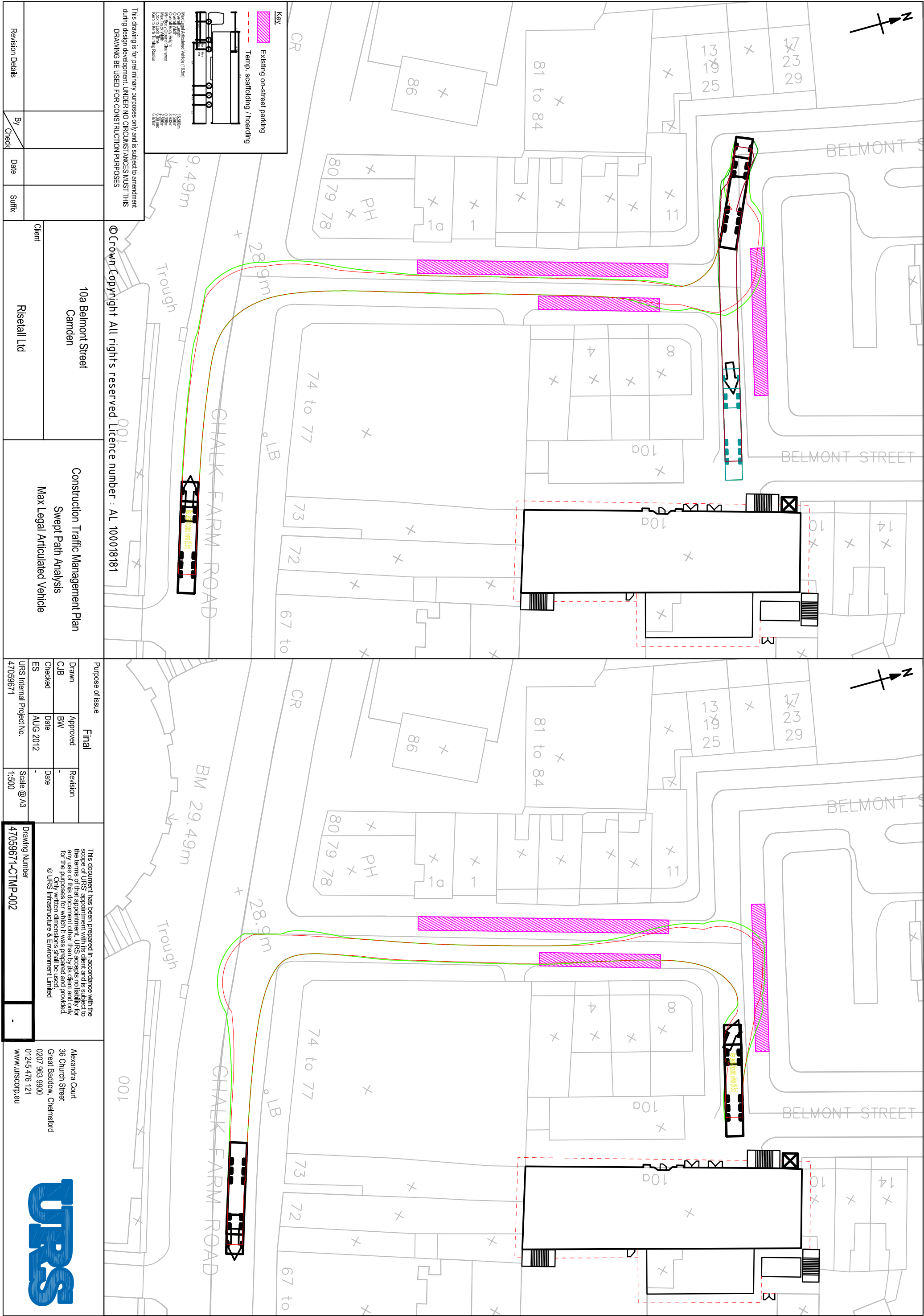


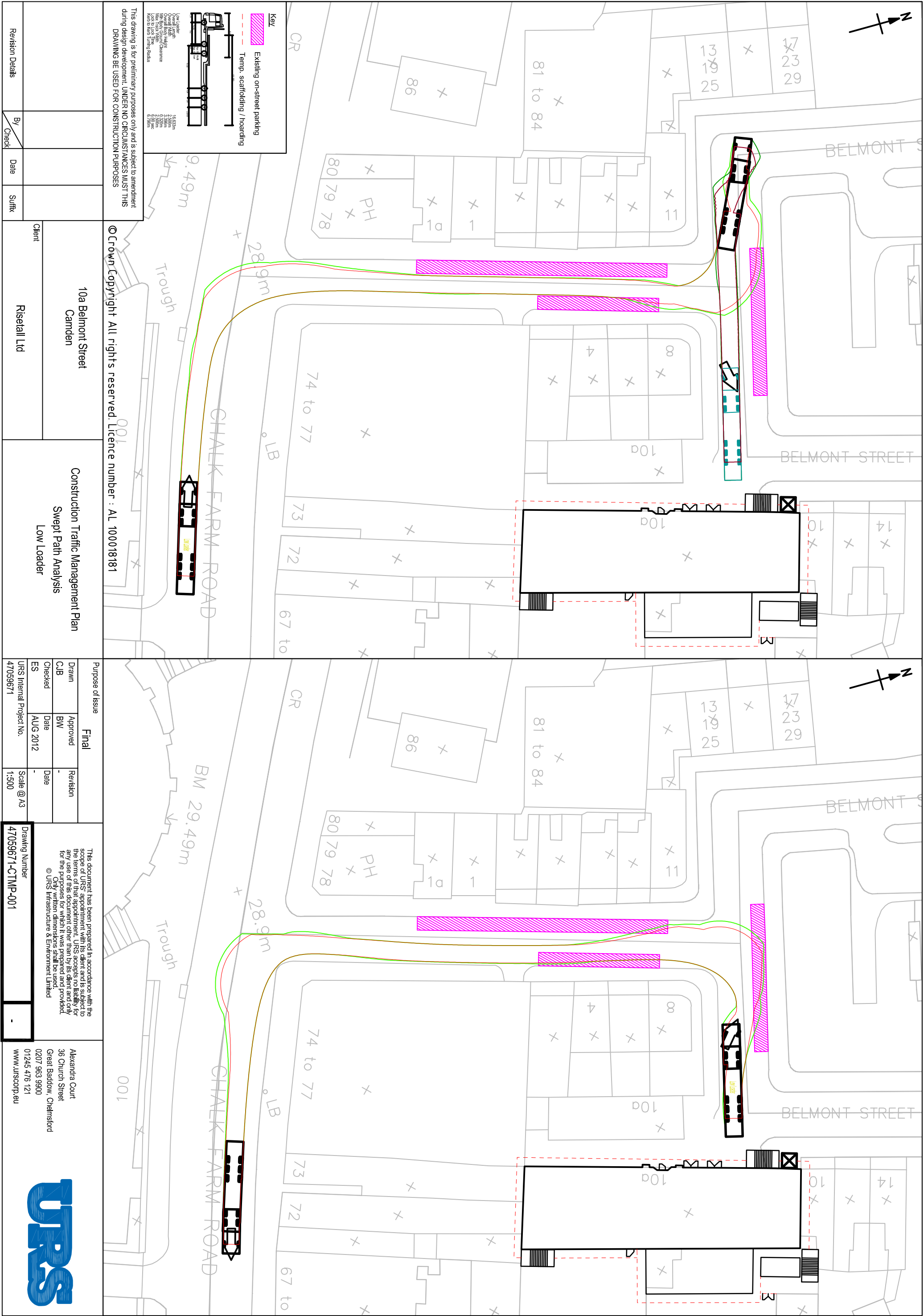












## **APPENDIX D CONSTRUCTION TRAVEL PLAN LEAFLET**



<b>Project</b>	Belmont Street, Camden, London	<b>Reference</b>	47059671
<b>Subject</b>	Construction Workforce Travel Leaflet		
<b>Created by</b>	K Pettingill	<b>Date</b>	01/08/12
<b>Approved by</b>	B Woodland	<b>Date</b>	01/08/12

## 1. Walking

The site is located in the centre of Camden and is therefore easily accessible on foot. The site is located approximately 100m from Chalk Farm Road and 700m from Camden Town (equates to walking times of less than two minutes and less than 9 minutes respectively, assuming a walking speed of 80m a minute). To plan your walking routes to the site visit [www.walkit.com/London](http://www.walkit.com/London).

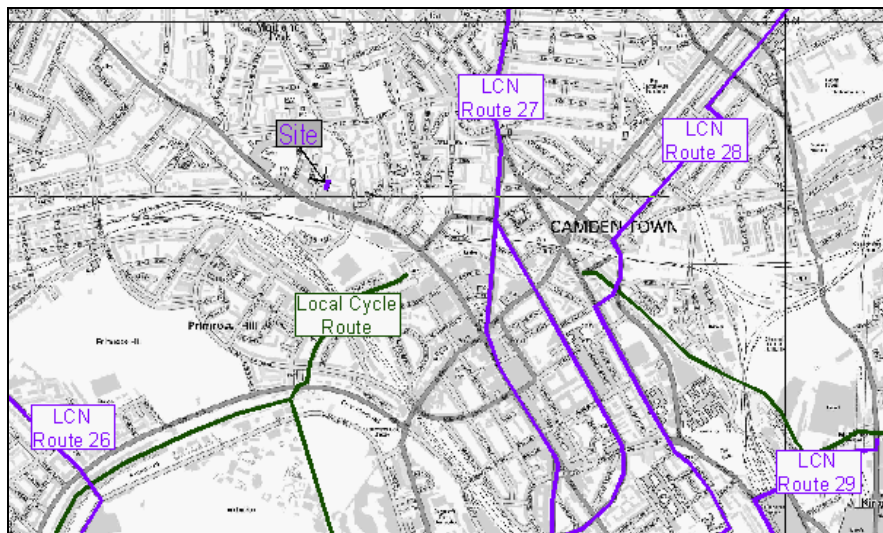
## 2. Cycling



If you wish to travel by bicycle you can securely lock your bike at the cycle parking area located to the front of the building (on Belmont Street).

Several of the TfL Barclays Cycle Hire docking stations are located within walking distance of the site. The closest docking station to the site is located on Castlehaven Road, approximately 600m walking distance from Belmont Street. Docking stations are located across London and therefore staff can cycle from the majority of central London rail and underground stations to Camden. The map provided overleaf illustrates the locations of the Barclays Cycle Hire docking stations within Camden.

The London Cycle Network (LCN) runs within approximately 700m to the east of the site. LCN Route 27 runs along Kentish Town Road (A502) in a north-south direction; to the north it connects with Kentish Town Station and Highgate. Travelling south it connects Camden and central London. LCN Route 26 runs approximately 1.8km to the west of the site and runs northwards towards Hampstead and Golders Green. LCN Route 26 joins LCN Route 222 to the south which runs towards Marylebone. To plan your cycling route visit [www.sustrans.org.uk](http://www.sustrans.org.uk) or [www.londoncyclenetwork.org.uk](http://www.londoncyclenetwork.org.uk).



Contains Ordnance Survey data © Crown copyright and database right 2012

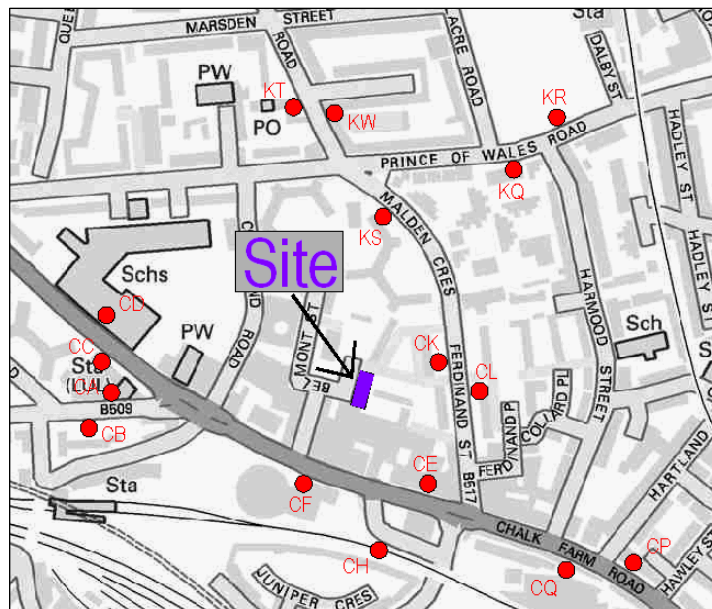
## 3. Bus



The Belmont Street development site is served by a number of bus services on Chalk Farm Road. Bus stop CF is the closest northbound bus stop to the development, located approximately 100m from the development site. Bus stop CE is the closest southbound bus stop to the development, approximately 200m from the development located on the same side of the highway. Bus stops CL and CK are located on Ferdinand Street and are approximately 100m from the site. These bus stops are served by northbound services towards Hampstead Heath and southbound services towards Pimlico. The following bus routes serve these bus stops:

- Bus route 24 runs over 24 hours and serves Pimlico and Hampstead Heath and runs every 4-8 minutes during the peak hours.
- Bus route 27 runs over 24 hours and links Chalk Farm to Turnham Green and runs every 7-10 minutes.
- Bus route 31 serves Camden Town and White City and runs approximately every 4-8 minutes.
- Bus route 168 serves Central London and Hampstead Heath and runs every 5-8 minutes.
- Bus route 393 serves Clapton and runs every 10-12 minutes.

The map provided below shows the location of the bus stops close to the site.



Contains Ordnance Survey data © Crown copyright and database right 2012

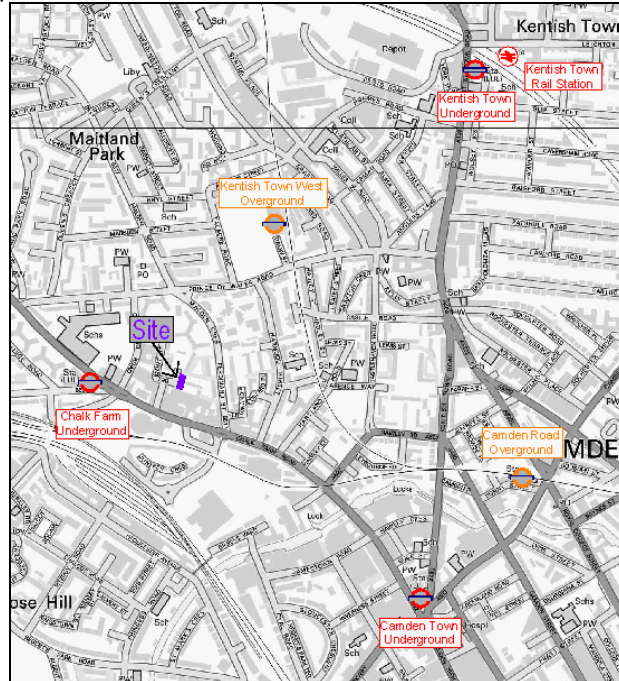
## 4. Rail

### 4.1 Underground



Chalk Farm underground station is situated approximately 100m to the west of the site and is served by the Edgware branch of the Northern Line. Frequent services (approximately every four minutes) are provided towards Edgware, High Barnet (requiring a change at Camden Town) and Euston. Approximate journey times to Edgware, High Barnet and Euston are 26 minutes, 38 minutes and seven minutes respectively. The map overleaf shows the location of the

closest underground stations to the site. Visit [www.tfl.gov.uk/traveltools](http://www.tfl.gov.uk/traveltools) to plan your journey by underground. The map below shows the locations of the stations surrounding the site.



Contains Ordnance Survey data © Crown copyright and database right 2012

## 4.2 Overground

Kentish Town West overground station is situated approximately 600m to the northeast of the site. This is equivalent to an average walk time of 7-8 minutes based on an average walking speed of 80m a minute. Kentish Town West railway station provides frequent services (approximately every 10-20 minutes) towards Richmond and Stratford. Approximate journey times to Richmond and Stratford are 34-40 minutes and 22-27 minutes respectively.

Kentish Town railway station is situated approximately 1.3km to the northeast of the site which is equivalent to an average walk time of 16-17 minutes. Kentish Town railway station provides services towards Sutton (via Wimbledon), Luton (via St Albans) and Sevenoaks. Services operate approximately every 15 minutes towards Sutton and St Albans and every 30 minutes towards Luton and Sevenoaks. Approximate journey times to Sutton, Luton and Sevenoaks are 50-65 minutes (depending on service), 45-50 minutes and 75-80 minutes respectively. St Pancras international railway station is also accessible using the service towards Sevenoaks. Visit [www.transportdirect.info](http://www.transportdirect.info) to plan your journey. The locations of the stations detailed are shown in the map above.

## 5. Car



The site is located in LBC's Controlled Parking Zones; therefore parking on the surrounding roads is restricted. The only available on-street parking for workers within this area are pay and display spaces. The closest pay and display spaces to the site are on Belmont Street, Ferdinand Street, Chalk Farm Road, Ferdinand Place, Malden Crescent and Crogsland Road. The weekday hours of operation for the pay and display spaces is from 08:30 to 23:00 and the charge is £1.60 per hour. Motorcycle parking is also available on Belmont Street for approximately 13 motorcycles.